

The Chi Phi CHAKETT



Let's talk it over

WE call this the RUSHING ISSUE. It is designed to help Chapters in their rushing program. Each Chapter is provided with 100 extra copies in addition to the regular distribution and is released about Aug. 15 to meet the early openings of such schools as the University of Texas. The 3,000 extra copies distributed during rushing will be read primarily by freshmen and their parents. This is one of the benefits accruing directly to Chapters as a result of generous alumni contributions through the Alumni Dues program.

We have included a calendar of rushing periods on the back cover, along with a form for recommending rushees. A glance at the calendar will indicate there is still time to send names of prospects to many Chapters. Many Alumni will be surprised to learn that rushing no longer takes place prior to school opening or in the first few weeks of the new term. At Indiana University and the University of Texas, freshmen can be rushed prior to the opening of school. At the University of Michigan, mid-October starts the rush. On the other hand some schools defer rushing until the freshman mid-semester grades are issued. The University of Connecticut and Pennsylvania State University fall in this category. Rushing does not take place until the spring semester at Amherst and Lehigh.

I am happy to report the old system of "Hell Week" is a thing of the past among our Chapters. Physical and mental hazing is no longer a part of pre-initiation activities. Hell Week, which in the past culminated the pledge period, has now taken the form of a work week. Hours formerly wasted in foolishness are now used in house and ground improvements and maintenance. Pledge time is frequently donated to worthwhile campus or community projects. Study is being emphasized

through the pledge training period and the pledge trainer usually endeavors to schedule the pledge time so that the program in no way interferes with school work.

A prospective fraternity member is obviously interested in the cost of fraternity membership. It is my observation that typically the average fraternity man pays less rent than the independent, and typically the Chapter provides a better balanced diet and more food at a lower cost than either private or institutional eating facilities. The area of cost that fringes on the "luxury" comes in the form of dues and initiation fees. The dues usually vary widely depending upon the nature of the social program, but most fraternity men agree their social "costs" are less than that of an independent maintaining a comparable social calendar. The three major items in a student's budget are tuition, room, and board. Fraternities are helping many men hold the latter two items to a minimum.

Joe Boyd, Dean of Men at Northwestern University, has written a very thought-provoking article for this issue. One that all men considering fraternity membership should read. Dean Boyd's editorial is the first of a series to appear in the CHAKETT. Future issues will feature timely editorials and articles by Deans and other College and University administrative officials, where Chi Phi has chapters. Beginning with the December issue of CHAKETT we will also run a series of feature articles on our Chapter Advisers. We feel this is little enough recognition, as a reward for an unselfish and many times thankless job. We hope you will like these new features.

The Fraternity is indebted to Dr. Hunter for the establishment of the colony at the University of Oregon. It is a dream come true for him. He

has resided in Eugene, the home of the University, for approximately 25 years and, of course, was Chancellor of the Oregon State Board of Higher Education. We hope the colony will prosper and always be a living tribute to a great educator.

In speaking of Oregon, an interesting illustration of "Casting thy bread upon the water" comes to mind. The Chi Phi Educational Trust recently granted Ennis Wuite, Epsilon Delta '62 (Oregon State), a \$1,000 scholarship, and two days after making this grant, a check for slightly over \$450.00 in interest arrived from the Oregon State Chi Phi Alumni Assn., the Educational Trust having purchased \$10,000 of their bonds in 1959.

The list of delegates to the 1960 Congress truly illustrates the national scope of the Fraternity. The M.I.T. chapter is represented by Dennis Cook of Fairbanks, Alaska; Lafayette by Jim Hartsel, Ft. Lauderdale, Fla.; Alabama goes north for a delegate and sends James Monroe of Windsor, Conn.; Dartmouth sends a home town man—Ben Read of Atlanta and provides a long ride for Pete McCrea of San Francisco. We normally think of the University of North Carolina as a state school and yet it sends Warren Jackson of Chattanooga, Tenn., and J. R. Brown of Hamilton, Ohio. This geographic criss-cross is one of the distinguishing features of one of our Congresses. It provides the delegates with an opportunity to mix with Brothers from every section of the country and share and exchange opinions and ideas.

Respectfully submitted,



National Director

Let's talk it over

THE CHI PHI FRATERNITY

OFFICE OF THE
COUNCIL



308 MARK BLDG., ATLANTA 3, GEORGIA

JOHN E. OLIVER, *Grand Alpha*

A Few Words

Dear Brothers:

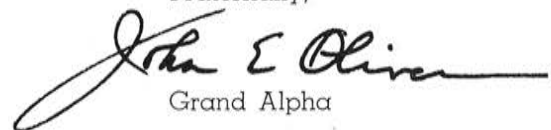
Let's stop and consider why a young man entering college should join a fraternity.

Men have always desired to select their friends and companions and those with whom they would like to associate. Joining a fraternity offers you this opportunity. In a fraternal organization such as CHI PHI you will find each person has a responsibility to the other, almost a family way of life. It is true that one has to experience this in order to get the full sense of its value and the great enjoyment and meaning of BROTHERHOOD. The fraternity is like a baseball or football team. Each member gets a great deal of satisfaction out of individual accomplishment as well as contributing to the overall team effort. In a fraternity each man has the same opportunity. These opportunities are not always available to the non-fraternity man.

Most young men away from home and family for the first time feel the need for a second home. Our CHI PHI homes provide good and clean housing, a little better food than is obtainable elsewhere, and the warmth of close friends.

There are many intangible values to fraternity membership . . . the opportunity for spiritual and cultural growth, social contacts and activities . . . all of which make for a better life and more pleasant college days. The mind cannot be wholly receptive to learning unless the environment is favorable. Fraternities can, and do, provide the right environment. These are but a few of the reasons why a young man with four college years before him should join a fraternity.

Fraternally,


Grand Alpha

Why I Believe in Fraternities

There is no better way to train in human relations, to learn to live with one's fellow man than to spend four years in a chapter house in America.

by Rev. Fred E. Luchs

Minister, Congregational Church, Ann Arbor, Michigan

REMEMBER that awful day when Robinson Crusoe looked down in the sands and there saw a human footprint.*

Thereafter his life was changed. Now he had to live with that person. No longer could he come and go as he wished. Now he must plan his meals, his bedtimes, his work, his leisure with the other person in mind. Robinson Crusoe had to learn the lesson we all must learn: how to live with people.

A psychologist said to me recently that almost half the people who lose their jobs lose them not because of inefficiency, not because they lack the techniques, not because they cannot do the job but because they cannot live with people. *Coronet Magazine* had an article some months ago on "how to succeed." The editors went to 202 successful men and asked them what were the reasons for their success. We read in the article that the 202 men were unanimous. They said "The single ability most essential to success is the ability to get along with people."

I know a history professor who is an expert. He has become nationally famous, but he is insecure in his position because of his belligerent attitude towards his colleagues. A few years ago a brilliant young scientist in one of the Ohio colleges was forced to resign. He couldn't live with the men

in his department. A newspaper man in an Ohio town a few years ago lost his position because he could not work with the men on his staff.

Why did Andrew Carnegie pay Schwab a million dollars a year or more than three thousand dollars a day. Why? Because Schwab was a genius? No. Because he knew more about the manufacture of steel than other people? Nonsense. Charles Schwab testified that he had many men working for him who knew more about the manufacture of steel than he did. Schwab says that he was paid this salary largely because of his ability to deal with people.

The problem of human relationships has been intensified greatly by our moving from an established society to an adaptive society. In that old established society men found security within the family or the social group. It is more difficult to adjust ourselves to our fellowmen today than it was in the days of our forefathers because the old cultural patterns which gave us security have broken down. Our great industrial civilization has diminished our capacity for working together.

We have been minimizing the problem. Have we not said, "Get people together around the same table, in the same conference, on the same committees, and they will learn to live together?" But in these "together" relationships we have our greatest problems.

It's not the peasant in Russia, or the coolie in China, or the farmer in France, or the landholder in England who disturbs my human relationships. It's my roommate, the man at the next

desk, the person to whom I am married, the foreman of the shop, and the worker at the nearest machine. The closer a human lives to me the more he becomes a problem.

College ought to prepare a student to live with people. But a boy can leave his alma mater fully versed in the ancient philosophies, well qualified to do research in three languages, practically trained to teach a room of children, ably trained to think through to a logical conclusion, but yet be a neophyte in human relationships.

The fraternity man need not fail here. Four years of living with his fellowmen, four years of meals, beds, bull sessions, meetings, dances, projects, parties ought to fit a man to live with people. Fraternity men live together not as robots but as brothers. They have knelt at the same altar and in fraternity ritual paid obeisance to the same God. Each man is "brothered" to the other with holy ties. He who would fall is lifted up by his brethren. The faint-hearted are encouraged to assert themselves; the bully is tempered with loving and firm hands; the showoff is taught humility; the wallflower is lured into the arena; the hot-tempered is cooled with charity; the bigot is enveloped in brotherhood. THAT'S WHY I BELIEVE IN FRATERNITIES.

Washington Officers

THE Chi Phi Club of Washington, D. C., has a new slate of officers: president, Lee Bean, Epsilon '40; vice president, Jack Somers, Alpha-Alpha '26; vice president, Arno Jewett, Gamma Delta '32; secretary-treasurer, Anthony Morris, Alpha-Alpha '59. If you are in Washington, call Brother Dean or Brother Morris for information.

*In giving permission to reprint the editorial written for the Alumni Interfraternity Council at the University of Michigan, Reverend Luchs wrote:

"Because I have a deep respect for your fraternity, since it was a great rival of ours on the Franklin and Marshall Campus, I am happy to give you permission to reproduce my editorial. I enjoy your boys on campus. They are a great group."

The Chi Phi CHAKETT

SEPTEMBER, 1960

Contents

Let's talk it over.....	Cover 2
A Few Words.....	1
Why I Believe in Fraternities	2
I am Vallamont	4
Grand Beta Ordained	4
Brotherhood: Realization of a Small Chapter.....	5
Fraternity Membership: Why and Why Not?.....	6
Kappa Signs Training Creed.....	7
88 Years of Tradition at Lehigh.....	8
Florida Chi Phis Emphasize Service.....	9
Thomas Directs USC Alumni.....	11
Cincinnati Club Seeks Projects.....	11
Chi Phi Colonizes at the University of Oregon.....	12
Educational Trust Supplies Study Guide.....	15
Keep in Mind.....	15
Inter-Chapter Games Increase Fellowship.....	16
An Interested Rushee Makes a Valuable Member.....	17
Additional Chapter News	18-23
Officers and Roll	24

Volume 45

Number 1



R. Dillon Smith, Alpha, and Joel Russell, rush chairman of Pi Chapter at Northwestern University, are looking over a copy of "Chakett" while waiting for rushees to come up the walk to the new chapter house

Cover

The "Quad" at the University of Oregon is seen here from the library. To the north, in the background, is the school of business. This scene of serenity is rare. Hurrying students crowd it between classes

CARL J. GLADFELTER
Editor

L. Z. ROSSER
Managing Editor

The Chi Phi Chakett is published in September, December, February, and April at The Fraternity Press, 2642 University Avenue, Saint Paul 14, Minnesota. Editorial Offices are at 308 Mark Building, Atlanta 3, Georgia. Second class postage paid at St. Paul, Minnesota. Subscription rate, \$5.00 per year. Single copies \$1.50.



Rho Chapter members at Lafayette College have lived in this house for 50 years. Kept in splendid condition, traditions are strong within its walls

I AM VALLAMONT

by John Dillon, Rho '63
in Rho News

I AM VALLAMONT, now 50 years old and, from the outside anyway, hardly changed. I am filled with youth, sometimes serious, sometimes gay. Most of the Brothers that I had known last year returned this year. A few, the seniors, did not. I was cleaned, painted, trimmed, and put in fine shape for the coming school year and also for the incoming freshmen. For two weeks, I was filled with people—many of them I knew, some I didn't, some were shy, but mostly everyone was happy. I made a good impression on the freshmen during fall rushing and added 20 members to my family.

When rushing was over, the football season began. Everyone talked about sports. There were a few cocktail parties. Then Parent's Weekend came along, and I had to be on perfect behavior. The parents gave me a careful going over and, as I knew they would be, they were more than satisfied. After the football season, the Brothers really began to hit the books and I was not filled with as much excitement anymore. Fall went quickly and soon my doors shut out the cold biting wind and frost of winter.

When we had second semester rushing, I was again filled with excitement and new faces. As a result, three more pledges have joined the Chi Phi family; we are growing all the time. Plans are already being made for changes next year. I will be fixed up even better than before, because I will now have to impress the incoming freshmen, who will be right across the street from me, for a whole year.

I was in my full glory two times this year at Fall and Spring I.F. It was so good to hear all the happy sounds and see all the faces within my walls. The pretty girls will be enough in themselves to keep me going through the lonesome summer with anticipations that they will grace my halls again next year.

The perils and hazards of college life, especially to the first-year men, have had their effects on our family. But most of us survived and will continue to be members of my family for years to come.

I was also disappointed this year. Many of the faces which I felt sure that I would see this year, as I had

TURN TO PAGE 5

Grand Beta Ordained

IN Saturday morning, June 25, at All Saints' Episcopal Church in Minneapolis where he is rector, Robert A. Lesch, Grand Beta, was ordained to the sacred order of priest. Edmond G. Hawley, a clergyman from the Cathedral Church of St. Mark, was also ordained in the same service by the Rt. Rev. Hamilton H. Kellogg. Bob had served on the church school staff at St. Mark's and so the congregation of well-wishers came to do honors to both young men.

The Rev. Canon F. Douglas Henderson, headmaster at Breck School, presented Brother Lesch for the rites. Brother Lesch has worked under Canon Henderson for the three years he has been studying in the lay program. One of his fellow students is the Rev. Richard Grabowski, a priest in the Romanian Orthodox Church. Reverend Grabowski was the litanist at the ordination service, wearing the red clerical robes of his church.

Dean Henry N. Hancock of St. Mark's preached the sermon. The preacher is required to "declare the Duty and Office of such as come to be admitted priests; how necessary that Order is in the Church of Christ, and also, how the People ought to esteem them in their Office." He used the 4th chapter of Corinthians I as his text, reminding the congregation that faithfulness is the first qualification of a steward, be he priest or layman. Every man brings to his work his own peculiar personal qualities. The powers of a congregation (or any other electing body) carry corresponding responsibilities, the Dean stated.

Following ordination and as a part of the rites, the communion service was read with the young priests serving for the first time. Only their families were served. Mr. and Mrs. A. C. Lesch, Bob's parents, were present. Proper planning permitted Artis, his wife, to attend. Sarah Ruth, weight 8 pounds, 7 ounces, arrived on June 17.

BROTHERHOOD:

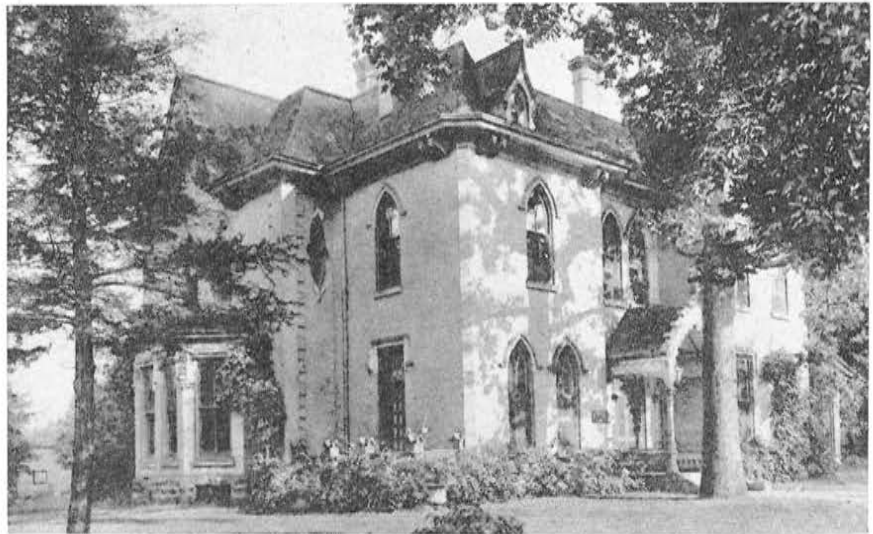
Realization of a Small Chapter

ALPHA-CHI is not one of the larger fraternities on campus, and we are proud of this fact. In fact, we do not want the numbers which some of the other fraternities have because we feel that our size causes us to have a truer feeling of Brotherhood. The reason for this is that in a smaller chapter each individual is important. As Brother Gladfelter said when he was with us last April, "A fraternity is a family," and in a family each individual is important.

When one is a member of a larger chapter, his importance decreases, and what is even worse, the feeling of Brotherhood is lost in such a situation. For example, there is the story that once in a large fraternity house, a Chi Phi and a member of that Fraternity were descending from the second to the first floor. While on the stairs they passed another man who greeted them. Later the Chi Phi asked his companion who the person was they had just passed. Our Brother was surprised to learn that his friend did not even know the name of the man they had met, and yet both of them were Brothers in this fraternity house!

At Alpha-Chi this would not happen because each Brother takes pride in the fact that he knows the towns from which the Brothers come, their family background, their interests, ideas, characteristics, their college major, etc. The Brothers are interested in each other; they are living in a fraternity which is a family, and not just a rooming house.

The Brothers are active in campus activities. The freshmen and the upper classmen have been very active in intramural athletics this year. Two of the Brothers are on the University football team, two are on the track squad,



Ohio Wesleyan members of Alpha-Chi Chapter are proud of this spacious house

and another is on the soccer team. Four of the Brothers are counselors at Freshman Men's Camp, five are in Circle K., and one of the two senior justices on Men's Court is a Chi Phi. Pete Mrdjen is president of the International Students Assn., while Al Alexander is the executive vice president of IFC and is a member of OΔK. There are Brothers in other honorary fraternities as well. Two are in ΦMA—Sinfonia (music), and two are in ΠME (math). There is a Chi Phi in the debate honorary, ΔΣP, and another is vice president of national band honorary, ΚΚΨ, and still three others are members of AEP, the radio honorary. There are Brothers in the A Cappella Choir, the Men's Glee Club, the Concert Band, and the Orchestra. Some of the Brothers are interested in dramatics, and four had leading parts in "South Pacific," this year's senior show. Scholarship is also important at Alpha-Chi as is shown by the fact that several of the Brothers were on the Dean's List last semester.

In social events Alpha-Chi has had three successful formal dances, a formal dinner, dessert parties, and two open houses. At the second open house about one-third of the school attended, and more than 500 had a buffet dinner.

Even with these outside activities, each Brother is proud of the close-knit brotherhood which distinguishes Chi Phi. We have this feeling because each

Brother has a rôle in which to serve the Chapter. It may be as an officer, as a member of one of the standing committees, or as one of the salaried positions in the house. Each Brother is, as the *Pledge Manual* states, "A cog in the chapter . . . and the cog is the most important part of the machine." He is not, as in many large fraternities, an unneeded accessory of the chapter whose only contribution is financial.

Almost all of the active Chapter and Alumni of Alpha-Chi have fond memories of "The Oaks." This is not only because the house is beautiful, but because of the Brotherhood they experienced here. This Brotherhood can best be felt in a small Chapter, and this is the reason that Chi Phis are Brothers "not for four years, but forty."

Vallamont

FROM PAGE 4

seen in years gone by, did not come back to say hello or give me an approving eye. I know they all wish to come back and I also know that they have been busy. But you can't imagine the disappointment I feel when I think that you have neglected me. Your Alumni Dues are appreciated, but your social calls are important also. This way, I can feel sure that the Chi Phi family is still united and will continue to grow, together or apart.

Fraternity Membership: Why, Why Not?

by Joseph D. Boyd, Dean of Men

Northwestern University

THE fact that one joins or does not join a fraternity has in itself no significance. The important question is why the choice is made.

For many, fraternity pledgeship and membership has, in many persons' evaluation, shallow and self-centered reasons for being. Among these less desirable reasons are: to please my parents, to obtain social status, to be able to date the right gals, to have a pin to give a girl to show my affection, to obtain "short cuts" and other often questionable aids in obtaining grades, to have more fun, to improve my status on campus, to be a part of bigger and better social affairs, and do what others are doing.

I challenge the prospective pledge and present member to answer the question: Do the above describe my interest in fraternity life?

For many, fraternity pledgeship and membership have, in many other persons' evaluation, most significant and worthwhile reasons for being. Among these are: to develop the art of being a gentleman, to be challenged with the highest of idealism, to help me become a better man, to develop balanced maturity, to subordinate oneself to the wishes of the group, to learn the value of service, to develop a group consciousness, to know the true meaning of loyalty, to gain experience in business management, to experience democracy in action, to expose myself to a congenial and stimulating atmosphere, and to develop life-long friendships.

I sincerely trust that all pledges and members can truthfully say that the above reasons are the reasons for their

Editor's Note: Joseph D. Boyd received his A.B. degree at DePauw, his M.A. and Ed.D. at Northwestern. He is assistant professor of education in addition to his deanship. A member of Delta Tau Delta, he has been at Northwestern since 1955.



Dean Joseph D. Boyd knows whereof he speaks

interest in and affiliation with a fraternity.

Three other do's and don'ts also contribute to the meaningfulness of fraternity:

1. Don't look for privileges; do seek responsibilities.
2. Don't "warm a bench"; do involve yourself in the life and organization of the Chapter.
3. Don't make Fraternity simply a 4-year experience; do make your membership for life and give life-long allegiance and involvement.

The well known expression, "You get out of something what you put into it," is most apt and descriptive in evaluating the merits of a fraternity experience.

Dues and News

Chapter Advisory Chairman—Zeta Delta Alumni Assn.—DALE C. MARTIN, ZΔ '55.

Son J. F., Jr., pledged Chi Phi at Alpha Delta Chapter—Penn State.—J. FLETCHER BARDSELY, Θ '28.

Am doing graduate work at Florida State University. Will receive M.S. degree in August '60.—JOHN G. YOLMANS, Γ '42.

Plans for Sept. 6-9?

IF you have never attended a Congress—

IF you are going to be in the south immediately following Labor Day—

IF you are vacationing after Labor Day—

IF you want to see your fraternity at work and play—

IT'S NOT TOO LATE to write or wire the Atlanta Biltmore Hotel, Atlanta, Ga., for reservations. Or if you will communicate with the Chi Phi National Office, 308 Mark Bldg., Atlanta 3, Ga. Tel.: Ja. 2-7521, we will be glad to obtain them for you.

The Atlanta Chi Phi Alumni Congress Committee have planned the following social events for your pleasure:

TUESDAY, 8:30 P.M.—
Stag Smoker

WEDNESDAY—Noon—
Luncheon

6:00 P.M.—Yacht Club
Outing at Lake Lanier

THURSDAY—evening—
Dinner dance at Piedmont Driving Club

Y'ALL COME!

BOOKS by Chi Phis

THE Council would appreciate receiving copies, preferably autographed, of books authored by Chi Phis. The acquisitions will be placed in the Library of the Archives. As a regular feature we will run announcements of new books by Chi Phis, and when space permits, a brief review.

Rock to Riches. By Charles H. Dunning, Omicron '09, with Edward H. Peplow, Jr. Southwest Pub. Co., Inc., Phoenix, Ariz. \$8.75.

"To all my Chi Phi Brothers in that Fraternity of splendid men who have created human riches." Charles H. Dunning inscribed the copy of his book sent to the Office in this way. Brother Dunning is a mining engineer who held his first job out of Yale in the wilderness of northern Canada. An expert canoeist, he was in demand as a fishing companion as well as an engineer. Black flies and mosquitoes drove him south. He has spent the past 50 years in Arizona. For seven years he served as director of the Arizona Department of Mineral Resources. His book is an historical analysis of the problems met and solved in turning Arizona mineral deposits into the largest resource of non-ferrous metallic metals.

For Forty Years, Not Four

P.O. Box 85, San Benito, Texas

DEAR BROTHER GLADFELTER:

Several weeks ago Brother Merritt Tyron Lawrence, Nu '19, called at the office of the International Boundary and Water Commission in Harlingen, Texas, to see me. It was the first time I had seen Brother Lawrence since I came to the Lower Rio Grande Valley in the early part of December, 1918. We had a good time discussing some of the Nu Brothers, many of whom are still living.

Brother Lawrence graduated in electrical engineering in June, 1919, and went with General Electric where he remained for 40 years, retiring last year. He is presently doing some consulting work for Commonwealth Associates, Inc. He lives at 11971 Lake Shore Ave., Grand Haven, Mich.

For the first several years after I came to the Valley, I was engaged in irrigation and drainage engineering and since June, 1933, have been with the Commission on the Lower Rio Grande Flood Control Project.

Yours in the bonds,

WOODSON FEARING HEATH, Nu '17



Woodson Fearing Heath, Nu '17, left, and Merritt Tyron Lawrence, Nu '19, met again after 42 years

Peabody Award

E. W. ZIEBARTH, Gamma Delta '40, dean of Summer Sessions, was in New York April 20 to share a Peabody broadcasting award presented to WCCO radio. He is to be cited for "outstanding contributions to international understanding."

As news analyst and former CBS foreign correspondent, he already holds the Peabody award, six awards for news analysis, and three for contributions to education and public service in radio and television.

Ziebarth is former educational director of the CBS Central Division, and recently participated in educational network hearings sponsored by the Department of Health, Education and Welfare. In addition to regional news analysis programs, he does a weekly commentary for the Voice of America.—*Minnesota Daily*.



Winter in Madison provided the scenery for Kappa's house at the University of Wisconsin

Kappa Signs Training Creed

by John S. Clarke

BY signing the active Training Creed, and adhering to it, Kappa Chapter has again set the pace for fraternities at Wisconsin. In the days of old, it was storied that the Chi Phi initiation week was the toughest on campus. Those that experienced it agreed. But the times are changing, and though many who went through the old week

would like to dish it out to the new pledges, we have to realize the growing antagonism of university administrations and the public as a whole to old fraternity practices. Therefore the active Training Creed was formed. It was designed to do two things. One, the Fraternity must provide a well balanced program of social, cultural, and organizational activities, along with the all-important scholastic emphasis; two, the Fraternity shall not use any methods of physical or mental harassment that might be unsanitary, dangerous, or degrading to the pledge.

So far, the last two initiations under this program have not only been successful, but a lot of work has been accomplished. Last time, the dining room and hall were repainted, the woodwork restained, and numerous smaller but vital chores tended. The system seems to be working; in a few years it will probably be the rule, not the exception.

Fortunately, we pledged some 20 men last semester, and about 10 this semester. They have diversified interests, all the way from football quarterback to varsity debater, near-four pointers to those socially inclined. But we also watched the studies, enough so to place 7th out of 33 social and

\$5 and News

Am practicing dentistry here in Hendersonville, N. C., in the Oakley Medical Bldg.—FRANCIS A. BUCHANAN, A-A '52.

Presently assigned to the only Day Fighter Interceptor Squadron assigned for operational duty to a foreign government. Present assignment is Royal Netherlands Air Force Station, Svesterberg, about 25 miles from Amsterdam, Netherlands.—JOHN W. JONES, A-A '52.

On June 25 will report to Ft. Huachuca, Ariz. (2d Lt. U.S.A. Signal Corps).—J. STEVEN RUTLEDGE, X '59.

I will be attending the Medical College of Georgia for the next four years. Please change my address from Rome to Augusta, Ga.—ROBERT HENRY SHEAR, I '59.

With Pioneer Title Insurance & Trust Co. for 43 years. Still a director.—CARY K. COOPER, AOX '01.

I am still active in the advertising business in New York, but getting to the age where I expect to take it easier. Glad to hear the Fraternity is active in expansion.—SYLVESTER M. MOREY, X '18.

professional fraternities for the first semester's rush. We paid attention to the activities, with three IFC chairmen, the chairman and vice chairman of Badger Political party, the vice president of the Dorm Assn., the president of Hooper's Skiing, Sailing Club, and two student senators. We had football, basketball, crew, and rifle team members.

Being the Kappa Chapter, we had some great parties. The notable ones were probably Cherokee Chug-a-lug, the Winter Formal, a Hobo Party with the Sigs, a Hawaiian Party with the Chi Psis, the 14th annual Esquire Party, Bourbon Street party, and the Spring Formal. There were the post-football parties and the inevitable suppers with sororities.



We were in the finals of Humorology, with the Kappas this time, for the 10th straight year (since its founding). Our Yogi Bear Homecoming decoration caused a great deal of comment on the campus, though for the first time in a number of years it didn't manage to win the prize.

For those who know the house, the bathrooms have been renovated by the Alumni, with new fixtures. The Mothers' Assn., of which we're quite proud, redecorated the dining room with a mural.

In the fall, the IFC inaugurated a new rush policy, whereby rushees must go to one chapter house in each of six districts. We hope the new system benefits all, as it will give some of the smaller fraternities a better chance.



Lehigh Brothers gather for a snack in the kitchen of the chapter house

88 Years of Tradition at Lehigh

by Gilbert J. Milan

CHI PHI was the first fraternity established at Lehigh, being chartered on Feb. 15, 1872. We are now in our 88th year of continuous existence and have never been on scholastic or social probation. The present Brotherhood has an intense desire to live up to the records established by the men who have preceded us and to maintain the traditions of the Chapter.

In order to accomplish these goals, it is necessary to pledge men of sound character, who are good students, socially acceptable, and interested in helping the Fraternity. In our pledging program, we seek to help the new men achieve overall personal development and to instill in them a sense of unity and Brotherhood. Above all, we seek

to cultivate consideration for and interest in others.

The Chapter believes that a proper atmosphere is a definite aid in realizing its goals. We are especially proud of our physical plant and are continually striving to keep it in excellent condition. For example, we have recently completed the refinishing of the floors in the foyer and the living room, reconditioning the lawn, and the conversion of a basement room into a fine party room. House improvement is largely possible because of the relationship that Psi has with its Alumni. The chapter alumni association, called the Briarfield Association, owns and maintains the house, and is actively represented by an executive committee. The

association has three scheduled meetings during the year with the chapter officers, and is consulted whenever a chapter house problem arises.

Along with pleasant living conditions go sensible study conditions. Quiet study hours are maintained during weekday evenings. A special study hall is kept for pledges having scholastic difficulty. Truly good scholarship is one of our goals.

Another factor which helps to make life healthful and enjoyable at Chi Phi is the tasty and well-balanced meals that are prepared by our capable cook. In order to help satisfy the extremely large appetites of young men, the kitchen is kept open for the use of the members.

Concerning the costs to members, Psi Chapter is proud to state that its house bill is one of the lowest for any Lehigh living group. Not only are the costs reasonable, but also financial aid is offered to those Chi Phis in need. The waiters, the steward, and the treasurer are paid for their services. The P. E. Magnuson Scholarship is awarded annually to a Brother. It is based on need, scholarship, and character.

The social life of the Chapter definitely aids in the development of the well-balanced man. In addition to regular parties, Psi has various special annual events. One of these is the Christmas party, at which time the men exchange small gifts. Each gift is accompanied by a "poem," "composed" especially for the recipient. These "poems" are read aloud for the enjoyment of the Brothers. In the spring there is the Senior Banquet, preceded by a senior-sponsored get-together. After dinner a mug is presented by the Senior Class to the incoming pledges, and awards are presented to the outstanding senior and the outstanding senior athlete. The athletic award is presented as a memorial to Fred Krehbiel, a good student as a Chi Phi at Lehigh, a house officer, and prominent Lehigh athlete. Brother Krehbiel was killed in an automobile accident.

The Psi Chapter has had a life re-

TURN TO PAGE 10

Florida Chi Phis Emphasize Service

FOR many freshmen, fraternity life is the stepping stone to leadership. The new student enters college completely bewildered. He is lost in a myriad of counselors, appointments, and a totally new environment. Some freshmen seem to remain that way throughout their four years of college. Others, however, successfully adapt themselves to their new surroundings. Slowly at first, but then more and more surely, they begin to look around at their new home. They observe, they form ideas, and finally they begin to participate in campus activities. These activities take many forms but for approximately 800 University of Florida freshmen, their first activity is pledging.

However, this is seldom these students' last activity. As mentioned before, fraternity life is often a stepping stone to leadership. Through his fraternity, the student sees all phases of campus life, far more so than does the student isolated in a dormitory. He can pick and choose those activities that interest him most and, often through the influence of an upper-class fraternity brother, he can obtain a good position in the activity of his choice.

Chi Phi encourages all its members to participate more fully in campus life. Evidence of this encouragement can be seen in the wide range of activities entered into by Chi Phis. Brace Bateman, Blue Key member, former secretary of religion and assistant business manager of *The Alligator*, ran for vice president of the student body in last spring's elections. Don Bode, member of $\Phi H \Sigma$, freshman scholastic fraternity, is presently serving as freshman representative on the Honor Court. Eddie Donn, former secretary of $\Phi H \Sigma$ and former secretary of IFC, is also serving on the Honor Court as representative from the School of Engineering. Frank King, Chi Phi's president and former secretary of labor on campus,



Theta Delta celebrated its 25th anniversary on March 18-19. On Friday there was an open house. Saturday, following breakfast, a meeting preceded luncheon and the inter-squad football game. Brother Rosser was the keynote speaker at the dinner party. Some of the Alumni were, seated, left to right: Howard Weems, Jr., Gamma '44, Theta Delta '48; Steve Stacklin, Theta Delta '54; Bob Griffin, Theta Delta '35; Bob Cody, Theta Delta '40. Standing: Charles Strange, Theta '11, Omega '13; Dick Respass, Omega '45; Judge Luther Z. Rosser, Omega '08. Theta Delta '37, National Director Emeritus; Jop Roberts, Theta Delta '57



Wednesday night candlelight suppers at Theta Delta bring co-eds to the house

is chief justice of the Traffic Court this semester. Brian Ellis, the fraternity pledgemaster and a candidate for the Executive Council last spring, is a member of the Football Seating Committee. Marty Jensen, Chi Phi's dining room manager, is serving this semester as president of the Sales Club.

Chi Phi feels that the influence of a fraternity should extend off of the campus and into the local community. Our annual Christmas party for the underprivileged children at Sunland Training Center has become a local tradition. Winning the IFC Blood Drive, the most worthwhile cause sponsored by IFC, for the past five



On Saturdays pledges have homework to do at Theta Delta



For the past five years, Theta Delta men have led in the IFC Blood Drive

years has brought Chi Phi wide recognition in the Gainesville community. A year ago Chi Phi was the recipient of a certificate for outstanding service to the Student Religious Assn. These and other achievements have made many local citizens realize that Chi Phi is more than a club, more than a living organization. Through activities of Brothers on campus and through the whole Fraternity's participation in local affairs, the campus and the community realize that Chi Phi is a close-knit Brotherhood whose activities extend into practically every facet of campus and community life.

Lehigh

FROM PAGE 8

warding to members at Lehigh for almost 90 years. During this period the Brothers have established the pattern of life which we enjoy today. We hope that the incoming pledges will aid in keeping the traditions alive and that they, in turn, will be generously rewarded.

Outstanding are '63 Illini

by Steve Allison, Zeta

SIGMA can boast of last year's pledge class being one of the best in many years. Scholastically, the '63's did very well. When the mid-term grades were received, our pledges ranked 10th among the pledge classes of the 57 fraternities on the campus. As the semester ended, the '63's were only a few places below their previous rank, and still ranked above the all-fraternity average. Because of the scholastic attainment of our pledge class, a larger percentage of pledges were initiated than in several years. The 12 men initiated also constituted a larger percentage than the all-fraternity average.

However, making grades wasn't the only thing the '63's did. We were proud to see our pledges in numerous campus activities. Several participated in the University Theater, one of them doing some acting. One '63 was elected president of the Y.M.C.A. and served on the Student Senate. A head photographer for the campus newspaper was also among the last year's pledge class. Another who earned a 4.9 average was chosen Outstanding Cadet of the Year.

Our trophy collection was increased when another freshman took second place in intramural swimming. In addition to intramural sports, two freshmen participated in varsity sports. One is already playing second and third

string quarterback with the Fighting Illini. The second man is on the varsity fencing team.

Realizing the success and achievements of its pledge class last year, Sigma wanted to alter the program slightly to make it even better. After discussion with Dean Parks, Dean in charge of Fraternity Affairs, and discussion among ourselves, several changes were made. Under last year's system, all pledges studied together in a type of seminar or study hall held in a large room. Furthermore, under the previous system, each pledge roomed with an active. This year the pledges will room by themselves. The entire third floor of our house will be used only by pledges, with the exception of the pledge trainer. The pledges will not study together as they did last year. Instead, they will study in their own rooms with their roommates. Contrary to belief, the halls and rooms on the third floor will not be checked constantly or supervised by active members. It is felt that by letting pledges live by themselves, they will receive a greater sense of responsibility than by living with actives.

In spite of the success of our pledge class last year, we are hoping that, with these changes in our program, the achievements of this year's pledge class will be even greater.

Michigan House is Renovated

by Richard Tanke, Beta

UNDERGRADUATE campus life is slowly fading away here at the University of Michigan. Fraternities and sororities are the only organizations still present which afford students an opportunity to be active in social and other extracurricular activities. Although it is not necessary to be a fraternity man to work on Michigras or Homecoming, for example, the bulk of these committees come from the fratern-

nity and sorority ranks. Most of the campus leaders—members of SGC, Union directors, League directors, etc.—are chosen from among fraternity and sorority men and women. These men and women carry on the fight to continue the activities typical of undergraduate campus life.

Through the years Alpha-Tau has managed to remain a leader among University of Michigan fraternities. Its

How to Study

A practical guide
to efficient work
habits for
students

by
Hastings Eells

THE ANTIOCH PRESS price 50 cents

Educational Trust Supplies Study Guide

IN effort to stimulate scholarship among the Chapters and with the knowledge that to improve the Chapter's scholarship over the long run, we must begin with the newest men, Brother Hunter, Scholarship Counselor, and the National Director recommended to the Chi Phi Educational Trust that a booklet entitled, *How to Study*, published by the Antioch Press of Antioch College, be furnished to each Chi Phi freshman pledge beginning with the fall, 1960, term. The Chi Phi Educational Trust appropriated approximately \$300.00 for the initial distribution. This is somewhat in the nature of an experiment, but even if it helps only a few of our freshman pledges to remain in school and achieve a better academic average than they would have otherwise, the program will have served a very useful purpose.

It will be the responsibility of the Chapter and particularly that of the pledge trainer and the scholarship chairman to see that this book is read by each pledge. It goes without saying that a lot of the upperclassmen could well afford to borrow one of the

pledge's books for a few moments and gain some benefits for himself.

This experiment, of course, is made possible through the contributions that have been made over the years to the Chi Phi Educational Trust and it is to be hoped that loyal Chi Phis will continue to remain interested in the Trust so that work of this nature can be carried on in the future.

Nu Hospitality

Hollywood, Fla.

DEAR CHI PHIS:

During April this writer had the pleasure of visiting Nu Chapter of the University of Texas. This new chapter house is a beautiful structure situated gracefully on one of the many hills of the "hilly" city of Austin. The house is impressive in its modern decor. Simple lines and the matching colors of the Texas hills combine to make this one of the choice fraternity establishments of today. One may view the rolling hills of Texas for miles from the spacious modernistic windows of this house which bears the mark of Frank Lloyd Wright.

We spoke of Judge Luther Rosser. Truly our "Mr. Chi Phi." They all seem to know him. Who could forget that "gravely" voice and devilish smile! Also, there were the tracks of Carl Gladfelder. He had been there recently.

On this visit I felt the cheery spirit of O. B. Williams. I could not forget him. His heart was in this house. I thought about him as I walked across the campus or stood in the impressive library under the tall tower.

The boys were a fine lot, and it was good to be associated with these young brothers of Chi Phi.

Fraternally,
MASON CRUM, Sigma '09 (Wofford)
Past Grand Beta

Dues and Views

ALONG with his Dues, *William L. Seibert*, A-T '15, wrote,

"During the winter season the following 'old timers' from Alpha-Tau have met in Pompano, Fla., and talked over old times at Chi Phi chapter house while attending the University of Michigan: R. G. Arner '15 (retired vice president of Sinclair Refining Co.); E. D. Atwater '16, Winnetka, Ill. (treasurer, Wrigley Co.); C. L. Atwater '19 (Pompano), formerly of Dearborn, Mich. (retired); John Dickinson (Sewall, Fla.), consultant; W. L. Seibert, Buffalo, N. Y. (retired vice president, Foster Milburn Co.).

Keep in Mind

CHAPTER AFFAIRS

Pi—University of Northwestern
Pledge Banquet, Sept. 21, Tally Ho Restaurant. All Alumni are invited to attend. For information contact R. Dillon Smith, Alpha.

Theta—Rensselaer Polytechnic Institute
Homecoming Weekend, Oct. 8. All Alumni invited. For information contact Edward L. Bok, Alpha.

Rho—Lafayette College
Rho Alumni Dinner, Vallamont, Oct. 22. Guests of Honor will be Rho men, Class of '35. For information contact James Hartsel, Alpha.

Xi—Cornell University
Alumni Weekend, Oct. 29-30. Contact Hal Binyon, III, Alpha, for further information.

CLUB AFFAIRS

Chi Phi Club of Colorado
Dinner Dance and Social Hour, Saturday evening, Oct. 22, at the Cherry Hills Country Club, Denver. Hosts for the affair will be Brother and Mrs. Robert L. McDougal, Alpha-Pi '24. For additional information contact Donald A. Countryman, 1018 Morning Star Dr., Colorado Springs, or Robert L. McDougal, 1100 Humbolt St., Denver.

Chi Phi Club of New York
Fall Cocktail and Dinner Meeting (no business), Oct. 24, Palmers Restaurant, 4 W. 49th St., New York City. All Brothers are invited—contact the following for reservations: William A. Weber, Z '43, 598 Montgomery St., Jersey City, N. J. Tel.: HEnderson 2-1040 (bus.); SWarthmore 5-0400 (home); Thomas J. Swartz, Jr., X '49, 18 Oak Hill Rd., Short Hills, N. J. Tel.: New York City, Wisconsin 7-7592; or James F. Callery, Jr., A '51, Chatsworth Gardens, Larchmont, N. Y. Tel.: Larchmont, TEnnyson 4-2638.

Chi Phi Club of Jacksonville
Sept. 1—RUSH luncheon at George Washington Hotel—1:00 P.M.
Co-host: Ralph Tillis and Steve Stacklin
Oct. 21—Covered Dish Supper
Co-host: Elmer Smith and Layton Whitehead
Luncheon — George Washington Hotel—1:00 P.M.
Nov. 1—Luncheon—George Washington Hotel—1:00 P.M. For further information please call Gray Ramsaur, EV. 9-7126.

AS you can see by the picture, the men of Rho like to participate in athletics. But besides having the opportunity to take part in intramurals, there are many other things to be gained from belonging to Chi Phi.

Chi Phi offers a closeness not to be gained by living in a dorm. There are well over 100 men in the average dorm at Lafayette, and I doubt if the right wing knows what the left wing is doing. Being approximately 40 members in number, we are able to get to know each other well. The fellowship of working and living together as a unit is perhaps the most important advantage a fraternity has to offer.

The men of Rho take an interest in each other. When one of the men is having trouble with his studies, the group cares. More than that, a boy in the same curriculum will take the time to straighten out the troubled boy. Jobs offered to the Brotherhood by the Fraternity have helped lighten the financial load of many Rho Brothers in the past. There are waiterships and several other paying jobs which can help a man through the lean college years.

The Fraternity gives a man a center of interest for which he can work and make use of his talents. There is the opportunity to be a leader of men and to gain valuable financial experience. The Chapter publishes an annual newspaper called *The Rho News* for which all the men are urged to write. But don't get the idea that a fraternity is all work and no play. We have an active interest in basketball, football, baseball, bowling, track, swimming, and ping pong. There are several parties each semester which are always successful.

When you belong to Rho Chapter, your interests and acquaintances broaden. You have the opportunity to work side by side with leading men of the community. Rho has a town-house committee which is composed of local Chi Phi Alumni and of the Brothers in the house. The committee meets regularly to face problems concerning the Fraternity and to make plans for broadening the activities of the Chapter.



Lehigh and Lafayette Chi Phis have inter-chapter games. Psi won this basketball game at Lafayette

Inter-Chapter Games Increase Fellowship

by Craig M. Shields

After you have graduated from college the friendships you have made do not end, for there are many occasions when the current Brothers of Rho invite Alumni back to the house. Chi Phi Alumni Associations located throughout the country offer the graduate the chance to continue the fellowship gained during the college years.

This has been a highly successful and growing year for Rho and we are looking forward with enthusiasm to the coming year. This past year the house has been improved physically. If the spirit and unity of the men is any indication, this year should be one of the finest we have ever had.

Xi Changes Training of Pledges

by W. K. Wakefield,
Pledgemaster

A MAJOR change in Xi's pledge program was instituted this year. This change is due to a recent decision by the Interfraternity Council and mainly to a reevaluation of past pledge programs.

After some unfortunate experiences

during pledging involving other fraternities, the following rules were made:

1. No phase of an informal initiation shall be of a non-constructive physical nature.

2. All phases of initiation must be supervised personally by officers.

3. Scheduling of initiation shall be such that it will not prevent a person from fulfilling his full academic responsibilities.

4. Ample amounts of food and sleep shall be insured so as not to impair the health or alertness of any members.

Some of the new phases of the pledge program include a new study system, an improved Big Brother setup, and provision for three pledges per week to live in the house.

New lights were purchased for the dining room, and a study table was enforced there. It ran from 7:00 P.M. to 11:00 P.M., Sunday through Thursday. Two Brothers per night attended as proctors and noise was kept to a minimum. The Brothers cooperated by keeping the bull sessions confined to the library.

All pledges with averages below the chapter average were required to attend study table four nights per week. Any others who, in the opinion of their Big Brother needed extra help, also attended. The Big Brothers determined this need by means of personal conferences and weekly grade reports. These weekly reports contained space for pre-lim, quiz, and other grades and were turned in to the Beta by the Big Brothers. This procedure provided a double check and was quite successful.

Two weeks after pledging began, the Brothers found themselves awakened by a smiling pledge. This was the duty of the three pledges who live in every week. Outside of this they had no extra duties and lived here as Brothers. They roomed with their Big Brothers and this also strengthened the Big Brother system. The pledges who lived in, enjoyed this privilege and felt that it served to better integrate them into Chi Phi.

An Interested Rushee Makes a Valuable Member

by Anthony C. Canike

MOST significant to perpetuation of the traditions and standards of Chi Phi through the operations and policies of Alpha Delta at Pennsylvania State University has been our rushing program. A well integrated program of financial stability, physical-plant pride, social responsibility, and chapter unity has been introduced to the rushees of the past year and will, in effect, form the basis of the pledge training this fall.

In reviewing the process used for rushing and pledging at Alpha Delta, there can be no one step more important than that of the initiative and interest on the part of the rushee. There are 54 fraternities with approximately 2,400 members in residence and to these men is left the task of meeting, knowing, and selecting prospective pledge classes from the 9,000 plus independent men. Naturally, a sincere interest is the first quality looked for in the time-consuming, expensive, and difficult process of selection.

Rushing begins with dinner invitations where rushees and fraternity men first come in contact with one another and observations for future selection made. House party participation is encouraged in order to see the rushee in a different light and to get to know him in a more relaxed atmosphere. Informal meeting on campus and rushing smokers are also part of rushing. Finally, selection is made through the following standards and qualifications: 1. Academic scholarship; 2. Financial ability and security; 3. Social responsibility; 4. Appearance and presentation of self; 5. Interest and initiative.

Pledging, upon qualification, concerns four points: 1. Vote by the Chapter and extending a "bid"; 2. Rushee's acceptance of bid—think and be sure, this affects your entire college career; 3. Semester average of 2.20 for preceding semester or an All-

University average of 2.00; 4. Formal pledging in March.

The keynote for the coming semester is UNITY. Without unity the Fraternity is nothing, but with it, a Fraternity will excel in everything from intramural sports to scholarship. Those beginning the program this semester are: James Griffin, Lenny Kershaw, John Sebastian, Bill Kinnan, Anthony Felice, Ronald Wood, John Powell, Phil Cozadd, Bill Michael, Dick Marsteller, and Dave McKee.

During their pledge semester they will learn the traditions, history, customs, and songs of Chi Phi and Alpha Delta. They will have a pledge project which is in conjunction with "Help Week" that means work, work, and more work. Pledge duties, basically house-cleaning, are daily chores of approximately 15 minutes. General obligations are academic, social and traditional.

The financial picture at Alpha Delta is very good, there being a surplus at the end of the school year. The ultimate authority in financial matters concerning the house and grounds is vested in the Alpha Delta House Assn., composed of a group of Alumni. The business of the Chapter, however, is left to the active members. The house treasurer, Hank Barner, is in charge of most of the chapter finances, subject to the approval of the Adviser, Charles Stoddart, who has contributed much to the success of Alpha Delta. The house bill of \$88 per month and the social fee of \$7.50 are the only contribution the members make to the house budget. This permits any man, regardless of his means, who is interested in belonging to Chi Phi to do so since other accommodations, dorms or private, are at least equal or above fraternity life in cost.

The new officers for fall are John Morton, Alpha; Phil George, Beta; David Irons, Gamma; Hank Barner,

Delta; John Cino, Epsilon; Anthony Canike, Zeta; Mike Weinmayr, Eta; and David Austraw, Caterer.

Socially, our Chapter is looking forward to a successful year of parties, socials, football weekend parties and big weekends, plus costume parties, barbecues, and jam sessions.

Alpha Delta takes this opportunity to welcome rushees to become candidates for membership in a Chapter which will ever maintain the honor of Chi Phi by building the man through fraternal effort.

USC Trustee

E. RUSSELL WERDIN, Eta Delta '32, president-elect of the General Alumni Assn., was elected to succeed Dr. J. Howard Payne '42, as the third Alumnus on the University Board of Trustees. Werdin is owner and general manager of the Los Angeles Paving Co. He is a past president of the Vernon Chamber of Commerce and the Vernon Rotary Club and is a member of the University Club of Los Angeles, Wilshire Country Club, Al Malaikah Temple of the Shrine, Royal Order of Jesters, and Pentalpha Lodge of the Masonic Order. He belongs to Trojan Club, Commerce Associates, and Chi Phi.

The new trustee and his wife, Henriette, have three children, a married daughter, a son in Valley State College, and a girl in Immaculate Heart High School.

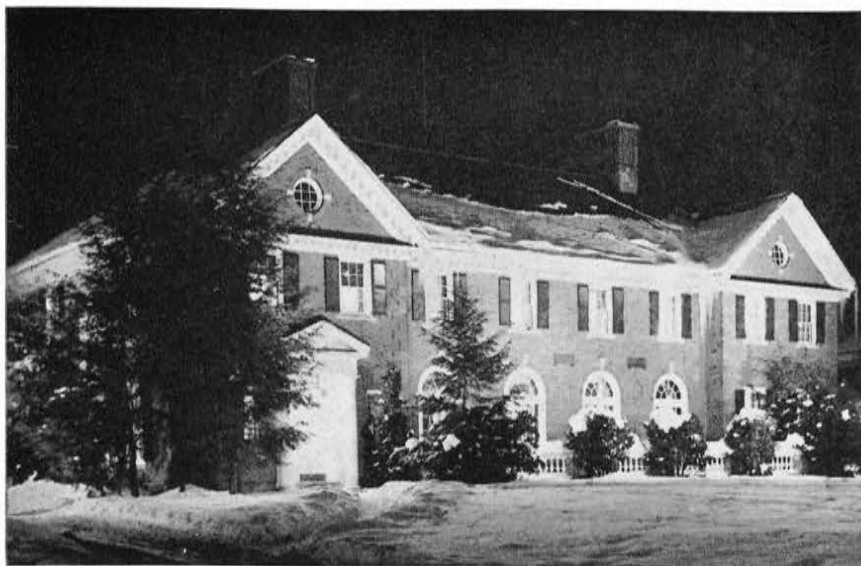
50 Years a Chi Phi

102 South Avolyn Ave.
Ventnor City, N. J.
April 8, 1960

DEAR BROTHERS IN CHI PHI:

I am deeply appreciative of the beautiful 50-year lapel pin which I received yesterday. Chi Phi has always meant a great deal to me, particularly in view of the fact that I did not receive my bid until my junior year. I had received others, but my eyes had been set on Chi Phi as my goal and I have never regretted that I waited. I really believe that the pledges who are not among the first to receive bids are far more appreciative of what it means.

Sincerely and fraternally yours,
HIRAM STEELMAN, Delta '11



Chi's house at Dartmouth is ablaze with light during Winter Carnival

Tau Pledges Place Second

by S. B. ATKINS

DURING April, Tau had their spring formal in a local hotel led by Jim Parker and Pam Nelson. Tau Day, our annual meeting of the Alumni, living in Alabama, and the Chapter, took place in April. The Birmingham and Central Alabama groups were represented and each of us greatly enjoyed the tales and "rag-chewing" of the day. Two other events of import took place on Tau Day. New officers were announced: Tommy Smitherman, Birmingham, Alpha; Ray Mitchell, Decatur, Beta; Nelson Noel, Yardley, Pa., Gamma; Jim Munroe, Windsor, Conn., Delta; Van Hayes, Fairfield Highlands, Epsilon; and Blair Atkins, Mobile, Zeta. The first issue of "Tau-1 Tales" was unveiled. "Tau-1 Tales," edited by Hurst Mauldin, Jr., Birmingham, and assisted by Jim Harden, Birmingham and George Kennedy, Troy, is to be our alumni publication. It will be published monthly during the school year and once during the summer.

David Zoellner, Tuscaloosa; Marvin Price, Fairfield Highlands; and Rex Ryland, Samson, were formally pledged. Later in the afternoon, new carpets for the stairs, purchased by our Mothers' Club, arrived. Thus, our new formally pledged pledges got the pleasure of laying the carpet in time for Brother Gladfelter's visit the following day.

On May 16, Brother Gladfelter landed at the airport to make his last, and we sincerely hope, not least, visit of the Chapters this year. Each of us enjoyed meeting him and we were highly pleased at his praise of our efforts this past year. Though we know that pursuit of our slogan, "Forward from the Fortieth," indicating our 40th anniversary

as a Chapter must not cease, we are happy and proud of our efforts thus far.

Briefly, some of the year's highlights included our Fall Formal; Homecoming, in which we entered a huge lawn decoration that should have had first place; 26 pledges who took second place scholastically among the campus pledge classes; 12 new Brothers, initiated after the first semester. Activity-wise, we are represented in each of the publications on campus, hold positions in the Student Government Assn., and have Brothers in various honoraries. In the field of music, there are Brothers in the band, the orchestra, and the Glee Club, plus our own little "Kingston Trio," composed of Brothers Mosely and Eagar, and Pledge Ingram.

Alpha Gains Alumni Support

AN effort has been made to reorganize the Alpha Home Assn. into the central core of an alumni association. Bill Kitchen and Campbell Clarke have spent a great deal of time with other Alumni too numerous to mention in organizing a well-knit group. The Alumni have supported the Alpha Chapter in the past not only financially, but with names of boys they know who are coming to the University. Their help has been an invaluable aid to the existence of the Alpha Chapter.

This year ushers in a new rush system for Alpha. Rushing will be completed by the first week in December and bids will be extended the second Sunday after Thanksgiving. There will be various parties given for the boys, including meals served in our dining room, so that they may become acquainted with fraternity life. The Alumni are all invited to enjoy the

festivities of a big weekend and we hope to see many old friends and familiar faces among the new in the coming year.

The pledge class has completed its project of fixing up a study room and lounge in the basement. The Chapter, as a whole, is working on the improvement of the physical portion of the house. Work on the plumbing and other facilities has been completed in the past year.

As in the past, Alpha put forth good intramural teams. The basketball team placed second while the golf team of Brothers Matheny, Johnson, Turner, and Ayres captured the team trophy.

Chi's Problems Are Training Tools

by W. B. SMITH, Past Alpha

CHI has accomplished much this year. The list of individual accomplishments is long. Fifteen Brothers are playing on varsity teams: soccer, football, track, swimming, hockey, baseball, golf, rifle, and wrestling. Winter Carnival was directed by a Chi Phi this year and will be again next year. The president of Carcajou Ski Club and the director of the Ski Patrol were Chi Phis. We are represented in various organizations including the yearbook, the Flying Club, the Geology Club (president), the Glee Club, among others. We have a cross-section of Dartmouth students ranging from two Phi Beta Kappas to some poor ones, but our Chapter continues to be above the college all-men's average.

As a Chapter we have fared well in interfraternity competition, placing second in interfraternity sports, second in the interfraternity quiz, and second in the interfraternity debate. In keeping with the spirit of the new fraternity president's pledge, we extensively revised our Chapter by-laws and added new sections condemning illegal behavior. To the surprise of a lot of people, these new rules are being used and abided by.

Chi is not without its problems. It would be foolish to claim otherwise. If it were, it would cease to serve as a training ground for those who are now guiding it.

Xi Operations Bring Profit

by HAL BINYON, III, Alpha

AFTER a successful rushing program, led by Dave Gordon '61, and well-supported by Alumni, we succeeded in pledging a fine class of 21 men. Under the supervision of Alpha Bob Waring '60, Beta Don Sayer '61, and Pledgemaster Bill Wakefield '61, a concentrated pledge program was undertaken. The climax, as you know, was

initiation on April 30. A major reason for this year's early initiation date was the fact that the freshmen have been so active on the Hill as well as at Craigielea.

We have enjoyed a good year financially in the house account and steward's account. Both show sizeable profits to date.

Back to the brighter side again, we are experiencing our best intramural athletic showing in several years. Recently Chi Phi finished second in volleyball and third in basketball in University competition.

The highlights of the term's social schedule have been the traditional Pledge Party; IFC Weekend including a Riverboat Party, the Pledge Formal, a Rock 'n Roll party, and a Milk Puncher; an extremely successful Faculty tea; and Spring Weekend, including an "Inferno" party, a Dixieland picnic, and a formal supper dance.

Mu Mothers' Club Is Liaison

by ANTHONY MIRABELLA

EACH year the entering freshmen at Stevens, as in many other colleges and universities throughout the country, ask the same question of fraternities, "What advantage is there for me in joining a fraternity?" Included in the answers given by the 10 fraternities on the Stevens campus are: 1. Long and lasting friendships; 2. More enjoyable surroundings; 3. Social functions.

Mu offers all these things to the freshmen but does not stop there. It is the belief at Mu that a fraternity should offer to the freshmen links between the Fraternity and the members' parents, the Fraternity and its Alumni, and the Fraternity and the school's Faculty.

The Mothers' Club at Mu is a well established organization which sees to the Chapter's wellbeing and which institutes programs to acquaint the new pledges' parents with the functions of the Chapter. Early in the fall term the Mothers' Club meets at the house to discuss with the officers of the Chapter, problems concerning repairs or replacement of old furniture. If it is decided that certain articles of furniture need replacement, the Mothers' Club sees to the purchase and presents them to the house as a gift. Not long after rushing, the Mothers' Club holds an informal gathering to which they invite all the pledges' parents and the faculty members of the school. The purpose of this tea is self-evident—to acquaint the parents with their son's choice of a fraternity and with his professors. Many parents have expressed their appreciation to the Mothers' Club for being given the opportunity to meet the members of the Brotherhood and the Faculty.

Mu also holds an annual Father and Son Blast consisting of a spaghetti dinner followed by a party. The dads usually get acquainted fast, and before long they are singing all the old songs or spinning yarns about how it was when they went to school.

Mu encourages strong alumni relations with the Chapter. Alumni are invited to the weekly meetings of the Chapter to help guide the Brotherhood in its affairs. On Alumni Day a buffet luncheon is arranged for the Alumni and their families. The Chapter also keeps the Alumni informed of current activities by means of newsletters.

In addition to attending the Mothers' Club gathering as mentioned before, faculty members are often invited to dinner with the Fraternity on Tuesday meeting nights. Both Pledges and Brothers use the opportunity to get to meet and know their professors through after dinner discussions.

Phi Plans Reading Course

by DAN CLARK

Phi's terrific rate of scholastic improvement over the past few years seemed to come to a standstill in 1959-60, and the Brothers were all relieved when the college decided not to make known the fraternity average rankings in the spring. There was no reason to be afraid, however, for as the year ended we could see that Phi had captured its share of the honors by Commencement time.

During the year Brothers Vetter, Weisfelder, Howland, Kozera, Mague, Masters, Thatcher, and Hazlett had worked their way onto the Dean's list. Dan Guthrie and Bill Vetter were elected into Sigma Xi, the national honorary scientific society. We were proud to claim two Phi Beta Kappas, Dick Weisfelder and Bill Vetter. Joel Mague received the Howard Waters Doughty Prize in chemistry.

Next fall Phi will initiate a reading course on modern French writers, taught by Prof. Elmo Giordanetti, the Adviser. From all indications the program will be a great success with the Brothers.

The first important event of the year was a party held in honor of John Jeffery Archer Amherst, Earl of Amherst, who came from England to visit the town on the occasion of its 200th anniversary celebration. Lord Amherst proved to be an extremely engaging guest, and we all enjoyed talking with him.

Sixteen sophomores and two French students were initiated into the sacred Brotherhood in October, 1959. At initiation the group found themselves a well-integrated body of friends, ready to take on the responsibility of running the Fraternity in the

future. Peyrelongue and Taillard are French students living in the house this year, the latter being the recipient of the Mme. Levy-Despas Scholarship, given each year in memory of Guy Levy-Despas, Phi '40, who was killed over Malta in World War II. Both were so well-liked by the Brothers that it was decided to initiate them.

When we came back to school this year, we found a new study room awaiting us in what used to be the game room. Peter Kaslauskas, our hard-working janitor, had done most of the labor involved, another example of how the industrious Koz is worth his weight in gold. We owe a debt of gratitude to Koz for keeping the house in such good shape the year 'round.

Elmo Giordanetti returned as Phi's Faculty Adviser. He has proved to be immensely popular, both with those who knew him before, and those who met him this year for the first time.

Delta Looks into Insurance Plan

by PEMBROKE SCHAEFFER

THE past semester has been one of great activity at Delta. Nine new Brothers were initiated after a successful Greek Week: Bob Tisch, Bill Nothnagel, Bob Dreyer, Bob Foster, Bob Ghaul, Art Goldberg, Pem Schaeffer, Lee Taylor, and Doug Smith. This year's Greek Week was the first one in which the Interfraternity Council's "Snooper" committee was used to check for the mistreatment of pledges. Delta Chapter was strict in upholding the IFC's rules, which abolished any form of physical hazing.

Brothers have been very active on campus the past semester. Alex Rizzer has been doing a creditable job in his newly elected position as president of the IFC. Bruce Ferretti has brought many improvements to the *Rutgers Engineer* since being elected editor-in-chief of that magazine.

The second semester saw Brothers and pledges enjoy a full social season. Junior Prom was the first big event of the season. This was the pledges' first big weekend as members in Chi Phi. Military Ball, the second big weekend of the semester, finished the school social season. The weekend began with a fried shrimp dinner on Friday. Later in the evening, Deltans and their dates enjoyed dancing to the music of Larry Elgart and his band at the University gym. Entertainment during the band's breaks was provided by Eddie Condon and his Dixieland band. The ball was entitled "Sayonara" as a farewell to the graduating Senior Class. The following morning at 7:00, Chi Phi played Zeta Psi in their annual touch football game at the University Heights. After a close victory by Zeta Psi, Chi Phi

and their dates were breakfast guests at the winner's house. Another highlight of the weekend was an excellent barbecued chicken dinner. Terry Claypoole and his assistants did a professional job in preparing the meal.

During the last week of classes, the Chapter gave a steak dinner in honor of the graduating seniors. The spirit and co-operation that the seniors gave will be sorely missed. The Chapter wishes the best of luck and success to Tom Hollinger, Ray Rodrigues, Bob Trebowski, Norm Hedrich, Terry Claypoole, and Malcolm LaBar.

The Brothers have decided to investigate a life insurance plan for the members of the house. The plan would call for small annual payments from the Brothers with the Chapter named as a beneficiary. This plan, if used, would remove the necessity for payments to the "Sinking Fund." Seven other fraternities on campus which have used the plan successfully will be the basis for the investigation.

The officers for the fall semester are: David Cole, Alpha; Bruce Ferretti, Beta; Dave Van Derveer, Gamma; Jim Coffee, Delta; Doug Smith, Epsilon; Pem Schaeffer, Zeta; Tim Schofield, Social Chairman.

Pi to Give Doc Wilson Party

by L. R. LATHOM

FALL is here again, and the Brothers of Pi are on the way back to Evanston from all over the United States, Canada, and Europe. Lance Kreps has spent the summer in Orleans, France, and John Terhune just returned from his summer tour of Europe. Under the leadership of Joel Russell, rush chairman, we have worked hard this summer to prepare for rush week, writing to prospective rushees, and visiting many of them from New Jersey to Florida, from Texas to Oregon.



Steve Ritchie, Pi '63, entertains at a sorority exchange in Pi's house at Northwestern

Looking back, spring quarter was a busy one. We participated in Northwestern's Mock Political Convention in the Nixon and Bowles coalitions, planning and carrying out various demonstrations, parades, and convention tactics. We not only found it interesting, but also educational.

Our social schedule was also very crowded since it included two of the biggest parties of the year. Al's Party at the Lambrect Farms in Wisconsin provided a very full day of swimming, golf, bridge, and dancing. The traditional Confederate Ball, held at the Tam-O-Shanter Country Club, was followed by Freshman Carnival, an all-university event, and our Bratwurst (a famous German sausage from Sheboygan, Wis.) Beach Party. The Carnival is an annual spring event in which the freshmen of each living unit enter a booth. The theme of our booth was "Midas and the Touch of Gold." The object was to hit King Midas' finger with a baseball. Doing so opened a trap door through which fell some coin-shaped chocolate candy wrapped in gold foil.

The Confederate Ball and Al's Party are on this year's social agenda, along with a thearte party and a number of various types of parties. One of the new parties to be added is the Doc Wilson Party, named for Dr. Wilson of Rossville, Ill., a man who will be remembered by Pi, many Alumni of Sigma Chapter, and those who attended Pi's 1959 Pledge Banquet. This annual banquet will be held this year on Wednesday evening, Sept. 21, at the Tally Ho Restaurant, and all Alumni are cordially invited to attend.

Theta Reunion Set for Oct. 8

by MIKE SMITH

THE officers for the fall term are Ed Bok, Alpha; Ron Del Principe, Beta; Bob Peterson, Gamma; Lee Weitzenkorn, Delta; Jon Cornell, Epsilon; Cliff Hubbard, Zeta; and Bob Bardajgy, Social Chairman.

Last year saw the Chapter rise to above the All Men's average for the first time in 10 years and, with the continued emphasis on scholarship, we ought to do even better this year.

With the graduation of only five seniors and the return of some members after a leave of absence, the Chapter is back at its ideal operating level of 30. Formal rushing this year will take place in the period of four weeks after open houses are held. With the added manpower, we expect to do even better than last year when 16 were pledged.

Bob Carlson '60 had a brilliant season in the nets for the lacrosse team. Jon Cor-

nell '62 and Bob Peterson '61 were on the varsity track team, while Tom Schellin '61 was number two man on the cross country squad. In publications, Gordon Brauningner '62 was elected to the senior board of the technical magazine, *R. P. J. Engineer*. Mike Smith '60 was vice president of the International Club.

Alumni Day, held on April 23, was a great success, with 15 Alumni returning. The men from the Class of '35 who came to receive their 25-year pins were Charlie Swift, George Endrich, and Fred Hauch. Also, back were Duke Darby '21, who did a lot to help make this day possible, Stan Chidsey '23, Ron Meehan '53, Arne Johnson '53, Charles Hornell '53, John Alber '56, Roger Rapp '56, Bob Andreini '57, Jim Shannon '57, Bob Attone '59, and our Adviser, Hank Lundquist '49. This year we are planning for an even better turnout. In the business meeting it was decided that the event would be held yearly towards the end of April.

R.P.I. will have its first Homecoming Weekend this year on Oct. 8. This is the first attempt being made to have all Alumni get together with the undergraduates in a school weekend. We hope to see a lot of Theta's Alumni back for this weekend.

Eta Makes House Improvements

by W. C. WINSHIP

ETA has initiated 10 members since Easter and has brought its number of new Brothers up to 31 since Christmas. Those recently initiated are Jimmy Cassel, Brunswick; Mike Crawford, Columbus; Jim Mann, Scott Henson, Rome; Ken Mac Arthur, Atlanta; David Inglis, Howard Hunnius, Athens; Lamar Walter, Longmeadow, Mass.; Grant Vernon, Dalton; Charles Ricks, Aiken, S. C. Scott Henson is the captain of the Georgia tennis team.

The new officers were elected on May 9: Jack Rollins, Savannah, Alpha; Mont Miller, Augusta, Beta; Edwin Strain, Rome, Gamma; Billy Dobbs, Atlanta, Delta; Don Lanier, Memphis, Tenn., Epsilon; and Wadleigh Winship, Atlanta, Zeta.

Plans are being made to improve the basement and living quarters of the house this summer, and a storage room on the third floor will be converted into a study room. The basement is to be enlarged and modernized, and on the second floor the rooms are to be refurbished, the floors are going to be retiled, and a new lighting system will be installed. These improvements should help a great deal during rush and make the house much more livable.

Eta's social calendar has been quite full during the last few months. Rush parties were held on March 4-5, and dates were supplied for the 75 rushees. "Piano Red"

and his band was the entertainment for the first night. The jam session for the afternoon of the 5th and the music for that night were emitted by the "Four Steps of Rhythm." The annual "Chakett Ball," which took place on April 22-23, was one of the best ever held. Roy Hamilton was featured both nights. On the evening of the 23rd, when the formal party was held, Anne Trobridge, KKT, from Augusta, was named Chi Phi Sweetheart.

Alpha-Alpha Has Long History

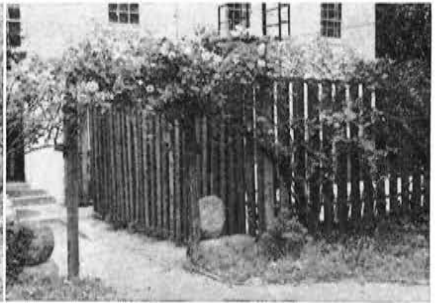
by BOBBY MEANS

ONE hundred and two years ago, in 1858, six young men decided to form a club of their own at the University of North Carolina. Accordingly, on August 21, 1858, they organized the Chi Phi Club which became the Alpha or Grand Chapter of what was later known as the Southern Order of Chi Phi Fraternity. The fortunes of the Chapter waned with those of the University, and in 1868, the Chapter was transferred to the University of Virginia. The old Alpha Chapter was reestablished under the new name of Alpha-Alpha in October, 1924.

Officers chosen for the fall semester of 1960 are Warren Jackson, Alpha; R. V. Fulk, Beta; Jerry Stokes, Gamma; J. R. Brown, Delta; Pete Wilday, Epsilon; Bobby Means, Zeta. Alton Russell was chosen to head our summer and fall rush program. Under his capable leadership, we are looking forward to a most successful rushing season. With a firm foundation of a successful high school rush during the spring semester, and several summer rush parties throughout the state, the Brothers are confident of an excellent pledge class for the coming year.

Alpha-Alpha Chapter feels that it has many advantages to offer to the incoming freshman. Foremost among these is the scholastic example set by the Brothers and the assistance offered to the pledges in their crucial first semester. Under the existing University regulations concerning fraternity academics, pledge scholarship should be uppermost in the mind of both the Chapter and the rushee. Chi Phi at the University of North Carolina expects the highest degree of scholarship and will do everything possible to attain and maintain this degree.

Alpha-Alpha feels that the well-rounded gentleman should be socially poised as well as intellectually advanced. To this end, Chi Phi maintains a well developed social program. This program includes parties with other fraternities, sorority mixers, combos after home football games, and the usual fun-filled Pledge weekend and beach weekend. Of course, German's weekends



Alpha-Alpha lives in this beautiful colonial house near the University of North Carolina campus. The patio at the rear of the house is a party place

are the occasion for a good concert and dance, usually followed by a "rocking" party at the house.

A positive advantage of fraternity membership is the Brotherhood. This Brotherhood is soon felt and sensed by the new pledge, and he learns to appreciate the warmth of unity and togetherness. These are displayed on the intramural field, in the Chapter, and on the campus.

Our house is one of the most beautiful on campus and we derive much enjoyment from it. There are living spaces for 36 boys, and the meals are of the highest quality and very enjoyable. Mrs. Isabel Campbell, our housemother, runs the kitchen in a very efficient manner, and stands ready to help us in any and all of our problems.

With these advantages, and many more besides, Chi Phi feels that it has much to offer the prospective pledge—for four years and for life.

Zeta Delta Teaches Leadership

by W. J. STOCKWELL and DAVID GOOGINS, Alpha

It is believed that Chi Phi at U-Conn is the top fraternity and by all indications will remain as the leader and example to all. Once again this exemplifies our pledge program which stresses the importance of activities to all pledges. Furthermore we feel that this and other suggestions are effective because the Pledge and the Brother are on an equal plane and suggestions and responsibilities are more readily accepted due to this. The Brothers have a responsibility to the Pledge which includes the teaching of the meaning, aims, and workings of the Chi Phi Fraternity as well as a push in the right direction on campus. The Pledge fulfills his responsibility by acquiring the above knowledge during the pledge program. Thus the greater harmony at the beginning brings the greatest level of agreement and success in the future.

In a few cases we have elected younger Brothers to office in an attempt to give them an opportunity to observe the work-

ings of the executive committee and gain experience for possible chapter leadership.

Chapter officers are: Alpha, Dave Googins; Beta, Paul Novak; Gamma, Charles Watras; Delta, Charles Glendon; Assistant Delta, Russ Stockman; Epsilon, Tim Nourse; Zeta, Doug Crawford; Steward, Fred Schmidt; Assistant Steward, Fred Larson; Corresponding Secretary, Bob McNamara; House Manager, Ken Stockman; Social Chairman, Bob Burler.

Larry Dupuis is editor of the student newspaper, *The Connecticut Daily Campus*. Peter Crooks edits the year book with Fred Statterman as assistant editor. Tim Nourse is president of the C.I.S.L. Dave Gorke heads the Aviation Club. Jim Groth is president of the Finance Club.

Spring semester, as are all spring semesters, was a great success socially. On March 12, our pledge class gave its pledge party which included a skit and the presentation of the paddles to their big Brothers. Acting social chairman was a pledge, George Appleby. The following weekend, the 19th, we held a Mardi Gras party at the chapter house. Parents' Day, held May 1, proved to be interesting and entertaining to all. Congratulations are due Al Kaminsky, Nick Fanelli, and Fred Kuhr. Our Brothers' Banquet, held on May 17, was as successful as always. Graduating Brothers were also given a last formal ovation. They are: Jim Sanford, Bob Cross, Gerry D'Avolio, Al Kaminsky, Bob Gai, Paul Madden, Greg Tuchay, Tom Yobbagy, John Zinser, Dick Fenton, and Dick Pignone.

Campuswide activities in which the Chapter has had success, are notably the winning of the Queen's Float for the Community Chest Carnival for the second consecutive year. It was designed by Paul Madden and construction was supervised by Lou Stamant. Chi Phi also took third place in the fraternity classification of the Greek Sing. A fine representation of the Chapter, directed by Song Chairman John Rea, won with the song, "Wait For Me, Darling." Athletically, we defeated all entries to cop the 1960 intramural track trophy. On April 5, the Chapter had the honor of playing host to the Queen's Coffee for the Community Chest Carnival.

Beta Members Are a Family

by FRED JANCEWIEZ, Beta

SEPTEMBER, 1960, marks the beginning of Beta's 11th year at "32." Since September, 1950, this Chapter has been situated in the Back Bay section of Boston, only a 12-minute walk from Tech, skirting our "Fraternity Row."

The fraternity system at M.I.T. is liberal compared with other colleges and universities. We are an autonomous living group, as are all of the fraternities at M.I.T. We plan our meals, order food, care for our house, pay our bills, and decide on our own house regulations.

Our home, 32 Hereford Street, is an old but solid structure. The five floors contain 28 rooms, providing living quarters for 38 Brothers and Pledges. Since its genesis in 1885 under the direction of Governor John Andrew, the house has passed through many hands. We intend to have no other owners.

Three meals a day, six days a week, are provided at Beta, with our cook, Roosevelt, taking Sunday off. Sunday becomes a day of adventure, with evening tales telling of the exotic foods that some of the more daring Brothers have found in Boston's fine selection of eating places.

Everyone at Chi Phi gets to know Arthur. Arthur, in turn seems to have known everyone at Chi Phi, for years past. Since his first days at our house on the Fenway, Arthur has been doing odd and large jobs around the house.

We at Chi Phi realize how new an experience M.I.T. is to the anxious freshman. We have tried to provide for our Pledges every opportunity to become acquainted with Tech. Quiz reviews are given before each of the Friday quizzes. These reviews are aimed at organizing one's ideas and at coordinating his understanding of the subject.

Chi Phi, to a Chi Phi, is home. It is a family away from home. The warm atmosphere of 40 people, each different in his own way from the other, is constantly at hand. Chi Phi has its share of planned parties, but many times the informal get-togethers on Friday and Saturday nights give much fonder memories. At least twice a month, Mom, our housemother, visits us. Stories of Alumni which many of the active Brothers have not even met, help her tell us of years at Chi Phi.

To the Chi Phi pledge, just these few words. Look forward to your four years at Tech. They will shape your personality; they will add much to your life. Try your very best and M.I.T. will be just a little easier.



"32"

Gamma's Charity Is Noteworthy

by BILL BORING

THE year of 1959-60, as all observers agree, has been a banner year at Gamma. Perfection has once more eluded us, but the direction in all categories is pronouncedly up and UP. An extraordinary spirit and enthusiasm have pervaded the Chapter and the apparent reasons for this spirit serve to recount the 1959-60 story.

A logical starting point is the successful fall rush. Thirty-five of the most outstanding rushees ended the week by pledging Chi Phi and going on to form a close-knit and energetic pledge class. They participated in social life, sports, and all other fraternity activities. The attractive study room which they constructed is exemplary of their attitude. Bob Efrid of Atlanta was presented the trophy as the most outstanding pledge at the annual pledge banquet.

The Gamma spirit was especially evident in many university activities. A skit called, "This Is Your Life, Fidel Castro," was our offering in the fall quarter "Skits-o-Frenia." This curious piece of satire earned a third prize for the Chapter in this competition. Pledge Harold Johnson demonstrated his musical talent in leading the singers of the Chapter to an excellent showing in the Interfraternity Sing. For Dooley's Frolics a colorful lawn display entitled, "The Admission of Hawaii as a State," was turned out by Bob Bowen and his efficient crew of artistic insomniacs.

The Gamma spirit was noted in the athletic realm. The winning of the interfraternity track championship was the high point of the year. Sprinters Henry Strozier, Merve Gould, and Hugh Lawson were too fast for the opposition in this big victory. Third places were won by the Chapter in wrestling and cross country.

Several opportunities for doing charitable work have been used by the Chapter with much zeal and credit. The Empty Stocking Fund, the Children's Christmas Party, and the Old Newsboys' Day for the benefit of Cerebral Palsy were the main instances.

The annual 25-year pin banquet was held in May with the presentation of pins to 10 Alumni who were guests of honor. The occasion was enjoyable for us as are all alumni visits to the Chapter.

In May was the new election of officers: Alpha, Dick Taylor; Beta, Dick Magruder; Delta, Mervin Gould; Epsilon, Bob Brinson; Gamma, Robert Kindley, and Zeta, Bill Boring. The new executive committee is planning for rush week and invites recommendations from Alumni. With several summer rush functions planned, the Chapter is hoping to make the 1960-61 story even more impressive than that of the current year.

Eta Delta Raises Scholarship

by DOUG NORWOOD

THE past year saw the chapter scholarship make an impressive improvement. The able counseling received from our Faculty Adviser, Dr. Nordscogg, was greatly appreciated. Leading the Eta Deltans was Paul Smedley's excellent 3.6 average.

At our annual Founders' Day Banquet, Ron Anderson received the Hoffman-White Award for outstanding achievement during the past year. Ron was vice president of Knights, a campus service organization, adviser to Squires, a member of the Senior Class Council, and a member of the '60 Club. The Chapter is very pleased to note that Morey Thomas, our Alumnus, Grand Gamma, has been selected by the University to be the Director of Alumni Affairs for the University of Southern California. E. Russell Werdin, another outstanding Alumnus, has been elected a Trustee of the University.

Alumni coordination improved greatly this year due to the efforts of our excellent Chapter Advisers, Gay Cowen and Geoff England. For the first time the Chapter and our Alumni Association agree on the basic goals which will lead to the construction of the new Eta Delta chapter house in the near future.

Campus-side the past year has been very successful. Things started off with a bang following our rush program. Our 16th annual Watermelon Dig after the Stanford game (which we won) saw 5,000 pounds of iced melon served to the happy Trojan rooters. Held in conjunction with the Dig each year is our Kick-Off Queen contest. Lovely Toni Montleone, ΔΔΔ, was crowned Queen and her court consisted of two charming princesses: Nina Smith, IIBΦ and Judy Lane, KAΘ.

Politics, always a controversial subject, was again carried on very successfully this year by Brothers Anderson, Kastigar, Hare, Lane, and Pledge Manley who were very active in student government. The Chapter is pleased to announce that Ron Lane has been selected as one of U.S.C.'s Yell Leaders for the coming fall. Bob Kastigar also got into the act when he was elected treasurer of Knights.

On the sports scene, the sound of track shoes, bouncing basketballs, bowling balls, and racing bikes could be heard. Frank McConnell competed as one of the U.S.C.'s ace high hurdlers. Don George, until hobbled by a broken ankle, was one of our leading lower hurdlers and pole vaulters. Dick Hare held down a forward position on the University's very successful frosh basketball team. Doug Norwood captained one of U.S.C.'s bowling teams in intercollegiate competition. Ken Starbird is practicing diligently toward gaining a berth on the United States Olympic Cycling Team. His favorite practice site is the famous Rose Bowl in Pasadena where the 1932 Olympic Cycling course was situated.

During our work week between semesters, designed exclusively for pledges, the actives pitched in and the house received a new paint job inside and out. The ceilings in the living room and kitchen were covered with acoustical tile. Bill Hare and Eugene Stubbe installed the tile with the craftsmanship of skilled artisans.

The Mothers' Club had a very successful year also. They held a Christmas Dinner and a Spring Bridge Luncheon to help raise funds. With these funds they purchased new redwood furniture for our front porch. They also had a new shower installed and got all the venetian blinds in the chapter house cleaned. The Alumni Association and the Mothers' Club divided costs for the paint and the acoustic tile.

The Brothers' good taste in choosing the opposite sex was reaffirmed again this year by the student body of U.S.C. Judy Primrose, KKI, our Kick-Off Queen two years ago, was selected Helen of Troy, Homecoming Queen. Last year our Queen, Carol Hoiby, KAΘ, was selected as the El Rodeo Queen. The *El Rod* is the university year book.

Selected to represent Eta Delta at the

Annual Congress, were Bruce Anderson and Robert Kastigar. Ron Anderson and Bill Hare will represent Chi Phi in the '60 Club.

It was our pleasure to have Brother Carl Gladfelter visit us during the past year. Brother Gladfelter is doing an excellent job as National Director and receives our praise. We are also pleased by the outstanding achievements of our Chi Phi Chapters throughout the nation and we know the list of achievements will continue to grow.

Omega's Mothers Work Hard

by JOHN PORTER

OMEGA Chapter began its rush season rather informally with a dance at the chapter house on May 14. Although this was not a rush party as such, there were several prospective rushees present. On the next afternoon, Sunday, there was a rush girls' tea at the house. Many girls from in and around Atlanta came, and there certainly will be no lack of rush girls this fall. On Friday, May 27, there was a swimming and water skiing party and a dance at Lake Lanier. Several prospective rushees came from out of town to this party, and everyone had a good time. Rush Chairman Bill Farr and his committee are to be congratulated on the fine job they are doing this year.

The Chi Phi Mothers' Club has been very active for the past few months. To help raise money for the Chapter, the Club entered the Community Club Awards contest. The Mothers' Club also supplied the needed funds for the down payment on a new refrigerator for the chapter house to replace the old one. Several of the mothers provided refreshments for the open house which was held during Greek Week. The Mothers' Club is to be commended for its interest and support.

On April 9, the annual formal, the Chakett Ball, was held at the Atlanta Cabana Motel. There was a buffet supper before the dance. Alpha Ned Neely presented the Chapter Sweetheart, Lucy Ranck. Lucy is the sister of Brother Bill Ranck, and this fall she will marry Brother Jim Lockwood. Our congratulations to John Kallelis on his fine job in making this dance the highlight of Omega's social season.

The new officers of the Omega Chapter are Blake Traylor, Alpha; Dennis Doherty, Beta; Gary Schuler, Gamma; Bob Engel, Delta; Bob Holman, Epsilon; John Porter, Zeta; and Walter Saville, House Manager.

News With Dues

1959 negotiated for Southeastern Drilling Co. of Dallas, the 1,000-well contract in Argentina, the largest contract ever let in the oil business.—W. N. DILLIN, N '36.

Nu Wins Campus Honors

by J. L. CARLSON

THE first full year of school in our beautiful new chapter house was an outstanding year of brotherhood for the men of Nu Chapter. The 14 pledges which were added during September rush week as well as the seven men pledged during the school year are worthwhile additions to our group.

During the first semester we held closed houses with the ΔΓΔs, the ΑΟΠs, and the ΔZs, as well as open houses after each football game. One highlight of the football season was the Baylor game and Dad's Day. An open house and luncheon were held for our parents preceding the game and Chi Phi won a first place trophy for the greatest percentage of parents attending. Our parents were enthusiastic about our new house and at this time our Mothers' Club elected Mrs. Paul Bolton to serve as president. The Mothers' Club project for the year was landscaping.

Rivaling the O. U. game in Dallas in importance was the Aggie game at Thanksgiving. Chi Phi won a second place in the Aggie Sign contest with a reproduction of the Tower, an outstanding landmark on the Texas campus. Our fall social season ended with our Christmas Formal.

Our second semester began with the building of a float for the Round-Up Parade. The Brothers made 60,000 paper flowers for the float which depicted "Life" at U. T. Two parties contributed to the success of Round-Up; one was a Western party and the other was an informal dance at the house.

One of the pledge projects was an ice cream party for the children at the Austin School for the Deaf. Pledges and Brothers alike worked together in the construction of a flagstone patio. We were delighted to have this project complete in time for a reception held for one of our Alumni, Walter Cronkite, Nu.

The year was marked with sadness on two occasions—in the fall by the death of O. B. Williams, Nu, Grand Alpha, and an Alumnus of our Chapter, and in the spring with the death of our last living charter member, Dr. Milton Brockett Porter, who was one of the founders of Nu Chapter in 1892.

Zeta Alumni Get Together

Informal get-together at No. 150 Reserve St. on 6/4: W. G. DIXON '51, DR. M. CHRISTY '51, DR. SAM LAPPE '51, DR. KARL KLINGES '52, L. D. MAGAI '51, J. G. KIRK '51 (all Zetans-F & M College).—WILLIAM G. DIXON, Z '51.

OFFICERS AND ROLL

Grand Officers

GRAND ALPHA: John E. Oliver, H '17, Ga. Savings Bank & Trust Co., Atlanta, Ga.
 GRAND BETA: Robert A. Lesch, I'D '50, 3041 Park Ave., Minneapolis, Minn.
 GRAND GAMMA: C. Moreland Thomas, H'D '45, 9632 Lemoran Ave., Downey, Cal.
 GRAND DELTA: Freeman Strickland, Q '24, First National Bank, Atlanta, Ga.
 GRAND EPSILON: John T. Porter, K '39, 707 1st National Bank Bldg., Madison 3, Wis.
 GRAND ZETA: Russell L. Guin, A-X '17, 19 N. Jackson St., Danville, Ill.
 GRAND ETA: C. Baxter Jones, Jr., I '40, 1516 First National Bank Bldg., Atlanta, Ga.
 SCHOLARSHIP COUNSELOR: Dr. Frederick M. Hunter, A'X '05, 2288 Fairmount Blvd., Eugene, Ore.
 RITUALISTIC COUNSELOR: Dallie Hall, I '60, 306-9th St., Apt. 8, Atlanta 9, Ga.
 NATIONAL DIRECTOR: Carl J. Gladfelter, A-T '33, Z.A., I.A., 308 Mark Bldg., Atlanta 3, Ga.
 NATIONAL DIRECTOR EMERITUS: L. Z. Rosser, Q '08, H '08, II '09, O.A. '37, A-M '39, Z '54, I.A. '58, Georgian Terrace Hotel, Atlanta 83, Ga.
 OFFICE OF THE COUNCIL: 308 Mark Bldg., Atlanta 3, Ga.
 COUNCIL REPRESENTATIVES - AT - LARGE: J. Campbell Clarke, Jr., A '50, 401 E. High St., Charlottesville, Va.; William E. Minshall, A '36, 8120 Kerry Lane, Chevy Chase, Md.; Kenneth Angleman, A '23, 232 Belvedere Ave., Fanwood, N. J.; M. L. T. Hughes, E '22, c/o T. S. Williamson & Co., Danville, Va.; Rev. James W. Moyer, Z '32, Mounted Route, Carlisle, Pa.; William W. Jeckell, I '34, 2706 Gilbert Ave., Cincinnati 6, Ohio; Richard C. Ham, A '33, 2100 Vallejo St., San Francisco, Cal.; H. Whitcomb Nicolson, M '17, 10 Barbary Lane, Short Hills, N. J.; Dr. Harper A. Scott, N '21, 1302 Sabine, Austin, Texas; A. H. Hutchinson, Q '09, 5701 S. Claremont Ave., Chicago 36, Ill.; Joseph R. Dockery, Q '28, Dockery Farms, R.F.D., Cleveland, Miss.; Robert A. Cummings, Jr., O '16, Box 1135, Pittsburgh 30, Pa.; Rudolph O. Schlosser, II '52, 529 Hazelwood Court, Glenview, Ill.; Herbert E. Wilkinson, II '17, Route 1, DeWitt, Iowa; Joseph E. Bell, P '28, Alumni Secretary, Lafayette College, Easton, Pa.; Irving B. Countryman, S '17, 1018 Morning Star Dr., Colorado Springs, Colo.; Samuel H. Cobb, P '13, Box 392, Chatham, Mass.; John K. Conneen, Y '30, 701 E. Third St., Bethlehem, Pa.; John M. Foushee, A-A '26, Box 877, Chapel Hill, N. C.; Richard S. Reade, Jr., A-T '33, 1310 Elm St., Plymouth, Mich.; Dr. George W. McClure, A-X '18, 2508 Auburn Ave., Cincinnati 19, Ohio; Lewis P. Kelley, B.A. '25, 682 Dexter Horton Bldg., Seattle 4, Wash.; Brig. Gen. Ewart S. Laue, B.A. '23, 1491 Martha Ann Dr., Los Alamitos, Cal.; Merritt W. Truax, E.A. '33, Truax Oil Co., 205 S. Columbia St., Salem, Ore.; Elmer H. Y. Hoffman, H.A. '18, 1024 Rowan Bldg., Los Angeles 13, Cal.; Ernest O. Tullis, A'X '39, 403 Pine Ave., Colorado Springs, Colo.; Howard V. Weems, Jr., I '44, O.A. '48, 2100 N.E. 6th Terr., Gainesville, Fla.; Walter V. Knopp, M '44, 302 Sunset Blvd., Wyckoff, N. J.; Frederick W. Krebs, E '12, 3813 Euclid Ave., Cleveland 15, Ohio; J. Pollard Turman, I '34, 285 Marietta St., N.W., Atlanta, Ga.; Hugh M. Dorsey, Jr., I '33, 310 Fulton Federal Bldg., Atlanta 3, Ga.; Charles T. Winship, I '26, P. O. Box 4028, Atlanta 2, Ga.; Robert S. Cody, O.A. '40, Box 891, Kissimmee, Fla.

Chapters

(A)-ALPHA (1859)—University of Virginia, 161 Rugby Rd., University, Va.
 Chapter Adviser—J. Campbell Clarke, Jr., A '50, 401 E. High St., Charlottesville, Va.
 Council Representative—William R. Kitchin, A '49, Saw Mill Rd., Stamford, Conn.
 Alpha—Grayson E. McInair.
 (B)-BETA (1873)—Massachusetts Institute of Technology, 32 Hereford St., Boston 15, Mass.
 Chapter Adviser—Francis B. Kittredge, B '21, 10 High St., Boston 10, Mass.
 Council Representative—Frederick B. Grant, B '39, Box 186, Wellesley Hills 81, Mass.
 Alpha—Luis F. Villalobos.
 (I)-GAMMA (1869)—Emory University, 8 Fraternity Row, Atlanta 22, Ga.
 Chapter Adviser—John R. Strother, Jr., I '57, 1420 Emory Rd., Atlanta, Ga., and G. Ernest Tidwell, I '53, 1713 Pelham Rd., N.E., Atlanta, Ga.
 Council Representative—William A. Haygood,

304 Healey Bldg., Atlanta 3, Ga.
 Alpha—Richard W. Taylor.
 (L)-DELTA (1867)—Rutgers University, 95 College Ave., New Brunswick, N. J.
 Chapter Adviser—Robert M. Frisch, A '50, 375 Gerry Rd., North Brunswick, N. J.
 Council Representative—Louis Wolfson, A '38, 257 Livingston Ave., New Brunswick, N. J.
 Alpha—David B. Cole.
 (E)-EPSILON (1867)—Hampden-Sydney College, Chi Phi House, Hampden-Sydney, Va.
 Chapter Adviser—Prof. Robert T. Hubbard, E '35, Hampden-Sydney College, Hampden-Sydney, Va.
 Council Representative—John Bruce James, Jr., E '53, 5502 Todd'sbury Rd., Richmond, Va.
 Alpha—George J. McVey.
 (Z)-ZETA (1854)—Franklin & Marshall College, 603 Race Ave., Lancaster, Pa.
 Chapter Adviser—Harry K. Lane, Z '55, 609 State St., Lancaster, Pa.
 Council Representative—Donald Mylin, Z '14, R. D. 1, Conestoga, Pa.
 Alpha—Richard M. Barrett.
 (H)-ETA (1867)—University of Georgia, 290 S. Lumpkin St., Athens, Ga.
 Chapter Adviser—John J. Wilkins, III, H '56, 225 Millidge Circle, Athens, Ga.
 Council Representative—John H. Clifton, H '53, 640 Trust Co. of Ga. Bldg., Atlanta, Ga.
 Alpha—Jack B. Rollins, Jr.
 (Theta)-THETA (1878)—Rensselaer Polytechnic Institute, Sage Ave. and 15th St., Troy, N. Y.
 Chapter Adviser—Henry E. Lundquist, '49, 957 Spring Ave., Troy, N. Y.
 Council Representative—Frederick M. Tibbitts, Tri-City Produce Co., Inc., Railroad Ave. & James St., Albany 5, N. Y.
 Alpha—Edward L. Bok.
 (I)-IOTA (1883)—Ohio State University, 2000 Indiana Ave., Columbus, Ohio.
 Chapter Adviser—William C. Hutchison, I '47, The Hutchison Agency, Huntington Bank Bldg., Columbus 15, Ohio.
 Council Representative—James D. Pickens, I '46, 5850 Sunbury Rd., Gahanna, Ohio.
 Alpha—Hugh F. Groth.
 (K)-KAPPA (1916)—University of Wisconsin, 200 Langdon St., Madison, Wis.
 Chapter Adviser—John W. Johnson, K '57, 1 North Pinckney St., Madison 1, Wis.
 Co-Chapter Adviser—George W. Crownhart, K '58, 1904 Jefferson St., Madison, Wis.
 Council Representative—Lloyd M. Strobe, K '21, 230 North Michigan Ave., Chicago 1, Ill.
 Alpha—David Asmus.
 (A)-LAMBDA (1875)—University of California, 2722 Durant, Berkeley, Cal.
 Chapter Adviser—Hubert R. McCoy, A '52, 6604 Dana St., Oakland, Cal.
 Council Representative—James R. Moore, A '33, 3802 Happy Valley Rd., Lafayette, Cal.
 Alpha—Ken Meade.
 (M)-MU (1883)—Stevens Institute of Technology, 801 Hudson St., Hoboken, N. J.
 Chapter Adviser—Charles S. Swenson, M '54, 63 High St., Glen Ridge, N. J.
 Council Representative—Walter V. Knopp, M '44, 302 Sunset Blvd., Wyckoff, N. J.
 Alpha—Frederick J. Clarke.
 (N)-NU (1892)—University of Texas, 2518 Leon St., Austin, Texas.
 Chapter Adviser—William G. Swenson, N '44, Capital Nat'l. Bank Bldg., Austin, Texas.
 Council Representative—Dr. Robert B. Morrison, N '33, 801 Capital National Bank Bldg., Austin, Texas.
 Alpha—Jack R. Binion.
 (Xi)-XI (1868)—Cornell University, 107 Edgemoor Lane, Ithaca, N. Y.
 Chapter Adviser—W. Barlow Ware, X '47, c/o Day Hall, Cornell Univ., Ithaca, N. Y.
 Council Representative—A. H. Hutchinson, X '09, 5701 S. Claremont Ave., Chicago 36, Ill.
 Alpha—Hal O. Binyon, III.
 (O)-OMICRON (1877)—Inactive
 (II)-PI (1952)—Northwestern University, 550 Lincoln St., Evanston, Ill.
 Chapter Adviser—Philip M. Guzzetta, '57, 3309 Thornberry Dr., Glenview, Ill.
 Council Representative—H. Frank Hartel, P '51, II '51, 1531 Evergreen Terrace, Glenview, Ill.
 Alpha—R. Dillon Smith.
 (P)-RHO (1874)—Lafayette College, Vallamont, Easton, Pa.
 Chapter Adviser—Capt. K. L. Jackson, ROTC Dept., Lafayette College, Easton, Pa.
 Council Representative—R. T. Schaller, P '40, P.O. Box 29, Easton, Pa.
 Alpha—James Hartsel.
 (Sigma)-SIGMA (1912)—University of Illinois, 303 E. Chalmers St., Champaign, Ill.
 Chapter Adviser—Richard J. Jones, S '50, 1001 W. University, Champaign, Ill.
 Council Representative—Nolan N. Hodges, S '37, 265 E. Green St., Champaign, Ill.
 Alpha—Brian M. Berg.
 (T)-TAU (1920)—University of Alabama, Box 1265, University, Ala.
 Chapter Adviser—E. Joseph Kane, T '56, c/o Liberty Mutual Ins. Co., 511 S. 20 St., Birmingham 3, Ala.
 Council Representative—Tom Russell, T '25, Alexander City, Ala.
 Alpha—Thomas C. Smitherman.
 (Phi)-PHI (1873)—Amherst College, Amherst, Mass.
 Chapter Adviser—Prof. Elmo Giordanetti, Am-

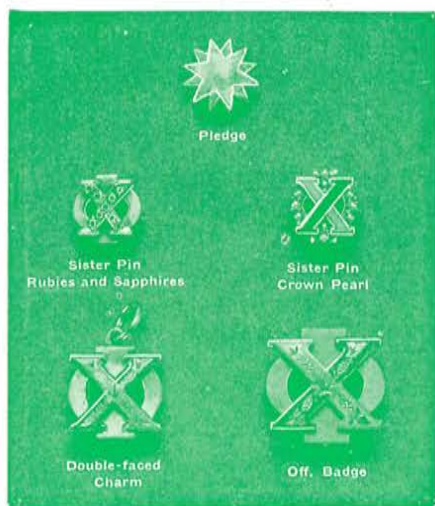
herst College, Amherst, Mass.
 Council Representative—Prof. Willard L. Thorp, Phi '20, Harkness Rd., Pelham, Mass.
 Alpha—Richard Howland.
 (X)-CHI (1902)—Dartmouth College, Chi Phi House, 11 E. Wheelock St., Hanover, N. H.
 Chapter Adviser—Calvin E. Knights, X '51, Norwich, Vt.
 Council Representative—Harold S. Fuller, X '12, Peterborough Rd., Hancock, N. H.
 Alpha—Ford A. Daley.
 (Psi)-PSI (1872)—Lehigh University, Sayre Park, Bethlehem, Pa.
 Chapter Adviser—John K. Conneen, Psi '30, 701 E. Third St., Bethlehem, Pa.
 Council Representative—L. W. Mandenhall, Psi '29, 1011 E. Rittenhouse St., Philadelphia, Pa.
 Alpha—Carl F. Meitzner.
 (Omega)-OMEGA (1904)—Georgia Institute of Technology, 720 Fowler St., N.W., Atlanta, Ga.
 Chapter Advisers—E. K. Van Winkle, Omega '24, 805 Peachtree St. Bldg., Rm. 573, Atlanta, Ga., and Eugene D. Scott, Omega '52, 1233 Healey Bldg., Atlanta, Ga.
 Council Representative—Charles M. Davis, Omega '55, 174 Peachtree Battle Ave., N.W., Atlanta, Ga.
 Alpha—S. Blake Traylor.
 (A-A)-ALPHA-ALPHA (1924)—University of North Carolina (Re-established, former Alpha Chapter, 1858-1868), 300 S. Columbia St., Chapel Hill, N. C.
 Chapter Adviser—Dr. Robert J. Senior, Z '49, Lennox Bldg., Chapel Hill, N. C.
 Council Representative—J. Maryon Saunders, A-A '25, West University Dr., Chapel Hill, N. C.
 Alpha—Warren B. Jackson.
 (A-T)-ALPHA-TAU (1882)—University of Michigan, 1530 Washtenaw Ave., Ann Arbor, Mich.
 Chapter Adviser—Richard S. Reade, Jr., A-T '33, 1310 Elm St., Plymouth, Mich.
 Council Representative—Palmer E. Bollinger, A-T '31, 835 Yarmouth, Bloomfield Village, Birmingham, Mich.
 Alpha—Phillip M. Idema.
 (A-X)-ALPHA-CHI (1873)—Ohio Wesleyan University, 216 N. Franklin St., Delaware, Ohio.
 Chapter Adviser—Wyford D. Jones, A-X '34, M.R. 9, Radnor Rd., Delaware, Ohio.
 Council Representative—Dr. M. S. Cherington, A-X '18, 18 W. Winter St., Delaware, Ohio.
 Alpha—James W. Backhaus.
 (AA)-ALPHA DELTA (1924)—Penn State University, Box 797, State College, Pa.
 Chapter Adviser—Charles W. Stoddart, Jr., AA '31, 331 W. Fairmount Ave., University Park, Pa.
 Co-Chapter Adviser—Prof. Jack H. Vincent, AA '35, Pennsylvania State Univ., University Park, Pa.
 Council Representative—James A. Dunlap, AA '54, 504 Mt. Vernon Blvd., Hamburg, N. Y.
 Alpha—John T. Morton.
 (BA)-BETA DELTA (1925)—Inactive.
 (Gamma)-GAMMA DELTA (1928)—University of Minnesota, 315 19th Ave., S.E., Minneapolis, Minn.
 Chapter Adviser—Harold R. Gabrielson, Gamma '32, 5537 11th Ave. So., Minneapolis, Minn.
 Council Representative—Robert A. Lesch, Gamma '50, 3041 Park Ave., Minneapolis 7, Minn.
 Alpha—Clark H. Johnson.
 (EA)-EPSILON DELTA (1931)—Oregon State College, 2535 Taylor, Corvallis, Ore.
 Chapter Adviser—Emery V. Hildebrandt, EA '50, Speech Dept., Oregon State College, Corvallis, Ore.
 Council Representative—George B. Davis, EA '39, Dept. of Farm Management, Oregon State College, Corvallis, Oregon.
 Alpha—Robert D. Moody.
 (Zeta)-ZETA DELTA (1956)—University of Connecticut, Storrs, Conn.
 Chapter Adviser—
 Council Representative—Anthony J. Dalessio, Zeta '56, Phi '56, Valerie St., Waterford, Conn.
 Alpha—David W. Gooigins.
 (Heta)-ETA DELTA (1934)—University of Southern California, 720 W. 28th St., Los Angeles 7, Cal.
 Chapter Advisers—Geoffrey England, Heta '56, 444 Chautauqua Blvd., Pacific Palisades, Cal. and Gaylord W. Cowan, Heta '48, 1147 Truro St., Inglewood, Cal.
 Council Representative—John D. McPherson, Heta '50, 308 3rd St., Manhattan Beach, Cal.
 Alpha—Bruce B. Anderson.
 (Theta)-THETA DELTA (1935)—University of Florida, 1225 S.W. Second Ave., Gainesville, Fla.
 Chapter Adviser—Ned H. Scott, Theta '41, 1515 N.W. 5th St., Gainesville, Fla.
 Council Representative—Dr. Howard V. Weems, Jr., I '44, O.A. '48, 2100 N.E. 6th Terr., Gainesville, Fla.
 Alpha—Frank M. King.
 (Iota)-IOTA DELTA (1958)—Indiana University, 814 E. Third St., Bloomington, Ind.
 Chapter Adviser—Calvin Hamilton, Iota '49, R.R. 19, Box 120, Indianapolis 20, Ind.
 Council Representative—Robert E. Secor, K '35, 6920 N. Park Ave., Indianapolis, Ind.
 Alpha—Donald Deganutti.

Thank You!

The Council wishes to acknowledge the splendid response in 1959-60 to the annual request for Alumni Dues contributions. Approximately 3,200 Alumni gave to either the Chi Phi Educational Trust or the Fraternity. The Council uses these funds to help defray the cost of publishing CHAKETT, and to provide extra copies of this issue to each Chapter for use in rushing. Expansion costs money. By the time Iota Delta, University of Indiana, and Zeta Delta, University of Connecticut, were formally installed, the Council had invested over \$3,000 in each colony. Alumni Dues support expansion and have made the University of Oregon Colonization project possible. Alumni giving enables the Fraternity to support the National Interfraternity Council program. The many other uses to which the funds are put is too long to list.

The Council is well aware that Chi Phi Alumni are called upon for donations by Chapters and Chapter House Associations, and that many support the Fraternity at both the National and local level. The Council sincerely hopes it is using the funds thus at its disposal to the advantage of each chapter and Alumnus. We welcome suggestions or ideas from all Chi Phis, and in fact, need the benefit of your guidance and advice.

THE BADGE OF MATURITY



On campus and off, fraternity insignia today have a powerful new appeal . . . always smart, always in good taste, worn by discriminating men and women who respect their heritage of rich traditions.

THE BALFOUR BLUE BOOK . . . the famous catalog of gifts and personal accessories—shown in color. Many aids to gracious chapter living. Write for your free copy.

INSIGNIA PRICE LIST sent free on request.

Official Jeweler to CHI PHI

*Jewelry's Finest
Craftsmen*

In Canada

L. G. Balfour Company Ltd.
Toronto and Montreal

L. G. Balfour Company
ATTLEBORD, MASSACHUSETTS

You Can Help Rush!

Send rushing recommendations to the Rushing Chairman, c/o the Chapter, or to the Chi Phi National Office, 308 Mark Bldg., Atlanta 3, Ga. Recommendation form is provided at the bottom of the page for your convenience.

CHAPTER

ALPHA—Univ. of Virginia
 BETA—Mass. Inst. Tech.
 GAMMA—Emory Univ.
 DELTA—Rutgers Univ.
 EPSILON—Hampden-Sydney Col.
 ZETA—Franklin & Marshall
 ETA—Univ. of Georgia
 THETA—Rensselaer Poly. Inst.
 IOTA—Ohio State Univ.
 KAPPA—Univ. of Wisconsin
 LAMBDA—Univ. of Cal.
 MU—Stevens Inst. of Tech.
 NU—Univ. of Texas
 XI—Cornell Univ.
 PI—Northwestern Univ.
 RHO—Lafayette College
 SIGMA—Univ. of Illinois
 TAU—Univ. of Ala.
 PHI—Amherst College

CHI—Dartmouth College
 PSI—Lehigh Univ.
 OMEGA—Ga. Inst. of Tech.
 ALPHA-ALPHA—Univ. of N. C.
 ALPHA-TAU—Univ. of Mich.
 ALPHA-CHI—Ohio Wesleyan Univ.

ALPHA DELTA—Penn State Univ.
 GAMMA DELTA—Univ. of Minn.
 EPSILON DELTA—Oregon State
 ZETA DELTA—Univ. of Conn.
 ETA DELTA—U. of So. Cal.
 THETA DELTA—Univ. of Fla.
 IOTA DELTA—Indiana U.
 COLONY—University of Oregon

RUSHING BEGINS

September
 September 9
 September 11
 September
 September 21
 September 21
 October 16
 September 23
 September 11
 September 15
 2nd week February, '61
 September 5
 September 15
 February 28, 1961
 September 6
 September 6
 March, 1961
 September 25
 Spring, 1961
 September 20
 September 25
 October 14
 September 12
 Spring, 1961
 September 16
 September 26
 July
 September 24
 September 1

RUSHING CHAIRMAN

Robert W. Whitman
 Frederick A. Jancewicz
 Tom Rackley
 Alexander Rizzer
 Daniel W. McKeel, Jr.
 Richards H. Crawford
 Arthur T. Wilson
 Charles W. Wright
 Pete Raudseps
 John Markworth and Foster Friess
 Kent Jacobsen
 William J. Ullrich
 Jerry E. Long
 Michael S. Egan
 Joel W. Russell
 Bruce Applestein
 Robert J. Hoffman
 Melvin E. Thomas
 John Duryee; Dudley Lyons;
 Lewis Whitehead, Jr.
 Steven B. Atwater
 Carl F. Meitzner
 Fred F. Rudder, Jr.
 Frank A. Russell
 Robert R. Hooker
 Robert A. Richardson and
 Alan A. Alexander
 Anthony C. Canike
 Clark H. Johnson
 Mike Mulder
 David W. Googins
 Thomas Greeley and Geoffry England
 Frank M. King
 John Boxell
 Ennis Wuite, 1057 Patterson St., Eugene, Ore.

RECOMMENDATION FORM

Candidate Home telephone

Home address City & State

Graduate of (High School) Scholarship rating

Father's name and business

Chi Phi relatives or friends

Expects to enter College—Date

Campus address (if available)

Is any other fraternity rushing him? Which?

Remarks:

.....

.....

Submitted by: Chapter & Class Year

Address