



Randy Loos, outstanding UF graduate of 1977, is now fraternity's professional leader.

Loos Named New Chi Phi Executive

Randolph M. Loos (Randy to all) is Chi Phi's new Executive, assuming the position after confirmation by the Grand Council in Atlanta Dec. 2-3.

A 1977 University of Florida graduate in Finance, Loos came to Chi Phi from his position as Research Consultant with the Comptroller at rival Florida State University in Tallahassee. While there he served as Council Representative from the national fraternity, working with Nu Delta Chapter.

"I solicit all the help and advice I can get from alumni, and strong assistance also from the men of our active chapters," says Loos. "I believe strongly in our fraternity, with confidence in its Past, Present and Future greatness."

Loos served as Alpha, Beta and Delta for Theta Delta chapter, currently Chi Phi's largest, and received the Carl J. Gladfelter Leadership Award as Chi Phi's National Active of the Year in 1977.

At Florida, Loos was named the Outstanding 1977 Graduate, receiving the award from Alfred C. Warrington IV ThD '58, then president of the UF Alumni Association.

He was president of Omicron Delta Kappa leadership honorary, and vice president of Florida Blue Key, the UF leadership/service group.

Under his presidency, Theta Delta celebrated its 40th Anniversary with a Founders Day program which included an orchestra featuring the sweet music of the 30s.

Loos was born in Warren, Ohio, but moved to Florida where he graduated from Sarasota High School before entering the University.

A striking individual, 6 ft. 5" tall, slender, with a ready smile and business-like manner, Loos is unmarried, with his major hobby being membership in a sought-after Barber Shop Quartet, currently Florida State Champions, begun during his college days and still singing together.

Donohue Leaves National Office

Raymond J. Donohue Ome 61, National Director since the 1974 Sesquicentennial Congress, left the National Office on December 1, and will soon be entering private business.

Currently he is employed by the Chi Phi Educational Trust, and is updating the Trust's educational and promotional literature.

"I would like to express my appreciation to all the Actives and Alumni who have worked with me during my period in office," he says. "I believe we have alumni and chapters which are more outstanding than those of any other fraternity—as befits our status as the nation's oldest."

Chapter visitation was stressed during Donohue's time in office, and the total of alumni dues collected by National more than doubled during the four years.

"I'm also very proud that some \$45,000 was raised by our chapters for Muscular Dystrophy during my period in office," he states.

A permanent resident of Atlanta, Donohue works actively with his own chapter at Georgia Tech and its Omega Trust Association.

THE CHI PHI CHAKETT

Our 155th Year—Founded 1824

FEBRUARY 1979

Alpha-Tau Alumni Lead in New Dues

1254 alumni who have so far paid Voluntary Dues of \$25 or more for 1978-79 are listed on page 5. Below are those who paid \$250 or more ("Scarlet") or \$100-\$249 ("Blue") as requested this year for the first time.

Michigan alumni totaled nearly 20% of the 43 who responded at these levels.

Scarlet givers are:

Gamma (Emory)—William C. Warren Jr. '20.

Nu (Texas)—James J. Tarpey Jr. '51.

Psi (Lehigh)—Burgess Thomasson '59.

Iota Delta (Indiana)—Thomas A. Gehring '60.

In the Blue category are:

Beta (MIT)—W. Kenneth Davis '40. **Gamma**—Bates Block '40 H 42, Clifford M. Clarke '51, Isaac W. Tull Jr. '48 T '48, Charles T. Winship '26. **Epsilon** (Hampden-Sydney)—John B. Long '38 A-A '38. **Zeta** (Franklin & Marshall)—Lee P. Haacker '56.

Eta (Georgia)—William H. Black II '46, H. McKee Nunnally '41, Wilton E. Sweetin '48. **Kappa** (Wisconsin)—Emory H. Heuston '24, Harold C. Steinke '43, Robert H. Snyder '26. **Xi** (Cornell)—George H. Gordon '49.

Phi (Amherst)—John H. Doty '40 L '46.

Omega (Georgia Tech)—A. Thornton Kennedy '40 H '41, Talbert E. Smith Jr. '55, William C. Wardlaw Jr. '27. **Alpha-Alpha** (North Carolina)—John W. Pope '46. **Alpha-Tau** (Michigan)—Henry E. Crouse '30 M. Douglas Dunn '66, Henry C. Gildner Sr. '24, Harry H. Jones '54, Harry S. Kinney '32, Richard S. Reade Jr. '33, George L. Sawyer '24, Benjamin F. Sproat '48.

Alpha-Chi (Ohio Wesleyan)—James C. Hageman '32, Thomas M. Muchmore '48. **Theta Delta** (Florida)—Robert S. Cody '40 BZ '74, Harold H. Fox Jr. '37, Darryl McCall '50 C '52 PsiD '70, Arch R. Updike Jr. '43.

Inactive Chapters—**Nu**—Ray M. Keck Jr. '44, **Omicron** (Yale)—Raymond J. Wean Jr. '43, **Sigma** (Illinois)—Donald W. Hutchinson '25, Howard L. White '42. **Chi** (Dartmouth)—James D. Landauer '23. **Beta Delta** (Washington)—Kenneth A. Meserve '25.

Omega Alum Heads AmEx

James D. Robinson III, Ome 57, heads American Express Company, which is both one of the country's oldest and one of its most innovative companies.

Brother Jim has fond memories of his Chi Phi experience at Georgia Tech. His father preceded him as a Chi Phi, but at Emory.

The Robinson progression to chairman and chief executive officer of American Express in 1977 when he was 41 shows what motivated, well-educated men can do in today's world.

After his graduation from Tech, he served in the U.S. Naval Supply Corps 1957-1959, then studied for his MBA at Harvard Graduate School of Business Administration.

That led to work with Morgan Guaranty Trust Co. as an officer in various departments, until 1967 when he became assistant vice president and staff assistant to the Chairman.

The following year he became a General Partner in the Corporate Finance Department of White, Weld & Co., but joined American Express as Executive Vice President in 1970.

Prominent Alumni?

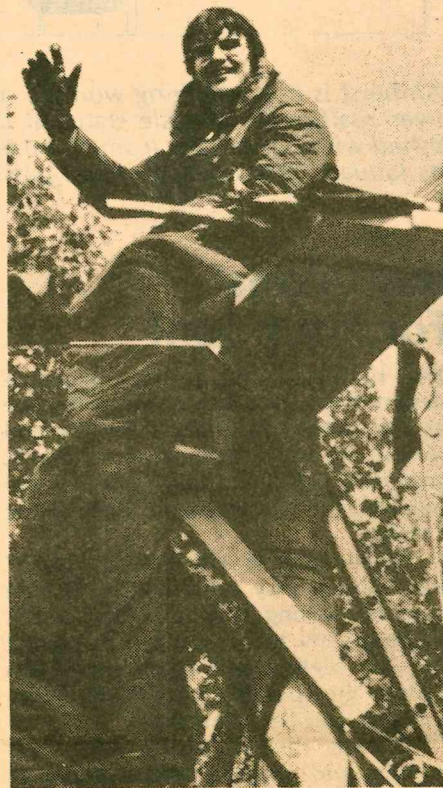
An Atlanta alumnus recently told us that Jim Robinson, chairman and chief executive officer of American Express, is a Chi Phi, and this story resulted.

The Chakett solicits information about prominent alumni. Knowing that a fellow Chi Phi has succeeded, whether as a businessman, a politico, a cleric, lawyer, doctor, civic leader... whatever... is an inspiration to our active members as well as to other alumni.

All that's needed if you don't have full information is the name and activity of the alumnus. We'll do the rest.

Leaders: AThX, K, AD, PhiD, ThD, DXi

Nebraska Nets \$11,000 in Trust's 77-78 MD Drive



Sleeping bag helped and an umbrella, too, as Indiana Pole-a-Thon raised thousands for MD to kick off Chi Phi's Trust-backed 1978-79 effort last Fall, with Rhode Is.

Nearly \$11,000 was raised last year for Muscular Dystrophy by Alpha Theta Chi Chapter at Nebraska—the fourth straight year that chapter has led in the charity campaign sponsored by the Chi Phi Educational Trust aided by gifts from former Grand Alpha Joe Rice Dockery Xi 27. (See details on page 3.)

Nebraska's Dance Marathon has taken in over \$52,000 since it was begun in 1975. Last year the total actually sent to Muscular Dystrophy was \$10,949, and as a result the chapter may be asked to send representatives to Jerry Lewis' Telethon Dance-a-Thon.

Another mammoth project was a state-wide Softball Tournament organized by Kappa Chapter at Wisconsin, which brought in a net of \$2,000 for MD—the first time Kappa participated.

Penn State's Alpha Delta Chapter was number three in donations for MD with \$1,554 with Balloon Days last April.

At Tennessee, Phi Delta raised \$670.88 with Pi Beta Phi cooperating by putting wheels on a bathtub and a (fully-clothed) co-ed inside, which rated two radio mentions and a four-column picture in a Knoxville paper. The tub was rolled five miles—from MD headquarters to the campus.

Six prizes were awarded for 1978 winners by the Trust:

Chapter size awards went to Wisconsin as a large chapter, Penn State as a medium-sized chapter, and Tennessee as a small chapter.

Community size brought a prize to Nebraska for a large city, to Florida for a medium-sized city, and to West Virginia Wesleyan for a small city.

A participant for each of the six years since Muscular Dystrophy was adopted by Congress as a national charitable project, the University of Florida chapter raised \$433.75 in 1978, and West Virginia Wesleyan which has participated for five years raised \$370.63.

Three other chapters took part, but Chi Phi's Executive, Randy Loos, hopes that more will be helping this important charity in 1978-79. Already, Indiana's Iota Delta Chapter reports raising \$2,380 in its week-long Pole-a-Thon Oct. 13-21 and Rho Iota Kappa netted \$3500 from its flagpole sitting in September.

"The Trust is quite pleased with the response of our chapters to this worthy effort," says Mel Jessup HD 43, chairman for the Trust. "We also appreciate very much the aid which Bro. Dockery gives in making the program possible."

Gamma Alumnus on National Frat Board

Despite its relatively small size, Chi Phi remains strongly recognized by other fraternities, members of the National Interfraternity Conference.

Bates Block, G 40, H 42, of Atlanta has been elected to the Board of Directors of the group which represents 48 social fraternities with over 4600 chapters on 650 campuses.

Richard Hamm L 33 of San Francisco served as Secretary of the body for several years, and both Luther Z. Rosser our first National Director, and Carl Gladfelter, his successor, were active.

Block, an attorney, is also chairman of the Legal Committee of the Conference, concerned now with liability matters as well as with tax deductibilities.

As Chi Phi's official representative to NIC, Block attends the Grand Council.



1957 Omega graduate is top man of American Express.

He became President and CEO Banking of AmEx International Banking Corporation in 1971, then in 1973 became the holder of two major responsibilities: Executive Vice President with responsibilities for Travel-Related Services Group and chairman of American Express Credit Corp.

His election as President of American Express Company came in 1975, and as Chairman and CEO in April 1977.

His other business interests include directorships in Bristol-Myers, Coca-Cola, Trust Company of Georgia and Union Pacific Corp., as well as memberships on the New York Stock Exchange listed company advisory council.

Civic responsibilities are: Director and Treasurer, Business Council for International Understanding; President, Memorial Hospital for Cancer and Allied Diseases; Member, Board of Overseers and Board of Managers, Sloan-Kettering Cancer Center; Advisory Council on Japan-U.S. economic relations; Director, National Energy Foundation; Trustee, Foxcroft School; Trustee, The Brookings Institution; Council on Foreign Relations; Economic Club of New York; Member, The Rockefeller University; Member, Pilgrims of the U. S.

Born in Atlanta, Brother Robinson is married, with children Emily and a son, James IV.

An Editorial:

Animal House: Don't Miss It!

One of the funniest movies this writer has ever attended is "Animal House"—the movie about two fraternities like none of us has ever seen.

One of these chapters does nothing by the book, the other does everything by the book. The reality of our own chapters should bear very little resemblance to either the mythical Deltas or the mythical Omegas. But all Chi Phis will see a bit of both these chapters in their own fraternity experience.

Whether intended or not, this is a movie with a moral.

To be a real, honest to goodness, useful fraternity . . . useful to your own members and to your college . . . you'd better be sure your chapter is preparing its actives for the real world.

Parties? Yes. Bacchanals? No. Personal achievement? Sure. Superiority? Destructive to your common sense.

Your chapter members must cooperate to stay alive—good advance knowledge for the young man who graduates and goes to work. Your chapter has to seek to help each member develop into a well-rounded, constructive citizen—not by rules alone but by that magic word, Friendship . . . and that other magic word, Concern.

One writer thinks fraternities will become more alcoholic because of Animal House. This writer believes strongly that college students are not that impressionable.

Want to Loan Money On a Chapter House?

Some alumni might find a well-secured mortgage on one of our Chi Phi houses financially beneficial to the lender as well as to the borrower.

For example, the Florida Chi Phi Association owns all four Florida houses. Currently, a balloon end mortgage on the Florida State chapter house is coming due. It is held by the individual who sold the house, but needs to be renewed on a permanent basis which may or may not be acceptable.

The property was recently appraised at a \$65,000 value, and the first mortgage sought will amount to \$35,000 or less. The Association has never missed making a mortgage payment on a first mortgage since it took ownership of the Theta Delta House in 1952. Going interest rates are paid.

If any alumnus is interested in Chapter House mortgages, contact the National office.

Rusty on Your Greek?

Here are the ancient original Greek letters, and today's Anglicized abbreviations, if you have trouble identifying your chapter.

A	A	Alpha	N	N	Nu
B	B	Beta	Ξ	Xi	Xi
Γ	G	Gamma	Ο	Omicron	Omicron
Δ	D	Delta	Π	Pi	Pi
E	E	Epsilon	Ρ	Rho	Rho
Z	Z	Zeta	Σ	Sigma	Sigma
H	H	Eta	Τ	Tau	Tau
Θ	Th	Theta	Υ	Upsilon	Upsilon
I	I	Iota	Φ	Phi	Phi
K	K	Kappa	Χ	Chi	Chi
Λ	L	Lambda	Ψ	Psi	Psi
M	M	Mu	Ω	Ome	Omega

THE CHI PHI CHAKETT

VOLUME 64, NUMBER 1
FEBRUARY 1979

Randolph M. Loos, Executive
Robert S. "Bob" Cody, Editor

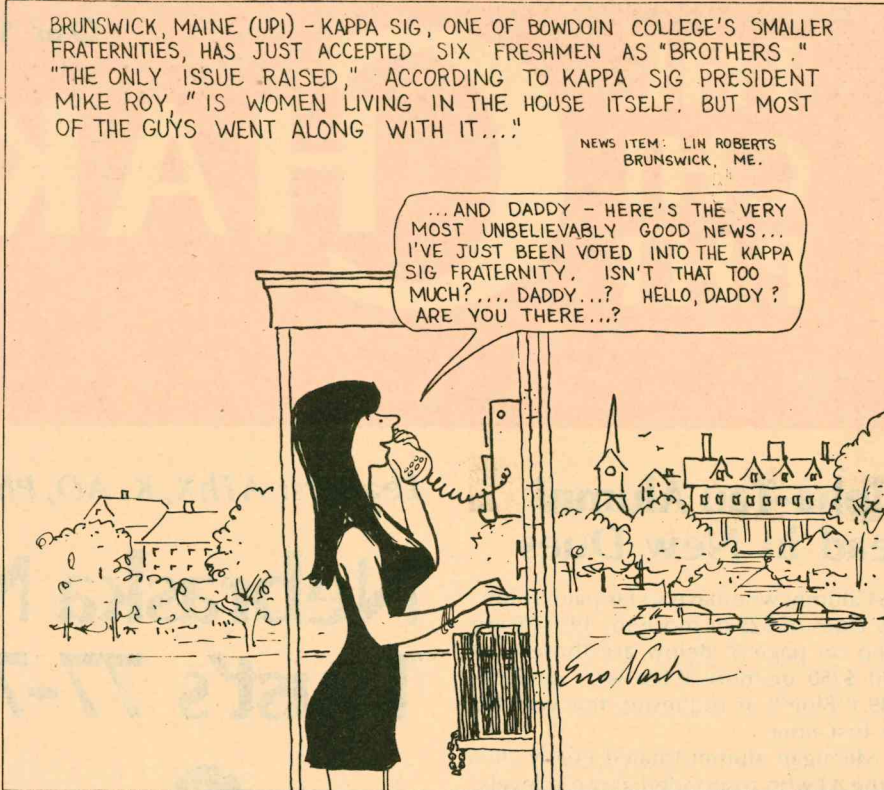
The Chi Phi Chakett is published in October, December, February and May by the Chi Phi Fraternity, 3400 Peachtree Rd., N.E. Suite 1041, Atlanta, Georgia 30326. Second class postage paid at Atlanta GA and at additional mailing office. Subscription rate \$5.00 per year. Single copies \$1.50.

TELEPHONE 404/231-1824

Chakett Deadlines

- March 15—May Issue (mail May 1)
- August 15—October Issue (mail Oct. 1)
- Oct. 15—December Issue (mail Dec. 1)
- Dec. 15—February Issue (mail Feb. 1)
- After Deadline News—305/847-4781

All Chapters: Chapter Notes Needed!



Amherst is now pledging women, so this is a live issue in Chi Phi, too. (Actives reaffirmed all-male status at last Congress, however.) Cartoon, published with permission from "Yankee" magazine, Dublin, N.H., appeared in its January 1976 issue, and was passed to us by Jim Martin A-X 32.

Buy 'Alpha' For Your Son?

The first issue of a new magazine designed for fraternity actives will make its appearance in every fraternity and sorority house in the nation in March, according to R. John Kaegi, founder and publisher of the magazine he's calling "Alpha."

While chapters will receive "Alpha" free, alumni may subscribe for \$9.40 a year by writing: Alpha, POB 161147, Memphis, TN 38116. You can also buy it for your high school senior son if you wish at the special rate of \$5.00. Issues will be published monthly.

Current campus issues, satire, job hunting and personal improvement all will have a place in the new magazine, says Kaegi, who edits Pi Kappa Alpha's "Shield & Diamond" magazine, but will use his new magazine to reach all actives in the fraternity system.

Cal vs. Stanford: Chi Phi Hid the Axe

Celebrated on the West Coast is the Stanford Axe, a tradition which began in 1899 when Stanford displayed a red-bladed axe at a baseball game between itself and California.

Who stole the axe is unknown, but it ended up "hidden in a space behind a sliding door in the Chi Phi House," and "was not found by a group of Stanford marauders," according to a story in *California Spirit*.

Says a newspaper report: "At the game itself, Stanford students brought the axe with them. Each time Stanford made a good play, the axe was enthusiastically brought down upon a block, thereby lopping off a length of ribbon," with the accompanying cheer, "Give 'em the axe." Incidentally, Cal won that game, and its partisans wrestled the axe away afterward.

Our Educational Trust: It Helps

Dozens of actives from virtually every chapter of Chi Phi have received Loan or Scholarship aid from the Chi Phi Educational Trust.

The Trust has received a large number of Thank You letters, several of which are reproduced here.

Donations to the Trust help make its financial help available to Actives.

"I Am Sure To Remember The Trust After Graduation"

Thank you for the scholarship from the Chi Phi Educational Trust. Upon completion of my degree I am sure to remember the Trust's aid and plan to help this worthwhile program to grow and expand.

Thanks again. Your money is invested well when you invest in People.

Law School Much More Difficult Says Alpha Grad

Enclosed please find a check in the amount of \$50.00. This money represents the first repayment installment on my educational loan. I believe that the amount is more than we agreed upon.

Thank you again for your help. My law school education would have been much more difficult without it.

Investment of Trust Paid Off With Mobil Job: Alpha Grad

Along with wishing you a Happy New Year I want to thank you for helping me finance my graduate education. I feel the investment has paid off since I have recently accepted an offer of employment with Mobil Oil Corporation in Chicago.

My final grade point average in the School of Labor and Industrial Relations was approximately 3.5 on a 4.0 scale. Thanks to the excellent quality and selection of courses available in the program, I feel that I have developed a strong background in EEO, OSHA, and labor law, personnel management, and labor-management relations.

As far as business matters are concerned, to bill me for the \$750 loan, I can be reached by mail at . . . Please inform me of the procedures and responsibilities for repayment of the loan and we can make arrangements from there.

Beta Alumnus Recommended Three Actives for Help

Once again, it is my pleasure to write in support of a fellow Beta in need of aid from the Chi Phi Educational Trust. This is the third time I have written to you in the past few years in this capacity, and I think it reflects a healthy resurgence of interest on the part of the Beta chapter in the activities of the National.

Aside from creating a broader base for support in future years, the aid of the educational trust also serves as an encouraging sign to the current actives that their participation in the National is a two-way, continuing involvement.

You will be pleased to learn that a fellow Beta I wrote in support of several years ago is nearing completion of his four years of medical school and preparing to enter into his internship.

Although the aid that was extended to him by the Educational Trust was only a small fraction of the total financial debt he incurred, its impact at the time, both in a financial sense and as a sign of encouragement, was quite significant.

From Eta, Scholarship "Helped Me Continue My Education"

I wish to express my sincerest appreciation for the scholarship awarded to me this past year.

ID's 20th Is Roaring Success!

by John Warner, Zeta

On the weekend of October 27-28 Iota Delta at Indiana celebrated its 20th anniversary. Over 300 alumni and wives attended the extravaganza.

By Friday evening a good number of alums had arrived, including Otto Linn, the first pledge to Iota Delta back in '58. Otto helped rush over 60 men into the house and really got the ball rolling at Indiana, but left school before he was initiated. Friday's highlight was his belated initiation, performed by none other than the charter officers.

By noon Saturday the house was buzzing with alumni and old Chi Phi stories.

The dinner, awards and dance party was held at the lavish, rustic Ramada Inn in Nashville, 10 miles east of Bloomington. Mr. Chi Phi, John Craft, received well deserved recognition in the form of a pewter bar set presented by the chapter, and a special verse of poetry from the infamous Inobi clan.

The dance was great and a good time was had by all. If you missed this one, by all means don't pass up our silver anniversary in '83. Iota Delta wishes to extend its greatest appreciation to its distinguished alumni for their generous contributions made to the chapter during the weekend, which enabled the chapter to purchase a much needed refrigerator, freezer, and 20-quart mixer for the kitchen.

Grand Alpha Darryl McCall glides with Iota Delta beauty at 20th Anniversary ball.



I am very thankful as this grant helped me to continue my education and also permitted me to enjoy the benefits of Chi Phi.

Psi Active Needed His Scholarship

I would like to thank you and the trustees for granting me a scholarship from the Chi Phi Educational Trust for the current school year. Since my expenses will be higher than anticipated the scholarship is most welcome.

Psi Member Could Not Have Devoted Time to Studies

Thank you for your letter of July 13. I deeply appreciate the generosity of the Trustees. Surely, without your help I could not devote my full time to the required studies.

A-A Active Sends Interest, Appreciation, Repayment

I am sending you at this time the balance due, plus additional interest of \$2.07 for two months, on the \$250.00 note that was due September 30, 1978. I made a partial payment of \$150.00 on October 11, 1978. The final balance due, which is enclosed, amounts to a total of \$115.61.

Thank you very much for the privilege of using our very valuable trust fund. I have recommended your services to several other Alpha-Alphas who need help and were unaware of your program. Thank you once again.

AD Recipient Finds Trust One of Many Chi Phi Benefits

This scholarship is only one of the many benefits I have enjoyed as a Chi Phi active. I thank you for your time and the



ATHX MC Marathon Year-Long Project

by Steve Schneiderwind ATHX 73

Awards, rewards, weary legs, and a great feeling of pride belong to the brothers at the University of Nebraska for their countless hours of hard work raising money for Muscular Dystrophy.

Four years of dance marathons held by the chapter have raised over \$52,000 for the fight against Dystrophy. Each of these four years the Alpha Theta Chi dance marathon has been the leading money raising project at Nebraska, and also Chi Phi's leader.

The elements for success? Simple!

First find a Brother who is willing to devote a full year of work to a job that requires more time than the Alpha's and that has more responsibility than the House Manager, Steward, Pledge Trainer and Treasurer combined.

Second, find a local radio station that will arrange music, announcers and radio advertisements.

Third, arrange to use the Student Union for 30 straight hours. Fourth, find two dozen local merchants to sponsor food, drinks, and prizes.

Finally, you will need to find at least 50 couples who will dance for 30 hours and who will seek advance donations for each hour that they dance.

Each dance marathon is a full year's project which involves every Brother, pledge, Little Sister and many alumni.

The marathons are usually held during the first week of March beginning at 6 o'clock Friday evening and continuing until Saturday midnight. Live bands provide most of the music with

the sponsoring radio station filling in with live broadcasts and taped music. The couples are allowed a four hour break from 4 a.m. to 8 a.m. on Saturday.

The dancing couples represent a large cross section of the University and the city of Lincoln. Most are recruited from other fraternities and sororities, and usually the largest number come from Chi Phi.

Each couple pays a \$5 entry fee for which they receive free food, drink and T-shirts. These couples are responsible for finding donors who will contribute money for each hour the couple dances. Donations usually run between 10 and 50 cents per hour. The 1977 Dance Marathon had one couple that was dancing for \$124 per hour.

When the dance marathon is over the leg weary dancers are rewarded with trophies and prizes.

Rutgers Alumni Talk Remodeling

Alumni of Delta Chapter met in November with Fred Kieser, Council Representative and Grand Gamma, to discuss ways of remodeling the Chapter House.

A second meeting was held in December, reports Kieser, and further progress is expected. William L. Doyle is president of the Delta of Chi Phi Association and is superintending the planning.

CHAPTER NOTES

Beta

Massachusetts Institute of Technology

Some members of the Beta Chapter have gotten involved in numerous research and engineering activities through programs at MIT which are designed to give undergraduates hands-on experience in their field of study.

Jose L. Fernandez '79, has worked in the Department of Muscle Research at the Boston Biomedical Research Institute. His project started as an attempt to purify and characterize the calcium-independent (basal) ATPase, an enzyme found in muscle and believed to be related to calcium transport across the cell membrane.

Evidence suggested that the Ca^{++} dependent and "basal" ATPases were in fact two different enzymes and that the latter was probably a mitochondrial contaminant. The work will result in a publication and will also be presented at the Annual Convention of the Biophysical Society in Atlanta next February.

Joel Tilienkamp '80, worked for The Delco Electronics division of General Motors in the area of automobile electronics. He worked with a team designing a mini-computer-based testing system to be used for production testing of the pollution control system to be introduced in cars of the latter half of model year 1979. This work was part of a General Motors Scholarship program.

Mark Phillips '79, has done several electronic design projects for Harvard Medical School. These include automatic feeding monitor systems for monkey cages and horse movement measuring devices in studying the accuracy of predicting a horse-race winner.

Rick Kocinski '80, is presently researching the feasibility of space solar-power stations with the Aero/Astro Department, while Robert Towry '80 is developing a computer simulation of railroad traffic flow.

Doug Klapper '81, has finished a pollution control study for the Chemical Engineering Department and is now researching (at Harvard Medical School) more effective methods of administering drugs into the human body.

The variety of projects that members of the Beta Chapter are involved in reflect a wide range of interests among the brothers. We try to encourage participation in such projects since the experience can be challenging and the student learns to handle responsibilities and get a broader, more practical education.

Jose Fernandez

Gamma

Emory University

Two Town House (or Penthouse) style rooms, with spiral staircases connecting lower and

higher parts are features of Gamma's new house which is due to be completed in May.

Since the fire at Christmas 1977, Gamma has been living in the Carr Estate residence, located approximately half a mile from the Emory campus.

Other features include a theater-style television room with facilities for the new large-screen television, a library with fireplace, and a computer terminal linked to the University computer system, plus a large patio-barbecue area and provisions for a future sun deck.

The old structure's classic southern plantation appearance, complete with white columns and posts, is being retained, but the interior was completely redesigned for greater efficiency and practicality.

Jonathan Reeder, Zeta

Eta

University of Georgia

Eta has enjoyed another prosperous year, celebrating its 111th anniversary on the University of Georgia campus. The chapter's membership remains strong and now has added 22 fine pledges.

The Brothers are maintaining the house well and participating in many campus activities.

New doors were installed throughout the house last summer, while new carpet was put downstairs. There is a new slate floor in the foyer and new furniture in the living room. For the second straight year Eta won its division in the University of Georgia's Leukemia drive, raising over \$2,000.

The chapter is strong athletically in the fraternity sports league. The powerful soccer team was devastating, easily winning the championship and will again be tough this year. The basketball team played well all year, finished as the league's runner-up, and went on to win the Chi Phi basketball tournament for the second straight year. Brother Hatch was named the Most Valuable Player in the tournament each of the past two years.

Brother Ed Guthrie is on the University of Georgia football team, while recent alumnus Bucky Dilts punts for the Denver Broncos. Several Brothers are on the University's rugby team.

Eta chapter members are active on campus, with brothers on the Dean's list, Biftad, Phi Eta Sigma scholarship society, Phi Kappa Literary society, *The Red and Black*, WUOG, and Naval ROTC. The chapter recently awarded its first Rob Norman award, which is given to the senior who has contributed the most to the chapter, to Gary Blum.

Many social events occurred at the chapter house this past year and on the annual Chakett trip. Chakett was taken last Spring on the Florida beaches and was well attended. Eta is having another fine year and congratulates Brothers Brad Scott and Bo Spalding on their recent marriages.

Theta

Rensselaer Polytechnic Institute

With continued alumni support and a highly motivated active chapter, the Chi Phi House will be around for a long time to come.

One of the more rewarding aspects of the alumni weekend last Spring was the extraordinary turnout by recent alumni, who made up close to 70% of those attending.

"My thanks to all of you who have given your support to our past efforts; to those of you who came for our 100th anniversary weekend; and in anticipation to all of you who will continue to support the house with annual contributions in the years to come, as well as attending future alumni weekend functions," writes Bob Bardagy Th61 to alumni.

This is just a starting point—and whenever you're in Troy, stop in at 15th & Sage to

Continued on Next Page

Club Tamerlane Is Alabama's Association

Alabama's year-old alumni association enlisted nearly 100 members last year, and hopes for double that number this year, reports David Breland, president.

"Efforts to more closely unite the alumni and actives of Tau at Alabama and Mu Delta at Auburn must be made so that a truly statewide Chi Phi Association will become a reality," he writes.

Special recognition to the "Golden 50s Club"—Chi Phis who have worn the badge for 50 years or longer (plus a few who cheated a year or two) was made at Tau's 58th Anniversary celebration:

John W. Shealy '29, Greenville, S.C.; Bagby L. Hall '29, Jackson, Miss.; C. Jack Coley '25, Alexander City, Ala.; Tom D. Russell '25, Alexander City; William B. Arbuthnot '30, Marion, Ala.;

Charles R. Estes '32, Birmingham, Ala.; Woolsey Finnell '28, Huntsville, Ala.; Donald G. Porch '36, Tuscaloosa, Ala.; Leslie Dee '32, Tuscaloosa; Joe H. Robinson '26, Alexander City;

Gus B. Thames '33, Mobile; Gordon Miller '30, Tuscaloosa; Leo Mitchiner '31, Mobile; Vernon Leftwich '28, Santa Rosa, Calif.; Clemson Duckworth '28, Tuscaloosa.

Chi Phi Actives Help Themselves

alumni for their donations. I thank Chi Phi for many great memories.

I will be sure to remember Chi Phi once I am financially stable as an alumnus. Again, I thank you for your consideration.

The Best News in Some Time Is Alpha Delta Comment

Believe me, the news of the scholarship is the best I've heard in some time.

I will be starting work with Texas Instruments July 12th and this money will provide me with good security knowing that I will not have to utilize much of my initial pay towards repaying the debts to the school.

As I said in an earlier letter, Chi Phi has done so much for me and I hope this

great organization can continue to serve students at the chapters throughout the nation.

\$300 to PIK Senior Helped Him Complete Sr. Year

I want to express my deep appreciation to you and the other members of the Chi Phi Educational Trust for the \$300 grant I was awarded at the end of last year.

The money helped myself and my parents in meeting the bills for my education for my senior year. They are as grateful as I am.

As you requested I have informed the other brothers here at Rho Iota Kappa that the Trust does have money available. I have informed them how and where to apply. Again thank you very

much for the grant—it was greatly needed and greatly appreciated.

Strong Alumni Help Appreciated by BZ Active

Received scholarship check from Chi Phi Educational Trust September 19, 1978. The help this scholarship will give me in completing my education is very much appreciated. Having been in the fraternity for three years now, I have certainly learned the importance and help that a strong alumni association gives to a growing fraternity.

Loans, Scholarships: Trust Offers Them

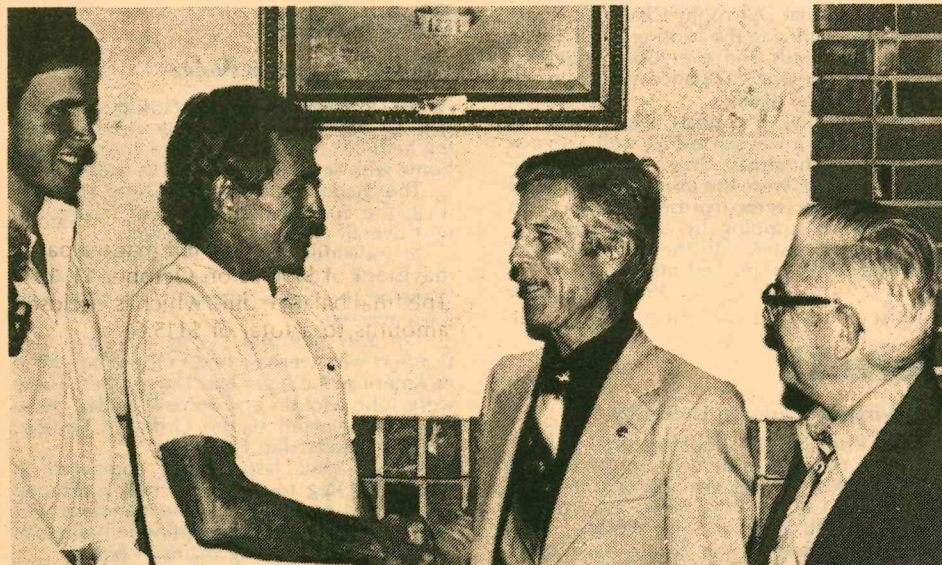
The Chi Phi Educational Trust has funds available for loans and for scholarships to deserving Chi Phis—but don't apply unless you are really deserving and expect to pay back your loan.

Loans are designed to help a student stay in school when his normal means of financing are reduced. They are made at interest, and with specific repayment provisos. The Educational Trust expects to be repaid and makes strong efforts if necessary—after all, a loan not repaid means a loan unavailable to another student later.

Scholarships may be given when an educational purpose is to be served. As with all scholarships, a good grade point average is an important but not overriding consideration.

In the case of both Loans and Scholarships, positive recommendations are required from both Chapter and Alumni. For further information, contact Carl J. Gladfelter, Consultant, Chi Phi Educational Trust, care of the national office in Atlanta.

Alumni wishing to make donations to the Trust to be used for scholarship or loans may so designate their donations. Please write for information.



The Trust is receiving \$5000 from Ralph J. Bisz for loans and scholarships at Theta Delta, in memory of his son, Ralph Campion Bisz, missing in action for 10 years in Viet Nam. Grand Alpha McCall greets Bisz after his initiation, as ThD Alpha Jerry Senne, left, and Al Cody ThD 36, right, look on.

Chi Phis in Higher Education—I Philip Keys Yonge, H 1871

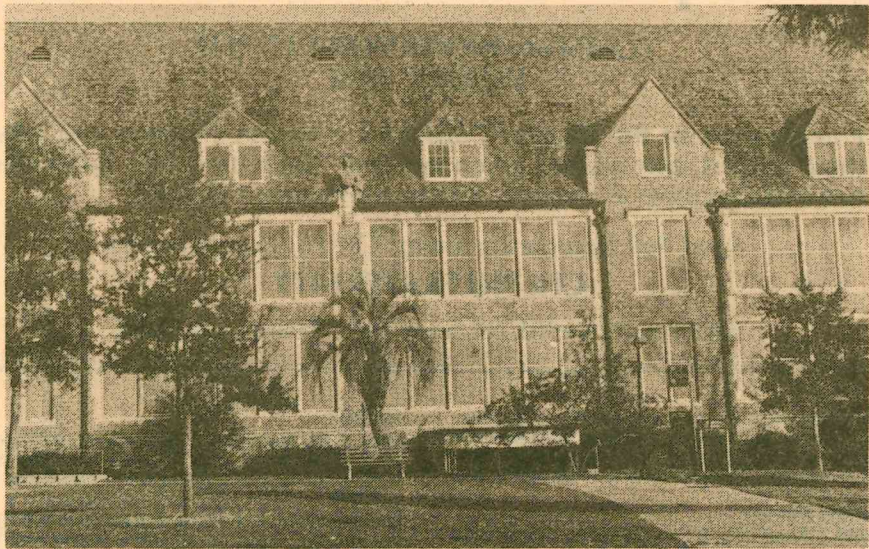


Photo: Dr. Frank W. Mead

P. K. Yonge Laboratory School, U. of Florida

In 1905, Florida consolidated its colleges into three: University of Florida, Florida State, and Florida A. & M. College for Negroes. All were administered by the Board of Control (now the Board of Regents) and Philip Keys Yonge was an original appointee. He served until 1933, except for one 4-year period.

Born in Marianna, Fla., Yonge earned an A. B. at Georgia in 1871, and an A.M. and LL.B. in 1872, and there joined Chi Phi. After graduation, he became a resident of Pensacola, active in many civic endeavors. He was a Phi Beta Kappa at Georgia, and an honorary Phi Kappa Phi at Florida—which also gave him an honorary LL. D. degree during the period he was not in office.

Cooperation and practical common sense guided his actions, according to the Florida Historical Quarterly. He served 1905-1917, and 1921-1933, when he retired at age 83, dying one year later.

Significant of Dr. Yonge's career was the fact that he attended 336 of 340 Board of Control meetings during his long tenure, although its meetings were held several hundred miles from Pensacola, normally either in Tallahassee (225 miles) or Gainesville (385 miles).

Information about Dr. Yonge was gathered for The Chakett by Dr. Howard Weems G 48 ThD 48, entomologist with the Florida Department of Agriculture Plant Industry Technical Division, and currently advisor for Theta Delta chapter.

Dozens of college buildings throughout America are named after Chi Phis. The Chakett needs to know where they are, with pictures and biographical information.

Ohio State's New Coach Iota Chi Phi

Earl Bruce I 53 is the new coach at Ohio State University, his alma mater.

An All-State back in Maryland in 1948, he entered OSU in 1949, joining Chi Phi. Injuries reduced his opportunities to play football there, although he was prominent as a Freshman player.

PsiD Golf Tourney Will Be March 31

The 2nd Annual Chi Phi Golf Tournament sponsored by Psi Delta Chapter at the University of North Carolina at Charlotte, will be a one-day affair with tee-off time at 10 a.m. on Saturday, March 31, with a super party scheduled that night. All chapters are invited.

Minimum entry is a 2-man team from a chapter, and two teams can be sent if desired. Trophies will be given on total scores. For information and reservations: Chris Hodges, 4024 Folkston Dr., Charlotte, NC 28205.

Chi Phi Shows Best Quality Gain

The rating bureau for fraternities shows Chi Phi the most improved in quality among the top 30 national fraternities, ranked by the number of chapters above average on each of their campuses.

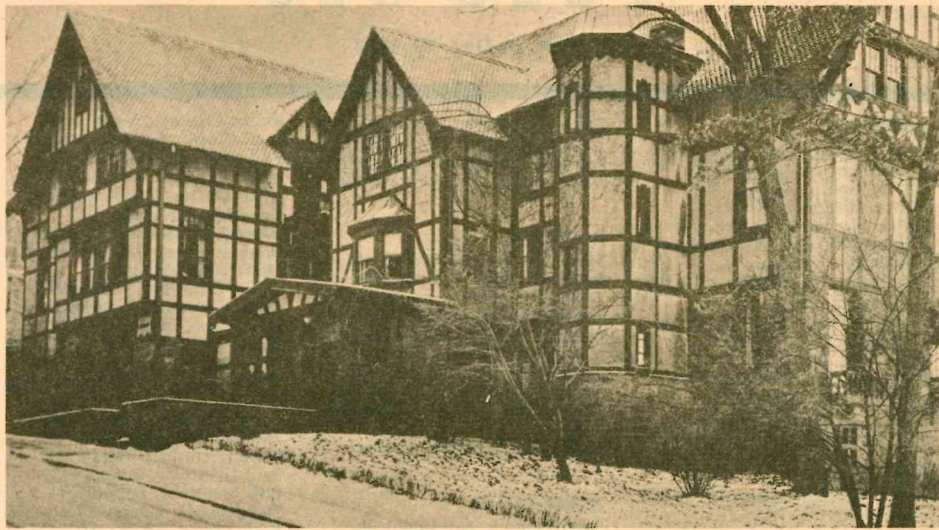
Chi Phi's gain was 8.8% in 1978, with Kappa Alpha Order second with an increase of 8.6%.

College Survey Bureau, Inc., also reports that joining rules are the major "evil" facing fraternities because they force higher costs, snobbery, dishonesty, laziness and less members. Only 10% of fraternity chapters and no sorority chapters are free from forced rush rules.

Northwest, West Are Being Visited

Chi Phi's Executive, Randy Loos, and his assistant, Ed Spangler, are taking advantage of Eastern Air Lines' special 3-week fares for two travelers to visit all of Chi Phi's far west chapters, and also Nebraska, Minnesota, Wisconsin and Northwestern. The trip begins in late February.

Xi Actives, Alums Help!



Xi Chapter's imposing home, Craigielea, at Cornell, was renovated 1970-1973, but since that time an additional \$68,873 was spent on repairs and furnishings, over a quarter of it from Actives and the balance from Alumni.

Craigielea is nearly 90. Writes Edwin J. Fitzpatrick Xi 32, vice president of The Chi Phi Chapter House Association in a "Dear Xi" Newsletter:

"In our major renovation efforts from 1970 through 1973 we shut our eyes to many defects, especially in its nether regions, because at the time we couldn't afford to look!"

Much of the chapter's contribution is through \$350 a month set aside during each college year.

Big Ticket Items Come Yearly

The largest expenditures during the past four years were:

\$16,750 spent for kitchen renovation in 1974, including replacement of range, refrigerator, compressor and disposal, and rebuilding of the dish washer.

In 1975, the main boiler was replaced at a cost of nearly \$21,000, and standby power for sprinkler and boiler system, plus other fire protection measures, added another \$11,000 plus.

In 1976, a retaining wall was replaced for \$18,700. In 1977, a concrete wall replaced crumbling masonry on the cellar stairway for \$3600, and in 1978 \$1500 went toward installation of permanent plastic double-paning in library, dining room and living room and foyer windows.

Actives Live Economically

In addition to the money, Xi chapter Actives have expended thousands of man-hours to hold down the cost of many improvements, and also:

Xi members live simply and economically. They have a first-rate cook who prepares lunch and dinner daily except Sunday; he is their only employee. The members do their own housework, wait on table, wash dishes, scrub pots and tend the lawn.

The chapter has taken the selection of its officers quite seriously and, almost without exception, has elected compe-

tent and energetic Alphas, treasurers, stewards and house managers.

Insurance Costs Reduced

Insuring Craigielea cost \$3000 in 1971; if its structure were unchanged, this cost today would be doubled.

Installing a sprinkler system reduced our insurance costs to \$1150 in 1972. And there were other cost reductions when the University took title to Craigielea. For improved coverages during the 1977-78 college year, we paid \$445.

The University's Bursar collects Xi's room-and-board bills with virtually 100% effectiveness. Unpaid bills have simply disappeared as a factor in Xi's finances.

Alumni Dollars Dependable

Generous, dependable financial support by Xi's alumni has allowed your Chapter House Association to renovate and to maintain Craigielea on a pay-as-you-go

As a consequence, the burden of annual debt service carried by Xi Chapter is exactly zero. Several other fraternities at Cornell must meet debt service obligations in the order of \$3000 to \$12,000 per year.

Intangible but important: the deep interest and consistent support of Xi alumni has had and is continuing to have an affirmative impact on the undergraduate members' attitudes toward Chi Phi at Cornell.

Cornell's Strong Combination

The active chapter is entitled to some quiet pride in having contributed 28.1% of the costs of Craigielea's improvements of the past five years.

But the other side of this coin is that 71.9% of those improvements wouldn't have happened if Xi alumni hadn't provided the means!

It is a fact of life, concludes Fitzpatrick, that our much-loved Craigielea, now age 88, will always require more tender care than a similar cubage of new steel and concrete. The undergraduates have contributed lots of dollars and elbow grease—but they still badly need our financial help.

1978-79 Grand Council, from left: Grand Theta Jim Wolf AD 79, Grand Alpha Darryl McCall ThD 50, Grand Eta Ed Wayson PsD 72, Grand Delta Ed Rogan K 65, Grand Zeta Steve Schneiderwind AThX 73, Grand Iota Steve Cooke SD 80, Grand Gamma Fred Kieser Th 62, Grand Beta Tom Gehring ID 60, Grand Epsilon Al Warrington ThD 58 was absent when photo was taken.



Council Hears Good Reports on Chapters

Full attendance marked the first Grand Council meeting since the Birmingham Congress, as Council authorized appointment of a new executive, considered urgent financial problems, heard of contacts to establish a possible colony at North Carolina's Appalachian State University, and were updated on possible reaffiliation of the Dartmouth Chapter which withdrew 10 years ago.

It was announced that \$115,000 remains from sale of the Sigma chapter

house at Illinois, and will be preserved to reform that Chapter.

Both National Director Ray Donohue and his Assistant, Ed Spangler, visited at Dartmouth during the Fall and were well-received and well-impressed with the local group which succeeded Chi Chapter.

Extensive Fall travel, with contact made with many chapters, brought generally good reports on chapter strength.

Second Class Postage Paid at Atlanta, Ga. 30326, and Additional Mailing Offices

NOTICE TO PARENTS: When your son leaves college, this paper is sent to your address until we receive his new address. If he is not living at home, please send his current permanent address to: Chi Phi, 3400 Peachtree Rd. NE, Suite 1041, Atlanta, Ga. 30326.

POSTMASTER: Please send form 3579 for undeliverable copies to Chi Phi Fraternity, 3400 Peachtree Road, N.E. Suite 1041, Atlanta, Georgia 30326

THE CHAKETT
CHI PHI

VOLUME 64, NUMBER 1
FEBRUARY 1979