

Gamma Zeta Chartered at Wilmington

A simple dignified ceremony marked the chartering of Chi Phi's newest chapter—Gamma Zeta—at the University of North Carolina at Wilmington on April 28.

Grand Alpha Darryl McCall ThD '50, G '52, PsiD '69, ID '78, presented the charter to Chapter Alpha Cory Gore GZ '79, as the climax of the chartering banquet, attended by members of the Grand Council, alumni of the young chapter, and representatives of Psi Delta Chapter, UNC Charlotte, which sponsored and assisted the petitioners.

With establishment of Gamma Zeta, North Carolina—where the Southern Order of Chi Phi was founded in 1858 at the University of North Carolina, Chapel Hill—becomes the sixth state to have three or more Chi Phi chapters.

A party at Gamma Zeta's newly acquired chapter house was held in the evening. Located on Market Street some miles from the beautiful new campus of UNC-W, the house has a capacity of nine men with ample social rooms, kitchen and dining area, and is the best located of the University's fraternities, since zoning restrictions limit fraternity houses in the vicinity of the school itself.

Honorary members of the new chapter, so elected by the chapter for their assistance in its progress from local to colony to chapter, are: McCall, Gene Ehmann ThD '78, Council Representative for the three Carolina chapters, Mike Miller PsiD '79, David Campbell PsiD '79, and Dick Garrett PsiD '78.

Grand Alpha Writes to All Brothers

To All the Brothers of Chi Phi:

This is to advise all Chi Phis that it is my intention not to serve the 1979-81 term as Grand Alpha to which I was elected by the delegates at the Birmingham Congress.

I had a prosthetic heart valve implantation by open heart surgery in November 1974, which a good many of you may not have known, and have had periodically since recurrences of heart problems. Now, additional physical difficulties have surfaced. Increasing professional demands at the University of North Carolina at Charlotte coupled with my declining health, have led to my decision to relinquish the office at the end of my present term. The demands of the Grand Alpha's duties are such that more effort and time might be needed in the coming two years than I feel I might be able to offer.

In addition, a number of alumni have expressed concern over the principle of someone serving a third term as Grand Alpha. After consultation with several of the members of the Council, even though it is a contradiction of the wishes and vote of the delegates to the Congress, and even though I regret the course of events, I do not wish to have any division over the principle which might hamper the efforts of the Council to continue its progressive leadership of the Fraternity, or to collect the funds necessary to run the Fraternity.

Even though I must be restricted now in my physical activity, I still look forward to working with the fine brothers at the Psi Delta Chapter at UNCC to help it continue its extraordinary history of accomplishments, and I hope to enjoy the good company of the brothers at Charlotte, Chapel Hill, and Wilmington as time and chance permits.

I look back at these past four years aware of the accomplishments of the Council in attempting to bring the Fraternity out of inertia by tackling head-on some of the problems created by past circumstances. And I look back with happiness at having had the opportunity to have met from among those with whom I have had contact some men of great character and integrity, and an understanding of what is meant by brotherhood.

Darryl McCall, Grand Alpha

Integrity Radiated from Him, Said of U.S. Steel's Hood, Sigma

President of U. S. Steel until his retirement in 1959, Clifford F. Hood S 15, one of the nation's great industrialists, and a humanitarian, Christian leader, and patriot as well, has joined the Chapter Eternal.

Born on a farm near Monmouth, Ill., in 1894, Hood started work at 10 as a waterboy for a threshing crew at 50¢ a day. An electrical engineer working in the area influenced him to go to Illinois, where he received a degree in that field in 1915.

As U. S. Steel's head, Hood termed his "greatest achievement" the development of a 9.9% net profit after taxes in 1957 by building an "enthusiastic team working toward a definite objective which they helped to formulate to return an adequate profit after taxes for services rendered."

His advice to youth is succinct:

"No one else can tell you what you



Clifford F. Hood, President U.S. Steel Chapter Eternal

can do or should do. You, yourself, are the best judge. The important thing is to set your goal, chart your course, then do the best you can. It's important, too, to be willing to admit it if you make an honest mistake."

"Energy, intelligence, warmth of understanding, but above all integrity radiated from him in an infectious way," says one of his younger business associates. "I can say I have never known anyone who has been more effective in inspiring younger men than Cliff Hood."

THE
CHI
PHI

Our 155th Year—Founded 1824
CHAKETT

MAY 1979

Omega Host for 1979; Kappa May Re-Invite Congress to Madison Later

Atlanta Site of 1979 Congress at Tech

Over 1600 Have Paid Alumni Dues

The total of alumni paying voluntary dues to National rose by 355 during the first quarter of 1979, making the total to date for the fiscal year 1609.

On page 7 is the listing of 355 whose contributions were made last quarter.

Givers at the "Scarlet" level (\$250 and up) and the "Blue" level (\$100-249) rose from 43 to 58.

119 Gamma alumni constitute the largest chapter group paying dues, but Alpha-Tau still leads among those who gave at the higher levels with nine. Gamma is second in such gifts (six), and Omega and Theta Delta have five each.

Scarlet givers not listed earlier:

Xi (Cornell)—Joe Rice Dockery '28.

Omega (Georgia Tech)—Milton W. Arnold '28.

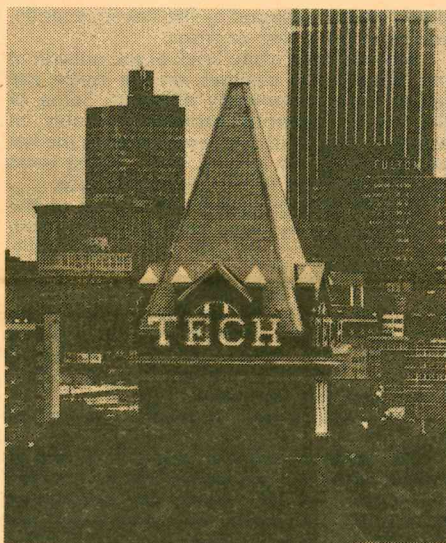
Psi Delta (UNC Charlotte)—Edward O. Wayson, Jr. '72.

Additional "Blue" givers are:

Gamma (Emory)—J. Baxter Gentry, Sr. '27; Crawford Rainwater '37. **Eta** (Georgia)—James P. Parker '71. **Lambda** (California)—Richard C. Ham '33. **Rho** (Lafayette)—John H. Dillon II '63.

Omega (Georgia Tech)—William C. Ranck '61. **Alpha-Tau** (Michigan)—Albert M. Post '31. **Eta Delta** (Southern California)—Harry B. George, Jr. '16; E. Russell Werdin '29. **Theta Delta** (Florida)—Alfred C. Warrington IV '58. **Sigma Delta** (Cal Davis)—Kristian D. Whitten '70 L'70.

Inactive Chapters—**Zeta Delta** (Connecticut)—Paul J. Novak '58 B'58.



Chi Phi Needs New Field Man

Young man wanted! Ed Spangler AD 77 will end his "tour" as Chapter Consultant this year, and his successor should be at work in July to help prepare for the 1979 Congress, announces Randy Loos, Chi Phi's Executive Secretary.

Chapter consultants travel a great deal during their 2-year employment, visiting most of the fraternity's chapters each year, and providing assistance to chapters with problems. Alumni contacts are also stressed.

Applications are solicited from Chi Phi who will graduate in June 1979.

"It is my opinion that this job offers a graduate an unexcelled opportunity to develop his ability to meet and work with a very wide variety of persons of all ages," says Loos.

Excerpts from the official job description follow:

The Chapter Consultant conducts scheduled visits to chapters, servicing chapter officers and members in evaluating their duties, analyzing current problems and developing remedies applicable to that chapter. He acts also as liaison officer with campus officers, interfraternity officers and alumni.

Detailed reports of these visitations are submitted to the National Office on each chapter visited, with copies to key alumni and to the chapter itself.

The Consultant also assists in planning of Regional Conferences, Leadership Labs, Chapter Installations, Congress, etc.

Chi Phi's Trust
Pages 3-4-5

Chi Phi's 1979 Congress will be held in Atlanta Aug. 15-19—with Omega Chapter at Georgia Tech as the host—instead of in Madison, Wis., as previously planned, due to lower travel costs. A beautiful and exciting city, Atlanta is a good substitute.

Since Grand Alpha Darryl McCall has announced his intention not to serve the term starting at this year's Congress to which he was elected at Birmingham a year ago, election of a new Grand Alpha will be a major order of business. (See his Letter opposite.)

Kappa Chapter voted not to hold the Congress for the overall benefit of the fraternity, but may submit a bid for Congress in 1980 or later.

While Omega will be the host, the Georgia Chi Phi Alumni Association and the other Atlanta chapters have assisted in the transfer.

Schedule is not complete, but the Krannert Leadership School will be Wednesday and Thursday, with Congress sessions Friday, Saturday and Sunday, in all probability.

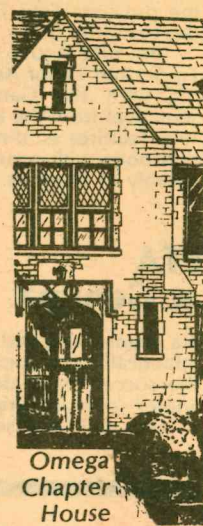
Big League Baseball is scheduled for Thursday night, when the Braves are playing at home, and Saturday night will be the Congressional Banquet.

Alumni are invited to attend any, or all, of the sessions, and will particularly enjoy the social events.

Omega 75 Years Old

Congress sessions will be held on the Georgia Tech campus, and actives will be

Continued on Back Page



Congress Information

Schedules and other details for the Atlanta Congress will be mailed to all alumni on request, as well as automatically to all chapters and alumni associations.

Simply write the National Office: Chi Phi Fraternity, 3400 Peachtree Rd NE, Suite 1041, Atlanta, Ga. 30326.

Georgia has the largest population of Chi Phis in the country, with alumni of most chapters located in the metropolitan Atlanta area. Phone the Council office for Congress information: 404/231-1824.

Undergrads Heard On Council

Of the nine men who make up the Grand Council, two are undergraduates. While the Grand Theta and the Grand Iota (the undergraduate members of Council) have full voting rights, from time to time the question arises whether the undergraduates can really be effective.

"I think the Grand Theta and Grand Iota have an impact on the decisions which are reached," says Stephen Cooke SD 80, the current Grand Iota. "On some issues a consensus exists; on others the discussion is quite frank and open and I think the Council members listen to each other."

A rapport often develops among Council members due to the long hours they spend in meetings and during social events afterwards, Cooke notes. This relationship enables the Council members to brainstorm and discuss ideas informally, regardless of age or position on the Council.

When asked about a young vs. old split on the Council, Cooke doesn't think such a thing as a "generation gap" exists, as each member of the Grand Council has the good of the entire fraternity in mind.

Undergraduate Council members should be prepared to become actively involved in every aspect of the Fraternity, stresses Cooke.

"While it requires time and dedication to remain knowledgeable about Fraternity affairs, it is also a tremendously valuable experience, and one which I will remember my entire life."

CHAPTER NOTES

GAMMA at Emory

Gamma Chapter would like to report that construction on our new Tom Connally Hall is progressing quite rapidly. The four-story structure, costing over \$1 million, will replace the previous Tom Connally Hall which was destroyed by fire.

The new house was designed by Tippet, Tippet and Taylor Associates of Atlanta working with the Gamma Trust and representatives from the active chapter. It includes such features as: dining facilities for 100, and bedrooms with connecting baths for approximately 41 brothers.

Jonathan Reeder, Zeta

ETA at Georgia

Eta chapter enjoyed an active winter quarter athletically and socially. The basketball and the soccer teams dominated the intramural winter sports programs.

Eta's basketball squad led by seniors David

THE CHI PHI CHAKETT

(USPS 103-380)

VOLUME 64, NUMBER 2
MAY 1979

Randolph M. Loos, Executive Secretary
Robert S. "Bob" Cody, Editor

The Chi Phi Chakett is published in October, December, February and May by the Chi Phi Fraternity, 3400 Peachtree Rd., N.E. Suite 1041, Atlanta, Georgia 30326. Second class postage paid at Atlanta GA and at additional mailing office. Subscription rate \$5.00 per year. Single copies \$1.50.

TELEPHONE 404/231-1824

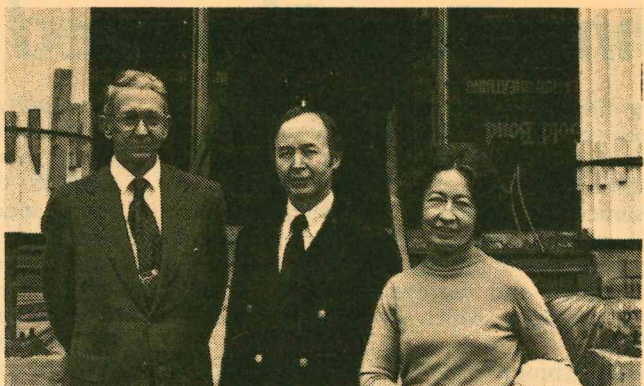
Chakett Deadlines

Sept. 1—October Issue (mail Oct. 1)
Oct. 15—December Issue (mail Dec. 1)
Dec. 15—February Issue (mail Feb. 1)
March 15—May Issue (mail May 1)
After Deadline News—305/847-4781

All Chapters: Chapter Notes Needed!

Translation: Greek to English

A	Alpha	N	Nu
B	Beta	Ξ	Xi
Γ	Gamma	Ο	Omicron
Δ	Delta	Π	Pi
E	Epsilon	Ρ	Rho
Z	Zeta	Σ	Sigma
H	Eta	Τ	Tau
Θ	Theta	Υ	Upsilon
I	Iota	Φ	Phi
K	Kappa	Χ	Chi
L	Lambda	Ψ	Psi
M	Mu	Ω	Ome Omega



Connallys See New Emory House

New Tom Connally Hall is visited by his children. From left, Bates Block G '40, with Tom Connally Jr. O '49 and Sally Connally Hardie. Note the traditional columns.

Hatch, Tommy Withers, and Senour Reed have posted a 5-0 record. The soccer team also has a 5-0 record and is coached by John Chapman.

The annual Mardi Gras festivity was held on Saturday February 17. A large crowd congregated in the basement to enjoy much wine and a good band. Many brothers and their dates were dressed in interesting and innovative costumes.

A snow storm hit the campus that same evening and many people were left snow-bound. Classes were not held the following Monday at the University. This was the second bad winter storm to hit Athens in February.

The brothers are looking forward to several upcoming socials and to the annual Chakett beach trip, which will take place in May at Destin, Florida.

Frampton Ellis Simons, Zeta

THETA at Rensselaer

Help through contributions is still needed by Theta to continue house improvements.

The chapter is now third in Barker Trophy, second in scholastic rating of fraternities, and pledged 16 men, as well as having the usual large number of men in various sports.

Robert A. Bardagjy

MU at Stevens Tech

If you haven't stopped by the house recently, you're in for a few surprises.

Although the white brick of the outside of the house never changes, on the inside, the house looks completely different. Some of the most ambitious projects probably in house history have been completed in the last two years. Hardly a room in the house even barely resembles its former appearance.

Besides the complete remodeling of the rooms, fire doors were put in, the party room was remodeled, and all walls were wall-papered or painted.

Most important, however, is the people who make up this house. Chi Phi has always been made up of a wide mix of personalities, interests, and backgrounds. This hasn't changed, but the combination right now works together very well.

The house is now full for the first time in three years.

The brotherhood is an energetic group of individuals who maintain a 2.8 cum, are currently third in IFC sports, are known for having the best parties on campus, and are probably the tightest group on campus. The brotherhood functions as a unit, whether on a movie run to NYC (Animal House), impromptu partying or group poop sessions. No wonder we attracted 22 pledges this year.

OMEGA at Georgia Tech

Two major functions are being held by Omega during the Spring Quarter, with an Alumni-Parents steak dinner on April 14, and the annual Shrimp and Beer Party for alumni tentatively slated for May 19. An issue of Omegaron will be coming out in May with additional chapter news.

Winter Quarter saw initiation of pledges and Little Sisters—always a big occasion. The ranks of the fraternity were expanded to include 11 new men and nine Little Sisters. With the addition of three new pledges, it looks like Chi Phi will continue its upward trend.

This year's formal was held at Stone Mountain Inn: it included a banquet before the band party where Master of Ceremonies Steve Hipsman kept everyone amused as he handed out awards. Special notice should be given to bartenders Sam Harris and Jack Breshnahan who kept everyone in the right mood to party all night long. Housemother Mary Brooks was also entertaining throughout the evening while displaying her graceful dancing form.

The basketball team went to the playoffs for the first time in recent history. In the Southeastern Chi Phi Basketball Tournament they didn't fare as well, but the team looks

forward to next year for revenge. Prospects for next season look encouraging as all five starters and nine out of the first ten players return.

The soccer team under the direction of Jack "the snake" Stevens had another winning season and barely missed the playoffs.

James Dixon, Zeta

ALPHA-TAU at Michigan

With the initiation of five new men at the beginning of this term, Chi Phi at the University of Michigan is now a strong brotherhood of approximately 45 members. After the initiation of the 13 men of this term's pledge class, we will have nearly 60 active members, by far the largest membership at Alpha-Tau since the late 1960s.

During the week of March 19, the brothers participated in a pole-sitting marathon to raise money for Muscular Dystrophy—a successful event both in terms of the money raised to fight MD and in terms of the enjoyment of the event by the brothers.

Chi Phi continues to be one of the most active houses on campus in IM sports. After finishing 12th last term, we set out this term to break into the top ten fraternities in IM sports for the first time in many years.

Mikey Butler, Zeta

ALPHA-CHI at Ohio Wesleyan

To our Alpha-Chi Brothers, the house extends a warm and friendly invitation to visit the house and come up and meet your new and future Brothers of Alpha-Chi.

Come up and see what Brother Wyford Jones and John Brown have been doing for the house.

The improvements of the Library done by Brother Wyford include chairs, a table, and a desk made especially by a local cabinet maker, plus the new furniture acquired from the Williams' Estate. We received an extensive amount of limited volume edition books which were given to Wyford by one of his friends.

Also, the improvements in the newly named Harris Memorial Parlor Room. If that isn't enough to get you out here, then for those Brothers who haven't been back since '69; the year of the renovation of the house, come out and see what physical changes the house took. Compare it to when you were a Chi Phi to how it stands today.

Due to a large graduating senior class last spring, we are down to 17 actives living in the house. Therefore, a strong emphasis this fall was on rush. Through the superb efforts of our rush parties and memorable off-campus night parties, we obtained 12 hard-working pledges.

Over the past year, Chi Phi has actively participated in intramural sports and has fielded several highly competitive teams.

Last year's volleyball team posted a 4-1 record, losing only the final game of the season to the eventual volleyball champions.

Chi Phi's basketball team combined talents to achieve an impressive 5-1 season record. The team's only loss came in a heart-breaking overtime defeat by the score of 52-50, in the absence of three starting team members.

ALPHA DELTA at Penn State

In conjunction with Andy Schultz and Jack Vincent and with the financial support of the House Association, we have ordered beautiful copper rugs for the main club-rooms. The old carpeting will be used to carpet upstairs hallways and perhaps the library. One "chilling" problem that we have is the plight of our poor old ice machine. She just can't seem to keep her cool anymore.

We again sponsored Muscular Dystrophy Balloon Days in April. The fund raiser went well last year, and we received \$166 from the

Trust for our efforts. The check will naturally go toward house improvements. We will be reaching for the sky this spring as we will try to double our prize money—an added incentive.

During this term, we have only 35 out of a house capacity of 43 brothers. They are paying house bills of \$470 and social fees of \$65. Although this may sound expensive, it is competitive among other fine houses. We are, however, on a fairly strict budget because of increasing expenses.

The social scene at the kingdom this winter term has been wild and crazy. The calendar started off in high gear with a party at Pi Kappa Phi with Disco Don. The following weekend was highlighted by a social with the Pi Beta Phi's, the "Evil Women," and a party at Phi Psi. The week before Christmas vacation began with a Little Sister tree decorating party.

Winter term rush as usual is very hectic. The number of preferred rush is high and some real fine prospects have been noticed. As of the sixth week, we have five bids out and four acceptees for spring.

EPSILON DELTA at Oregon State

Epsilon Delta started the new term off right, with a new cook, great food and a very livable food budget prepared by the Zeta.

It has been said that an army travels on its stomach, and we now know that Chi Phi does too. With our new cook, morale has skyrocketed.

A new fire detection and sprinkler system was installed this term, with many members pitching in to help, with financial backing from our great alumni.

Epsilon Delta's basketball team is undefeated in its league and hopes to repeat last year's league championship, as one of the brothers was selected to play on the university All-Star team.

The newly formed Parents' Club has thrown full support behind the chapter, and this summer will see much of the house remodeled and renovated. The new executive council is enthusiastic, reflecting the mood of the house, as we are preparing for our annual all-campus MD benefit breakfast.

We're looking forward to a good finish to this year and a great start next year at keeping Chi Phi and the meaning of brotherhood strong at Oregon State.

Jerry Hansen, Beta

ETA DELTA at Southern Cal

Our chapter is on the upswing in terms of membership, pledges, social activities, athletics, and academics. Things have run smoothly this term.

But, the most promising aspect of our chapter this year is the new feeling of true brotherhood. It is more apparent now than at any time during my four years in the fraternity.

Through the efforts of the brothers of Eta Delta during the fall of 1978, 15 pledges went through the pledge program. Each pledge has performed well during the term.

The combined efforts of the brothers was the key to the pledge performance, but it is the determination of the pledge class as a whole which completes the formula.

14 pledges took the pledge final exam which consisted of national and local information on Chi Phi. All passed the exam with scores ranging from 95% to 76%. The one pledge will be held over as a "pocket pledge" and will hopefully initiate in the spring term.

We had a great fall Little Sister Rush this semester which brought us some very beautiful and dedicated girls.

The Mothers' Club came through again this semester by donating two new vacuum cleaners to the house and giving us a new toaster for Christmas.

The alumni interest and attendance has been excellent.

We had seven main social functions triggered off by the Basement Stripper Party and coming to a close with the Scarlet & Blue Ball. The Scarlet & Blue Ball was a truly great finale to an exceptionally successful social semester. We had a fine fall athletically.

The season opened with the interfraternity bowling competition. The Chi Phi team of Steve Broadbent, Erik Pfanku, Al Cabraloff, Djabs, and Bob Nicoletti took the first place prize as pledge Nicoletti captured high series honors.

Once again the Chi Phi's dominated the volleyball team competition and emerged the undisputed champions. In the football playoffs the Chi Phi team fought fierce opponents in triple overtime to lose and settle for a fourth place berth.

Kappa's Average Stays High

Kappa's traditional Red Triangle organization, founded many years ago to foster scholarship, has helped undergrads achieve 10 straight semesters of good averages, under the leadership of Prof. Gerald Kulcinski K 61, Red Triangle president.

On the 4.0 scale, Kappa achieved 3.04 in Spring 1978, and better than 3.0 another semester. Twice in the past 10 semesters it made 2.9, four times 2.8, once 2.7, and once 2.6. Its average for the past five semesters exceeded the all-men's average at Wisconsin.



Lambda Grad Plays Rugby in Europe

Former Cal player, Mark Hoffman L '78, carries the ball in Italy during European tour last Fall. Russia was included for the 55 players.



Sigma Delta 10TH Anniversary

Reserve the evening of Saturday, May 19, for the banquet/reunion to celebrate the 10th Anniversary of the Chartering of the Sigma Delta Chapter. For information, contact Tom Spurgeon (916) 758-3284.

TENNIS CLUB HOTEL
formerly Voyager Inn
Davis, California

THETA DELTA at Florida

Theta Delta experienced an enjoyable and productive winter quarter. Our rush program reaped 15 pledges and we also initiated 24 new brothers, making Theta Delta as strong as ever in spirit as well as size. Theta Delta spirit shone throughout the quarter in various activities. Some of these events include: a first place award in the Delta Gamma sorority sponsored "Anchor Splash," which is a combination swim meet and "Almost Anything Goes", and a first place award to brother Jeff McKee in the Anchor King contest, an event judged by various faculty members.

The Chapter did very well in Greek Week also, placing among the top 5 fraternities on campus. Once again, everyone had fun participating in such events as the beer sipping contest (through a straw) and a 50's dance contest in which brother John Hardesty, and Tri Delta sister Alice Norcraft placed second. Theta Delta was graced yet again by the lovely Natalie Rudivich, a little sister, who was chosen the winner of the Greek Week beauty pageant.

In sports, Chi Phi asserted its dominance by "dribbling" away" with the intramurals Basketball Championship. Hoop!

Theta Delta experienced much joy this past quarter, but also experienced a little sadness when Edith Schmidt, our house mother, left us due to personal reasons.

The future looks bright for Theta Delta. Carlos Lires, ThD '78, is currently a candidate for the office of student body president. Chris Qualmann, ThD '79, has recently been appointed producer of Gator Growl, the largest student produced show in the world! Randy Loos, the present Chi Phi Executive Secretary, is a Theta Delta alumnus. We are all very proud of the accomplishments of these three brothers.

Vic de Moya, Gamma
Delio Figueiras, Zeta

IOTA DELTA at Indiana

A limited report this time around with only a month and a half of activities to comment on.

Our most recent undertaking was with the Alpha Gamma Delta sorority in the annual "I.U. Sing" Broadway style, musical productions contest. This was "Sing's" 50th anniversary, and to commemorate the milestone the Chi Phis and Alpha Gams reached back to the early days of television for their theme, "I.U. Sing, This Is Your Life!"

In front of a capacity auditorium audience, the group performed a monster hit song from each of the past five decades (Blue Moon, Don't Sit Under The Apple Tree, Rock



Four charter members enjoy ID's 20th last Fall. Left, Michigan actives hold party for underprivileged, and below celebrate 2d place float.



Chi Phi's Trust

LIBRARY GRANTS

Several chapters have usable libraries as the result of grants by the Chi Phi Educational Trust during recent years.

Since the Swanson Estate played a major part in the Trust's ability to make these grants, it was appropriate that his own chapter, Alpha-Tau, at Michigan, should receive one of the first grants, and that the Library be named the Herbert O. Swanson Memorial Library. Below is more information and photos about this Library, and also the Libraries of Alpha Delta at Penn State, and Xi Delta at Florida Institute of Technology.

Several other chapters have improved Library facilities:

At North Carolina, a basement storage room next to the dining room—in the house's basement—was converted into a panelled Library with adequate lighting, desks, etc.

Rho Iota Kappa Chapter at Rhode Island also has an improved Library facility due to a Trust grant.

In all cases, student labor was a major factor in making the Trust's limited money stretch, and achieve maximum results.

Alpha-Tau's Library Named for Swanson

The Herman O. Swanson Memorial Library was created in 1976 with funds from the Chi Phi Educational Trust. Since

Xi Delta dedicates library to Arch Updike ThD '43, XiD '79, shown receiving plaque and library key from former National Director Carl Gladfelter A-T'33.



Around The Clock, Yellow Submarine and Stayin' Alive). We took fifth place, one short of a trophy, but finished ahead of 20 other groups in our (top) division... not bad for a bunch of tone-deaf, musically uncultured, rhythmically paraplegic derelicts.

Exchange parties with the Sigma Delta Tau, Alpha Gamma Delta, and Gamma Phi Beta sororities highlight social so far this semester. An eight-man spring pledge class has the house at capacity again. We're fourth in sports now but expect to climb a notch or two with softball, the house specialty, around the corner. And of course, the little sisters are absolutely adorable.

Spring semester means the Little 500 bicycle race the weekend of April 21 where ID was in the thick of the race!

John Warner, Zeta

PHI DELTA at Tennessee

After one of the coldest winters in recent years, the Brothers of the Phi Delta Chapter of the Chi Phi Fraternity have dug out of the snow and slush. The winter quarter had many warm spots, however.

January began with candidate week followed by the initiation of six new Brothers. We are looking for leadership and dedication from these men. Brother Breen has already made his move as he was elected Gamma. Other new Brothers are currently holding committee chairmanships.

On Jan. 20, three young women were initiated into the Sweethearts of the Chakett and following the ceremony, a 50s style dance was held—complete with grease, skirts, and letter sweaters. In February, our annual Valentine's party took place in a formal setting, with the Brothers in coat and tie and the ladies in dresses.

Phi Delta's sports program this quarter seemed to be influenced by the weather—it went cold. Our bright spot was in track, as Chi Phi, led by Brothers Alperi, Schultz, Fosbury, and Morton took the Gamma League Crown. On February 24 and 25, we were once again in Atlanta for the Chi Phi Basketball Tournament.

On March 4, as part of our "better alumni relations program," the actives happily dropped a basketball game to the alumni 50-30.



Alpha-Tau dedicated its remodeled library (above) to Herman Swanson A-T 14, whose bequest to the Trust made it possible. His picture hangs over the fireplace. Picture at right shows active using Alpha Delta's Library, another Trust project.



then, the library has been the most frequently used room in the House.

The library is utilized for its main purpose, but also is a meeting room for Pledge, Executive Council, and Little Sister Meetings, and as a "soft conversation" room during parties.

The money from the Educational Trust was used to refinish, rewire and replaster the old library, and to buy new furniture, carpeting and books. Upon completion of remodeling, the House passed a rule prohibiting food or beverages in the library to preserve its original beauty. This rule is still closely followed by the brothers.

The books purchased for the library include a complete set of The Encyclopaedia Britannica, The Annals of America, an unabridged Webster's Dictionary, and a set of Reader's Digest Condensed Books. The library also contains old yearbooks, logs of minutes from past house meetings, and various textbooks left by generous (or frustrated) brothers.

The library contains our composite, trophies, and skins—all popular targets. Countless sorority women harbor memories of being caught attempting to sneak off the porch or through the window with a composite.

The brothers of the Alpha-Tau Chapter of Chi Phi will always remember Herman O. Swanson; his portrait above the fireplace smiles down upon us, reminding us of the achievements and generosity of one of our chapter's charter members.

Dan Clauw

Alpha Delta Keeps Top Five Average

Alpha Delta's library was built in the Spring of 1978 thanks to a \$1500 grant from the Chi Phi Educational Trust and additional monetary help from the Alpha Delta House Association.

The "card" room adjoining our two major club rooms converted nicely to its new role as library. This involved putting up doors for sound-proofing and building modular shelving, storage space, and carrels to accommodate four brothers right into the walls.

We have since added a conference table due to the large number of brothers who wish to use the facility.

Other additions include a pendulum clock received as a gift from our little sisters, curtains made by the little sisters, and a coffee pot donated from the kitchen for those "all nighters."

In the future, the chapter hopes to add wall-to-wall carpeting and fluorescent lighting.

Alpha Delta is sure that the library has contributed to its consistent scholastic ranking in the top five of all 50 fraternities at Penn State, with just under a 3.0 cumulative average.

Alpha Delta thanks the Educational Trust for not only making the house an easier place in which to study, but also for adding greatly to its appearance.

Jim Wolf AD 79

Xi Delta Dedicates Library to Updike

Xi Delta chapter has dedicated its renovated library to Arch Updike, ThD'43, XiD'79, a long-time backer of the chapter and the fraternity. The extensive interior improvements were made possible by a \$1700 grant from the Chi Phi Educational Trust, and involved dozens of hours of student labor.

When the house was purchased in 1974, the Chi Phi Educational Trust Fund also gave a grant of \$8000 to pay for the library portion of the property, a separate structure with a small kitchen in the front section of the building and a bedroom and bath in the aft. With no study furnishings and poor lighting, the

Continued on Next Page

SPARKS MEDALS

The Sparks Memorial Medals were first awarded in 1925, in honor of Edwin Erle Sparks, who was President Emeritus of Pennsylvania State College at the time of his death in 1924. He was one of the great Chi Phis, and contributed generously of his time and talents to his Fraternity as well as to the world of education. The Trust makes the awards.

This medal is awarded to the man in each chapter who has attained the highest scholastic standing for that year.

1977-78 winners which have been reported to the National Office are as follows:

Gamma—Glenn S. Shealy
Epsilon—William G. Plunkett
Zeta—Paul K. Davis
Eta—Thomas A. Withers
Theta—Robert J. Vill
Iota—Terrence A. Brown
Kappa—Laszlo P. Kaveggia
Mu—Paul H. Floyd
Pi—Robert H. Tennesen
Rho—Vincent R. DePalma
Psi—Francis J. Uricchio

Omega—Gary S. Brush
Alpha-Alpha—James T. Massagee
Alpha-Tau—David M. Hix,
Randall B. Sharpe,
Spencer W. Waller
Alpha-Chi—Bradford Borden,
David S. Seymour
Alpha Delta—James E. Wolf
Epsilon Delta—Douglas J. Barnes
Eta Delta—Steven E. Marcussen
Theta Delta—Richard C. Orr, Jr.
Iota Delta—Russell J. King
Alpha Theta Chi—Michael F. Gentile
Delta Xi—Barry H. Wolfe
Mu Delta—Steven S. Anderson
Xi Delta—E. Michael DuBois
Omicron Delta—Charles A. Howard
Rho Delta—Malcolm E. Page
Sigma Delta—Stephen D. Cooke
Phi Delta—Robert B. Barrett
Psi Delta—Gary H. Mornhineway
Alpha Zeta—James E. Barlow, Jr.
No reports have been received from Alpha, Beta, Delta, Lambda, Xi, Tau, Phi, Gamma Delta, Rho Iota Kappa, Nu Delta, Pi Delta, Chi Delta, or Beta Zeta.

TRUSTEES & GOVERNORS

LIBRARY GRANTS

Continued from Last Page

study area soon became cluttered with dishes and was also used as storage. Now, as a result of the grant, the library is now the most comfortable and quiet place to study there is—on or off the FIT campus.

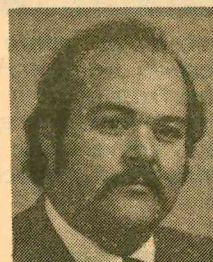
The interior design was drawn up by active John Ferguson who turned it in as a proposal for a class project.

Although many brothers participated in its construction, special mention should go to John Ferguson, Skip Williams, and Steve Hansell whose endless efforts boosted the completion.

At the dedication, Arch Updike was presented with a plaque, which now hangs inside the library, was made an Honorary Member, and given a key, unlocking the door to the facility and opening the door to better learning.

As a result of the opening of the library and its continuous use, nearly half of the brothers' grades improved last quarter. The new atmosphere makes studying less of a chore and will remain a definite plus for the betterment of Chi Phi actives. A published thanks is also valid for all those who helped in our receiving of the grant from the Chi Phi Educational Trust Fund. "Thank you."

Jeffrey D. Charlton



Steinke
Kitchin
Wayson

Jessup
Updike
Gilbert

Five Trustees serving five-year terms—one elected annually—administer the business of the Chi Phi Educational Trust. They are assisted by the Grand Eta as Counsel, and currently by an Assistant Counsel (the past Grand Eta), a Consultant (the former National Director), and the Executive Secretary and National Office staff.

The body which selects the Trustees is known as the Board of Governors with five members elected by Congress for two-year terms, plus two ex-officio members, the Grand Eta and the Grand Alpha. The Governors also have the power to remove all Trustees if assets are being mismanaged.

Alumni with business experience are selected as Trustees, and represent all parts of the nation. Brief information about each of them is listed below, gathered by Ray Donohue Ome '61, former National Director.

Governors currently include: Richard S. Reade, Jr. A-T '33, Clover, S. C.; Dana A. Yarger K '69, Madison, Wis.; Robert G. Grant ID '69—whose terms expire this year—and Wyford D. Jones A-X '34, Delaware, Ohio, and James W. Martin A-X '32, Cincinnati, Ohio, whose terms expire in 1980, plus Edward O. Wayson, Jr., PsiD '72, A-A '72, Edgewater, Md., Grand Eta, and Darryl McCall, ThD '50, G '52, PsiD '70, ID '78, Charlotte, N.C., Grand Alpha, ex-officio. (No biographical information is included due to lack of space.)



Grant
Gladfelter
Martin

Block
Jones
McCall

Not pictured: Reade, Yarger

with the Alpha Home Association. He was appointed to the Trust in 1977.

Richard S. Gilbert P '62 Is Newest Trust Member

His BS in Mechanical Engineering from Lafayette College in 1962, and a Master's in Business Administration from Lehigh in 1973, have led Dick Gilbert to his position on the Division Staff, Electronic Components, Product Management for Western Electronic Co., Reading, Pa.

Outside activities have included extensive Lions Club work, as secretary and president of his own club, and zone chairman of his district. He has been in the Army Reserve for 17 years, is a graduate of the command and General Staff College, and for six years has been the Military Academy's Liaison Officer in Pennsylvania's 6th Congressional District.

Fraternity work with both his college and Chi Phi includes: Past Secretary and Member, Lafayette College Alumni Interfraternity Board, President Rho Chapter Association and current director, plus Grand Zeta, Grand Gamma, and Regional Counselor.

Edward O. Wayson, PsiD '72, Grand Eta, Trust Counsel

A charter member of Psi Delta at UNC Charlotte, Ed Wayson graduated with a BA degree and continued at Howard University to get his JD in 1975.

Currently, he represents the firm of Goldsborough, Franch & Collett at "Wayson's Corners," Maryland, in its branch office there, and manages his own properties. He is active in community affairs in his area.

Carl Gladfelter A-T 33 Is Now Trust Consultant

Three careers, and now semi-retirement, is the record of Carl J. Gladfelter, National Director of Chi Phi, 1960-1974, active, though retired, as Consultant to the Educational Trust, Graduating in 1933, he received an MBA degree at Michigan in 1934.

The first Gladfelter career was a highly successful one in retailing, where he was secretary-treasurer of Rollins Company, Detroit, 1935-1948.

He then became an associate professor in marketing at the University of Connecticut where he remained 1948-1960.

Always active in Chi Phi, he was named to the Grand Council in 1947, serving as Grand Alpha 1953-1957.

Bates Block G 40 H 42 Is Assistant Counsel

A 1940 graduate of Emory who got his law degree at Georgia in 1942 where he served as chapter Alpha, Block's Chi Phi involvement started long before his birth: he wears the fraternity pin first used by an uncle at Eta where he was initiated in 1883, and later by his father who was initiated by Alpha in 1892. Two other uncles were also Eta Chi Phis.

Activities with Gamma Trust, Eta alumni and the Atlanta Chi Phi Alumni Association were continuous after graduation, and he was president of the latter group when the 1953 Congress was held in Atlanta. He became Grand Eta in 1961 (counsel to the Trust), serving until the last Congress, and is now Chi Phi's representative on the National Interfraternity Conference, a member of its board and chairman of its legal committee.

His civic and professional activities are too numerous to list in detail, but he is an active Presbyterian, and active in the bar and many other activities in Atlanta.

IRS & TRUST GIFTS

by Edward O. Wayson, Jr.
Psi D 72, Grand Eta

The Internal Revenue Service permits individuals and corporations to claim deductions from their income for contributions to the Chi Phi Educational Trust, which is a recognized charity. In order to insure that our members, friends and supporters will receive the maximum tax advantages for their greatly appreciated support of the Trust, we would like to provide a brief overview of the principal tax rules which may be helpful in selecting the most appropriate items for donation to the Trust.

Gifts of Property

Deductions are permitted not only for contributions of cash but also for contributions of property. A deduction generally is permitted for the fair market value of the property contributed. Additionally, the donor who contributes property to the Trust which, if sold, would produce a long time capital gain will not be taxable on such gain, yet the donor will receive a deduction for the full fair market value of the property.

Examples of property which are commonly eligible for this favorable tax treatment are stocks, bonds, and real estate which has been held for over 12 months and for which the fair market value exceeds the donor's basis in such property.

Items of tangible personal property such as books and paintings may be eligible to receive this advantageous tax treatment only where such items would be used by the Trust in furtherance of its tax exempt purpose. Otherwise, the donor would be taxable on 40% of the appreciation on such property.

In order to insure that a donor would receive the most favorable tax treatment on any contribution, representatives of the Trust would welcome the opportunity to discuss with any potential donor the anticipated use by the Trust of items of appreciated tangible personal property which may be contributed to the Trust.

Anyone considering making a contribution to the Trust might wish to consider a contribution of property he holds for which only a limited market exists. By donating property which the donor is unable to sell, he can receive an immediate deduction for the property's fair market value, which value should be established by a qualified appraiser. Thus, a donor may be able to get an immediate tax advantage from the property which is otherwise not financially productive for the donor.

Complete Interest Usually Required

A donor is generally permitted to claim a deduction only for a contribution of his complete interest in a property. There are, however, two important exceptions to this rule.

The first exception is that the charitable deduction is allowed for gifts of an undivided fractional interest in property such as donation of one-half interest in a property.

The second exception is that a charitable deduction is allowed for contributions of remainder interests in a property which is either a personal residence or a farm.

This type of donation is often made by elderly taxpayers who wish to reduce their current income taxes and thereby insure that they are able to maintain their current lifestyle for the remainder of their lives and provide for a charity in their estate.

Corporate Gifts Also Allowed

The advantages which may be obtained by individuals for contributions of appreciated properties or for contributions of properties which have a limited current market are also available to corporations.

Therefore, we would like our readers to be aware that, in certain circumstances, the most effective method of supporting the Trust may well be through a corporate donation.

We would also like to remind our supporters that it is a simple matter to either have a new Will prepared or to have a Codicil added to one's current Will in order to provide for a donation to the Trust by the donor's estate. By doing so, supporters of the Trust who feel they are currently unable to make contributions can insure that the Trust will be provided for in their estate.

Yearly Limitation Is High

We would like to point out that the IRS does limit the amount of property which an individual may contribute and deduct in any one taxable year. However, such limitations are extremely high and of consequence to very few taxpayers.

An individual is entitled to deduct 50% of his adjusted gross income for contributions to certain qualified charities.

Limitation is 30% of the adjusted gross income for contributions of appreciated long term capital gain property by individuals.

The percentage limitations are much more restrictive for corporations. Generally, they are permitted to make contributions of up to 5% of their income for a taxable year.

This overview of the income tax rules relating to charitable donations is not intended to provide a complete description of the tax rules applicable to such donations, but rather is intended to provide some guidance for our supporters. We suggest that any questions which may arise should be discussed with an individual's own attorney or financial adviser.

Melvin R. Jessup, HD '45 Chairman, Educational Trust

Mel Jessup, a 1945 graduate in pharmacy from the University of Southern California, has served on the Trust since 1974, and is currently its chairman.

Jessup lives in Berkeley, Ca., and owns M. Jessup Co. in nearby Emeryville—a salvage company selling general merchandise at discount prices, with stores in Oakland, Antioch, Pleasant Hill, San Jose and San Mateo.

In his community, he is an active Rotarian in the Berkeley club, and a member of St. Clement's Episcopal Church.

Harold Steinke K '43 Is Trust's Vice Chairman

A dual major at Wisconsin in Dairy Industry and Economics led to a business career for Harold C. Steinke following his graduation in 1943. He was appointed to the Trust in 1975.

Currently he is Vice President for economics and industry relations for Borden, Inc., Food Division, headquartered in Columbus, Ohio. He is president of the National Cheese Institute, Vice President of the Cheese Importers Association of America, alternate director of the National Food Processors Association, member of the Food and Agriculture Committee of the Chamber of Commerce of the U.S., and chairman, European Community, for the U.S.A. Agricultural Conference.

He served in WW II for three and one-half years as an infantry captain in Europe.

Arch R. Updike, ThD '43 Secretary, Educational Trust

Arch Updike graduated in 1943 from the University of Florida, with a degree in Horticulture, serving in the U.S. Navy after his graduation until 1945.

At that time, he joined the family citrus business which had been securely established by his father during World War II, along with his brother and brother-in-law. Today, the Alcoma Association, of which he is president, is one of the most respected citrus operations in Florida, controlling large acreages of groves and operating a sizable concentrate plant as well.

In industry service, he is president of the Agricultural Research Center in Lakeland, and in community service he is involved with the Lake Wales Airport Committee.

"Lots of grandchildren" is his major personal interest, but Chi Phi rates a close second. He was a "mover" in erection of Theta Delta's house, and involved with expansion at Nu Delta, Xi Delta and Beta Zeta since that time. He was named to the Trust in 1976.

William R. Kitchin A '49 —the Trust's Treasurer

Alpha for two terms of his University of Virginia chapter, Kitchin spent three years as an Air Force pilot during the Korean War, then worked for several food companies, becoming vice president in charge of Morton frozen food production of Continental Baking Co. in 1968.

Today he operates his own business in Atlanta, Kitchin Enterprises, with coin laundries, washing equipment sales, and maintenance and repair of laundry and dry cleaning equipment.

Chi Phi is a major activity. He has served on the Grand Council and currently is chairman of the special Finance Committee supervising money management. He remains active

THE TRUST

by Carl J. Gladfelter A-T 33
Consultant to Trust

The Chi Phi Educational Trust was founded 49 years ago. Now, as the result of prudent management and generous alumni giving, the fund approaches \$500,000 in assets.

Still the Trustees are presently not able to service some of the requests for assistance, or at best must reduce the size of the grants requested due to the increase in the number of requests for scholastic aid and loan assistance brought by mounting inflation. Increases in the cost of maintaining its other programs also presents a serious problem.

A brief description of major Trust programs follows:

Muscular Dystrophy ...

A recent issue of The Chakett carried an article describing the Muscular Dystrophy campaign sponsored by the Trust to encourage active chapters in raising funds for this cause which Congress has commended as our national project.

Over a period of seven years, approximately \$50,000 has been given to this worthy charity through the efforts of Chi Phi.

Scholarships, Loans ...

Numerous letters of thanks from recipients of Trust scholarships and student loans were printed in the February issue of The Chakett. These letters acknowledged the importance of the assistance received—usually that the aid was timely and essential to his remaining in school.

Elsewhere on these pages will be found a list of 27 students who have received scholarship aid during the 1978-79 school year, encompassing actives from a large number of chapters.

Leadership Training ...

The Trust-sponsored Krannert Leadership Conference provides an annual "short course" in management techniques and group dynamics, thus providing direct assistance to chapters as well as individuals.

These conferences, costing more than \$3000 annually, are held prior to Congress each year with those attending being ordinarily underclassmen with more than one year remaining before graduation.

Library Grants ...

Not as well known but certainly most bene-

ficial to chapters is the Library/Study Area grant program.

These grants usually are in the \$500 to \$3000 category, and are a direct effort to sponsor better scholarship.

Chapters that have benefited in recent years include Alpha, Tau, Alpha-Alpha, Alpha-Tau, Omega, Epsilon Delta, Alpha Delta, Theta Delta, Rho Iota Kappa, and Xi Delta.

Sparks Medals ...

Probably the best known, and certainly the oldest, of the Trust's programs is the award of the Sparks Memorial Medal to the top scholastic achiever in each chapter.

This program cost perhaps \$150 a year 10 years ago, but now approaches \$500 per year.

Interfraternity Research ...

The Trust from time to time has sponsored Interfraternity Research with the Interfraternity Foundation, and it has supported the Interfraternity Institute of Indiana University.

Gifts to Colleges ...

Direct gifts in support of student housing and educational projects of Colleges and Universities have been granted to a number of institutions.

Included are: University of Nebraska, Amherst College, University of Georgia, Emory University, and the University of Southern California.

Growth Only Through Donations ...

IRS regulations governing public trusts, in which category the Chi Phi Educational Trust falls, prohibit the retention of any earned income.

The Trustees are required each year to contribute all earned income to purposes stated in the Trust agreement. Thus the Trust can grow only through donations or enhancement in value of investments such as real estate or securities donated.

Deductibles Available ...

In an article on the opposite page, Attorney Edward O. Wayson, Jr., Grand Eta (our national counsel), PsiD 72, A-A 72, explains donation procedures available to potential donors, and deductions which can be made from income for contributions to the Trust

which is a recognized charity.

Over the years, the usual contributions have been in the form of cash, greatly appreciated and needed of course on a continuing basis and from a wide number of donors.

However, the Trust can and does accept gifts of property and securities, and invites alumni who have not previously supported the Trust to do so through the many avenues of gift-giving available.

Trust's Record Excellent ...

The Trust has a long and outstanding record of support of excellence in scholarship and individual assistance to students in time of critical need.

The program merits your investigation and assistance. You may use the form on this page if you wish to send a gift to the Trust, or to obtain more facts regarding the Trust and its programs.

BEQUEST FORMS

For A Specific Sum

I give and bequeath to the CHI PHI EDUCATIONAL TRUST, a Trust duly organized and existing under the laws of the State of Georgia, the sum of \$ _____ dollars, for its corporate purposes.

For A Specific Purpose

I give and bequeath to the CHI PHI EDUCATIONAL TRUST, a Trust duly organized and existing under the laws of the State of Georgia, the sum of \$ _____ dollars for (insert purpose) _____ (to which may be added, "As a memorial" to _____).

Naming A Residuary Legatee

All the rest residue, and remainder of my estate, real and personal, of which I shall die seized or possessed or to which I shall be entitled at the time of my death, I give, devise, and bequeath to the CHI PHI EDUCATIONAL TRUST, a Trust duly organized and existing under the laws of the State of Georgia, for its corporate purposes.

SCHOLARSHIPS

The Educational Trust has furnished scholarships to 27 students, from 19 different chapters, during the period August 1, 1978-May 1, 1979, as follows:

Craig A. Zanot, Alpha-Tau '77, Law Student, Indiana University Law School.

James W. Wolf, Alpha Delta '79, Pennsylvania State University.

Brooks S. Baker, Gamma '81, Emory University.

Darryl G. Brewster, Alpha '79, University of Virginia.

Timothy V. O'Connor, Xi '81, Cornell University.

John McClain, Beta Zeta '79, University of Central Florida.

Albert S. Carboloff, Eta Delta '79, University of Southern California.

Mark C. Manning, Rho Iota Kappa '79, University of Rhode Island.

John Jordan, Omega '78, Georgia Institute of Technology.

Kenneth P. Waller, Tau '80, University of Alabama.

Terence A. Brown, Iota '79, Ohio State University.

Tim Beane, Alpha-Alpha '79, University of North Carolina, Chapel Hill.

Thad Throneburg, Alpha-Alpha '78, Law Student, University of North Carolina Law School.

William S. Esslinger, Alpha-Chi '80, Ohio Wesleyan University.

Kenneth L. Barton, Alpha-Chi '80, Ohio Wesleyan University.

Stephen D. Cooke, Sigma Delta '80, University of California, Davis.

Michael Bigham, Alpha '79, University of Virginia.

Rick Ligon, Psi Delta '82, University of North Carolina, Charlotte.

Mark Pfefferle, Psi '78, Graduate Student, Lehigh University.

John Liebel, Psi '79, Lehigh University.

Pierre A. Cornell, Alpha-Chi '81, Ohio Wesleyan University.

Ken Feely, Gamma '79, Emory University.

Sam Hatcher, Alpha-Alpha '79, University of North Carolina, Chapel Hill.

Steven Schneiderwind, Alpha Theta Chi '77, Law Student, University of Nebraska.

Matthew P. Hanus, Alpha-Chi '80, Ohio Wesleyan University.

Kenneth M. Kidd, Jr., Beta '78, Law Student, University of North Carolina.

Kent W. Sink, Gamma Zeta '79, University of North Carolina, Wilmington.

Make a Gift to the Educational Trust

Chi Phi Educational Trust
3400 Peachtree Rd., NE, Suite 1041
Atlanta, Ga. 30326

I pledge a gift of \$ _____ payment enclosed
 send notice during month of _____

from _____
PERSON OR ORGANIZATION

STREET ADDRESS CITY, ZIP, AREA PHONE

I wish this gift to be used as much as possible for:

Scholarships or Loans to Deserving Chi Phi Actives.

Library improvements in chapter houses.

Permanent Endowment Fund.

Other Purpose: _____

(Subject acceptance by Trustees)

Please send additional information regarding

A gift of property.

A gift of securities.

A bequest through my estate.

Other: _____

(If a memorial) In Memory of _____

and send acknowledgement to _____

NAME

ADDRESS

ALUMNI NOTES

ALPHA

Edward O. Parry Jr. '65 of Woodland Hills, Ca. has been selected Chairman of Connecticut General Life Insurance Company's Gold Circle Cabinet for 1979.

Dr. Robert B. Rutherford Jr. '65, Associate Professor of Education at Arizona State University, recently co-authored a book entitled "Teachers and Parents," a guide to interaction and cooperation published by Allyn and Bacon, Inc., Boston, Ma.

BETA

Denman K. McNear '48 of Kentfield, Ca. writes, "In Oct. 78 Dave Gaillard, Jack Levedahl, Bobby Symonette, myself and our wives had a reunion dinner in San Francisco. We four were pledged in Beta of Chi Phi, Sept. 1942; 4 out of 10."

GAMMA

Robert W. Lee Jr. '75, attorney, is now located on 12th Floor, City Federal Bldg., Birmingham, Al.

Robert E. Martin '31, Atlanta, Ga. has been named in the nation's first group of nearly 300 men and women qualified and designated as Certified Business Communicators.

DELTA

James R. Dvorin '66 of Sanibel Island, Fl. has been admitted to Florida Bar Administrative & Legal Consultant to Captran, Inc., the interval ownership company.

EPSILON

Stephen D. Beck '67 of Newark, De. received M.B.A. degree from Wharton School, U. of P., Dec. 21, 1978. New job as Investment Manager, Mid-Atlantic Real Estate Investment Office, The Prudential Life Insurance Company of America.

John R. Clark III '77 of Lexington, Va. is in his second year at Washington & Lee Law School and living with his new bride, Carrie, in Lexington. **Dana C. Williams**, E'77 was an usher in their wedding party and is now studying hospital administration in Atlanta, Ga.

James D. Ireland '35 of Charleston, W. Va. has retired from Oil & Gas production, wholesale & retail food distributor-Administration in Municipal Government and finally in 1978 as Finance Director W. Va. Dept. of Highways. Now in Management & Finance Consultation and S.W. Florida investments.

Donald E. Woodhouse '68 is Plant Manager for Arnar-Stone, Inc., Aguadilla, Puerto Rico.

ZETA

F. Willard Heintzelman '34 of Philadelphia, Pa. was appointed Executive Director of The International Group of Accounting Firms, an association of CPA and CA firms in United States, Canada and Europe, Sept. 1, 1978.

ETA

Furman G. Wall Jr. '66 of Virginia Beach, Va., was promoted to First Vice-President & Director of Investment Corporation of Virginia and elected Director of Wall Realty Corp., in March '79.

IOTA

Vincent Bolling Jr. '55, Dayton, Ohio, C.E.O. President of Aircor Coals, Inc., writes, "Aircor has expanded and now has a sales office in Lexington, Ky.; executive offices remain in Dayton."

William A. Ternent '53 has been appointed as an HEW Fellow for the 1978-79 period. He is one of 11 professionals in health, education, and welfare selected from more than 850 applicants. Dr. Ternent is an Associate Professor on leave from Howard University, Washington, D. C. where he teaches graduate courses in organizational communication, research methods and statistics.

KAPPA

Gary R. Konwinski '73 of Lansing, Mi., geologist, writes, "This Chi Phi is looking for a new job. Consulting in soil science, geology, land use & building earth structures. Maybe our Chi Phi network of communication could be of help?"

LAMBDA

John Pearson '43 starts Stroke Club of Diablo Valley, having had a stroke 12 years ago. It is called the VIPs (Vascular Impairment Prevention Society). The club is four years old with 20 members. He also owns Pearson Lumber Co., Pleasant Hill, Ca.

MU

Ronald J. Eberhard '63 has moved his engineering office to: 774 Town Line Rd., Hauppauge, N.Y.

Richard P. Moon '63 graduated from Brooklyn law school, June 1977; admitted to practice of law in New York, Jan. 1979; will be embarking on new career in patent law.

William F. Slattery '75 was promoted to Project Engineer for the Ceco Corp. and was transferred to the corporate headquarters in Chicago, Ill., March 9, 1979.

PI

Dr. Robert P. Christopher '54, Memphis, Tn. writes, "I would like to extend my congratulations and best wishes to the new executive director of our order."

RHO

Walter D. Macht '40 of Paoli, Pa. is President of James S. Ifil & Co. Inc. Insurance.

Harrison McAlpine Jr. '51 of McLean, Va. writes that his son, Ken, is a Chi Phi at University of Virginia and is in his sophomore year.

TAU

Jerry D. Ingram '76 was promoted to First Lieutenant, Nov. 11, 1978, U. S. Army.

PHI

Dr. Richard N. Podell '64 was recently appointed Director of the Family Practice Residency Program, Overlook Hospital, Summit, N. J.

OMEGA

A. Dent Sullivan '66 of Boone, N. C. completed MS in Accounting, Appalachian State University, Dec. 16, 1978. While in school was a member of Beta Alpha Psi (Acct. Honorary) and Beta Gamma Sigma (Business Honorary).

Stephen P. Tolleson '69, Atlanta, Ga. was promoted to manager of Building Planning in May 1978 for Southern Bell; was elected president of the Iveys Condominium Association, Inc., April 1978.

ALPHA-ALPHA

David R. Badger '69 is a member of law firm of Badger, Blackford, McNeely & Tepper, P.A., Charlotte, N. C.

Michael L. Byers '61 of Elon College, N. C. is Interact Computer Systems Vice-President.

Ralph M. Potter '59 is attorney; President of Paris & Potter Enterprises (Fast Food Chain); elected Chairman of the Board, North Carolina Restaurant Association; and elected Chairman of the Board, Highland Savings & Loan Corp., Fayetteville, N. C.

Michael E. Werner '76, Nutley, N. J. is a dental student and will graduate, June 1, 1979.

ALPHA-TAU

John S. Flintosh '59 is supervisor, sales planning, and analysis dept., Ford Parts & Service Division, Ford Motor Company, Dearborn, Mi.

Dr. Robert J. Cotter '64 is Chief Surgical Resident, Flint Osteopathic Hospital, Flint, Mi. and wife is in private practice there also.

John F. Foley '53, attorney, is Mayor of Monte Sereno, Ca.

Michael E. Medvec '77 of Canton, Mi., writes, "Congrats to Alpha-Tau in another great year of pledging. Go A-T."

ALPHA-CHI

Jeffrey G. Ellinwood '62 of Long Valley, N. J., writes, "I have completed 3 years as Editor of TEMPO, official publication of N. J. Music Educators; on Board of Directors of NJMEA."

William P. Zahler '61 of Scranton, Pa., writes, "I am the Director of Theatre and Coordinator of the Communications Department at the University of Scranton. I teach English and Communication and direct plays for the university."

ALPHA DELTA

Earl E. Rumberger '53 of Pittsburgh, Pa. is manager, Industrial Hygiene, Aluminum Company of America.

GAMMA DELTA

David J. Olson '70 has been named manager of participant accounting of the Clayton, Mo.-based petroleum exploration company, South Ranch Oil Company, Inc. He is responsible for accounting, budgeting and forecasting.

Paul D. Silliman '28 of Terre Haute, In., writes, "It appears, with fraternities, as with our economy, there is a trend to the sun belt; still it is good to hear of the action 'in the north' through The Chakett."

EPSILON DELTA

Alan E. Fischbach '66 was on overseas assignment in Mainz, Germany with IBM Corp. from July 1976-June 1977; recently promoted to Staff Manufacturing Engineer at the IBM Corp., San Jose, Ca. plant.

BIRTHS & MARRIAGES

Births

BETA

Bro. and Mrs. Frank C. Carman III '63 announce the birth of a son, Richard Charles, born Dec. 26, 1978.

Bro. and Mrs. Steven W. Tavan '72 announce the birth of a daughter, Elana Rachael, born March 27, 1978.

GAMMA

Bro. and Mrs. Frank Sule, Jr. '69 announce the birth of a daughter, Cheryl Leigh, born Jan. 6, 1978.

ETA

Bro. and Mrs. James A. Black, Jr. '73 announce the birth of a son, James Allen III, born Sept. 15, 1978.

Bro. and Mrs. Jefferson L. Davis, Jr. '66 announce the birth of a son, Jefferson L., III, born Sept. 1, 1978.

Bro. and Mrs. John M. Hanger '69 announce the birth of a daughter, Maggie, born Oct. 7, 1978.

Bro. and Mrs. William A. McWilliams '72 announce the birth of a daughter, Cary Prigden, born Oct. 11, 1978.

Bro. and Mrs. Leonard Meltz, Jr. '70 announce the birth of a daughter, Bryan Whittimore, born Oct. 21, 1978.

Bro. and Mrs. Joseph B. Neighbors III '64 announce the birth of a daughter, Jennie Winn, born May 14, 1977.

Bro. and Mrs. Scott W. Offen '71 announce the birth of a daughter, Carroll Winfield, born July 26, 1978.

Bro. and Mrs. Furman G. Wall Jr. '66 announce the birth of a daughter, Kathleen McGregor, born recently.

IOTA

Bro. and Mrs. Stephen E. Andrews '70 announce the birth of a son, Jason Robert, born May 3, 1978.

Bro. and Mrs. Ned A. Kuivinen '58 announce the birth of a son, Matthew Thomas, born May 23, 1978.

LAMBDA

Bro. and Mrs. James G. Fritz '76 announce the birth of a daughter, Alyssa Lawson, born Nov. 27, 1978.

MU

Bro. and Mrs. David H. Cooley '66 announce the birth of a son, Thomas David, born Aug. 14, 1978.

Bro. and Mrs. Charles R. Schwartz '68 announce the birth of a son, Richard Charles, born Nov. 27, 1978.

RHO

Bro. and Mrs. Robert J. Lyons, Jr. '73 announce the birth of a daughter, Erin B., born July 19, 1978.

Bro. and Mrs. Richard C. Traves '72 announce the birth of a son, Benjamin, born in Aug. 1978.

ETA DELTA

Col. David B. Clardy '52 is Test Pilot/Controller, Flight Systems, Inc., Holloman AFB, NM, USAF retired.

S. Duncan Puett '35 of Sequim Wa., writes, "Spending eight months per year in Washington. Great hunting, fishing and golf."

Blair M. Westlake '76 is currently finishing law school (in May) at Whittier College School of Law, Los Angeles. Was recently hired by Legal Department as a clerk at Columbia Pictures Industries, Burbank, Ca.

THETA DELTA

Brig. Gen. William C. Rousse, '51 USA (Ret), is now an Assistant to Florida's Commissioner of Agriculture, Doyle Conner, a classmate, and is residing at 2320 Killarney Way, Tallahassee, Fl.

Michael P. Smodish '67 of Boynton Beach, Fl. has opened his own office for the practice of law, Jan. 1, 1979.

RHO IOTA KAPPA

Paul A. Chassey '65 of South Pasadena, Ca., writes, "Phil Ise '64 contacted me this past year. He just recently moved to the Los Angeles area from the East Coast and saw my name in the Chakett. We got together for a few beers after a 13 year hiatus! We were joined by **Gene DeMichael** '63 who was in L.A. on a business trip from Baltimore, Md."

ALPHA THETA CHI

Donald R. Hewitt '23 of Des Moines, Ia., writes, "Secretary of the Central Iowa Chapter of the Iowa Society of the Sons of the American Revolution; secretary-treasurer, Greenville Dodge Camp Sons of Union Veterans of the Civil War; and secretary of the Iowa chapter of the Military order the Loyal Legion of the U.S."

NU DELTA

Gordon E. Hadlow '68 is now a pilot with Frontier Airlines based in Denver, Co.

Scott W. Page '76, first lieutenant, MP Company Executive Officer will be reassigned to Korea in June 1979.

XI DELTA

Robert W. Coleman '71 of Ft. Myers, Fl. was promoted to District Manager, Florida Power & Light, Feb. 1, 1979.

ALPHA ZETA

Kendall H. Strickland '75 of North Versailles, Pa. was promoted to Sales Manager, Feb. 1, 1978. Is responsible for chemical household product sales in Western, Pa., Ohio, W. Va., & Maryland for Boyle Midway Div. American Home Products Corp.

Inactive Chapters

NU

Laurence S. Bosworth Jr. '49 is a member of Gideons and Sons of the American Revolution.

Capt. Thomas H. Thompson '67, USA, Operations Officer, Fort Hood, Tx. writes, "I would like to see Nu Chapter return to active status."

birth of a son, Jacob Reese, born July 22, 1978.

Bro. and Mrs. Gerald L. L. Gigon '67 announce the birth of their first daughter, born Nov. 13, 1977 in England.

OMEGA

Bro. and Mrs. James A. Curry '66 announce the birth of a son, James Allen, III, born Aug. 10, 1978.

Bro. and Mrs. Michael T. O'Sheasy '70 announce the birth of a daughter, Beth Anne, born May 19, 1977.

Bro. and Mrs. James H. Wylie '61 announce the birth of a son, David Inge, born April 4, 1978.

ALPHA-ALPHA

Bro. and Mrs. Gregory P. Chrisafis '67 announce the birth of a daughter, Nicole Mara, born March 16, 1978.

Bro. and Mrs. Thomas T. Downer '62 announce the birth of a daughter, Morgan Elizabeth, born Aug. 26, 1978.

Bro. and Mrs. Ronald E. Johnson '70 announce the birth of a daughter, Elizabeth Renee, born Oct. 20, 1978.

Bro. and Mrs. Richard B. Johnston, Jr. '68 announce the birth of a son, Blaine Patrick, born Feb. 1, 1978.

Bro. and Mrs. Francis S. Richards II '62 announce the birth of a son, Jason St. John, born March 31, 1978.

ALPHA-TAU

Bro. and Mrs. John L. Finkleman '67 announce the birth of a son, John, born July 17, 1978.

Bro. and Mrs. Robert W. Kreps '68 announce the birth of a son, Charles Robert, born Oct. 3, 1978, in London, England.

ALPHA-CHI

Bro. and Mrs. William A. Rough, Jr. '70 announce the birth of a daughter, Jill Chandler, born Oct. 18, 1978.

ALPHA DELTA

Bro. and Mrs. Joseph T. Anastasi, Jr. '75 announce the birth of a son, Keith James, born May 24, 1978.

GAMMA DELTA

Bro. and Mrs. Mark G. Enderlein '75 announce the birth of a son, Brian David, born Nov. 2, 1978.

EPSILON DELTA

Bro. and Mrs. Leonard L. Aubert '71 announce the birth of a son, Paul Louis, born April 10, 1978.

ETA DELTA

Bro. and Mrs. Stephen C. Moore '70 announce the birth of a son, David Vincent, born Nov. 3, 1978.

RHO

Bro. and Mrs. Scott L. Rose '70 announce the birth of a son, Stephen Christopher, born Oct. 18, 1978.

IOTA DELTA

Bro. and Mrs. Dana A. Mollenkopf '72 announce the

CHAPTER ETERNAL

DELTA

John Hawthorne Worth '29 of Phoenix, Az., died Dec. 23, 1978. Born Dec. 23, 1907, Westfield, N. J. Initiated Dec. 5, 1925.

EPSILON

Franklin Chinn Mason '31 of Frankfort, Ky., died March 30, 1978. Born Nov. 22, 1909, Frankfort, Ky. Initiated April 17, 1928. Affiliated, Alpha, 9-20-30.

Irvin Christian Munt Jr. '29 of Richmond, Va., died Aug. 15, 1978. Born Nov. 14, 1904, Petersburg, Va. Initiated Nov. 30, 1925.

THETA

Paul Emil Olsen '27 of Northfield, Ma., died Nov. 17, 1978. Born May 23, 1902, New York, N. Y. Initiated Oct. 20, 1923.

Stuart Milton Rogers '20 of Syracuse, N. Y., died Feb. 10, 1979. Born Sept. 18, 1899, Watertown, N. Y. Initiated March 3, 1917.

IOTA

Charles Warren Anson '28 of Lexington, Ky., died Sept. 30, 1962. Born Aug. 1, 1904, Prospect, Oh. Initiated May 3, 1926.

George Andrews Hart '23 of Dayton, Oh., died June 14, 1976. Born June 15, 1901, Toledo, Oh. Initiated June 12, 1922.

Harlon Parker Stewart '17 of Huron, Oh., died Feb. 1, 1979. Born Oct. 13, 1895, Norwalk, Oh. Initiated Feb. 21, 1914.

Dan Hugh Webster '20 of Hamilton, Oh., died Dec. 18, 1976. Born Sept. 11, 1898, Hamilton, Oh. Initiated Dec. 8, 1917.

KAPPA

Roland Willard Burt '22 of San Diego, Ca., died Sept. 26, 1978. Born June 18, 1899, Oak Park, Il. Initiated March 8, 1920.

LAMBDA

Dean Warner Law '40 of Los Angeles, Ca., deceased, date unknown. Born July 12, 1918, San Francisco, Ca. Initiated Jan. 31, 1937.

Francis Howard Lindus '33 of Honolulu, Hi., died Aug. 4, 1978. Born July 16, 1911, San Mateo, Ca. Initiated Sept. 22, 1930.

Wendel Kirth Nicolaus '28 of San Francisco, Ca., died Jan. 15, 1979. Born Oct. 6, 1904, Sacramento, Ca. Initiated Aug. 30, 1924.

MU

George Kearney Bradford Jr. '22 of New York City, died March 7, 1974. Born June 21, 1898, Brooklyn, N.Y. Initiated Nov. 8, 1916.

William John Joseph Davis '68 of Lake Mills, Wi., died Feb. 14, 1979. Born Nov. 17, 1946, Roselle Park, N. J. Initiated Oct. 3, 1965.

George Bruce Richardson '49 of Pittsburgh, Pa., died Sept. 15, 1978. Born Feb. 23, 1927, Jersey City, N. J. Initiated Feb. 16, 1947.

Charles Ulysses Savoye '17 of Red Bank, N. J., died Dec. 25, 1978. Born Dec. 12, 1894, Allandale, N. J. Initiated Nov. 6, 1913.

XI

Robert Barnes Vincelette '42 of Verona, N. J., died Nov. 25, 1978. Born Aug. 9, 1916, Newark, N. J. Initiated March 5, 1939.

PSI

Robert Haydock Enscoe '31 of Toby Manna, Pa., deceased, no date given. Born Nov. 18, 1908, New York, N. Y. Initiated Feb. 12, 1928.

OMEGA

Frederick James Howden '21 of Savannah, Ga., deceased, date unknown. Born June 15, 1897, Quincy, Fl. Initiated June 15, 1917.

ALPHA-TAU

Stanley Mills Copland '26 of Detroit, Mi., died June 7, 1978. Born July 8, 1903, Detroit, Mi. Initiated May 13, 1923. Affiliated, Lambda, April 19, 1924.

Robert Miles Nelson '40 of Rolling Hills, Mi., died Jan. 10, 1979. Born Dec. 3, 1918, Royal Oak, Mi. Initiated Dec. 1, 1938.

ALPHA-CHI

INITIATES

DEC. 29, 1978-MARCH 26, 1979

ALPHA (3)

Stephen M. Durden, Jacksonville, Fla.
Leo J. Egan, Garden City, NY
Samuel W. Shelton, III, Goldsboro, NC

GAMMA (22)

Malcolm L. Miller, Sarasota, Fla.
John D. Henry Jr., Atlanta, Ga.
Matthew H. Heitman, Miami, Fla.
Scott H. Margol, Miami, Fla.
William J. Brooks, Cumming, Ga.
Peter A. Okuhn, Clifton, NJ
Kenneth M. Davis, Anniston, Ala.
Andrew D. Dunn, Nashville, TN
Charles A. Staley, III, Madison, CT
Daniel S. Howe, Wilmington, DE
Douglas A. Pickert, Katonah, NY
Alan M. Gross, Levittown, Pa.
Rene Romero Jr., Tampa, Fla.
James C. Goodwyne, Chamblee
Milton J. Frank, Narberth, Pa.
Mark W. Elice, Middletown, NJ
Hollis Jay Wiseman Jr., Mobile
Marcus M. McIntire, Tampa, Fla.
David B. Gandy, Atlanta, Ga.
Charles H. Dittmar Jr., Jacksonville, Fla.
Joe M. Hulsey III, Duluth, Ga.
Joel C. Jenkins, Mt. Airy, Ga.

EPSILON (14)

Mark Saint George Jones, Petersburg, Va.
Thomas P. N. Keeley, Roanoke, Va.
Mark W. Thompson, Atlanta, Ga.
Richard L. Ware, Richmond, Va.
Christopher D. Treadwell, Virginia Beach, Va.
Orrin P. Whyte, Accokeek, Md.
Marshall K. Kiser, Bluefield, W. Va.
Gordon C. Lee, Roanoke, Va.
David P. Watson, Virginia Beach, Va.
Robert P. Terraneo, Old Tappan, NJ
Daniel M. Slack, Hickory, NC
Gary D. Mason, Preston, Va.
William D. Bass, Rice, Va.
Mark M. Clark, Kilmarnock, Va.

KAPPA (17)

Christopher E. Hagerup, Milwaukee, Wis.
Russell M. Lein, Brookfield, Wis.
David P. Nordin, Wauwatosa, Wis.
John T. Baker IV, Middleton, Wis.
Todd A. Casanova, Janesville, Wis.
Michael J. Zimbrick, Madison
Christopher H. Slocum, Wayzata, Minn.
Matthew R. Rice, Janesville, Wis.
Robert F. Berg Jr., Janesville, Wis.
David E. Porcetta, Crafton, Wis.
James G. O'Reilly, Cedarburg, Wis.
Theodore C. Meyer, Brookfield, Wis.
John H. Underwood, Green Bay
David W. Kurtz, Brookfield, Wis.
Kevin M. Shanahan, Whitefish Bay, Wis.
Thomas Mark Terrill Jr., Kenilworth, Ill.
Mark P. Koenig, Port Washington, Wis.

PI (7)

Edward D. Smith III, Huntington, NY
Friedrich Nikolas Wilms, Lindenhurst, Ill.
Robert M. Kunimura, Springdale, Ohio.
Matthew D. Menghini, St. Louis, Mo.
Robert W. Esser Jr., Huntington, NY
Alan L. Buchman, Blairsville, Pa.
Gilbert W. Cox III, Needham, Ma.

TAU (9)

Charles G. Capps, Pensacola, Fla.
Grady R. Edmondson, Mobile, Ala.
Timothy J. Burson, Morrow, Ga.
George C. Scarborough, Pensacola, Fla.
John M. Green, Mobile, Ala.
John H. Street Jr., Eastaboga, Ala.
William M. Weatherly, Pine Hill
Christopher M. McDonough, Gadsden, Ala.
David T. Schoel, Birmingham, Ala.
Clifford W. Stanwick, West Hartford, Ct.
John F. Spiller, Guilford, Ct.
Thomas J. Scott Jr., Warner Robins, Ga.
Andrew S. Ragland, Decatur, Ga.
Thomas A. Brackmann, Evansville, Ind.
Alan F. Sides, Macon, Ga.
Daniel H. Drechsel, Libertyville, Ill.
Lester L. Gostin, Macon, Ga.
Enoch A. Thomas, Decatur, Ga.
Robert W. Barr, Warwick, R. I.
Steve A. Moraitakis, Decatur, Ga.

ALPHA-TAU (5)

Matthew J. Bendelow, Montague, Ma.
Peter J. Petesch, Northfield, Ill.
Duane A. J. Bernard, Tucson, Az.
William F. Rollins, Montague, Ma.
Peter D. Bosch, Wyoming, Mi.
David S. Fisher, Montville, NJ
Patrick J. Fletcher, Rutherford, NJ
Robert D. Graney, Belmar, NJ
William S. Green, Easton, Pa.
Joseph H. Hartmann, Gibbsboro, NJ
Harry V. Keefe, Greenwich, Ct.
Lewis J. Korngut, Cranford, NJ
John R. Krissinger, Lancaster, Pa.
Timothy L. Lampkin, Maplewood, NJ
Eugene Malinquist, Digmans Ferry, Pa.
John A. Marr, Little Silver, NJ
Douglas H. Oberkircher, Paoli, Pa.
Mark B. Peterson, Garden City, NY
Glenn R. Pierce, Plymouth Meeting, Pa.
David M. Prown, Orange, Ct.
Eric P. Reichenbach, White Plains, Pa.
Peter M. Sullivan, Ridgewood, NJ
John L. Ventura, Framingham, Ma.
Bryan J. White, Rio Grande, NJ

ALPHA-CHI (8)

Elliot C. Warren, Wellesley, Ma.
Jeffrey A. Hubschman, Yellow Springs, Ohio.
Steven B. Neil, Lake Forest, Ill.
William S. Spicer, Baltimore, Mo.
Mark S. Goldberg, Somerset, Ma.
Kenneth H. Nitchie, Marlborough, Ct.
Scott D. Herring, Tamaqua, Pa.
George W. Cox, Bronx, NY

ALPHA DELTA (5)

Scott William Wycoff, Lewistown
George J. Podhor, Lansdale, Pa.
Louis D. Zegarelli, Bridgeville, Pa.
Jeffrey H. Brody, Cherry Hill, NJ
Lee Giannone, Hawthorne, NJ

EPSILON DELTA (5)

Michael H. Dague, The Dalles
Gary B. Nishizaki, Ontario, Or.
Dave J. Hughes, Eugene, Or.
David C. Martinenko, Corvallis
William H. Cary Jr., San Jose, Ca.

THETA DELTA (25)

Leopoldo Villa, Bogota, Columbia
Robert Mahoney, New York, NY
David L. Lichtman, Tampa, Fla.
Robert L. Shepherd, N. Palm Beach, Fla.
Brian T. Fitzgerald, Auburn, Ala.
Alex C. Smith, Glenwood, Fla.
Christopher L. Blake, Orlando, Fla.
Paul E. Lichtman, Tampa, Fla.
Joseph A. Engel, Oshkosh, Wis.
Antonio J. Falluca, Orlando, Fla.
Thomas B. Seibert, Altamonte Springs, Fla.
John P. Wolfe, Largo, Fla.
Robert G. Self II, Indianantic, Fla.
Mike Tipton, Maitland, Fla.
Isidro A. Cardella, Miami, Fla.
Stephen C. Marks, Coconut Grove, Fla.
Robert G. Carlson, Winter Park
Michael P. Klug, Merritt Island, Fla.
Peter P. Barcia, Plantation, Fla.
Elihan Baruch Fleisher, Miami, Fla.
Michael V. Pate, Kissimmee, Fla.
Jeffery C. Palmer, Fairport, NY
Lee Y. Grube, Ft. Lauderdale, Fla.
Adam I. Chaifetz, Miami, Fla.
Dairel J. Snapp, Gainesville, Fla.

IOTA DELTA (11)

Mark V. Petri, Carmel, Ind.
Josef L. Szadaj, South Bend, Ind.
Christopher D. Pahlike, Indianapolis, Ind.
Jerry E. Hoover, Indianapolis, Ind.
Brian D. Hinton, Indianapolis, Ind.
Robert E. Jeffers, Hobart, Ind.
Craig S. Hall, Greenfield, Ind.
Douglas E. Givan, Indianapolis
Kelly L. Gelarden, Hawesville, Ky.
James A. Finley, Indianapolis, Ind.
Michael G. Brown, Indianapolis, Ind.

ALPHA THETA CHI (19)

Terrence L. Derr, Grand Island
James O. Howe III, Papillion, Neb.
Mark S. Mullet, Superior, Neb.
Curtis L. Tideman, Hartington
Dennis D. Pierce, Verdigr, Neb.
Victor J. Johns, Nebraska City, Neb.
Gregory S. Foley, Tyndall, S. D.
David T. Miller, Lincoln, Neb.
Mark O. Neumeister, Lincoln
Dale L. Kovanda, Verdigr, Neb.
Steven D. Chonis, Omaha, Neb.
Steven E. Vlach, Hartington, Neb.
Mark S. Watmore, Geneva, Neb.
Mylo E. Groen, Holdrege, Neb.
John J. Velasquez, Papillion, Neb.
William D. Kelley, Beatrice, Neb.
Steven F. Brettmann, Hebron, Neb.
Michael D. Hindmarsh, Dearborn Heights, Mi.
James J. Horgan, Omaha, Neb.

PLEDGES

DEC. 29, 1978-MARCH 26, 1979

MU (7)

Alan Portanova, Stamford, Ct.
Mike Chaves, Colonia, NJ
Chris Malone, Floral Park, NJ
Chris Garone, Elmout, NY
Rick Stam, San Jose, Costa Rica
Mike Sori, Wallington, NJ
Joe Ward, Gibbsstown, NJ

XI (12)

David L. Carey, Island Park, NY
Brian Cullinan, N. Conway, NH
James C. Georgaklis, Brookline, Ma.
James T. Hintlian, Winchester, Ma.
Stevan R. Hubbard, Lincoln, Neb.
Gregory M. Kneue, Cincinnati
Robert K. Marchand, Wilbraham, Ma.
Owen J. McGettrick, Hampden, Ma.
Geoffrey B. Morris, Endwell, NY
David S. Post, Wachtung, NJ
Peter A. Sanborn, Endwell, NY
Douglas Stone, Berkeley Heights, NJ

PI (2)

Theodore R. Papenthien, Mequon, Wis.
Kraig D. White, St. Louis, Mo.

RHO (28)

Roland T. Addis, III, Essex Falls, NJ
Jefferson H. Akins, Basking Ridge, NJ
Eric W. Badmann, Philadelphia
Thomas J. Barlow, Lawrenceville, NJ
William F. Barner, Burlington, NJ
Alexander Blanchet, Morris Plains, NJ
Emil C. Casciano, Newton, NJ
Kenneth L. Cundari, Pleasantville, NY
Stanley R. Dean, Shawnee Mission, Mo.
David S. Fisher, Montville, NJ
Patrick J. Fletcher, Rutherford, NJ
Robert D. Graney, Belmar, NJ
William S. Green, Easton, Pa.
Joseph H. Hartmann, Gibbsboro, NJ
Harry V. Keefe, Greenwich, Ct.
Lewis J. Korngut, Cranford, NJ
John R. Krissinger, Lancaster, Pa.
Timothy L. Lampkin, Maplewood, NJ
Eugene Malinquist, Digmans Ferry, Pa.
John A. Marr, Little Silver, NJ
Douglas H. Oberkircher, Paoli, Pa.
Mark B. Peterson, Garden City, NY
Glenn R. Pierce, Plymouth Meeting, Pa.
David M. Prown, Orange, Ct.
Eric P. Reichenbach, White Plains, Pa.
Peter M. Sullivan, Ridgewood, NJ
John L. Ventura, Framingham, Ma.
Bryan J. White, Rio Grande, NJ

ALPHA-CHI (2)

Paul Clive, New York, NY
Larry Snipes, Willard, Ohio.

GAMMA DELTA (4)

Paul Stearns, Minneapolis, Mn.
Ezzaldin Abusteit, Cairo, Egypt
Dennis Goncyl, Plymouth, Mn.
Tim Hanna, Green Bay, Wis.

EPSILON DELTA (2)

Dan High, Toledo, Or.
John Wiesense, Portland, Or.

THETA DELTA (8)

James P. Dwyer, Jr., Orange City
Brian P. Andrew, Fern Park, Fla.
Brian S. Beale, Springfield, Va.
Kenneth A. Mizels, Miami Beach
Jim Tipton, Maitland, Fla.
William A. Bramley, Englewood
Robert J. Muller, Pompano Beach, Fla.
Alan Mangan, Bethlehem, Pa.

IOTA DELTA (6)

Michael L. Haskett, Muncie, Ind.
Mark R. Carroll, Indianapolis, Ind.
William E. Eck, Morocco, Ind.
David K. Dobbieri, Indianapolis
Thomas Warner, North Vernon
Steven R. Green, North Vernon,

OMICRON DELTA (2)

Kevin S. Wilkins, Mishawaka, Ind.
Robert H. Griffin Jr., Cincinnati,

PI DELTA (7)

Dennis M. Deem
Donald T. Murray
J. Wesley Bryan
George W. McIntosh
Carl W. Lehmkuhl
William H. Siamens Jr.
James P. Campbell

NU DELTA (5)

Matthew C. Bryant, Tallahassee, Fla.
Michael G. Callas, Hagerstown, Md.
Michael C. Evans, Miami, Fla.
Raul F. Palenzuela, Miami, Fla.
James H. Gaunt, Lynn Haven, Fla.

SIGMA DELTA (5)

Frank D. Adams, San Diego, Ca.
Paul A. Meyerherhoff, Hayward, Ca.
Stephen A. Fleming, Pt. Richmond, Ca.
Gregory F. Hirth, Richmond, Ca.
Ernest D. Faitos, Santa Cruz, Ca.

PHI DELTA (6)

Alexander W. Green, Teaneck, NJ
Vincent C. Ramoneda, New Orleans, La.
Thomas G. Alexander, Knoxville
Michael J. Alperi, Pittsburgh, Pa.
Barry R. Duncan, Lake City, Tenn.
Charles E. Oldham, Jr., Lake City

CHI DELTA (2)

Scott A. Whitaker, Stone Mountain, Ga.
David M. Ingram, Atlanta, Ga.

PSI DELTA (12)

Hubert R. Broome Jr., Mt. Holly
Charles D. Bryant II, Raleigh, NC
Barry L. Lentz, Kannapolis, NC
Gregory D. James, Clayton, NC
Dennis D. Savage, Winston-Salem, NC
Stephen C. Barnes, Matthews, NC
William D. VanSickle, Blairstown, NJ
Robert E. Lanier, Charlotte, NC
William S. Kenyon Jr., Charlotte
Daniel E. Trull, Greensboro, NC
Bruce R. Keith, Furlong, Pa.
Raphnel F. Staples Jr., Burlington,

ALPHA ZETA (5)

James A. Webster, Rossville, Ga.
Julius T. Hollingshed Jr., Kennesaw, Ga.
Gregg S. Davis, Kennesaw, Ga.
Robert D. Frisbee, Marietta, Ga.
James L. Boggs, Marietta, Ga.

BETA ZETA (9)

Jorge C. Figueroa, Fern Park, Fla.
Walter J. Beaton, Stuart, Fla.
Gary C. Richards, Palm Bay, Fla.
William B. Goss, Orlando, Fla.
Jorge H. Toledo, Orlando, Fla.
Kenneth E. Conerly Jr., Sarasota
Darell T. Waller, DeLand, Fla.
Richard K. Buchanan, Winter Springs, Fla.
Walter A. Johnson, Kissimmee, Fla.

GAMMA ZETA (7)

William E. Barefoot, Wilmington
Robert G. Elmore, Pink Hill, NC
William B. Gentry, Charol, SC
Robert A. Hass, Virginia Beach
Steven J. Suggs, Fayetteville, NC
Walter Glenn Cooper, Wilmington, NC
Walter B. Hinkamp Jr., Fayetteville, NC

ZETA—Franklin & Marshall

Clinton E. Crane '65
Daniel G. Ficks '57
Andrew Konrad '54
Oliver D. Marcks '19
William D. Mitchelson '52

ETA—Georgia

William Akers Jr. '40
Peter A. Amann '58
Robert M. Ammons '16
F. Phinizy Calhoun Jr. '32
James A. Carder '52
Edmond D. Carrell III '62
George R. Giles Jr. '66
Robert D. Hill '27
F. C. Hunter '28 A'28
Andrew E. Neighbors '67
Joseph B. Neighbors III '64
Scott W. Offen '71
James P. Parker '71
Albert M. Pickett '63
William J. Rodgers '38
James H. Shepherd Jr. '73
Hughes Spalding Jr. '41
Lamar Swift '36
James P. Walker Jr. '60
Furman G. Wall Jr. '66

THETA—Rensselaer

Philippe Auger '61
Richard C. Bowman Jr. '54
Stephen A. Fraser '70
Clarence M. Holdgon '21
Robert C. Kluthe '54
Ronald S. Lachut '71
H. Donald Lafford '57
Paul G. Tait '29

IOTA—Ohio State

David R. Alexander '72
Jesse B. Blumenstiel '27
Vincent Bolling Jr. '55
Frank S. Cumiskey '37
John Donnelly III '59
Thomas W. Guinther '73
Cornell C. Hunter '43
Sidney Del. Jackson Jr. '23
Edward F. Jeffers '66
Ralph L. Lonius '24

THE CHI PHI CHAKETT FOR MAY 1979

SIGMA DELTA (9)

Michael E. Grenley, Piedmont,
Chris R. Wallner, Menlo Park, Ca.
Kurt V. Anderson, Hayward, Ca.
Gerald S. Chong, Travis AFB, Ca.
Lawrence V. Waltz, San Jose, Ca.
Paul L. Salloni
Roland K. Perkins
Kenneth G. Iritani, Bakersfield,
Leland M. Crawford, Santa Barbara, Ca.

CHI DELTA (2)

Robert D. Frisbee, Marietta, Ga.
Jeffery Johnson, Catsersville, Ga.

PSI DELTA (11)

Brad Johnston, Concord, NC
Bruce Johnston, Concord, NC
David Matthews, Burkley Heights, NJ
Tommy Moore, Burlington, NC
Bob Kirby, Matthews, NC
Johnny Johnson, Laurinburg, NC
Dan Holland, Raleigh, NC
Mike Mullally, Mooresville, NC
Dusty Hodges, Charlotte, NC
Bryan Harris, Rural Hall, NC
Kerry Yow, Lewisville, NC

ALPHA ZETA (11)

Ronnie Payton, Summerville, Ga.
Eric Gable, Sandy Springs, Ga.
Robert Kurshner, Sandy Springs
Joey Maxwell, Atlanta, Ga.
Ken Sloan, Atlanta, Ga.
Kevin VanHook, Warner Robins
Jeffrey B. Hatfield, Rossville, Ga.
Steven E. Walker, Columbus, Ga.
Robert K. Shepard, Trenton, Ga.
Jeffery Trussell Johnson, Cartersville, Ga.
Monty Dale Long, Kennesaw, Ga.

Chi Phi Prospects? Send Details to National!

Over 1600 Pay Dues!

VOLUNTARY SUPPORT RECEIVED JAN. 1-MAR. 31, 1979

ALPHA—Virginia

Harry Burks Jr. '21 B'24
Albert D. Ernest Jr. '54
J. Malcolm Firth Jr. '37
W. Cabell Fitzpatrick Jr. '63
F. Berkeley Robins '23 B'23
Richard B. Ross '53
Robert Rutherford Jr. '65
Frank D. Thompson Jr. '46
Gulfurd D. Ware '50

BETA—MIT

John L. Allen '54
Leo J. Feuer '43
Richard I. Johnson '56
Kenneth King Jr. '52
Frederick D. McCauley Jr. '51
Foster N. Perry '23
Arthur C. Powell II '43
Andrew W. Wendling '54

GAMMA—Emory

Dr. Edwin W. Allen Jr. '43
James B. Brown Jr. '53
William M. Cothran '68
H. P. Edmond Jr. '44 H'47
J. Baxter Gentry Sr. '27
Dr. Paul Gilreath III '59
Dr. Thomas S. Harbin '37
H. Christopher Keown '74
John S. Kirkland Jr. '66
Roger H. Lawson Jr. '63
Thomas Marshall Jr. '40 H'48
Alonso L. McDonald Jr. '49
Donald L. Mize '69
William H. Odum III '63
W. K. Parks '26
Crawford Raitwater '37
Richard W. Taylor '61
John R. Turman '29

MU—Stevens Tech.

Kevin J. Bernard '66
Robert Budell '44
Robert J. Harkins Jr. '77
Richard P. Moon '65
Mark Niensadt '80
William F. Slattery '75
Robert W. Welti '43

XI—Cornell

Scott E. Amett '71
John L. Collyer '17
John P. Richardson '37
Edwin J. Fitzpatrick '32
James C. Forbes '36
Henry S. Fraser '26
George B. Hoelt '50
Edward M. Hutchinson '36
Ralph R. Kingsley Jr. '32 Z'34
Edward E. Lewis '49
N. Rich Lindquist '68
Richard P. Taylor '50 A'50
W. Barlow Ware '47

DELTA—Rutgers

Charles E. Baum Jr. '65
James R. Dvorin '66
Robert B. Gill '53 Psi'53
Arthur M. Goldberg '63
Horace J. Greeley Jr. '53
Thomas Hollinger Jr. '60
Franklin J. Marmott '25
Stephen D. Martin '69
W. D. Parker '32
Richard A. Popp '39
Robert A. P. Sesse '48

EPSILON—Hampden-Sydney

C. Wilson Batten '22
Stephen D. Beck '67
James D. Christian '40
Paul W. Davidson '28
S. Hardy Duerson Jr. '64
Carl A. Foster '73
C. Randolph Hudgins Jr. '47
James D. Ireland '35

ZETA—Franklin & Marshall

Daniel G. Ficks '57
Andrew Konrad '54
Oliver D. Marcks '19
William D. Mitchelson '52

ETA—Alabama

Dr. Samuel M. Day '34
Jerry D. Ingram '76
E. Joseph Kane IV '56
Jamie F. Rainer Jr. '45
J. Robert Redner '59
Frank S. Skinner Jr. '65

PHI—Amherst

Harry W. Cole '15
Charles B. McGowan '17
Thomas J. O'Connor Jr. '47
Richard N. Podell '64
Emil B. Voelcker '22

PSI—Lehigh

Thompson Chandler '29
George N. Ewing '22
Chester L. Finch Jr. '43
Thomas M. Hamill '39
Frank C. Hastings '67
Robert J. Olsen '64
Robert A. Orben '58
William E. Seip '52
John A. Waterman '28

OMEGA—Georgia Tech.

Tazwell L. Anderson Jr. '60
Milton W. Arnold '28
C. William Brown '57
Schuyler W. Clark '33 H'34
Charles J. Currie Jr. '49 G'50
Charles DuBose '29
Robert T. Engel '61
Edward A. English '67
Peter A. Harley '51
M. Edward Hiles '59
E. Russell Holladay '57
Julian C. Jett Jr. '67
Daniel M. Kennedy '49
Jack Lawler '52
Charles S. Northern Jr. '24

George J. Mathey '49

Harold O. Platter '25
Charles G. Stewart '23
Michael D. Stoner '77
Paul R. Strubing '78
Gene A. Walton '61
Albert P. Whitaker II '33
Frederick B. Woolary '48

KAPPA—Wisconsin

Adelbert L. Bertschy '50
William L. Duncanson '73
Stephen E. Freeman '31
James C. Huber '50
Charles J. Kallewang '41 A:X'41
Edward Rogan II '65
Timothy J. Wipperman '70

LAMBDA—California

Jeffrey R. Dunstan '67
Richard C. Ham '33
Waltorn M. Lawrence '44
Joseph A. Moore Jr. '29
John E. Pearson '43
Earl T. Riley III '56
John VanRiper '41
Edward I. White '56

MU—Stevens Tech.

Kevin J. Bernard '66
Robert Budell '44
Robert J. Harkins Jr. '77
Richard P. Moon '65
Mark Niensadt '80
William F. Slattery '75
Robert W. Welti '43

XI—Cornell

Scott E. Amett '71
John L. Collyer '17
John P. Richardson '37
Edwin J. Fitzpatrick '32
James C. Forbes '36
Henry S. Fraser '26
George B. Hoelt '50
Edward M. Hutchinson '36
Ralph R. Kingsley Jr. '32 Z'34
Edward E. Lewis '49
N. Rich Lindquist '68
Richard P. Taylor '50 A'50
W. Barlow Ware '47

PI—Northwestern

Peter J. Bolger '76
Edwin O. Bradley '68
Robert P. Christopher '54 A-T'54
Robert W. Venables '63

RHO—Lafayette

Henry A. Cobough Jr. '46
Richard M. Contel '70
William W. Curtis Jr. '49
John H. Dillon II '63
Herbert E. Dobbs '34
Ronald S. Hummel '58
Walter D. Macht '40
Harrison McAlpine Jr. '51
Michael J. Salter '58
George O. Savino '67
Donald R. Sellers '66
Charles T. Siebert Jr. '18
William W. Spalding '72

TAU—Alabama

Dr. Samuel M. Day '34
Jerry D. Ingram '76
E. Joseph Kane IV '56
Jamie F. Rainer Jr. '45
J. Robert Redner '59
Frank S. Skinner Jr. '65

PHI—Amherst

Harry W. Cole '15
Charles B. McGowan '17
Thomas J. O'Connor Jr. '47
Richard N. Podell '64
Emil B. Voelcker '22

PSI—Lehigh

Thompson Chandler '29
George N. Ewing '22
Chester L. Finch Jr. '43
Thomas M. Hamill '39
Frank C. Hastings '67
Robert J. Olsen '64
Robert A. Orben '58
William E. Seip '52
John A. Waterman '28

OMEGA—Georgia Tech.

Tazwell L. Anderson Jr. '60
Milton W. Arnold '28
C. William Brown '57
Schuyler W. Clark '33 H'34
Charles J. Currie Jr. '49 G'50
Charles DuBose '29
Robert T. Engel '61
Edward A. English '67
Peter A. Harley '51
M. Edward Hiles '59
E. Russell Holladay '57
Julian C. Jett Jr. '67
Daniel M. Kennedy '49
Jack Lawler '52
Charles S. Northern Jr. '24

Paul M. Potter Jr. '39

William W. Ranck '61
Herbert C. Skinner Jr. '59
Samuel L. Strickland '70
Lawrence A. Willis '67

ALPHA-ALPHA—UNC

James M. Alexander '45
David R. Badger '69
Daniel M. Bell '64
Herman A. Cole Jr. '60
Hugh M. Dorsey III '69
Isaac M. Huske '64
William M. Kean '50
Robert R. Mauldin '59
Charlie S. Nelson '42
A. Gregory Peeler Jr. '31
Ralph M. Potter '59
Richard H. Smith '59
Creig J. Soeder '75
Gary R. Stafford '73

ALPHA-TAU—Michigan

John Allwood III '51
Michael A. Arent '58
Dale P. Armstrong '55
Clement R. Aronson Jr. '52
Daniel A. Arsulowicz '68
Bruce W. Avis '57
John R. Ball '48
William A. Bush '72
Scott B. Crooks '65
M. Robert Deo '29
O'Neil L. Dillon '35
John S. Flintosh '59
John F. Foley '53
C. B. Johnson '38
Robert W. Kreps '68
Michael E. Medvec '77
Albert M. Post '31
John P. Richardson '37

Special logo
was designed by
Sid Goode, Ome 80

CHI PHI CONGRESS

atlanta
AUGUST 1978

Continued from Front Page

housed in dormitories during the Congress, most conveniently because the Omega Chapter House is the closest to campus of any fraternity.

Omega was started as a colony. Beginning after the 1902 Congress authorized it, several Tech students were initiated annually at other chapters, until in 1904 there were eight Chi Phis enrolled, including a transfer from Emory. Charter was granted in June.

Thus Omega will have just begun its Diamond Jubilee Year by Congress.

A Word about Tech

Georgia School of Technology, now Georgia Institute of Technology, was opened near downtown Atlanta in 1888. The original 128—enrolled for bachelor's degree studies in mechanical engineering—now have grown to 10,000, studying for degrees in 30 major fields.

Tech has much to boast of, including the fact that it has the largest number of National Merit Scholars compared to enrollment of any publicly supported institution in the country. It is the South's largest industrial and engineering research agency.

Delta Revives Dinner June 1

Finances and fellowship will both get stress when Delta revives its annual alumni dinner on June 1, to be held at Pinehurst at 7 p.m., \$15 per person with wives invited.

So announces James B. Smith D '64, dinner chairman in a letter to alumni.

Chi Phi brothers in the past benefited from the low mortgage payments which always existed on the chapter house, but now the House has fallen into some disrepair and has come upon a financial crisis. Alumni help is a necessity.

Second Class Postage Paid at
Atlanta, Ga. 30326, and
Additional Mailing Office

NOTICE TO PARENTS: When your son leaves college, this paper is sent to your address until we receive his new address. If he is not living at home, please send his current permanent address to: Chi Phi, 3400 Peachtree Rd. NE, Suite 1041, Atlanta, Ga. 30326.

POSTMASTER: Please send form 3579 for undeliverable copies to Chi Phi Fraternity, 3400 Peachtree Road, N.E. Suite 1041, Atlanta, Georgia 30326

THE
CHI
PHI

VOLUME 64, NUMBER 2
MAY 1979

Omega's 75th Anniversary Party

Fri., Oct. 19, Piedmont Driving Club, Atlanta

for Alumni and Friends of Omega Chapter

Dinner, 8 p.m., followed by Band—\$45 per couple

Oct. 20—Chapter Open House before and after Auburn game

Reservations: Freeman Strickland, 404/377-0144

528 Church Street, Decatur, Georgia

Eta SE Basketball Winner; A-A Is 2d

by J. Kenneth Morgan G'71

For the second year in a row the University of Georgia was the winner over the University of North Carolina in the Chi Phi Southeastern Basketball Tournament held February 24-25 in Atlanta.

Georgia never trailed in the game, leading 33-18 at the half and winning by a convincing 64-48 margin. North Carolina played well, but was unable to stop Georgia's outside shooting and control of the boards.

David Hatch of Georgia was the MVP again this year scoring 17 points in the championship game and averaging 20 points per game in the tournament. Also, Senour Reed, 15, and Bruce Miller, 12, helped Georgia dominate the boards. North Carolina was led by Steve Cella with 17 points and Rick Procter with 14.

In the consolation game, the University of North Carolina—Charlotte captured third place, squeaking by the University of Alabama 41-40. The score was tied at the end of the first period 14-14 and at the half 22-22. Steve Dobson of Alabama was the top scorer with 14 points. Bill Dubose and Mike Spry, both from UNCC, each had 10 points.

This was the 15th annual tournament sponsored by the Georgia Chi Phi Alumni Association. I'm sure the



Eta's Southeastern Winners!

chapters join me in thanking the Alumni who support the Association and make this annual event possible.

A total of 14 teams entered;

Alpha, Virginia; Gamma, Emory; Epsilon, Hampden-Sydney; Eta, Georgia; Omega, Georgia Tech; Tau, Alabama; Alpha-Alpha, North Carolina;

Alpha Zeta, West Georgia; Chi Delta, Georgia State; Iota Delta, Indiana; Nu Delta, Florida State; Phi Delta, Tennessee; Psi Delta, UNC Charlotte; Rho Delta, Oglethorpe.

Gamma, Eta, Rush Well Because They Know . . .

For Rush Success, Organize

Careful, detailed organization is the key to successful Rush, say alumni advisors of two chapters—Emory and Georgia—which are legendary in Chi Phi circles for their consistency in having top-notch pledge classes.

Mike Aycock G 69 and Peter Amann H 68 are both in their early 30s and both work closely with their chapters. Other dedicated alumni preceded them.

The schools are entirely different, though both in Georgia. Emory is a private church related university, which draws students from all over the country, while Georgia is a typical state university—mostly in-state students.

So the mechanics of their rush efforts are different, but the principles are the same, and so are the results. The news item herewith shows both Emory and Georgia among that minority of Chi Phi chapters—15 of 42—who substantially made their rush quotas.

Alumni Assistance a Must . . .

Georgia tends to have large parties, too

15 Chapters Meet Pledging Goals

National's pledging goals for chapters, designed to help them operate their facilities comfortably with adequate income, are generally higher than the actual pledging reported during the four school years 1974-1978.

Below are the chapters who are within 15% of their goals, and thus have "met" them from a practical standpoint, with total number of pledges taken during the four years, and in parentheses National's pledge objectives for a single year.

Beta, MIT—59 in four years (15 per year).

Alpha Delta, Penn State—89 (20).

Rho, Lafayette—79 (20).

Zeta, Franklin & Marshall—104 (25).

Kappa, Wisconsin—79 (20).

Epsilon Delta, Oregon State—91 (25).

Sigma Delta, U. Calif. Davis—54 (15).

Alpha—Virginia—52 (15).

Alpha-Alpha, Univ. of North Carolina—87 (25).

Psi Delta, UNC-Charlotte—82 (20).

Tau, Alabama—88 (25).

Theta Delta, Florida—170 (40).

Eta, Georgia—106 (25).

Gamma, Emory—96 (25).

Rho Delta, Oglethorpe—53 (15).

big to use the homes of alumni. But they solicit recommendations from alumni and at least 80% of all prospective members recommended get looked at by the chapter, says Amann.

In contrast, Emory, with its smaller enrollment, spread out in many states, tends toward small summer parties held in the homes of alumni around the pool. Locations are determined by cataloguing where entering freshmen are coming from, a list available in early Spring.

Emory expects the actives who are not in school during the summer to arrange these parties, and it also expects the Rush Chairman and his crew to attend the parties wherever they are.

Georgia expects all actives to attend all rush functions, and there are fines if they don't. Says Amann: "Our parties are bigger, because we will have most of our actives there, too."

Both Georgia and Emory operate Spring rush. At Emory it is structured into three weekends, and during one of them, the prospects stay in the House. At Georgia, actives are alerted to look in their home towns for prospects, and 50-60 annually show up for their Spring weekend.

Rush Chairman Vital Need . . .

The Rush Chairman himself is an essential ingredient in Rush.

He must be the kind of man who can involve all the Actives in the rush effort, using their abilities and talents to the maximum.

If the Rush is managed well, both Emory and Georgia will have 10 or so of their goal of 25-pledges well sold before the formal rush ever begins.

What About Your School?

While Emory and Georgia are among the oldest and best established of Chi Phi chapters, what they do is basically no different except in mechanics from what all chapters should do.

First, organize—and organize just as thoroughly as you possibly can, knowing full well that Murphy's Law will make sure that not everything happens as you planned it.

Second, select the best man you have as Rush Chairman, and support him financially as strongly as possible.

Third, make friends. The entering freshman or the transferring junior both are interested in friendship, and your brothers must reflect that to them.

Sigma – Open Again in '81

by J. Stephen Beckett, Vice President
Sigma of Chi Phi Memorial

Sigma Chapter, troubled by financial difficulties in recent years, suffered a historic reversal when, on August 22, 1978, the chapter house doors were officially closed. The chapter house at 303 East Chalmers, Champaign, Illinois, was sold to IlliDell, a local cooperative fraternity.

Sigma's closing came only after the thwarted but valiant efforts of the Sigma Memorial Board to utilize all feasible alternatives.

In 1976 and 1977, Sigma Memorial put together a reconstruction, repair and remodeling proposal to refurbish the chapter house and pay off all existing debts. Financing for the project could not be obtained, however.

As part of the sale, Sigma Memorial took a mortgage against the property in the sum of \$125,000 which bears interest at the rate of 9% and which must be paid off in full in March of 1981.

With the monthly payments on this mortgage Sigma Memorial is now in a financial position to sponsor alumni activities and prepare for the availability of substantial monies in 1981 to recolonize the University of Illinois campus.

The Sigmagram, the alumni newsletter, is again being published quarterly. A summer alumni gathering in Chicago is planned, as well as a get together in Champaign at homecoming.

In the meantime, the house's charter, all of the historic documents and ritual items have been placed in storage. Looking for help from the National Chi Phi organization, with the promise of solid finances behind them, the Sigma of Chi Phi Memorial Board looks forward to the spring of 1981 when concrete plans for recolonization will be carried forward.

Chi Phi Seeks \$100,000 Funding

Chi Phi is seeking 100 alumni to contribute \$1000 each to the Fraternity to get it out of a financial bind and enable it to aid chapters and alumni groups, reports Bill Kitchin A 49, chairman for the crash program.

By April 11, \$12,525 had been received for this National Fund in cash and pledges, with 12 alumni contributing \$1000 each.

"The drive is gathering momentum," says Kitchin, "and we are optimistic in reaching our goal." While \$1000 gifts are the main thrust, smaller amounts will also be gratefully received.

The \$100,000 is needed before June 30, the end of this fiscal year, and will be used as follows:

\$20,000 to pay off current creditors and have some cash to carry the operation.

\$29,500 to pay off a bank debt, thereby relieving the fraternity from the interest obligation, too.

\$23,500 to increase present pension funding of \$16,500 to \$40,000.

\$27,000 for a chapter loan and expansion kitty. Says Kitchin: "We need to support local alumni with matching funds for house improvements, or assist chapters on short-term expansions . . ."

Contributions should be sent to Randy Loos, Executive Secretary, at the National Office, made out to Chi Phi Fraternity National Fund Drive.

G, ThD, Th Are Golfing Winners; PsiD Alum Wins

Seven chapters competed in the one-day 2d Annual Chi Phi Golf Tournament on March 31 conducted in Charlotte by alumni of the Psi Delta Chapter, University of North Carolina, Charlotte.

The team winner was Gamma at Emory—Joe Jenkins and Matt Peters—with a total 165. Theta Delta at Florida was runnerup, with Dale Kincaid and Joe Engle.

Engle won medalist honors on the second hole of "sudden death" after tying with Jenkins and Mark Mooney of Theta at Rensselaer Tech, at 82.

Chris Hodges PsiD alumnus and tournament organizer was winner of the alumni tournament.