

THE  
CHI  
PHI

**C**HAKETT

December 1964

- ▶ Chi Phi's Challenge  
see page 4
- ▶ Educational Trust  
see page 11



Report of the 1964 Congress at Indianapolis



## LET'S TALK IT OVER...

Volume 48

Number 2

December 1964

Congress 1964 . . . . .	1
Chi Phi's Challenge . . . . .	4
Bill Doherty Tells His Story . . . . .	6
On Dartmouth Varsity Squads . . . . .	7
Alpha Alpha Fortieth Reunion . . . . .	9
Sparks Medal Winners . . . . .	10
Educational Trust . . . . .	11
Class of 1964 Reports . . . . .	14
Campus and Alumni Briefs . . . . .	15
Day Is Florida Medical President . . . . .	17
Pledges . . . . .	18
Initiates . . . . .	19
Marriages . . . . .	19
Alumni News . . . . .	19
Births . . . . .	20
In The Service . . . . .	20
Chapter Eternal . . . . .	20
Officers and Roll . . . . .	21

### COVER

Al Hutchinson, Xi '09, past Grand Alpha, Wlyford Jones, Alpha Chi '34, newly appointed Grand Zeta and Grand Alpha-elect Joseph R. Dockery, Xi '28, standing under marquee at Marott Hotel, Indianapolis, site of the 1964 Congress.

**CARL J. GLADFELTER**  
Editor

**L. Z. ROSSER**  
Managing Editor

The Chi Phi Chakett is published in September, December, February, and April by The Chi Phi Fraternity, 3330 Peachtree Road, N.E., Room 550, Atlanta, Georgia 30326. Second class postage paid at Atlanta, Georgia. Subscription rate, \$5.00 per year. Single copies \$1.50.

"TO BE IGNORED, —, is a vastly more damning situation than to be opposed."

Under Dean John L. Blackburn, Dean of Men, a four year Fraternity Evaluation is being conducted at Alabama. The results and recommendation of the second years evaluation team were released by the Dean July 31, 1964.

One statement contained in the committee conclusion stands out as a warning to all fraternity chapters and fraternity men. "To be ignored, to be treated as irrelevant, is a vastly more damning situation than to be opposed. Fraternities at Alabama stand in danger of being irrelevant to the educational process. To become central in educational planning and functioning is the first objective of an enlightened fraternity leadership. This report suggests some ways in which this can be achieved. If the fraternity system can take the leadership in bringing the entire complex of student government and organizations to take responsibility for the campus educational climate, it will be valued and cherished no matter how vigorous the criticisms from outside."

The committee report hazards no guess as to Alabama Fraternities willingness to face the opportunity and challenge. However they direct the way in saying, "We can point to the assets of an enlightened University administration and faculty and a courageous Dean of Men. We can point to the able student leaders who seem stimulated by the opportunity for a creative contribution to the future of their alma mater. We can point to the limitless adaptability of the fraternity idea which is self-determining, voluntary, and completely responsible."

Are our chapters and alumni facing the challenge of being relevant to the educational process? On many campuses yes, but on some, the ostrich-in-the-sand attitude still prevails among some undergraduates and alumni members of the fraternity. Fortunately the dynamic leadership that exists in most chapters plus the developing awareness of the "new" educational climate within which we find ourselves will keep responsible fraternities abreast of the opportunity.

The report refers to enlightened faculty, administration and student leaders. No reference is made to the alumni leaders in fraternity. Certainly the committee is not so naive as to think fraternities, like Chi Phi, who have met every challenge of our times for over 110 years, have not had the benefit of some of the finest minds guiding and supplying mature leadership and continuity.

We think Chi Phi will not be ignored.

# CONGRESS 1964

*Joseph Rice Dockery, Xi '28, elected Grand Alpha  
to take office August 1, 1965*



L to R—Richard Ham, Grand Gamma, Grace Gladfelter, wife of National Director, John Oliver, Chairman Educational Trust, Carl J. Gladfelter, Charles Stoddart, Scholarship Counselor and John Craft, President Indiana Alumni Association.



Russ Guin, A-X'17 immediately after having received the Chi Phi of the year award from the Grand Alpha while Mrs. Joseph R. Dockery, wife of the Grand Alpha-elect, applauds.

CONGRESS, A. F. 140, was officially called to order at 2:00 P.M. September 5, 1964 by Grand Alpha C. Moreland Thomas. The site was the Marott Hotel, Indianapolis, Indiana and the host club and chapter were the Indiana Chi Phi Alumni Association and the University of Indiana chapter, Iota Delta.

The Grand Council held an all day session prior to Congress, and met immediately following Congress to review and authorize procedure and program in accordance with the legislation adopted by Congress.

John Craft, Iota Delta '61 was General Chairman of Congress Committee, and Bob Helt, Iota Delta '64, handled the undergraduate relations and arrangements. Their excellent planning and personal attention to every detail resulted in an outstanding Congress. They were ably supported in their effort by the following Brothers and ladies of Chi Phi: Council Dinner — Mr. and Mrs. Robert E. Secor, Kappa '35, Iota Delta '58, Registration — Mr. and Mrs. Henry L. Bruder, Sigma '38 and William R. Jones, Iota Delta '63, Ticket Sales — James B. Hill, Iota Delta '60, Carmen Della Bella, Delta '49, Joseph V. Goeller, Iota Delta '63, Carl R. Altenhof, Iota Delta '60, Publicity — Mr. and Mrs. Gayl W. Doster, Iota Delta '60, Social Arrangements — Mr. and Mrs. Arthur G. Wupper, Sigma '27, Entertainment — James Myers, Iota Delta '66 and Ronald Werner, Iota Delta '67.

Among the standout features of Congress were two addresses, one by O. D. Roberts, Dean of Men, Purdue University, and a Past President of Kappa Delta Rho; and the other by the Grand Alpha. Other standouts were: the fine entertainment provided by the Windjammers, a trio of Brothers from Iota Delta; Russel Guin's surprise and lack of words when presented the Chi Phi of the Year award; the enjoyable dinner,

# CONGRESS 1964

(Continued from page 1)

hosted by Bob Secor and his lovely wife Betty, for the Council members, out of town guests and their wives; the outstanding manner in which Edward Rogan, Kappa '64 handled the chair while presenting the report of the Constitution Revision Committee; the untiring effort of E. Bates Block, Grand Eta, to see that all of the Constitutional revisions and amendments were properly phrased and legally in order; the diplomatic manner in which Wyford Jones, Alpha-Chi '34 presided as Alpha of Congress; and the beautiful Candlelight Service conducted by Bob Helt and the officers of Iota Delta.

Brother Bernard R. Feick, Jr. of the Psi Chapter summed it all up in a letter following Congress, "I was very much impressed with every phase of the well planned three day conference. I enjoyed meeting and discussing common chapter problems with the delegates and I'm sure that Psi chapter will benefit from many of the ideas and suggestions resulting from discussions at Congress."

## A Report of Congressional Action

### Constitutional Amendments

Congress adopted a number of Constitutional and By-law amendments and additions. Some of the more important changes were:

- Biennial Congresses.
- Biennial Zone meetings with a substantial portion of the expenses to be borne by the Council.
- Defined active status to be: "An active member of a chapter is a brother who has been initiated by or has become affiliated with the chapter and has been paying the prescribed dues. Only active members in good standing may vote in chapter meeting.

A member becomes inactive only upon a 2/3 vote of the chapter.

In the event of a dispute as to whether a member is an active member in good standing, the chapter by majority vote excluding the vote of the member in question, shall decide.

The rights and privileges of an active member shall be determined by each chapter respectively".

- Gave the Council authority to borrow money.
- Adopted new and more equitable voting requirements for election to membership. The vote is now related to the size of the chapter.

### Elections and Appointments

- Joseph Rice Dockery, Xi'28 was elected Grand Alpha to take office August 1, 1965.
- Wyford E. Jones, AX'34 was appointed Grand Zeta to serve until July 31, 1965. He succeeds Brother Dockery who remains on the Council as Grand-Alpha-elect.
- Paul Gaertner, Omega'50 was appointed Council Representative.

### Financial

- Approved a budget of \$59,173 for 1964-65.
- Authorized travel allowances to Congressional delegates in the amount of \$2,236.20.
- Authorized the printing of a new Constitution. Each chapter is required to purchase a minimum of 3 copies at a cost not to exceed \$10 per copy.

### Time and Place of Congress

- Pittsburgh was selected as the site of the 1966 Congress.

### Expansion

- The Council approved the establishment of Colonies at
  - .. Auburn University, Auburn, Alabama, September 1964
  - .. University of Arizona, Tucson, Arizona, September 1964
  - .. West Virginia Wesleyan College, Buckhannon, W. Va., subject to the approval of the administrative committee of the college, presumably on or about October 1, 1964.

## DOCKERY ELECTED GRAND ALPHA

Joseph Rice Dockery, Xi '28 was elected Grand Alpha to take office August 1, 1965. The Grand Alpha Elect is eminently qualified to lead the Fraternity. He has been actively associated with the Council since November 1962 and attended Congress regularly since 1956.

The following item appeared in the February 1963 CHAKETT at the time of his appointment to the office of Grand Zeta, "Joe attended both Mississippi State College and Cornell University,

where he majored in Agriculture. He was initiated into Chi Phi at Cornell and has long been interested in the affairs of the Fraternity. He first attended Congress in 1956 at Old Point Comfort and has since attended Congress every year as a delegate for the Memphis Chi Phi Club. In 1959 he was appointed a Council Representative at Large and served as Alpha of the 1960 Congress in Atlanta. In November, Grand Alpha Oliver appointed him Grand Zeta to fill the vacancy created by the election of Brother C. Moreland Thomas to the office of Grand Alpha-elect. Brother Dockery follows in the footsteps of a long line of Cornell men who actively served Chi Phi as national officers."

Brother Dockery and his wife, Keith, reside at Dockery Farms, Cleveland, Mississippi. The Dockerys have three daughters. Joe is the owner and operator of extensive farms in the Mississippi-Arkansas Delta country.

## WYFORD D. JONES NEW GRAND ZETA

Wyford D. Jones, Alpha-Chi '34 the newly appointed Grand Zeta is Vice-President and General Manager of Properties for the Denison Engineering Company, a division of American Brake Shoe Company.

Brother Jones and his family reside in Delaware, Ohio and he commutes to his Columbus office. He has long been active in the affairs of his chapter and Ohio Wesleyan University, which are located in Delaware. In recent years he has been the chapter advisor, and is highly respected by the members of the chapter, and the Alpha-Chi Alumni Association on which he serves as a member of the executive committee.

Brother Jones is a native of Delaware, Ohio, attended high school there, and matriculated at Ohio Wesleyan University in 1930. Following graduation he associated with Ohio Bell Telephone Company, and later served as sales manager of Harris Mineral Wells, Inc. In 1945 he joined Denison Engineering. He is active in Delaware and Columbus civic and political circles.

He has attended numerous Congresses and was the Alpha of the 1964 Congress in Indianapolis.

### INFORMAL PHOTOGRAPHS

Taken by Arthur Wupper, S'27 During the 1964 Congress.



Bob Secor, K'36 Kappa Alumni Association delegate and Betty Jeckell, wife of the Grand Delta.



Above: THE COUNCIL AT WORK — Charles Stoddart, Ritualistic Counselor, Wyford Jones, Alpha of Congress, Gayl Doster, Treasurer, and John Craft, President, Indiana Alumni Association, John Long, Grand Beta, Joseph R. Dockery, Grand Alpha-elect and Richard Ham, Grand Gamma.

Below: Richard Ham, John Oliver (background), Chairman, Educational Trust, I. B. Countryman, Council-at-Large, Charles Davis, Southern Regional Chairman, Al Hutchinson, Past Grand Alpha, Bill Jeckell, Grand Delta and C. Moreland Thomas, Grand Alpha.



## Vic Smith and Russ Guin Receive Annual Service Awards

THE Chi Phi distinguished service award was presented to two men for the second time since the inception of the award.

Victor Smith Alpha Theta Chi '36 (Univ. of Nebraska) was presented the 1963-64 award at a surprise presentation at the Nebraska Chapter house in November. Russell Guin, Alpha-Chi '19 (Ohio Wesleyan) received his plaque at the Congressional Banquet early in September.

Vic Smith has worked untiringly since 1961 to achieve the return of Chi Phi to the Nebraska campus, and saw a successful climax to his endeavors last April when Alpha Theta Chi was re-chartered. He helped organize alumni interest, made the initial contacts with the University Administration and the I.F.C., negotiated for the property now housing the new chapter, counseled the colonizer and the colony, administered the financial operation of the colony and chapter, and spent countless hours traveling to and from his home in Omaha to Lincoln, to be of whatever assistance he could, to the colony and the chapter.

Brother Smith is married, lives in Omaha, and is Vice-president of the Omaha National Bank. When not helping Chi Phi, Vic and his wife Joyce can be found boating and fishing every weekend from June to October.

It has been traditional not to award annual service awards to any Council member while still actively serving, hence it was only fitting that Russ Guin receive the award long overdue.

Russ led the fund raising effort for the Ohio Wesleyan chapter many years ago when it retired its mortgage. Later he served on the Council from 1952 to 1962.

He has served faithfully when called upon and has been on the Expansion Committee, the Committee to nominate the Grand Alpha, and the Committee to Select a National Director (1960). His counsel has been invaluable and he has regularly attended Congress since 1947.

Brother Guin is president of Interstate Printing, Danville, Illinois, is married and has two married daughters.

# Chi Phi's Challenge

I SHOULD like to discuss with you some observations made by me over a period of years in a vantage point within the academic community. The position of director of alumni affairs at a large educational institution gave me an opportunity to look at fraternities and their relationship with the institution, not as an academician, but through association with all aspects of campus life — the administration, the faculty, the undergraduate and the alumni.

As you are all aware there is a changing fraternity and institutional environment in the nation today. The entire fraternity system is enveloped in a changing climate but as fraternity leaders we have not appeared too sensitive to this change or creative in our adjustment to it. The academic pressure which insists upon student performance is greater each year. We find an acceleration in course load and an increased need for graduate and professional study. The university student of today is more discriminating, and many question the value of membership in a social fraternity and fear it will detract from their academic achievement.

## Environmental Change

This change in environment has caused special problems that tend to operate against a successful fraternity system on the campus today. Some have been thrust upon us by the institutions and others are of our own making. Too many students, particularly at the senior level, are moving out of approved University housing — dormitories and fraternities, and are living in apartments. This has created a vacuum in chapter leadership of upperclassmen and encourages other fraternity men to voluntarily choose an inactive status. Increased admission of upper division and married students and the controlled size of freshmen classes have reduced the percentage ratio of new students interested in a fraternity experience. And we have done too little to interest the others.

We face competition from University owned housing with better facilities, directed social programs, however inade-

quate, and federally financed at longer and lower repayment plans than fraternities can obtain. There is an increased unwillingness by today's student to accept any responsibility beyond academic requirements and they do not wish to participate in fraternity or even any other extracurricular activity. We have increased pressure on our right of selectivity and free association and there is greater institutional administrative control over all aspects of student life. We are at times in full public view and our present day society demands that the behavioral conduct of fraternities be maintained at a high level. With modern communications no incident is apt to go unnoticed, and major incidents bring law enforcement officers and the press to the scene even before the school administrator or appropriate fraternity representative. Society will no longer tolerate promiscuous pranks, disgraceful activities, including hazing, and uncontrolled social events.

Another problem so frequently associated with college fraternities is excessive drinking. One of the great inconsistencies of our modern society is that we apparently approve of the early stages of so many practices but bitterly condemn the end results of those very same things if in our opinion they are in excess. Too many immature college men have decreased their chance of succeeding because they failed to learn the lesson of excess at the proper time.

## Colleges, Not Prisons

Universities must also make a practical and realistic appraisal of their environment. Dr. Edward Eddy, President of Chatham College, had this to say. "Colleges are neither monasteries nor prisons; they are part and parcel of the society in which they operate. They cannot — and they should not — pretend to be societies' answer to the failure of church and home."

What then does Chi Phi mean to you — as an individual, as a chapter or as a national? To me it means exclusiveness, pride and individualism. We are well

aware of the external pressures to do away with national influence and even affiliation. I am confident it has been questioned by some of our undergraduate brothers and even some chapters. The benefits to me are obvious and I have difficulty understanding why they are not so to all. We can list such things as collective strength, structural unity, cultural tradition, mutual benefit from chapter to chapter relations, services from central leadership, world wide fellowship, personal association with kindred spirits and many others. If we were to live alone, isolated from society for the rest of our lives — never leaving the locale of our residence, then these things might not be important to us as individuals. Look around this room. This is the meaning of a nation—men working together from all sections of the country, meetings of alumni around our nation and above all the strength of association to preserve chapter identity and prevent extinction.

## All For Brotherhood

But in a broader sense we have but one reason for being—one common denominator and I fear we must work even harder to maintain it. It is the basis of every fraternity segment. The pure, simple, and unadulterated reason for our personal association—brotherhood. Associate Justice of the United States Supreme Court Tom Clark once said, "Just as sure as education is the guardian of democracy—brotherliness is its keeper." It has many definitions and means different things to each of us. It is over-used, over-simplified and over-worked and most of all I am afraid it is almost forgotten. It is a commitment to like and believe in your fellowman. It is the ability not necessarily to agree but listen and consider others point of view and allow him to hold true personal beliefs that differ. To subject your views to the sense of the majority for the good of the whole so long as you can remain an individual. Your relationship with your fellow man whom you have chosen to associate with on a more personal basis

## *An address to the 1964 Congress by C. Moreland Thomas, Grand Alpha*

than the normal campus acquaintanceships. Are we as individuals and chapters in Chi Phi really concerned with living brotherhood?

I think you may recall with me having heard these words. "Know thou, who as our friend dost kneel within a living circle of our brotherhood, but one thing more is needful to perfect, thy title as a brother in Chi Phi. The words we now shall cause thee to repeat line upon line, embrace the solemn vow that shall, henceforth, bind thee unto us with ties that never shall be rent in twain; Which vow will join thee to a band of friends from whom in hours of sickness as of health, in times of evil fortune as of good, thou shalt not be divided." And in turn a response: "Brothers of the Chi Phi Fraternity do you who have heard this vow, promise on your part ever to hold as a brother — to promote his welfare, to defend his honor, to warn him of danger, to counsel and protect him?"

Do you feel it? Now? Will you remember tomorrow? What efforts does your chapter take to insure a true brotherly feeling, or is it passe' in our current fraternity life. Are your chapter efforts to maintain brotherliness comparable with those expended in behalf of the social program or other campus activities your chapter participates in. Brotherhood is the basic ingredient of your chapter's existence. If you truly develop it, there is no problem that cannot be solved because you will have the strength and courage to work together and get the job done.

"I will admit that the American College has apparently gone overboard in its pursuit of pure excellence. When students can tolerate no longer this exclusive concern for grades, they seek relief and rebellion in personal excess. It may well be time for colleges to take another hard look at the levels of their expectations lest they find themselves in the middle of a genuine moral crisis, which I for one do not believe presently exists. Excellence of character and of moral wisdom in the educated man depends upon a more searching, more challenging, more strenuous collegiate experience

in totality, not just in pure academic work. The principles which call forth allegiance in the academic community at its best are those which also serve to guide the man of character in the world community."

What then is our mission? Are the things we in fraternities cherish worth the fight and effort to retain? In order to survive I believe that fraternities must be responsible for a positive contribution to the educational functions of the University and are under an obligation to promote the personal development of their members — intellectual, moral, physical and social. We in Chi Phi must keep our house in order at all times and be strong in order to survive.

Each chapter must recognize its collective responsibility to its own members, its alumni and the national organization. They must be selective in the men they invite into our membership, keep a flow of freshmen and maintain a size necessary for them to be competitive on their campus. Financial excesses must be avoided, and a reserve should be built up to carry through unexpected crisis.

### **Program of Pledge Training**

We must concentrate on developing an effective program of pledge training. Many of your chapters spend thousands of dollars on a rushing program. How much do you spend to insure these pledges will become an effective member of your chapter. You should maintain a sound social program in accordance with campus regulations. We are a national social fraternity and seldom does a really good chapter have a poor social reputation.

Chapter scholarship is a problem long recognized and debated but progress is slight. We have only ourselves to blame, for at every one of your institutions the entering student each year is better qualified than ever before. At institutions where Chi Phi exists the student admitted has the ability to succeed. We must create a favorable atmosphere and take positive steps to insure individual aca-

ademic achievement by our members.

My greatest criticism of higher education today is the lack of personal counselling given to students. This is an area where our fraternity chapters can effectively fill this gap by developing programs to insure that every member and particularly lower classmen have an opportunity to discuss their scholastic and personal problems with a qualified counsellor. Chapters should take the initiative to insure academic achievement by pledges. Place them on chapter probation before the University does and then make sure he performs to his ability or get rid of him.

Each chapter has a responsibility to the national office and the other chapters collectively. Too often you are lax in financial dealings or processing of records and reports with the National Office. Transfer affiliates are accepted without ever checking with the original chapter and this is a dangerous practice. I would very much like to have each of our chapters appoint a faculty advisor to act as a liaison between the chapter and the University. An interested faculty advisor will give you great assistance with your campus problems. Create an impact on your campus by programs designed to develop a closer chapter-faculty relationship, but do it from an honest conviction and desire. Set annual goals for your chapter and be sure they project a well rounded chapter program. We must strive to be better for the Chi Phi Fraternity can ill afford to tolerate for long a substandard chapter.

### **Challenge of the Future**

What then is Chi Phi's challenge of the future? I believe it is to properly blend into this changing atmosphere of fraternity and University life of today and tomorrow, the traditional brotherhood which has given our fraternity the strength of survival in the long years of our glorious history. And in conclusion I wish to remind each of you that the pride we share in the reputation and meaning of the word Chi Phi are at any given moment only as good as the sum of each of our chapters.

# Bill Doherty, Sigma, Tells His Story



**BILL DOHERTY, Sigma '34** shows his recently published autobiography which includes some of his Illini days.

**B**ILL DOHERTY, Sigma 1934½ has made Journalism his life's work, and with enthusiasm. The Walter Winchell column of June 1, 1964 says of Doherty and his book "Crime Reporter," "the author of 'Crime Reporter,' Bill Doherty, was one of Chicago's top-draw newsmen. One of six brothers whose reportorial gangster-glit-terature will spell-bind not only book readers, but will help educate students at schools of journalism . . . Doherty dedicates his tome to his wife: 'To Marge, my greatest scoop' . . . His publishers flung his original and clever title, 'Scoop D'Jour,' into the wastebasket preferring the trite and banal name, 'Crime Reporter.' Apparently to catch the eye of the eventual paperback population."

Exposition Press, the publisher of the "Crime Reporter," an Autobiography, heralds the work as "The inside story of Chicago crime! Written by a veteran reporter who for twenty-eight years covered virtually every major crime in the Chicago area, these are the stories behind the stories of dark and evil events in the nation's crime capital. Many of these behind-the-scenes happenings are more bizarre than anything the public read in its news-papers. More than once this hard-hitting newspaperman solved a front-page crime himself or uncovered leads that put the police on the right track. And once, on his biggest scoop, he made spectacular headlines himself.

Hundreds of thousands of Chicagoans looked each day for police reporter Bill Doherty's byline over the latest murder story or account of gangland violence. These included some of the goriest deeds in criminal history. Doherty's readers could always depend on a thorough,

graphic, colorful—and above all, factual—account of what had happened in their city.

In 1961, while he was on the *Tribune*, all Chicago knew via every newspaper and every radio and television station that Doherty, in line of duty, had called on a notorious underworld character, that they had wound up slugging each other and that the hoodlum had gunned Doherty out of the house and down the street, vowing to kill both him and his family.

Suddenly Doherty's byline disappeared. So did Doherty. Readers began asking, "What ever happened to Bill Doherty? Did the Syndicate take him for a one-way ride? Did a gun-toting gangster run him out of town? For the answer there was silence.

Now, for the first time, ex-police reporter Doherty reveals what really happened, thereby scoring his latest scoop! "Even my wife, Marge, didn't know," he says. "She'll read it here for the first time."

This remarkable book gives Doherty's first-person story of his life from his days as a cub reporter through his exploits and blood-tingling adventures as a star reporter. The story always took precedence over his personal safety. Along with the more sensational stories that he recounts here went countless hours of often frustrating checking and sleuthing. An instance when his tireless efforts paid off big was the time he uncovered the one witness who could identify William Heirens, the mad killer, who kidnaped a six-year-old girl, dissected her body and deposited the hacked-off parts in various sewers.

These true accounts of Chicago crimes—and the fascinating stories be-

hind them—once more prove that real-life drama is more extraordinary, more engrossing, than any fictional cops-and-crooks thriller seen on the TV screen.

Bill Doherty came by his career naturally. He is one of the six famous Doherty brothers, each of whom is or was a police reporter on a Chicago newspaper. Five of them covered Windy City crime from 1944 to 1955, brother Martin having dropped journalism for the priesthood. The brothers are Frank, Eddie, Martin, Jim, Tom and Bill, the author of this book. Their papers included the *Tribune*, the *Sun*, the *Times*, the *American*, the *Post* and the *Herald and Examiner*. The reporters' father spent forty-six years on the Chicago police force. The Dohertys are in all probability the only family in the world in which six brothers were police reporters in the same city.

His first year classmates and fraternity brothers knew Bill as a budding baseball and football prospect during his pledge year. Bill was assured by the Illinois Varsity Baseball coach that he had varsity first base sewed up and instructed him not to go out for Varsity football the next fall. Incidentally the Illini baseball team had a trip scheduled to Japan. He worked out with the baseball team early in the fall, and as he puts it, "I switched to something warmer—shoulder pads and a leather crash helmet, the same type Red Grange wore a few seasons before. The first day of football practice I got clipped trying to run down a pass interceptor. That ended my athletic career. I did get my "34" in freshman football, but my collapsible knee prevents me from engaging in serious athletic competition now.

So I switched from the Physical Ed



# Chi Phis on Dartmouth Varsity Squads

By JAMES R. HOWE, Zeta, Chi Chapter

CHI prides itself on the diversity of individual interests represented in the brotherhood. It is not surprising, therefore, to find Chi Phis in key positions on several of the Dartmouth varsity squads. This year Chi is represented by eight brothers on five Dartmouth teams. These men have all been outstanding performers in all phases of campus life, as well as in athletics, and expectations run high for them in the coming year.

Murph Cohon '65 finds time away from the duties of the Alpha to play varsity Lacrosse. This 6', 185 pound senior is from West Hartford, Connecticut. Normally mild-mannered and easy-

---

school to Journalism. I made Journalism my life's work on leaving the campus, as my book relates.

I put in 28 years of chasing fire engines and homicide squad cars for the Chicago *Sun-Times* and the Chicago *Tribune*.

I have a boy, Billy, 17, who will graduate with honors from Downey, California High School next spring. He is quite a swimmer, and he is headed for the University of Southern California. You may be sure I plan to get him enrolled at the beautiful, new Chi Phi house in Los Angeles.

My wife, Marge, is a Chicago sorority girl. We will celebrate our 27th wedding anniversary in November. We also have a daughter, Kathy, 15, who attends Pius X High School in Downey.

Right now I am doing free-lance publicity work in the Los Angeles area. I would certainly love to hear from some of my Chi Phi buddies around the country again. It's only a couple of years since I left the midwest, but it seems a long, long time."

going, he displays a ferocious tenacity on the field at crease attack. His first love is the outdoors, being an ardent hunter and fisherman. On campus he is a member of Bait and Bullet and the Dartmouth Undergraduate Council. An English major, Murph hopes to teach English abroad, after graduation.

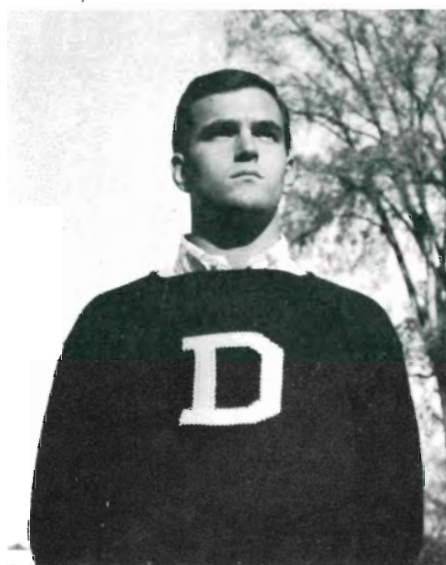
T. J. Love '65 is the Beta and rush chairman of Chi. At 6'2", 180 pounds, he is the leading broad jumper on the Dartmouth track squad and a two-year letterman. He is an English major. T. J. and his wife, Ginger, have an interesting avocation which T. J. hopes to pursue fulltime after graduation. They are interested in the poetry found on certain types of Mayan ceremonial pottery.

Rod Chayer '66 is a junior pledge from Blehmen, Ontario. This 6'4", 200 pounder is the center for the basketball squad. Often billed as a "doubtful starter" last year, big things are expected of Rod this year. He is interested in various phases of engineering science and has received a grant to work with several engineers in the Hanover on a research project in environmental engineering. He is active in debating and is a member of Crossed Swords, a local debating honor society.

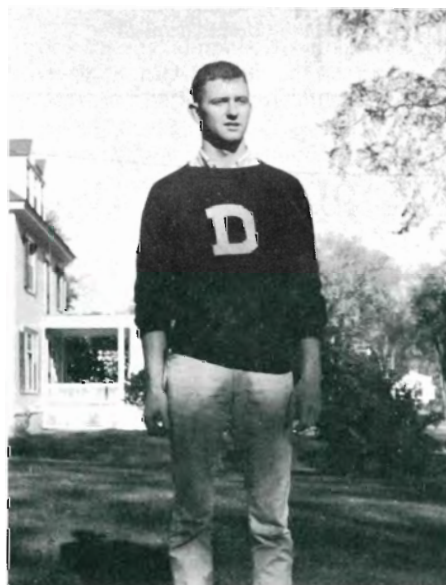
Wally Buschmann '66 a 6'3", 225 pound junior from Lewiston, Maine is the top man in the unlimited class on the wrestling team. Wally's interests center on student government and other aspects of athletics. He is an active sailor, skier, and skindiver. In addition, he holds down the tough offensive center slot in the Chi football lineup. Wally is a history major and plans to enter the Protestant ministry after graduation.

Ted Bracken '65 at 6', 205 pounds is a consistently outstanding performer at left guard on the football team. In the 1963 season he was twice named to the weekly All East Football Team. He is a

## CHI'S SENIOR LETTERMEN

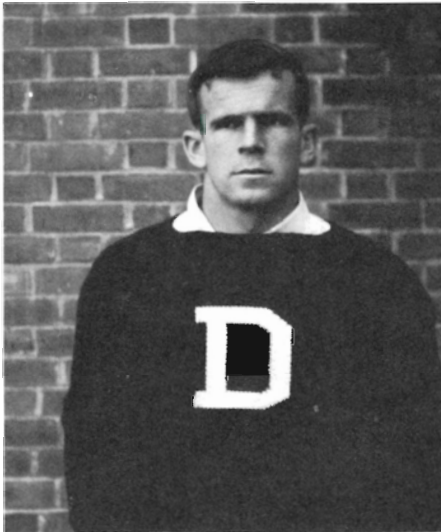


J. Donald Cohon, West Hartford, Conn.  
(Lacrosse)



T. J. Love, Lewiston, Maine (Track)

## SENIOR LETTERMEN



Ted Bracken, Natick, Mass.  
(Football and Rugby)



Robert Koury, Atlantic City, N. J.  
(Football and Lacrosse)

## On Dartmouth Varsities

(Continued from page 7)

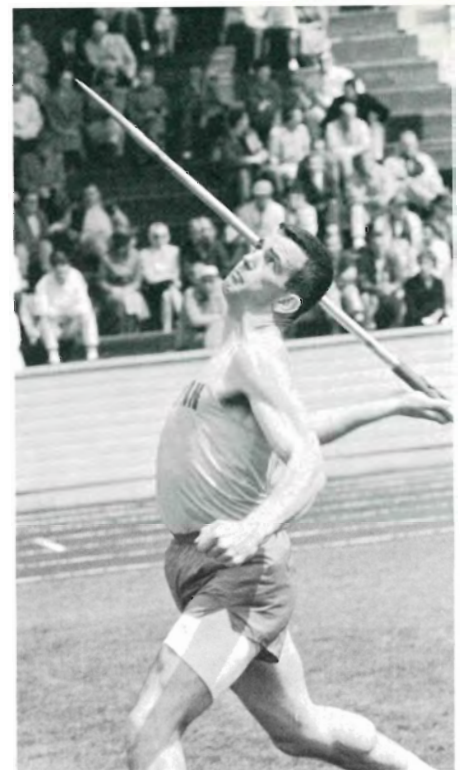
member of the Undergraduate Council Judiciary Committee and Dragon, a senior honor society. He also plays Rugby and traveled with the team to Germany last spring. Ted is a sociology major and recently won the Edith prize for his study in sociological interactions. He plans to go into business.

Bob Koury '65 is the 6'1", 205 pound center on the football team and plays Lacrosse in the spring. He is Chi's pledge master, receiving his training in the Marine Corps PLC program. Bob enjoys skiing on both water and snow. He is an economics major and will enter business after his tour of duty with the Marines.

Edgar Holley '66 is another two-sport man. He plays middle line backer for the Savages, the Dartmouth defensive football unit. In addition, he has nearly broken Dartmouth records in several track events. Ed is an avid auto racing fan from Maywood, Illinois. Everything about his 6', 190 pound frame gives an impression of speed. He is a sociology major, interested in a career in law.

Alan Anderson '66 from Dixon, California plays defense for the Lacrosse squad. His build, at 5'6", 180 pounds, can be deceptive out on the field. Andy is a Dean's list scholar in international relations. Much of his spare time is devoted to international problems and philately. He has also taken on the difficult job of training Chi's new house dog, Stelewol. He hopes to enter the U.S. Foreign Service after graduation.

JAMES R. HOWE, Zeta  
Chi Chapter



Les Tipton, member of 1964 U. S. Olympic Team, shows class before home crowd.

### Olympic Star

## Oregon's Les Tipton Throws Javelin

Les Tipton, Tau Delta '64 is a charter member of the University of Oregon chapter, and actively worked to build the new chapter while constantly persuading his track career. He served as a chapter officer and was also co-rush chairman.

Les is a big man, at 22, he is 6'4" and weighs 210 lbs. He lettered three times and was on both the 1962 and 1964 NCAA Championship Trackteams.

He will represent the U. S. team in the Javelin event. His best cast this year was 263'1½", and is one of the best made by an American this year. He won the 1964 NCAA Javelin throw with a toss of 249'. In addition to the Javelin he runs the hurdles and throws the discus in dual meets.

He had an off day in the Olympic Trials in early June, but made the team by finishing second in the September, Los Angeles Trials.

Les is from Rainer, Oregon and plans to teach school and coach track and field events, after a stint in the army. He hopes to compete while in the service and remain in condition for a shot at a birth on the 1968 Olympic Team.

## Nu Pledges Take Walter Cronkite "On a Walk"

l to r: David Gallian, Tracy Walsh, Mike Cotton, Rick Harrison, Walter Cronkite, Nu '37, Stark Nelson, Phil Norris, Dennis Shepard, Bill Henkhaus, Allen McGuire, Bob Routh.

Photo by—Don Elliott



# ALPHA-ALPHA FORTIETH REUNION October 1924-1964



ALPHA-ALPHA was installed October 1924. Many of its founders are still closely identified with the chapter. One, Joseph Maryon Saunders, Jr. maintains an office where he directs the business of the University of North Carolina Alumni Association and keeps a friendly eye on chapter activity. It was he who suggested the following article. Bill Dauphinais, Zeta of Alpha-Alpha responded with the following account of the chapter to date.

The Alpha-Alpha Chapter of Chi Phi is located on the outskirts of the campus of the University of North Carolina and has become very much a part of this campus. Both the chapter as a whole, and the individuals who make up the chapter, are constantly busy working to better the University and the house.

Physical improvements on the house over the last few years can be easily seen. Presently, the house is kept warm by a new furnace which was installed in 1963. A few years ago a need for new wiring was noticed by the members of the chapter, and, consequently, the house was completely rewired. This now adds to the comfort and safety of the chapter house.

Other new improvements include a new hot water heater which is greatly appreciated by the inhabitants of the house, and a new refrigerator for the kitchen. The entire exterior trim has

been painted and the walls of the upper floors have been repainted.

Also, the landscaping around the house was recently improved to add to the beauty of the outward appearance of the house. However, the latest and perhaps most rewarding improvement was the complete redecorating and refurnishing of the house living room. The beautiful new living room was done with a professional's touch and a Chi Phi's taste.

A beautiful house, however, doesn't necessarily make a good fraternity. A good fraternity is made up of good members and their achievements. Alpha-Alpha feels with pride, that they have a good chapter. Its members hail from numerous Eastern states, which extend from Massachusetts to Florida, and as far west as Hawaii. This helps to make Alpha-Alpha a diverse house and a good house.

The brothers of Alpha-Alpha realize that they are in school for an education, and because of this, their academic achievement has been well up to par. Last Spring Semester the All-Brothers' Average was 2.55. This was one of the top averages on campus. Also, there has been a greater emphasis on helping the pledges make better grades to enable them to become brothers.

The brothers of Alpha-Alpha are engaged in numerous activities on campus.

These include student government, student finance committees, student politics, and varsity athletics. The members of Alpha-Alpha are also well thought of on the intermural fields and courts and have done well in the active intermural program at the University.

The members of the chapter have also made strides to better the community around them. Actions in this direction include a Christmas party for needy children and helping with charity drives.

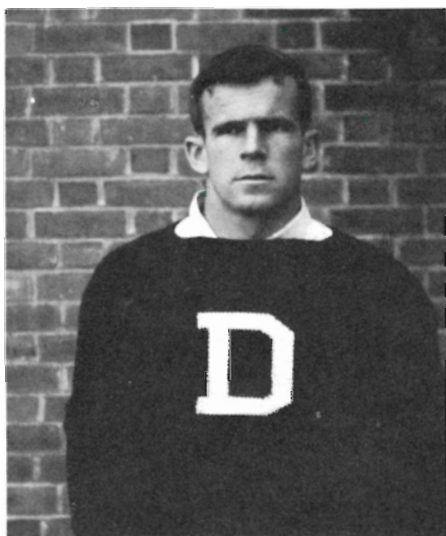
Some say that a chapter is only as strong as its alumni. Whether this be true or not, A-A has been helped a great deal by its past brothers and by those of other chapters living in the area.

Over the 40 years of continuous active membership in Chi Phi, Alpha-Alpha has established a close brotherhood ranging over the entire years of membership, and has provided, it is hoped, a warm and brotherly meeting place for Chi Phis of this and other chapters who have been in Chapel Hill.

It is indeed difficult to describe Alpha-Alpha of Chi Phi in an article because one cannot describe the warmth and brotherhood felt in the house. We hope that all who read of the chapter will have an opportunity to visit the house and experience Chi Phi hospitality.

Bill Dauphinais  
Zeta

## SENIOR LETTERMEN



Ted Bracken, Natick, Mass.  
(Football and Rugby)



Robert Koury, Atlantic City, N. J.  
(Football and Lacrosse)

## On Dartmouth Varsities

(Continued from page 7)

member of the Undergraduate Council Judiciary Committee and Dragon, a senior honor society. He also plays Rugby and traveled with the team to Germany last spring. Ted is a sociology major and recently won the Edith prize for his study in sociological interactions. He plans to go into business.

Bob Koury '65 is the 6'1", 205 pound center on the football team and plays Lacrosse in the spring. He is Chi's pledge master, receiving his training in the Marine Corps PLC program. Bob enjoys skiing on both water and snow. He is an economics major and will enter business after his tour of duty with the Marines.

Edgar Holley '66 is another two-sport man. He plays middle line backer for the Savages, the Dartmouth defensive football unit. In addition, he has nearly broken Dartmouth records in several track events. Ed is an avid auto racing fan from Maywood, Illinois. Everything about his 6', 190 pound frame gives an impression of speed. He is a sociology major, interested in a career in law.

Alan Anderson '66 from Dixon, California plays defense for the Lacrosse squad. His build, at 5'6", 180 pounds, can be deceptive out on the field. Andy is a Dean's list scholar in international relations. Much of his spare time is devoted to international problems and philately. He has also taken on the difficult job of training Chi's new house dog, Stelewol. He hopes to enter the U.S. Foreign Service after graduation.

JAMES R. HOWE, *Zeta*  
Chi Chapter



Les Tipton, member of 1964 U. S. Olympic Team, shows class before home crowd.

### Olympic Star

## Oregon's Les Tipton Throws Javelin

Les Tipton, Tau Delta '64 is a charter member of the University of Oregon chapter, and actively worked to build the new chapter while constantly persuading his track career. He served as a chapter officer and was also co-rush chairman.

Les is a big man, at 22, he is 6'4" and weighs 210 lbs. He lettered three times and was on both the 1962 and 1964 NCAA Championship Trackteams.

He will represent the U. S. team in the Javelin event. His best cast this year was 263'1½", and is one of the best made by an American this year. He won the 1964 NCAA Javelin throw with a toss of 249'. In addition to the Javelin he runs the hurdles and throws the discus in dual meets.

He had an off day in the Olympic Trials in early June, but made the team by finishing second in the September, Los Angeles Trials.

Les is from Rainer, Oregon and plans to teach school and coach track and field events, after a stint in the army. He hopes to compete while in the service and remain in condition for a shot at a birth on the 1968 Olympic Team.

## Nu Pledges Take Walter Cronkite "On a Walk"

l to r: David Gallian, Tracy Walsh, Mike Cotton, Rick Harrison, Walter Cronkite, Nu '37, Stark Nelson, Phil Norris, Dennis Shepard, Bill Henkhaus, Allen McGuire, Bob Routh.

Photo by—Don Elliott



# ALPHA-ALPHA FORTIETH REUNION October 1924-1964



ALPHA-ALPHA was installed October 1924. Many of its founders are still closely identified with the chapter. One, Joseph Maryon Saunders, Jr. maintains an office where he directs the business of the University of North Carolina Alumni Association and keeps a friendly eye on chapter activity. It was he who suggested the following article. Bill Dauphinais, Zeta of Alpha-Alpha responded with the following account of the chapter to date.

The Alpha-Alpha Chapter of Chi Phi is located on the outskirts of the campus of the University of North Carolina and has become very much a part of this campus. Both the chapter as a whole, and the individuals who make up the chapter, are constantly busy working to better the University and the house.

Physical improvements on the house over the last few years can be easily seen. Presently, the house is kept warm by a new furnace which was installed in 1963. A few years ago a need for new wiring was noticed by the members of the chapter, and, consequently, the house was completely rewired. This now adds to the comfort and safety of the chapter house.

Other new improvements include a new hot water heater which is greatly appreciated by the inhabitants of the house, and a new refrigerator for the kitchen. The entire exterior trim has

been painted and the walls of the upper floors have been repainted.

Also, the landscaping around the house was recently improved to add to the beauty of the outward appearance of the house. However, the latest and perhaps most rewarding improvement was the complete redecorating and refurnishing of the house living room. The beautiful new living room was done with a professional's touch and a Chi Phi's taste.

A beautiful house, however, doesn't necessarily make a good fraternity. A good fraternity is made up of good members and their achievements. Alpha-Alpha feels with pride, that they have a good chapter. Its members hail from numerous Eastern states, which extend from Massachusetts to Florida, and as far west as Hawaii. This helps to make Alpha-Alpha a diverse house and a good house.

The brothers of Alpha-Alpha realize that they are in school for an education, and because of this, their academic achievement has been well up to par. Last Spring Semester the All-Brothers' Average was 2.55. This was one of the top averages on campus. Also, there has been a greater emphasis on helping the pledges make better grades to enable them to become brothers.

The brothers of Alpha-Alpha are engaged in numerous activities on campus.

These include student government, student finance committees, student politics, and varsity athletics. The members of Alpha-Alpha are also well thought of on the intermural fields and courts and have done well in the active intermural program at the University.

The members of the chapter have also made strides to better the community around them. Actions in this direction include a Christmas party for needy children and helping with charity drives.

Some say that a chapter is only as strong as its alumni. Whether this be true or not, A-A has been helped a great deal by its past brothers and by those of other chapters living in the area.

Over the 40 years of continuous active membership in Chi Phi, Alpha-Alpha has established a close brotherhood ranging over the entire years of membership, and has provided, it is hoped, a warm and brotherly meeting place for Chi Phis of this and other chapters who have been in Chapel Hill.

It is indeed difficult to describe Alpha-Alpha of Chi Phi in an article because one cannot describe the warmth and brotherhood felt in the house. We hope that all who read of the chapter will have an opportunity to visit the house and experience Chi Phi hospitality.

Bill Dauphinais  
Zeta

# Trustees Announce: Sparks Medal Winners Outstanding Scholastic Chapters



## *Beta, Mu, Pi and Phi Top Chapters*

The Trustees of the Chi Phi Educational Trust and the Council awarded the Sparks Memorial Medal to the following outstanding students:

### **SECOND AWARD:**

Charles G. Bigelow, Xi '66  
Michael J. Nichols, A-T '65

### **FIRST AWARD:**

Bruce R. Wilson, A '65  
Heyward H. Macdonald, A '62  
James L. Sweeney, B '66  
Joseph S. Haraszti, G '66  
James B. Smith, D '64  
Warren P. Humphreys, Z '65  
Nathaniel G. Slaughter, H '66  
Michael Sansone, Th '65  
Martin P. Meacham, I '65  
Frederick L. Reynolds, K '64  
Steven J. Kieley, M '64  
Barry L. Harrell, N '66  
Robert R. D. Nickels, Pi '64  
John E. Hinkle, P '65  
Martin E. Lipinski, S '64  
Charles M. Rampacek, T '65  
David Lewis Kirp, Phi '65  
C. Thomas Kaesemeyer, Psi '65  
Frederick W. Ajax, Jr., Ome '66  
George M. Ingram, IV, A-A '66  
Jeffrey L. Brown, A-X '64  
Richard I. Ammon, Jr., A D '64  
Pedro M. Janowitz, ED '64  
Jack G. Redmond, Z D '65  
Charles E. Fosha, Jr., Th D '65  
Thomas L. Wilmore, I D '64  
John M. Ashton, T D '65  
Gary B. Rhodes, T D '63  
Raymond Palombo, P I K '65

Four of the winners have served their chapters as Alphas: Bruce Wilson, Virginia, Marty Meacham, Ohio State, Robert Nickels, Northwestern, and Ray Palombo, Rhode Island. Ray is a senior this year and has a 3.7 average on a 4 point system.

Mike Nichols, Alpha-Tau, a two time

achiever, is a senior in the School of Business. He had the unique distinction of receiving 12 hours of A+ and 9 hours of A. Not only is Mike an outstanding student but is a member of the University of Michigan Student Government Council, Chapter Pledge Trainer, and Social Chairman.

Dave Kirp of Amherst is the editor of the College paper and stands 15th in a class of 237. Barry Harrell, Texas, is a pre-med student carrying a 2.75 on a 3 point system. He has fun, however, as

a Varsity Cheerleader. Tom Kaesemeyer of Psi earned straight A's during the spring semester and played outstanding soccer for Lehigh.

Space precludes extolling all the achievements of the winners. Suffice to say all are outstanding and represent some of the finest talent in our chapters.

The winners of several chapters have not been nominated due to the failure of the chapter to file the proper reports with the Council. They will be announced at a later date.

## **BETA LEADS ALL CHAPTERS IN SCHOLARSHIP**

THE ANNUAL national Chi Phi Scholastic Achievement award goes to Beta (Massachusetts Institute of Technology) for the second year in succession. In addition to an engraved plaque the award carries an honorarium of \$100.00. Beta receives the award for ranking highest above the all-men's average among all chapters of Chi Phi.

Mu (Stevens Institute of Technology) receives a cash award of \$100 for showing the greatest improvement in scholarship for the year, among the chapters averaging over forty men.

Pi (Northwestern) is the recipient of \$75 for achieving the greatest improvement among the chapters having less than forty members.

Phi (Amherst College) receives \$25 for ranking first among all fraternities

on the campus, and is the only chapter to achieve this distinction in 1963-64.

Consolation awards of \$25 go to Alpha-Alpha (North Carolina) and Tau-Delta (Oregon). Both of these chapters achieved great improvement in scholarship during the year and were close seconds to the winners.

Dr. Frederick M. Hunter was instrumental in persuading the Trustees of the Chi Phi Educational Trust to recognize successful chapter scholastic achievement, and the awards program, which was instituted in 1956, is a fine living memorial to him. Those of us who knew Dr. Hunter will vividly recall his ringing challenge "The Chi Phi Fraternity will not forget its greatness." The brothers and chapters so achieving do much to enhance our greatness.

# *The Chi Phi*

# Educational Trust

## *The 1964 Annual Report*

### **BOARD OF GOVERNORS:**

CARMEN DELLA BELLA, Delta '49  
DR. ROBERT SENIOR, Zeta '49  
WYFORD D. JONES, Alpha-Chi '34  
RICHARD S. READE, Alpha-Tau '33  
E. BATES BLOCK, G '40 H '42, Grand Eta (Ex Officio)  
C. MORELAND THOMAS, H D '45, Grand Alpha (Ex Officio)  
MERRITT W. TRUAX, Epsilon Delta '33

### **BOARD OF TRUSTEES:**

JOHN E. OLIVER, H '17 Chairman  
FREEMAN STRICKLAND, Ome '24, Vice-Chairman  
RUTHERFORD L. ELLIS, H '25  
WILLIAM C WARDLAW, JR., Ome '24, Treasurer  
HENRY G. GILDNER, A-T '24

### **CHAIRMAN'S ANNUAL REPORT TO THE BOARD OF GOVERNORS OF THE CHI PHI EDUCATIONAL TRUST**

#### **GROWTH:**

During the past two years the scope of the Chi Phi Educational Trust has continued to broaden: the assets have increased, a greater number of scholarships granted and the number of students and chapters assisted through the loan program expanded.

#### **INVESTMENTS IN CHAPTER PROPERTIES:**

Loans for constructing, improving and renovating chapter houses were made to: University of Oregon Chi Phi Association, Indiana Chi Phi Alumni Association, Gamma Trust Association, Epsilon of Chi Phi House Association, Mu Chapter, Sigma Association, Chi Chapter Association, Alpha-Alpha Alumni Association and the Chi Phi Club of Nebraska. There is an outstanding loan commitment to Gamma Delta of Chi Phi, Inc.

### **SCHOLARSHIP DEVELOPMENT AND GRANTS:**

The following chapters received award checks in the annual competition for excellence and improvement in scholarships: Beta, Psi, Tau and Epsilon Delta.

Sparks Memorial Medals were awarded in both 1962 and 1963. The names of the recipients were published in the Chakett and therefore are not listed here.

The Trustees distributed several hundred copies of "How to Study" to freshmen on various campuses, and in addition reprinted an article on study techniques from the Chakett. The article is available in limited quantities to all chapters.

Professor Charles W. Stoddart has visited a number of chapters during the past two years, as well as several zone meetings. The Trustees are indeed indebted to Brother Stoddart for his continued effort and fine work in stimulating and directing the scholarship program.

The number of scholarships granted has been increased but more income is needed if the program is to be expanded. During the past several years scholarship grants were made to: Paul Offner, Phi '64, Gilbert Sobie, Tau Delta '62, Richard Trotter, Eta '55, Orville Wiseman, Jr., Epsilon Delta '61, Dave Richardson, Epsilon Delta '63, Allen Coxhead, Sigma '64, and Robert Bauer, Alpha-Chi '62.

Most of the scholarship grants were made to students who had completed four years of college work and needed financial assistance towards the achievement of an advanced degree. The grants totaled \$4,495 for the year ending July 31, 1964.

#### **GIFTS**

There is not sufficient space in this report to list the names of the almost three hundred brothers who gave to the Trust during the year. However, I am breaking with tradition and listing the names of those who gave \$25 or more. A number of men give \$25 or more jointly to the Fraternity and the Educational Trust. Their names are not included here if that portion of the gift designated for the Trust was less than the above mentioned amount.

**GIFTS** *Continued*

The fraternity is deeply indebted to these brothers and I know I speak for all in thanking them for their continued support.

**DONORS:**

Maynard R. Andreae, Alpha-Tau  
 Donald J. Barton, Mu  
 Eugene T. Benham, Iota  
 John L. Bennett, Jr., Xi  
 Peter F. Bezanson, Kappa  
 E. Bates Block, Gamma  
 A. P. H. Bloomer, Omicron  
 Dolph Briscoe, Jr., Nu  
 Brooks R. Caldwell, Epsilon Delta  
 L. C. Campbell, Alpha Delta  
 Roger H. Clapp, Alpha-Chi  
 E. H. DeConingh, Beta  
 Joe Rice Dockery, Xi  
 Jesse Draper, Omega & Eta  
 David W. Fairfield, Sigma  
 George W. Felker, III, Omega  
 George T. Fonda, Mu  
 Mervin B. France, Iota  
 Jack C. Fraser, Eta  
 Frank J. French, Psi  
 J. Baxter Gentry, Sr., Gamma  
 Harry B. George, Jr., Eta Delta  
 Richard C. Ham, Lambda  
 W. T. Harrison, Mu  
 W. Harold Hastings, Kappa  
 Ralph I. Hoyt, Phi  
 Emory G. Hukill, Beta  
 James R. Humphries, Epsilon Delta  
 Wm. Dudley Hunt, Jr., Theta Delta  
 A. H. Hutchinson, Xi  
 Donald W. Hutchinson, Sigma  
 Guy E. Jaques, Beta Delta  
 Wallace M. Jensen, Kappa  
 Donald R. Jonas, Alpha-Alpha  
 Herman C. Krannert, Sigma

F. W. Krebs, Xi  
 John B. Long, Epsilon & Alpha-Alpha  
 Charles E. Mackenzie, Iota  
 James R. Moore, Lambda  
 J. Harold Murphy, Xi  
 John E. Oliver, Eta  
 William A. Parker, Omega  
 Myron A. Parson, Gamma Delta  
 W. K. Purks, Gamma  
 James H. Rasnake, Jr., Eta  
 David J. Rex, Jr., Alpha Delta  
 Robert F. Roberts, Epsilon  
 Walter G. Roper, Jr., Gamma  
 George H. Ross, Kappa  
 Franklin G. Russell, Omicron  
 Robert A. Russell, Tau  
 George L. Sawyer, Alpha-Tau  
 John B. Scott, Jr., Tau  
 C. L. Scroggins, Alpha-Chi  
 John W. Seabury, Omicron  
 S. C. Slaymaker, Omicron  
 Rankin M. Smith, Gamma  
 Talbert E. Smith, Jr., Omega  
 Gordon P. Street, Xi  
 Freeman Strickland, Omega  
 L. M. Strobe, Kappa  
 S. Joseph Tankoos, Jr., Beta  
 Burgess A. Thomasson, Psi  
 Pollard Turman, Gamma  
 Archibald R. Updike, Jr., Theta Delta  
 Jason L. Wade, Alpha-Tau  
 Dr. William C. Warren, Jr., Gamma  
 Raymond J. Wean, Jr., Omicron  
 Joseph High Williams, Omega

**FREDERICK M. HUNTER MEMORIAL BOOK FUND:**

A resolution establishing a Book Fund in memory of Dr. Frederick M. Hunter, Alpha Theta Chi '05 was unanimously passed by the Trustees at their summer meeting. Under the memorial a standard reference book will be selected annually and a copy presented to the Chapter library of each chapter. In time it is hoped that more than one book per year will be donated. The Epsilon Delta chapter, Oregon State University has given a gift of \$150 to the fund in memory of Dr. Hunter who worked so closely with them during his lifetime. Brother Hunter who was Chi Phi's Scholarship Counselor from 1946 to 1958, passed away on May 15, 1964. Gifts earmarked for this fund would be most appreciated and should be sent to the Chi Phi Educational Trust, Room 550, 3330 Peachtree Rd., N.E., Atlanta, Ga. 30326.

**SUPPORT THE TRUST:**

The Trustees of The Chi Phi Educational Trust have seriously endeavored to adhere to the original purpose of the Trust of: one, assisting and promoting scholarship; two, helping to provide improved educational facilities; and three, assisting needy and deserving students. The Trustees urge you to participate in the program by annually giving to the Trust, or by providing a bequest in your will.

A form is provided at the end of the report for your convenience in remitting a gift to the Trust. It may also be used to request additional information from the Trustees regarding gifts, tax exemption, or bequest. Gifts to the Chi Phi Educational Trust are tax exempt.

Your officers have consistently endeavored to administer the Trust in the manner prescribed by the Charter and we invite your assistance — please feel free to make constructive criticism and suggestions for the improvement of the Trust program and work.

Respectfully submitted,  
 JOHN E. OLIVER, *Chairman*  
 The Chi Phi Educational Trust

**THE CHI EDUCATIONAL TRUST**  
 3330 Peachtree Road, N.E., Suite 550  
 Atlanta 5, Georgia

To The Trustees,  
 CHI PHI EDUCATIONAL Trust:

I would like the following information: \_\_\_\_\_  
 \_\_\_\_\_  
 \_\_\_\_\_  
 \_\_\_\_\_

Enclosed is my gift to the Chi Phi Educational Trust\* . . . . . \$ \_\_\_\_\_

Address: \_\_\_\_\_  
 \_\_\_\_\_

Date \_\_\_\_\_

\*Indicate if gift is for the Frederick M. Hunter Book Fund ( )



**CHI PHI EDUCATIONAL TRUST**  
**ASSETS OWNED**  
**July 31, 1964**

<u>Description</u>	<u>Date</u>	<u>Maturity</u>	<u>Book Value</u>
<b>INVESTMENTS:</b>			
Held by Morgan Guaranty Trust Co. of New York per statement on file:			
Coca-Cola Company — 70 Shares Common . . . . .			\$ 3,748.88
Standard Oil Company of New Jersey — 38 Shares . . . . .			347.93
Monsanto Chemical Company — 6 Shares Common . . . . .			278.51
Missouri Public Service Company — 10 Shares Common . . . . .			247.50
Held in National Office:			
Whitewater Corporation 4,000 Shares 6% Cumulative Preferred Stock . . . . .			4,000.00*
Total Investments . . . . .			\$ 8,622.82**
<b>LOANS:</b>			
Alpha Chapter of Chi Phi — Note . . . . .	1-10-59	9-30-63	\$ 171.58
Gamma Trust Association — Note . . . . .	8-27-62	Monthly	1,481.45
Epsilon of Chi Phi Educational Foundation, Inc. — Note . . . . .	10- 1-63	6- 1-65	500.00
Alumni Association of Kappa of Chi Phi			
Certificate of Indebtedness No. 97 . . . . .	3-31-42	Not Fixed	2,000.00
Mu Chapter of Chi Phi — Note . . . . .	1-15-63	Monthly	250.00
Note . . . . .	7- 1-63	Monthly	500.00
Texas Chi Phi Educational Trust — Note . . . . .	3- 3-59	Monthly	12,354.99
Pi Association of Chi Phi, Inc. — Note . . . . .	9-17-51	Demand	6,845.82
Sigma Association — Note . . . . .	1-10-63	Demand	1,800.00
Tau Trust Association—Note . . . . .	6-15-61	Monthly	333.32
Chi Chapter Association — Note . . . . .	10-15-63	Yearly	2,000.00
Omega Trust Association — Note . . . . .	5- 1-63	Monthly	7,510.89
Note . . . . .	10- 1-53	Demand	4,000.00
Note . . . . .	7- 1-59	Demand	1,000.00
Alpha-Alpha Chapter of Chi Phi — Note . . . . .	3- 1-64	Monthly	700.00
Note . . . . .	7-15-64	Monthly	1,300.00
Alpha-Tau Chapter House Association — Note . . . . .	8-21-61	Demand	920.00
Oregon State Chi Phi Association Second Mortgage Bonds (28-35) (39-50)	5- 6-59	Annual	8,000.00
Eta Delta of Chi Phi Alumni Association — Note . . . . .	3-26-63	3-26-68	5,000.00
Florida Chi Phi Association, Inc. — Note . . . . .	6-15-63	Quarterly	3,650.00
Indiana Chi Phi Alumni Association — Second Mortgage . . . . .	7-31-63	Demand	58,082.00
University of Oregon Chi Phi Association — Note . . . . .	7-26-60	Demand	5,000.00
Note . . . . .	10-15-60	Demand	5,000.00
Note . . . . .	9-20-62	Demand	5,000.00
Note . . . . .	6- 1-62	Demand	2,400.00
Chi Phi Club of Nebraska — Note . . . . .	1-15-64	Demand	5,000.00
Students Loans — Notes . . . . .	Various	Various	3,652.71
Student Loans . . . . .			\$144,452.76
Grand Total . . . . .			\$153,075.58

\*The Whitewater Corporation is not listed and we have used the cost for July 31, 1964 value.

\*\*Value as of July 31, 1964—\$17,750.75.

# Educational Trust

Continued

## STATEMENT OF CASH RECEIPTS AND DISBURSEMENTS

August 1, 1963 to July 31, 1964

### CHI PHI EDUCATIONAL TRUST BALANCE SHEET July 31, 1964

ASSETS	
Cash in Banks . . . . .	\$ 1,260.31
Investments:	
Stocks . . . . .	\$ 8,622.82
Mortgages and Notes . . . . .	144,452.76
Accounts Receivable: . . . . .	118.81
Total Assets . . . . .	<u>\$154,454.70*</u>
LIABILITIES	
Accounts Payable . . . . .	1,364.38
Surplus . . . . .	153,090.32
Total Liabilities . . . . .	<u>\$154,454.70</u>

\*Represents an increase of \$8,168.20 over July 31, 1963.

### RECEIPTS

Interest and Dividends:	
Savings Accounts . . . . .	\$ 15.34
Investments . . . . .	444.92
Loans on Chapter Houses and to Students . . . . .	3,411.69
Contributions . . . . .	6,576.00
Profit on Sale of Investment . . . . .	6,268.04
Total Receipts . . . . .	<u>\$16,715.99</u>

### DISBURSEMENTS

Administration and Custodian	
Fee . . . . .	415.00
Audit . . . . .	150.00
Bond Premium . . . . .	12.50
Educational Film Gift . . . . .	150.00
Fund Raising and Office Expense . . . . .	1,989.94
Scholarship-Grants . . . . .	4,495.00
Scholarship Awards . . . . .	474.98
Scholarship Expense . . . . .	60.80
Total Disbursements . . . . .	<u>7,748.22</u>
Excess of Receipts over Disbursements . . . . .	<u>\$ 8,967.77</u>

## CLASS OF 1964 REPORTS

### ALPHA

*Peter T. Johnson*, Planner, Norfolk Redevelopment and Housing Authority, Norfolk, Va.  
*Dallas M. Kersey*, Bureau Chief, Shenandoah Valley News Bureau, Richmond Times-Dispatch, office in Staunton, Va.

### BETA

*Lansing Hatfield*, Graduate student, M.I.T., Cambridge, Mass.

### GAMMA

*Arthur R. Preiss, Jr.*, M.B.A. candidate, Indiana University, Bloomington, Ind.

### DELTA

*Alan J. Karcher*, Law School student, Sayreville, N.J.  
*John M. Kortz*, Marine Construction Engineer, 1447 A. So. Pacific St., Oceanside, California.

### EPSILON

*Michael D. Carver*, Graduate Student, Yale University, New Haven, Conn.  
*Robert L. Hines, Jr.*, Instructor, Fort Union Military Academy, Fort Union, Va.

### ZETA

*R. William Difley*, Graduate student in Business Administration, University of Pittsburgh, Pittsburgh, Pa.  
*Philip V. Holberton*, Public Accountant, Hurdman and Cranstoun, New York City.  
*Orville C. Hognander, Jr.*, Graduate Student, Rensselaer Polytechnic Institute, Troy, N.Y.

### ETA

*Charles J. Gentry*, Insurance Business, 800 Longview Rd., Apt. 326, Knoxville, Tenn.  
*Brooks Anthony (Tony) Nicholson*, Detailing—E. R. Squibb & Sons, Birmingham, Ala.

### THETA

*Duvid P. Linhares*, Engineer, General Dynamics, Rochester, N.Y.

### KAPPA

*Donald C. Demitros*, Housing Market Analyst, Washington, D.C.  
*Jonathan T. Stoddard*, I.B.M. sales trainee, Madison, Wisc.

### MU

*Rudolph H. Haehnel*, Design Engineer, Textile Machine Works, Reading, Pa.  
*Kenneth M. Kemper*, Engineer, Lockheed Missiles and Space Co., Sunnyvale, Calif.  
*Alan Propper*, Mechanical Engineer, Pacific Gas and Electric Co., San Francisco, Calif.

### NU

*Joseph H. Rentz, Jr.*, Group Sales Consultant, 403 Rusk Bldg., Houston, Texas.  
*Robert C. Siddons*, Insurance Sales, P.O. Box 956, Austin, Texas.

### XI

*Wayne D. Wetzel, Jr.*, student (5 yrs. engineer) Painesville, Ohio.

### PI

*John W. Terhune*, Graduate Student, Arizona State University, Tempe, Arizona.

*Thomas E. Wilson*, Graduate Student, Northwestern University, Evanston, Illinois.

*William T. Mauldin*, 2nd Lt., U. S. Air Force, stationed at 3412th School Squadron, Keesler AFB, Miss.

### CHI

*William H. Neukom*, Law Student, Stanford University, Palo Alto, Calif.

*Allan H. Pierce, Jr.*, Law Student, Stanford University, Palo Alto, Calif.

*Jeffrey P. Swain*, Ensign, U.S.N.R., USS Guam (LPH-9), c/o FPO, New York, N. Y.

*Robert J. Szakonyi* is traveling in Europe. Permanent residence 1941 W. Ohio St., Chicago, Ill.

### PSI

*J. Robert Baum*, Graduate Student, Northwestern University School of Business, Evanston, Ill.

*Carl W. Euker, III*, Industrial engineer, Black & Decker Manufacturing Company, Towson, Md.

*Dale R. Smith, Jr.*, Mechanical engineer, 147 Springdale Road, York, Pa.

### OMEGA

*Frank E. Myers, Jr.*, Electrical Engineer, Georgia Power Company, Macon, Ga.

### ALPHA-TAU

*John H. Diebold*, Graduate Student, University of Michigan School of Business Administration, Ann Arbor, Mich.

*John F. Dobbertin, Jr.*, Journalist, Beirut Daily Star, Beirut, Lebanon.

*Richard B. Lundy*, Electronic Engineer, 532 Third Street, Ann Arbor, Michigan.

# CAMPUS AND ALUMNI BRIEFS

## At Alpha Theta Chi

### Babos, Z'60, Named Chapter Advisor

Sandor Babos, Zeta '60 was born on the 29th of March, 1938 in Mukden, China, to The Reverends Alexander and Maria Babos. He entered the United States of America in the fall of 1947, and completed his elementary education in Fairfield, Connecticut. After completing high school at the Mount Hermon School for Boys, Mount Hermon, Massachusetts, he matriculated at Franklin and Marshall College, Lancaster, Pennsylvania, where he was initiated into the Zeta Chapter. He was pledge captain of his class and held the office of Epsilon during his senior year. Brother Babos graduated in June of 1960 with a B.A. in history, and as a 2nd Lt. in the United States Air Force.

Following flight training at James Con-

nally AFB, Texas, and additional training at Mather AFB, California, Stead AFB, Nevada, McConnell AFB, Kansas, he is now permanently stationed at Lincoln AFB, Nebraska, where he serves as navigator-bombardier on a Strategic Air Command Combat Crew flying the B-47 jet bomber. Sandy arrived in Lincoln at an opportune time, and the new Alpha Theta Chi chapter quickly recognized his talents and asked him to serve as their chapter Alumni Advisor. He has participated actively since early spring 1964.

Sandor is married to the former Nancy Gail Barthold of Olyphant, Pennsylvania, and has a son Jeffrey Charles, two years old.



SANDOR BABOS Z'60  
Alpha Theta Chi Chapter Advisor

### PAUL GAERTNER OMEGA '50 TO ASSIST COUNCIL AND NATIONAL DIRECTOR

The Grand Alpha announced the appointment of Brother Gaertner to the post of Council assistant at the 1964 Congress. In this capacity he will serve as a consultant and visitor to the chapters located in Ohio, Michigan, Illinois, and Wisconsin.

Paul resides in Champaign, Illinois with his wife Katherine and their three sons. He is attending the University of Illinois Institute of Labor and Industrial Relations and expects to receive a Masters degree early in 1966. In the intervening years since graduating from Georgia Tech he has held executive positions in engineering and personnel with a producer of vacuum tubes and an electronic test equipment manufacturer.

The Sigma chapter has instituted a tutorial program for the new pledge class under the direction of a Doctoral candidate in Education. Gaertner is directing the effort.

### BETA RECEIVES BEQUEST

Charles Perkins Moat, Beta '96 and his wife passed away last spring. Brother Moat was Beta's second oldest living alumnus.

The chapter is the recipient of one sixth of the total sum specified in the will, and will be used to improve a section of the house — the area to endure in memory of them.

### Silver Falls State Park

### OREGON CHI PHIS MEET FOR FAMILY OUTING

Silver Falls State Park was the setting for what is hoped to be the first annual Chi Phi Alumni Picnic. Attending the August 23rd get-together with families and friends were the following members of Epsilon Delta; Bruce Dransfeldt '64 and Rick Fraga '60 from Eugene, Ray Gallagher '34, Wayne Cox '63, Harold Rosebraugh '33 from Salem, Alex Hamilton '56 and Larry Youngman '61 from McMinnville, Ed Charman '59 and Neal Ehlen '59 from Milwaukee, Gary Henrikson '59 from Lake Oswego, Lee Merklin '56, Darrell Parcher '61, Chuck Schnautz '64 and Chuck Bullock '61 from Portland.

## SIGMA PLEDGE CLASS



Back row, l. to r.: Goldberg, Yureskes, Pestell, Anderson, Konrad, Brent, Spiegel, Farris, Zagaria, Seymour. Middle row, l. to r.: Christodoulou, Huth, Svestka, Kromka, Freda, Linne, Olinick, Wong. Front row, l. to r.: Perotto, Gilchrist, Girardi, Connaghan, Watson.

## SIGMA SHOWS A NEW FACE



Bob Hoffman, S'34, Joe Tomes, S'49 and Bob Cameron, S'36, provided impetus for chapter house face lifting and renovation accomplished at Illinois chapter during the past summer.

## INDIANA U. GYMNASTS?



Just Iota Delta's pledges putting the finishing touches on new pin light sign on front of the new chapter house which was dedicated last Spring.



## PSI TO BUILD ADDITION

A complete renovation and addition to Briarfield is the topic of immediate concern this year at Psi. A considerable quantity of effort went into the drawing and approval of the final plans for this renovation since it was unanimously felt that the basic character of the first chapter house to grace the upper campus of South Mountain should not be altered in any way. An extensive fund-raising campaign is presently being carried out by our chapter alumni organization, The Briarfield Association, in conjunction with Lehigh's Centennial Fund drive. The response to the early phases of this campaign has been excellent, and there is a strong possibility that the entire project will be completed by September, 1965.

## Samuel Mason Day, Jr., M.D., Tau '34 Is Florida Medical Association President

**A**CCEDING to the presidency of the Florida Medical Association at the Annual Meeting in May, Dr. Samuel Mason Day, Jr., T'34, of Jacksonville, is continuing to serve the Association faithfully and well after filling the office of Secretary-Treasurer for more than a decade. Born in Nixburg, Ala., in 1914, Dr. Day received his elementary and academic training in his native state. He attended the public schools of Alexander City and in 1934 was awarded the Bachelor of Arts degree by the University of Alabama, Tuscaloosa, where he was a member of the Chi Phi Fraternity. For his professional training he enrolled at Washington University, School of Medicine, St. Louis, and in 1937 received the degree of Doctor of Medicine. He was a member of Phi Chi medical fraternity. Upon completion of internships in Baltimore he served residencies from 1939 to 1942 in New York City and Wilmington, N. C. In 1942 he entered the Medical Corps of the United

States Army, attained the rank of major and served as chief of general surgery and assistant chief of the surgical service at Camp Blanding prior to discharge from military duty in 1946.

Shortly after separation from the service, Dr. Day entered the private practice of general surgery in Jacksonville. An active member of the surgical staff of St. Vincent's, St. Luke's, Baptist Memorial, Hope Haven and Brewster hospitals and the Duval Medical Center, he was from 1957 to 1962 co-chief of the Surgical Service at St. Vincent's Hospital and in 1960-1961 was chief of staff. Currently he is director of intern and resident training at that institution.

In the Duval County Medical Society Dr. Day served as associate editor of its Bulletin, secretary, president in 1959 and chairman of the board of governors in 1962.

In 1951 Dr. Day was elected Secretary-Treasurer of the Florida Medical Association. He filled that exacting post

with distinction for 12 years, serving by reason of his office as an ex-officio member of the Board of Governors and a member of its executive committee. In 1963 he became President-elect.

A diplomat of the American Board of Surgery, Dr. Day is a fellow of the American College of Surgeons, Southern Surgical Association and Southeastern Surgical Congress. He holds membership in the Southern Medical Association, American Medical Association and World Medical Association.

Dr. Day is medical director of American Heritage Insurance Company, and was for 12 years assistant treasurer of Blue Shield of Florida. A former trustee of the Jacksonville Art Museum, Dr. Day is a member of the Meninak Club and the Florida Yacht Club. He holds membership in the Riverside Presbyterian Church.

Dr. Day and Mrs. Day have three sons and a daughter.

---

### F AND M AWARDS APPEL ALUMNI CITATION

**JAMES Z. APPEL**, Zeta '28, a Lancaster physician, has been director of the Franklin and Marshall College Health Service since 1943. In that year he first set out to organize the medical services of the College into the complete organization of physical and medical aid for Franklin and Marshall students. For 30 years he has been on the bench at football games and has acted as physician for all of the athletic teams of the College as a part of his readiness to tend students at any time of night and day.

He received the B.S. degree, magna cum laude, from Franklin and Marshall in 1928 when he was awarded the Williamson Medal, given annually to the outstanding senior. The University of

Pennsylvania awarded him the degree, Doctor of Medicine, in 1932 and he received the honorary degree, Doctor of Science, from his alma mater in 1952.

A member of the board of trustees of the American Medical Association, he has served that board as secretary and is currently the vice chairman. During the past two years he has been appointed by the U.S. Surgeon General as a delegate to the World Health Organization meeting in Geneva, Switzerland. He is a charter member of the World Medical Association.

Dr. Appel is president of the medical staff and senior surgeon at the General Hospital in Lancaster.



**Brother John R. Abel**, Eta Delta '29 former president of the American Dental Association, will serve as president of the University of Southern California General Alumni Association for 1964-65.

# PLEDGES July 20 to October 20, 1964

## BETA (9)

David C. Hill, Nanuet, N. Y.  
Thomas L. McGovern, Jr., Orlando, Fla.  
David R. Berry, Rome, Ga.  
John A. Yasaitis, Clarkston, Mich.  
Jonathan W. Reusser, Grand Rapids, Mich.  
George W. Brooks, Yardley, Pa.  
Donald E. Zimmerman, Overland Park, Kansas  
Richard K. Stockwell, Kalamazoo, Mich.  
David J. Hughes, Topeka, Kansas

## GAMMA (27)

Weylan S. Adams, Jr., Marietta, Ga.  
Richard W. Batts, Hawkinsville, Ga.  
Steven L. Begor, Columbus, Ga.  
Joseph M. Blankenship, Miami, Fla.  
Alfred A. Blum, Jr., Gainesville, Ga.  
Robert V. Coble, Sarasota, Fla.  
Louis L. Davis, Jr., Atlanta, Ga.  
Robert E. Everett, Dahlonega, Ga.  
Edward A. Geis, Hollis, N. Y.  
Richard M. Kutsch, Decatur, Ga.  
William H. Marsh, III, Atlanta, Ga.  
Kurt C. McDuffie, Oak Ridge, Tenn.  
John R. Morris, Mableton, Ga.  
William C. Nesbitt, Jacksonville, Fla.  
William P. Norred, Hawkinsville, Ga.  
William H. Oliver, Jr., Nashville, Tenn.  
Charles J. Panaro, Owego, N. Y.  
Donald C. Pendergrast, Atlanta, Ga.  
James C. Pittenger, Knoxville, Tenn.  
Frederick L. Roberts, Tucker, Ga.  
Robert E. Rudert, Rome, Ga.  
Terry H. Saxon, Marietta, Ga.  
Richard D. Selman, Rome, Ga.  
Lyndle E. Thomas, Jr., Valdosta, Ga.  
Thomas A. Wade, Jr., Columbus, Ga.  
James C. Webb, Atlanta, Ga.  
Dexter C. Followill, Columbus, Ga.

## DELTA (2)

William Salmon, Sussex, N. J.  
Roger Shaulis, Pittsburgh, Pa.

## ZETA (5)

Melville Heath, Duxbury, Mass.  
Ronald Deprez, Portland, Maine  
John Ford, Pittsburgh, Pa.  
Henry Noon, Sunnysvale, Calif.  
Bill Simons, Longmeadow, Mass.

## IOTA (5)

Kenneth W. Ahlman, Lorain, Ohio  
Kenneth C. Barry, Jr., North Olmstead, Ohio  
Joseph W. Domer, Dover, Ohio  
James A. Hall, Willowick, Ohio  
Raymond D. Wolfangel, Jr., Cincinnati, Ohio

## KAPPA (22)

Warren J. King, Milwaukee, Wisc.  
Charles E. Ohrberg, Warrenville, Ill.  
Jim Krzeminski, Greenfield, Wisc.  
John Schad, Manitowoc, Wisc.  
Gregg A. Reynolds, Appleton, Wisc.  
Ken Hutchison, Riverside, Ill.  
Mike Remington, Madison, Wisc.  
Bob Conway, Madison, Wisc.  
Charles E. Gleason, Arlington Heights, Ill.  
Peter V. Gleysteen, Milwaukee, Wisc.  
Neil C. Halleen, Sheboygan, Wisc.  
James McCracken, Oak Park, Ill.  
David Schoepke, Wausau, Wisc.  
William Dippert, West Hartford, Conn.  
William Norris, Massapequa, N. Y.  
John Haugen, LaCrosse, Wisc.  
Laurence John Liss, Whitefish Bay, Wisc.  
William T. Stafford, Madison, Wisc.  
Landy F. Sparr, Madison, Wisc.  
Dick Pinney, Milwaukee, Wisc.  
Pete Langley, Thiensville, Wisc.  
Steve Scharrs, Greenbay, Wisc.

## LAMBDA (11)

Michael K. Ipson, Walnut Creek, Calif.  
Ian F. Dibblee, Ross, Calif.  
Stephen W. Dyer, Carmel, Calif.  
David H. Brown, Pasadena, Calif.  
William G. Geffney, Arcadia, Calif.  
Edward K. Webster, Washington, D. C.  
Tomas J. Harriman, Pasadena, Calif.  
Bruce G. Wakeman, Pasadena, Calif.  
Michael J. Boss, Citrus Heights, Calif.  
Mark S. Pringle, Pasadena, Calif.  
Michael G. Rucks, Pasadena, Calif.  
Terry R. Ryder, Roseburg, Ore.

## NU (4)

Gareth W. Wiley, Jr., Austin, Texas  
Stephen H. Smith, Austin, Texas  
James L. Mason, Dallas, Texas  
David D. Beck, Wharton, Texas

## PI (16)

John K. Alilunas, Fredonia, N. Y.  
Edwin O. Bradley, Downers Grove, Ill.  
Arthur W. Brown, Jr., Denver, Colo.  
Gary L. Brown, Waukegan, Ill.  
Walter L. Brown, Hammond, Ind.  
James L. Egler, Downers Grove, Ill.  
Jeffery W. Holbrook, Oradell, N. J.  
John C. Kenny, Larchmont, N. Y.  
Alexander W. Kirkpatrick, St. Genese, Belgium  
Richard C. Miller, Euclid, Ohio  
John M. Pimpton, Park Ridge, Ill.  
James C. Rhodes, Wheaton, Ill.  
Richard J. Rodriguez, Haworthy, N. J.  
Bruce R. Ukockis, Chicago, Ill.  
Alan G. Wade, Pittsburgh, Pa.  
James R. Walker, Brookfield, Ill.

## SIGMA (24)

David J. Brent, Chicago, Ill.  
R. Bruce Anderson, Lake Forest, Ill.  
Steven P. Seymour, Chicago, Ill.  
Anthony D. Freda, Elmwood Park, Ill.  
William D. Watson, Joliet, Ill.  
Allen R. Spiegel, Oak Park, Ill.  
Joseph A. Girardi, Oak Park, Ill.  
Walter N. Chepulis, Chicago, Ill.  
Robert E. Svestka, Riverside, Ill.  
Charles A. Konrad, Elmhurst, Ill.  
James R. Muth, Chicago, Ill.  
Bruce E. Pestelle, Forest Park, Ill.  
John R. Goldberg, Oak Park, Ill.  
Dennis E. Dietz, Park Forest, Ill.  
Charles J. Yureskes, Chicago, Ill.  
Joseph A. Borysowicz, Chicago, Ill.  
Elliott A. Linne, Chicago, Ill.  
Samuel N. Zagaria, Highland Park, Ill.  
Paul M. Olinick, Crystal Lake, Ill.  
Gene Wong, Oak Park, Ill.  
John R. Gilchrist, Oak Park, Ill.  
Mitchel E. Farris, Oak Park, Ill.  
Stephen M. Christodoulou, Melrose Park, Ill.  
David P. Kromka, Wayne, Pa.

## TAU (19)

Lee P. Connor, Birmingham, Ala.  
James S. DeRoy, Jr., Birmingham, Ala.  
Gale Bryant, Huntsville, Ala.  
John C. VanDeVeer, Birmingham, Ala.  
John S. Johnston, Weaver, Ala.  
James M. Hayden, Montgomery, Ala.  
Richard Brown, Birmingham, Ala.  
Walter L. Adams, Birmingham, Ala.  
Forest S. Patrick, Tuscaloosa, Ala.  
Edwin H. Bullock, Andalusia, Ala.  
Jesse M. Bingham, Tuscaloosa, Ala.  
James D. Wilder, Tuscaloosa, Ala.  
John W. Porter, Selma, Ala.  
Steve D. Port, Rome, Ga.  
William Bullen, Red Bay, Ala.  
James Kain, Tuscaloosa, Ala.  
Keith Alverson, Red Bay, Ala.  
William Manuel, Tuscaloosa, Ala.  
Rod Farb, Mobile, Ala.

## PSI (1)

Frederick S. Hansen, Morrisville, Pa.

## OMEGA (20)

Douglas C. Bell, Atlanta, Ga.  
Herbert A. Briggs, Atlanta, Ga.  
Phillip N. Brown, Augusta, Ga.  
Glenn E. Davis, Augusta, Ga.  
John E. Gaines, Augusta, Ga.  
Sammy C. Grizzle, Dalton, Ga.  
Steven C. Hall, Atlanta, Ga.  
Walter W. Morton, Augusta, Ga.  
Charles M. Orr, Rome, Ga.  
William L. Parham, Atlanta, Ga.  
Joseph P. Perry, Atlanta, Ga.  
Randall B. Scoggins, Dalton, Ga.  
Robert O. Seitz, Jr., Atlanta, Ga.  
Gary W. Smith, Macon, Ga.  
John D. Snyder, Pensacola, Fla.  
Jerry P. Solomon, Jacksonville, Fla.  
Jimmy E. Teasley, Dalton, Ga.  
John E. Wade, Douglas, Ga.  
Gordon J. Wysong, Atlanta, Ga.  
Lee Scarborough, Conway, S. C.

## ALPHA-ALPHA (3)

Terry K. Robinson, Ft. Lauderdale, Fla.  
William L. Kemp, Southern Pines, N. C.  
John B. Dickson, Brevard, N. C.

## ALPHA-TAU (19)

Richard Allison, Grosse Pointe, Mich.  
Daniel Arsulowicz, Grand Rapids, Mich.  
Robert Bacon, Scottville, Mich.  
Albert Berrie, Harrisburg, Pa.  
Jerry Buke, Dearborn, Mich.  
Gilbert Butson, Center Line, Mich.  
Jeffrey Coffin, Birmingham, Mich.  
Lee Craft, Ionia, Mich.  
Michael Hiemstra, Grand Rapids, Mich.  
Joseph Hoffman, Birmingham, Mich.  
Richard Malboeuf, Pymouth, Mich.  
Michael McCroskey, North Muskegon, Mich.  
Robert Morgan, Toledo, Ohio  
Lawrence Myers, Lowell, Mich.  
John O'Hara, Birmingham, Mich.  
Charles Schrimper, Ft. Wayne, Ind.  
Rod Waage, K. I. Sawyer, AFB, Mich.  
Ervin Wheeler, Mt. Clemens, Mich.  
Christopher Simoni, Grand Blanc, Mich.

## ALPHA-CHI (28)

Frederick Evans, Pittsburgh, Pa.  
James Baldrige, Mentor, Ohio  
James Buck, Bradford, Pa.  
Eugene Tiesler, Pleasantville, N. Y.  
Richard Lerman, New Haven, Conn.  
Larry Stern, New York, N. Y.  
Brian Bolay, East Amherst, N. Y.  
Ira Lapidus, Woodridge, Conn.  
Thomas Lange, Bala-Cynwyd, Pa.  
Wayne Clark, Hamden, Conn.  
Charles Beach, Riverton, Conn.  
Harold Farkas, Cleveland, Ohio  
Lee Dixon, Youngstown, Ohio  
Richard Stoneberg, Chestnut Hill, Mass.  
Paul Caplan, Leominster, Mass.  
Bruce Nichols, Shelton, Conn.  
Wayne Parker, Morristown, N. J.  
Raymond Rogers, Salem, Ohio  
Roger Pollock, Bridgeville, Pa.  
Kirk Hornbeck, Washington, D. C.  
Harold Dann, Lynnfield, Mass.  
Robert Napier, Jr., Chatham, Mass.  
David Harwood, Westfield, N. J.  
Peter Bleckner, Malverne, N. Y.  
Robert Jude, Hinsdale, Ill.  
Harold Banks, Port Washington, N. J.  
Robert Bachman, Radnor, Pa.  
Neil Aring, Cleveland, Ohio

## ALPHA DELTA (17)

Robert Gourley, Jenkintown, Pa.  
Philip Kivlin, Bowling Green, Ohio  
William Page, Moosic, Pa.  
Jack Helbring, Pittsburgh, Pa.  
David Stoekel, Lancaster, Pa.  
William Shoaf, Arlington, Ga.  
Richard Flynn,  
Arthur Yoder, Pittsburgh, Pa.  
Terrence McCarthy, Allison Park, Pa.  
Clifford McKrell, Endicott, N. Y.  
Terence Starz, Pittsburgh, Pa.  
Thomas (Tom) Thomas, Oil City, Pa.  
Joseph Felice, State College, Pa.  
Charles Bickley, East Longmeadow, Mass.  
Richard Sampson, Dumont, N. J.  
Michael Walsh, Rumson, N. J.  
Douglas Wilson, Warren, Pa.

## GAMMA DELTA (5)

James Schlough, St. Cloud, Minn.  
Terence H. Kriha, St. Paul, Minn.  
Jeffrey Infelise, St. Paul, Minn.  
Omar Bawazir, Saudi, Arabia  
Keith S. Dekko, Gary, Minn.

## EPSILON DELTA (14)

Gregory L. Applen, Central Point, Ore.  
Terry Wm. Christiansen, Klamath Falls, Ore.  
M. J. Cunningham, Albany, Ore.  
Scott W. Davis, Corvallis, Ore.  
John T. Enright, Klamath Falls, Ore.  
Joel J. Loeffler, Eugene, Ore.  
Rick Ragan, Roseburg, Ore.  
Paul O. Schaber, Sherwood, Ore.  
Robert B. Skille, Portland, Ore.  
Robert Sloan, Klamath Falls, Ore.  
Craig G. Thorsen, Portland, Ore.  
Roger E. Vlach, Grants Pass, Ore.  
Daniel A. Zenor, Grants Pass, Ore.  
Dwayne Robinson, Grants Pass, Ore.

# INITIATES July 20-October 20, 1964

## Marriages

### ALPHA (7)

William R. Dandridge, Jr., Charlottesville, Va.  
John P. Derrenberger, III, Richmond, Va.  
Frederick L. McEnany, III, Salem, N. J.  
Frank Anthony Romeo, Jr., Fairfax, Va.  
Rowland Frederick Schlegel, Jr., Norfolk, Va.  
Richard R. Tierney, Arlington, Va.  
Michael J. Wolfe, Alexandria, Va.

### BETA (3)

Richard A. Haberman, Englewood Cliffs, N. J.  
James L. Kirtley, Jr., Ridgefield, Conn.  
Wallace W. Wrigley, Quincy, Mass.

### ZETA (1)

Terry Lee Hostetter, USAF Academy, Colo.

### THETA (2)

Leonard B. Fox, III, Port Charlotte, Fla.  
David G. Wight, Mt. Kisco, N. Y.

### MU (10)

Lewis Goldklang, Jersey City, N. J.  
Paul T. Tolle, Rosedale, N. Y.  
George A. Driscoll, Wayne, N. J.  
George E. Cornelius, Jr., Moylan, Pa.  
Charles A. Halsey, Southampton, N. Y.  
John M. Casteline, Wallington, N. J.  
Daniel J. Ward, New York, N. Y.  
Henrik Jonson, Blauvelt, N. Y.  
Martin S. Brown, Fair Lawn, N. J.  
Frank J. Vitale, Newark, N. J.

### PI (4)

Keith E. Troemner, Park Ridge, Ill.  
George B. Fitzgerald, Belmont, Mass.  
John R. Bloschinsky, Arlington Heights, Ill.  
Lawrence P. Carrington, Jr., Essex Falls, N. J.

### RHO (16)

Robert T. Hinaman, Williamsport, Pa.  
Leslie B. Rogers, III, Easton, Pa.  
John L. Wieting, Westfield, N. J.

Alfred E. Whitehouse, New Vernon, N. J.  
Stephen J. Swarin, New Market, N. J.  
William R. Stevenson, Hamden, Conn.  
Robert G. Rufe, Sellersville, Pa.  
Peter D. Nelson, Wayne, N. J.  
Donald B. Miller, Plandome, L. I., N. Y.  
Richard E. Mellin, Glen Rock, N. J.  
Ronald K. Kennedy, Plantsville, Conn.  
Wayne M. Gilbert, Levittown, Pa.  
Wayne R. Gahwiller, Port Jefferson, N. Y.  
James F. Albus, Hatboro, Pa.  
Donald R. Sellers, Huntington, N. Y.  
James N. Coates, Rowayton, Conn.

### TAU (4)

Carl A. Blomstran, Jr., Birmingham, Ala.  
Thomas W. Sinclair, Birmingham, Ala.  
Thomas L. Pender, Birmingham, Ala.  
Charles J. Shaw, Jr., Montgomery, Ala.

### OMEGA (1)

John H. Haley, Jr., Atlanta, Ga.

### ALPHA-TAU (10)

James C. Wendt, Detroit, Mich.  
Richard W. Anderson, Pellston, Mich.  
Francis H. Miller, Jr., East Grand Rapids, Mich.  
Jay D. Wiley, Grand Rapids, Mich.  
Tom M. Ittner, Midland, Mich.  
James D. Rozsypal, Flint, Mich.  
John L. Finkelmann, Grosse Ile, Mich.  
John M. Saveland, Shaker Heights, Ohio  
Allen R. Hawley, Lakeview, N. Y.  
Ross A. Mahachek, Flint, Mich.

### EPSILON DELTA (2)

David G. Harrison, Albany, Ore.  
Alan W. Lechner, Portland, Ore.

### ETA DELTA (4)

Nicholas P. Seifen, Jr., Sacramento, Calif.  
Bruce E. Inzer, Downey, Calif.  
Stephen T. Cirillo, Hawthorne, Calif.  
Joseph C. Ranftl, Los Angeles, Calif.

### BETA

Dennis Howard Smith '64 to Ellen Fisher, Aug. 29, 1964.  
Neil Alan Hull '63 to Eva Bird, Sept. 5, 1964.  
Huber Leyland Graham '64 to Lois Wrigley, Sept. 6, 1964.

### DELTA

James D. Coffee '62 to Elaine Grant of Westfield, N. J., June 20, 1964.

### ETA

Brooks Anthony (Tony) Nicholson '64 to Norma June Wrigley on Oct. 3, 1964 at the Cathedral of Christ the King, Atlanta.

### KAPPA

John O. Hamel '58 to Gloria Gehl Selsing, Aug. 1964.  
Jonathan T. Stoddard '64 to Doris Jane Laufenber, Aug. 22, 1964.

### MU

Douglas H. Dean '62 to Linda Woods on April 11, 1964.  
Charles David Hogan '64 to Sheila Albright on June 13, 1964.  
William Jacobus '64 to Rita Bosica on Aug. 29, 1964.  
Karl J. Swyler '64 to Pat Kaufman on Aug. 22, 1964.

### OMEGA

David A. Maner '64 to Linda Ann Criger of Eastman, Ga., on Aug. 9, 1964.

## Pledges, Continued

### ETA DELTA (10)

William R. James, Inglewood, Calif.  
Neal Lee Rogers, Long Beach, Calif.  
William H. Bremer, Rolling Hills, Calif.  
Robert L. Edwards, Hawthorne, Calif.  
Bruce Tognazzini, San Francisco, Calif.  
Walter Carruthers, Studio City, Calif.  
Jeffrey K. Brown, Los Angeles, Calif.  
Patrick W. Richmond, Arcadia, Calif.  
David Niebergall, Santa Monica, Calif.  
Gordon L. Medom, Santa Ana, Calif.

### THETA DELTA (5)

Michael Evans, Merritt Island, Fla.  
Dennis Jester, Lake Park, Fla.  
John Monroe, Jacksonville, Fla.  
Richard Richards, Watertown, Conn.  
James M. Williams, Pompano Beach, Fla.

### ALPHA THETA CHI (3)

Larry M. Ross, Omaha, Nebr.  
Paul E. Craig, Lincoln, Nebr.  
Herman F. Monnich, Jr., Wheat Ridge, Colo.

### ARIZONA COLONY (9)

Robert Bonfiglio, Iowa City, Iowa  
George W. Lane, Jr., Coolidge, Ariz.  
Lance F. Mann, Tarzana, Calif.  
Lynn C. Ruppert, Phoenix, Ariz.  
Stephen K. Steele, Tucson, Ariz.  
A. Nelson Swartz, Tucson, Ariz.  
Joe Thomas, Coolidge, Ariz.  
T. Douglas Nelson, Shaker Heights, Ohio  
Reuben R. Garza, Tucson, Ariz.

### AUBURN COLONY (4)

William R. Swenson, Jr., East Meadow, N. Y.  
Thomas L. Breedlove, Thomasville, Ga.  
Henry Grady Lance, Jr., Dalton, Ga.  
Richard T. Smith, Battle Creek, Mich.

## Alumni News

### GAMMA

W. A. PARKER, JR. '50, president of Beck & Gregg Hardware Co., Atlanta, was elected a member of the Executive Committee of the National Wholesale Hardware Assn., Oct. 21, 1964.

### EPSILON

HORACE C. LUKENS, JR. '64 is doing graduate work in chemical psychology at Bowling Green State University. He was married during the summer.

### IOTA

CHARLES FLETCHER '30, Kingsport, Tenn. has been associated with Tennessee Eastman since 1933. He is general superintendent of the firm which produces chemicals, textiles and plastics.

JAMES B. HECK '52, Columbus, Ohio was appointed Dean of Ohio State University's College of Education July 1, 1963.

ROBERT L. NICHOL '59 has formed his own firm of the same name offering a free lance interior consulting service. The firm is headquartered in Columbus, Ohio.

### KAPPA

E. L. BARRINGER '25 was recently promoted to Executive Editor of Hardware Age, Philadelphia, Pa.

### LAMBDA

JOHN H. BEVIS '48 and family recently returned from a year and a half assignment in Paris. He now resides at 176 Jordan Ave., San Francisco.

### XI

JAMES G. HARE '62 is managing the Atlanta office of Leonard Hicks, Inc., International Hotel Representative.

### ALPHA-TAU

ROBERT J. CANNING '39 has been appointed manager of General Electric Company's Financial Personnel Recruiting and Training Service. He resides in Greenwich, Conn.

### ALPHA-CHI

LT. JAMES W. STEVENS '62, San Antonio, toured Europe this past summer.

### ETA DELTA

DR. ROY L. LINDAHL '46 was recently installed as the President of the American Academy of Pedodontics. He joined the University of North Carolina faculty in 1952.

ROLAND E. SINK '48, LaCanada, California is a faculty member of the Pasadena City College.

RONALD S. SUGARMAN '62 K '63, 1033 S. Beacon Ave., Los Angeles, Calif., is associated with the John Fitzgerald Kennedy Library, Incorporated.

### IOTA DELTA

WILLIAM R. JONES '63, Plainfield, Ind., is associated with Eli Lilly and Co. as an industrial engineering analyst, following a six month tour of army duty.

## Births

### ALPHA

*Brother and Mrs. Dallas M. Kersey '64* announce the birth of a daughter, Debra Manyette, born March 25, 1964.

### ETA

*Brother and Mrs. William Y. Harvey '53* announce the birth of a son, Bourke, born May 1964.

*Brother and Mrs. Edward J. Nicholson, Jr. '55* announce the birth of a son, Scott Joseph, at Kennestone Hospital on Oct. 8, 1964.

*Brother and Mrs. Norman C. Schott '60* announce the birth of a son, Gregory, born July 17, 1964.

### GAMMA

*Brother and Mrs. Edwin W. Allen, Jr. '43* announce the birth of a daughter, Lena Catherine, born July 17, 1964.

### KAPPA

*Brother and Mrs. Walter O. Bredendick '59* announce the birth of a daughter, Shari, born June 1963.

### MU

*Brother and Mrs. Francis F. Holman '64* announce the birth of a son, Gregory, born November 13, 1964.

### NU

*Brother and Mrs. James D. Anderson '58* announce the birth of a daughter, Avery Denise, born Jan. 9, 1964.

### ZETA

*Brother and Mrs. Robert A. Renza '58* announce the birth of a son, Robert, Jr., born May 12, 1964.

### OMICRON

*Brother and Mrs. William L. Hoop '53* announce the birth of a son, Gregory, born April 20, 1963.

### OMEGA

*Lt. and Mrs. Harvard V. Hopkins, Jr. '60* announce the birth of a son, Harvard Vance, III, born April 14, 1964 at Rota, Spain where Lt. Hopkins is a guard officer at the Marine Barracks.

### ALPHA-ALPHA

*Brother and Mrs. John W. Weil '59* announce the birth of a daughter, Anna Woodfin, born Oct. 10, 1963.

### ALPHA-CHI

*Brother and Mrs. Jeffrey G. Ellinwood '62* announce the birth of a daughter, Karen Margaret, born Oct. 13, 1964.

### THETA DELTA

*Brother and Mrs. Pearson E. Cox '60* announce the birth of a son, Steven E., born Oct. 1963.

## In the Service



### GAMMA

*First Lieutenant Clinton C. Moore, Jr. '62*, Signal Mountain, Tenn. has been decorated with the U. S. Joint Service Commendation Medal at Pope AFB, N. C. He is assigned to a unit of the Air Force Communications Service at Pope.

*Captain Conway Woo '59*, Fresno, Calif. is assigned to Misawa AB, Japan. He joins the staff there to practice as a dentist.

### ETA

*Lt. Mumford T. Harley '63*, of Brunswick, Ga. has been commissioned a second lieutenant in the U. S. Air Force upon graduation from Officer Training School. Lt. Harley is now assigned to Sheppard AFB, Texas for training as a budget officer.

### SIGMA

*Lt. Richard E. Smith '62* of Rockford, Ill. has been commissioned a second lieutenant in the U. S. Air Force upon graduation from Officer Training School. He is now assigned to an Air Training Command unit at Lowry AFB, Colo., for training as an avionics officer.

### MU

*First Lieutenant Dennis L. Backus '59*, is an aerospace technologist at NASA's Goddard Space Flight Center in Greenbelt, Md. Since his assignment there in 1961, he has worked in the research and development of space communications in support of NASA's satellite programs.

*Second Lieutenant Stanley S. Rice '63*, Bradley Beach, N. J. is assigned to Lockbourne AFB, Ohio, for flying duty in a unit which supports the Strategic Air Command mission of keeping the nation's intercontinental missiles and jet bombers on constant alert.

### TAU

*Stanley B. Atkins '63*, Mobile, Ala., has been commissioned a second lieutenant in the U. S. Air Force upon graduation from Officer Training School (OTS) at Lackland AFB, Texas.

### CHI

*Second Lieutenant John E. Bailey '63* of Pinellas Park, Fla. has been awarded U. S. Air Force silver pilot wings upon graduation from flying training school. He is assigned to Dover AFB, Del. for flying duty.

*Captain James L. Meyers '59* of Shillington, Pa. is

assigned to Chambley AB, France. He joins the medical staff there to practice as a physician.

### OMEGA

*Lt. Arnold D. Amoroso '60*, APO-139, New York, N. Y., graduated from U. S. Army Aviation School, Ft. Rucker, Ala., Sept. 4, 1964 and will be promoted Captain in November 1964.

### ALPHA-ALPHA

*Ensign Michael H. Gilbert '63* was commissioned June 19, 1964 after completing Naval Officer Candidate School, Newport, R. I. He is assigned to the USS McCard (DD 822), Charleston, S. C.

### ALPHA DELTA

*Lt. Jesse D. Coolbaugh '57*, assumed command of USS Kemper County (LST 854), July 8, 1964. Homeport is San Diego, Calif.

### ALPHA-TAU

*Second Lieutenant Gerald R. J. Heuer '64*, Detroit, Mich., is receiving U. S. Air Force navigator training at James Connally AFB, Texas.

### ZETA DELTA

*Captain Albert W. Palmer '59* is a MATS Pilot. His address is Rt. 6, Box 404, North Charleston, S. C.

### THETA DELTA

*First Lieutenant Pearson E. Cox '60* is assigned to an Atlas Missile Combat crew at Shilling AFB, Kansas.

*Lt. Banks G. Prevatt '63* of Jacksonville, Fla., has been commissioned a second lieutenant upon completion of the U. S. Air Force Reserve Officer Training Corps summer encampment at Robins AFB, Ga.

*Airman Third Class Jack K. Thomas, Jr. '64* of Miami, Fla., graduated with honors from the technical training course for U. S. Air Force aircraft engine mechanics and is assigned to a Continental Air Command unit at Homestead AFB, Fla.

### RHO IOTA KAPPA

*Lt. William J. DiBattista '63* of Wakefield, R. I., has been commissioned a second lieutenant in the U. S. Air Force following graduation from Officer Training School.

## Chapter Eternal

### BETA

FREDERICK BERTINE GUEST '06, coal and lumber business, deceased, date unknown. Born Sept. 1, 1883, New Rochelle, N. Y. Initiated Dec. 18, 1902.  
CHARLES PERKINS MOAT '96, sanitary chemist, died March 6, 1964. Born Sept. 20, 1873, Portsmouth, N. H. Initiated Oct. 5, 1892.

### EPSILON

FRANCIS FITZGERALD THWEATT, JR. '21, retired medical director, died Aug. 13, 1964. Born March 25, 1899, Petersburg, Va. Initiated Sept. 25, 1917.

### ETA

TRAVIS OLIVER TABOR, III '39, Captain USN, of Bethesda, Md., formerly of Atlanta and Elberton, died Oct. 1964. Burial was in Arlington National Cemetery. Born June 10, 1918, Elberton, Ga. Initiated Jan. 15, 1936.

### KAPPA

JOHN LESTER REICHERT '17, Chicago pediatrician,

died Sept. 19, 1964. Born March 17, 1896, Slinger, Wisc. Initiated March 11, 1916.

WILLIAM THOMAS SCHWAAB '64 of Nashotah, Wisc., accidental death, funeral was Aug. 31, 1964. Born Oct. 6, 1943, Summit, Wisc. Initiated, Posthumously, Sept. 17, 1964.

### CHI

ALBERT HORNER, JR. '13, cannery business in Hawaii, deceased, date unknown. Born Oct. 28, 1891, Kula, Hawaii. Initiated Oct. 16, 1909.

### OMI

FRED ANDROS JONES '06, Judge, municipal court, died July 3, 1964. Born April 9, 1884, Stoneham, Mass. Initiated Nov. 21, 1902.

RICHARD EMMONS THURSFIELD '31, Dean of Indiana State University, died May 1, 1962. Born March 30, 1909, Tarrington, Conn. Initiated Oct. 18, 1928.

LUIS PEDRO TOMAS TORRELLA '55 of Havana, Cuba, died Oct. 31, 1962. Born Aug. 26, 1932, Havana, Cuba. Initiated Dec. 14, 1952.

### OMEGA

JOEL CHANDLER HARRIS, JR. '09, publisher, died Sept. 12, 1964. Born Feb. 5, 1888, Atlanta, Ga. Initiated Sept. 28, 1904.

### ALPHA DELTA

LYMAN GREEN SENER '21, salesman for the Ness Company, died July 21, 1964. Born March 15, 1898, York, Pa. Initiated May 10, 1924.

### ETA DELTA

ROBERT WESLEY WILCOX '34, sales promotion, died in 1955. Born May 19, 1911, Rochester, N. Y. Initiated April 7, 1934.

### ALPHA-PI (Vanderbilt)

ALEXANDER BETHEL CROW '24, lawyer, died June 4, 1964. Born April 30, 1901, Franklin, Ky. Initiated Oct. 17, 1924.



# OFFICERS AND ROLL

## Grand Officers

GRAND ALPHA: C. Moreland Thomas, HD '45; 9632 S. Lemoran Ave., Downey, Calif. 90240.  
GRAND ALPHA-ELECT: Joseph R. Dockery, Xi '28; Dockery Farms, R.F.D., Cleveland, Miss.  
GRAND BETA: Rev. John R. Long, Phi '59; 1222 North Franklin St., Pittsburgh, Pa. 15233.  
GRAND GAMMA: Richard C. Ham, L '33; 1600 International Bldg., 601 California St., San Francisco, Calif. 94108.  
GRAND DELTA: William W. Jeckell, I '34, 417 Ingram Drive, Cincinnati, Ohio 45218.  
GRAND EPSILON: William R. Kitchin, A '49; Box 731, Rye, New York.  
GRAND ZETA: Wyford D. Jones, A-X '34; 1600 Radnor Rd., Delaware, Ohio.  
GRAND ETA: E. Bates Block, G '40, H '42; 600 First National Bank Bldg., Atlanta, Ga. 30303.  
SCHOLARSHIP COUNSELOR: Charles W. Stoddart, Jr., AD '31; 331 W. Fairmount Ave., State College, Pa.  
RITUALISTIC COUNSELOR: Walter D. Fitzpatrick, Jr., Xi '59; 135 Day Hall, Cornell University, Ithaca, N. Y. 14850.  
NATIONAL DIRECTOR: Carl J. Gladfelter, A-T '33, ZA, IA, 3330 Peachtree Rd., N.E., Rm. 550, Atlanta, Ga. 30326.  
NATIONAL DIRECTOR EMERITUS: L. Z. Rosser, O '08, H '08, I '09, O '37, A-M '39, Z '54, IA '58, Georgian Terrace Hotel, Atlanta, Ga. 30383.  
OFFICE OF THE COUNCIL: 3330 Peachtree Rd., N.E., Rm. 550, Atlanta, Ga. 30326.

## Regional Chairmen

NEW ENGLAND AND NORTHERN NEW YORK: John A. Tallor, Zeta Delta '57, New Sparrowbush Rd., R.D. 1, Cohoes, N. Y.  
MID-ATLANTIC: Joseph S. Cornell, Rho '36, 21 Prospect Hill Ave., Summit, N. J.  
SOUTHERN: Charles M. Davis, Omega '55, 174 Peachtree Battle Ave., N.E., Atlanta, Ga. 30305.  
NORTH CENTRAL STATES: Maynard R. Andraea, Alpha-Tau '32, Syncro Corp., Oxford, Mich.  
WEST COAST: Merritt W. Truax, Epsilon Delta '33, Truax Oil Co., 205 Columbia St., Salem, Oregon.

## Chapters

(A)-ALPHA (1859)—University of Virginia, 161 Rugby Rd., University, Va.  
Chapter Adviser—J. Campbell Clark, Jr., A '50, 1332 Rugby Rd., Charlottesville, Va.  
Council Representative—William R. Kitchin, A '49, Box 731, Rye, N. Y.  
Alpha—W. Reese Smith.  
(B)-BETA (1873)—Massachusetts Institute of Technology, 32 Hereford St., Boston 15, Mass.  
Chapter Adviser—None.  
Council Representative—Frederick B. Grant, B '39, Box 186, Wellesley Hills 31, Mass.  
Alpha—Werner A. Bleyer.  
(C)-GAMMA (1869)—Emory University, 8 Fraternity Row, Atlanta 22, Ga.  
Chapter Adviser—William F. Morgan, G '57; 70 Lake Forrest Lane, N.E., Atlanta, Ga. 30305, and W. Paul Westbrook, Jr., G '56, c/o The Bank of Georgia, Atlanta, Ga. 30303.  
Council Representative—William A. Haywood, I '00, 1002 Georgia Savings Bank Bldg., Atlanta, Ga. 30303.  
Alpha—Charles E. Shepard, G '17, 739 W. Peachtree St., Atlanta, Ga.  
Alpha—F. Scott Singleton.  
(D)-DELTA (1867)—Rutgers University, 95 College Ave., New Brunswick, N. J.  
Chapter Adviser—Robert H. Morris, D '50; 1303 Kearney Ave., North Brunswick, N. J.  
Council Representative—Louis Wolfson, A '38, 257 Livingston Ave., New Brunswick, N. J.  
Alpha—Thomas J. Lindsey.  
(E)-EPSILON (1867)—Hampden-Sydney College, Chi Phi House, Hampden-Sydney, Va.  
Chapter Adviser—Prof. Robert T. Hubard, Jr., E '35; Hampden-Sydney College, Hampden-Sydney, Va.  
Council Representative—John Bruce James, Jr., E '53, 5502 Toddsbury Rd., Richmond, Va.  
Alpha—Joseph E. Agsten.  
(Z)-ZETA (1854)—Franklin & Marshall College, 603 Race Ave., Lancaster, Pa.  
Chapter Adviser—David S. Watt, Z '41; 1628 New Holland Pike, Lancaster, Pa.  
Council Representative—None.  
Alpha—Dennis S. Buchan.  
(H)-ETA (1867)—University of Georgia, 290 S. Lumpkin St., Athens, Ga.  
Chapter Adviser—The Rev. A. Dawson Teague, Jr., G '52, Ome '52, H '52, 328 Dearing St., Athens, Ga.

Council Representative—John H. Clifton, H '53, 15 Peachtree St., Rm. 924, Atlanta 3, Ga.  
Alpha—James R. McClelland, III.  
(O)-THETA (1878)—Rensselaer Polytechnic Institute, Sage Ave. and 15th St., Troy, N. Y.  
Chapter Adviser—Henry E. Lindquist, O '49, 957 Spring Ave., Troy, N. Y.  
Council Representative—Frederick M. Tibbitts, O '29, Tri-City Produce Co., Inc., Railroad Ave. and James St., Albany 5, N. Y.  
Alpha—Frank T. Coughlin.  
(I)-IOTA (1883)—Ohio State University, 2000 Indianola Ave., Columbus, Ohio.  
Chapter Adviser—Frank A. Fiori, I '63; 1530 King Ave., Columbus, Ohio 43212.  
Council Representative—None.  
Alpha—Donald C. Perry.  
(K)-KAPPA (1916)—University of Wisconsin, 200 Langdon St., Madison, Wis.  
Chapter Adviser—Richard L. Allen, K '62; 621 Constitution Lane, Madison, Wis. 53711, and Warren F. Turner, Jr., K '57; 514 Orchard Drive, Madison, Wis. 53705.  
Council Representative—Robert W. Ela, K '39, 8 Fuller Court, Madison 4, Wis.  
Alpha—Edward Rogan, II.  
(A)-LAMBDA (1875)—University of California, 2722 Durant, Berkeley, Calif.  
Chapter Adviser—Alan P. Fraser, L '53; 210 Bank of America Bldg., Berkeley, Calif. 94704.  
Council Representative—Parker F. Wood, Jr., A '35, 320 Family Farm Dr., Woodside, Calif.  
Alpha—Frank E. Murnane.  
(M)-MU (1883)—Stevens Institute of Technology, 801 Hudson St., Hoboken, N. J.  
Chapter Adviser—Thomas C. Petty, M '43; 170 Wellington Rd., Garden City, L. I., N. Y.  
Council Representative—Walter V. Knopp, M '44, 302 Sunset Blvd., Wyckoff, N. J.  
Alpha—Daniel A. Peck.  
(N)-NU (1892)—University of Texas, 2518 Leon St., Austin, Texas.  
Chapter Adviser—R. Frank Siddons, Jr., P. O. Box 956, Austin, Texas.  
Council Representative—Dr. Robert B. Morrison, N '33, 801 Capital National Bank Bldg., Austin, Texas.  
Alpha—Joseph M. Lostracco.  
(Z)-XI (1868)—Cornell University, 107 Edgemoor Lane, Ithaca, N. Y.  
Chapter Adviser—W. Daniel Fitzpatrick, Jr., Xi '59; 135 Day Hall, Cornell Univ., Ithaca, N. Y.  
Council Representative—A. H. Hutchinson, Z '09, 5701 S. Claremont Ave., Chicago 36, Ill.  
Alpha—Charles A. Koons, Jr.  
(II)-PI (1952)—Northwestern University, 550 Lincoln St., Evanston, Ill.  
Chapter Adviser—Philip M. Guzzetta II '57, 3309 Thornberry Dr., Glenview, Ill.  
Council Representative—H. Frank Hartel, Z '51, II '51, 116 Robsart Rd., Kenilworth, Ill. 60043.  
Alpha—Anthony N. Zaugh.  
(P)-RHO (1874)—Lafayette College, Vallamont, Easton, Pa.  
Chapter Adviser—Bruce Drinkhouse, P '50; 14 Hamilton St., Easton, Pa.  
Council Representative—R. T. Schaller, P '40, P. O. Box 29, Easton, Pa.  
Alpha—Robert L. Wise.  
(Z)-SIGMA (1912)—University of Illinois, 303 E. Chalmers St., Champaign, Ill.  
Chapter Adviser—Robert E. Fulton, S '19; 908 West Hill St., Champaign, Ill.  
Council Representative—Nolan N. Hodges, S '37, 625 E. Green St., Champaign, Ill.  
Alpha—Ronald D. Lipinski.  
(T)-TAU (1920)—University of Alabama, Box 1265, University, Ala.  
Chapter Adviser—Donald G. Porch, T '36; 145 Woodland Hills, Tuscaloosa, Ala.  
Council Representative—Tom Russell, T '25, Alexander City, Ala.  
Alpha—Marion L. Hughes.  
(F)-PHI (1873)—Amherst College, Amherst, Mass.  
Chapter Adviser—Prof. Elmo Giordanetti, Amherst College, Amherst, Mass.  
Council Representative—Prof. Willard L. Thorp, Phi '20, American Embassy, USRO-APO-230, New York, N. Y.  
Alpha—F. Edward Potter.  
(X)-CHI (1902)—Dartmouth College, Chi Phi House, 11 E. Wheelock St., Hanover, N. H.  
Chapter Adviser—Calvin E. Knights, X '51, Norwich, Vt.  
Council Representative—Harold S. Fuller, X '12, Main St., Hancock, N. H.  
Alpha—J. Donald Cohon, Jr.  
(V)-PSI (1872)—Lehigh University, Sayre, Park, Bethlehem, Pa.  
Chapter Adviser—John K. Conneen, Psi '30, 701 E. Third St., Bethlehem, Pa.  
Council Representative—L. W. Mendenhall, Psi '29, 1011 E. Rittenhouse St., Philadelphia, Pa.  
Alpha—Bernard R. Feick, Jr.  
(O)-OMEGA (1904)—Georgia Institute of Technology, 720 Fowler St., N.W., Atlanta, Ga. 30313.  
Chapter Adviser—Marshall J. Weilborn, Jr., Ome '54; 1916 Collard Dr., N.W., Atlanta, Ga. 30318.  
Council Representative—Charles M. Davis, O '55, 174 Peachtree Battle Ave., N.W., Atlanta, Ga.  
Alpha—Richard J. Wigh.  
(A-A)-ALPHA-ALPHA (1924)—University of North Carolina (Re-established former Alpha Chapter, 1858-1868), 300 S. Columbia St., Chapel Hill, N. C.

Chapter Adviser—Dr. Robert J. Senior, Z '49, Lennox Bldg., Chapel Hill, N. C.  
Council Representative—J. Maryon Saunders, A-A '25, West University Dr., Chapel Hill, N. C.  
Alpha—Richard T. Stone.  
(A-T)-ALPHA-TAU (1882)—University of Michigan, 1530 Washtenaw Ave., Ann Arbor, Mich.  
Chapter Adviser—Charles L. Smith, A-T '54; 2766 Colony Rd., Ann Arbor, Mich.  
Council Representative—George L. Sawyer, A-T '24; 6911 Alden Dr., Union Lake, Mich.  
Alpha—M. Douglas Dunn.  
(A-X)-ALPHA-CHI (1873)—Ohio Wesleyan University, 216 N. Franklin St., Delaware, Ohio.  
Chapter Adviser—Wyford D. Jones, A-X '34, 1600 Radnor Rd., Delaware, Ohio.  
Council Representative—Dr. M. S. Cherington, A-X '18, 18 W. Winter St., Delaware, Ohio.  
Alpha—Josip R. Galetovic.  
(A-D)-ALPHA DELTA (1924)—Penn State University, 360 E. Hamilton Ave., State College, Pa.  
Chapter Adviser—Charles W. Stoddart, Jr., AA '31, 331 W. Fairmount Ave., State College, Pa. and Prof. Jack H. Vincent, AA '35, Pennsylvania State Univ., Boucke Bldg., University Park, Pa.  
Council Representative—James A. Dunlap, AA '54, 518 Delancey Circle, Devon, Pa.  
Alpha—Sidney J. Wheeler.  
(I-D)-GAMMA DELTA (1928)—University of Minnesota, 315 19th Ave., S.E., Minneapolis, Minn.  
Chapter Advisers—Harold R. Gabrielsen, I'D '32, 5537 11th Ave., So., Minneapolis, Minn. and Joseph Leicht, III, G D '60; 3146 W. Calhoun Blvd., Minneapolis, Minn. 55416.  
Council Representative—Robert A. Lesch, I'A '50, 3041 Park Ave., Minneapolis 7, Minn.  
Alpha—Thomas G. Neutzing.  
(E-D)-EPSILON DELTA (1931)—Oregon State College, 2535 Taylor, Corvallis, Ore.  
Chapter Adviser—David P. Paine, E D '52; 244 Bridgeway, South, Corvallis, Ore.  
Council Representative—Felix F. Fors, E D '24; 557-A Ave., Oswego, Ore.  
Alpha—David W. Nutter.  
(Z-D)-ZETA DELTA (1956)—University of Connecticut, Storrs, Conn.  
Chapter Advisers—Thomas N. Carmody, Z D '54; 15 Farmstead Lane, Simsbury, Conn. and Dale C. Martin, Z D '55; Old Stone Rd., R.F.D. 1, Vernon, Conn.  
Council Representative—Anthony J. Dalessio, ZA '56, P. O. Box 757, Norwalk, Conn.  
Alpha—Ron Massey.  
(H-D)-ETA DELTA (1934)—University of Southern California, 720 West 28th St., Los Angeles 7, Calif.  
Chapter Advisers—William H. Hare, H D '60; 5243 Buffalo Ave., Sherman Oaks, Calif. and Ronald R. Anderson, H D '60, 1333-11th St., Santa Monica, Calif.  
Council Representative—John D. McPherson, H-D '50, 424 3rd St., Manhattan Beach, Calif.  
Alpha—D. Carl Bergan.  
(O-D)-THETA DELTA (1935)—University of Florida, 1225 S.W. Second Ave., Gainesville, Fla.  
Chapter Adviser—Col. Thomas A. Graham, Jr., ThD '37, 1705 N.W. 61st Ter., Gainesville, Fla.  
Council Representative—Dr. Howard V. Weems, Jr., I '44, O-D '48, 2100 N.E. 6th Terrace, Gainesville, Fla.  
Alpha—Charles D. Fleming.  
(I-D)-IOTA DELTA (1958)—Indiana University, 1400 N. Jordan, Bloomington, Ind.  
Chapter Adviser—Carmen Della Bella, D '49; 6368 Green Leaves Rd., Indianapolis, Ind.  
Council Representative—Robert E. Secor, K '35, I'D '58, 6920 N. Park Ave., Indianapolis, Ind.  
Alpha—Jon C. Estes.  
TAU DELTA (1962)—University of Oregon, 1057 Patterson St., Eugene, Ore. 97402.  
Chapter Adviser—Wilbur Weed, E-D '21, 680 Chestnut, Eugene, Ore. 97402.  
Council Representative—Paul J. Ryan, E-D '32, 28 W. 22nd St., Eugene, Ore.  
Alpha—Bruce P. Babbitt.  
RHO IOTA KAPPA (1962)—University of Rhode Island, 61 Upper College Road, Kingston, R. I.  
Chapter Adviser—Prof. William O. Jones, University of Rhode Island, Kingston, R. I.  
Council Representative—Jim Shaw, PIK '23; 15 Cherry Lane, Wakefield, R. I.  
Alpha—Raymond Palombo.  
ALPHA THETA CHI (Re-Chartered 1964)—University of Nebraska, 1345 - R - Street, Lincoln, Neb.  
Alpha—Sam Mills Samuelson.  
Chapter Adviser—Sandor Babos, Z '60; 1440 North 60th, Lincoln, Neb. 68505.  
ARIZONA COLONY—University of Arizona, 951 East 10th St., Apt. 21, Tucson, Arizona.  
Alpha—Peter Matthews.  
Chapter Adviser—Theodore W. Kramer, III, M '39, 6826 Topke, Tucson, Arizona.  
Council Representative—John H. Matthews, A-X '38, 5262 Mission Hill Drive, Tucson, Arizona 85718.  
AUBURN COLONY (Auburn University).  
Activator—James C. Parker, T '62, 114 W. Glenn Ave., Auburn, Alabama.  
DELTA XI COLONY (West Virginia Wesleyan College).  
Activator—Frank L. Bialon, 67 W. Kanawha St., Buckhannon, W. Va.

The December 1964  
**CHAKETT**

SECOND CLASS POSTAGE PAID  
 AT ATLANTA, GEORGIA

POSTMASTER: Please send Form 3579 for undeliverable copies  
 to: Chi Phi Fraternity, 3330 Peachtree Road, N.E., Suite 550  
 Atlanta, Georgia 30326

# Triumph of the Jewelers Art

YOUR BADGE — a triumph of skilled and highly trained Balfour craftsmen is a steadfast and dynamic symbol in a changing world.

- Plain badge .....\$10.00
- Miniature enameled Chi, crown set pearl Phi ..... 13.25
- Monogram recognition button .....\$1.25
- Pledge button ..... 1.25
- Pledge pin ..... 1.50

10% Federal tax and any state or city taxes are in addition to all prices quoted.

Insignia listed is carried in stock for IMMEDIATE SHIPMENT.

OFFICIAL JEWELER TO CHI PHI



Write for complete  
 insignia price list



*L. G. Balfour Company*  
 ATTLEBORO MASSACHUSETTS

IN CANADA L. G. BALFOUR COMPANY, LTD. MONTREAL AND TORONTO

**NOTICE OF ADDRESS CHANGE**

Name \_\_\_\_\_ Chapter \_\_\_\_\_

New Address (Street) \_\_\_\_\_

(City, State) \_\_\_\_\_

Date this address will be in effect \_\_\_\_\_

Old Address (Street) \_\_\_\_\_

(City, State) \_\_\_\_\_

Mail your change of address to: Chi Phi Fraternity  
 Suite 550  
 3330 Peachtree Road, N.E.  
 Atlanta 26, Georgia

**Moving?**

We can't reach you if you don't reach us. Have we your latest address?