

# Campus Radicals Fewer Now

## Phillips Oil Executive Comments in July Philnews

BY W. F. MARTIN  
Chairman and Chief Executive Officer,  
Phillips Petroleum Company

All of us should care about the quality of education on our college campuses and the attitudes and behavior of today's students.

From these students we recruit the geologists who will find tomorrow's oil and gas fields, the chemists and other scientists who will help maintain our company's leadership in research and development, the engineers who will find new operating efficiencies and build new facilities, and many other trained people who will guide the company in future years.

During the past school year alone, we hired about 300 new college graduates, many with advanced degrees.

We see and hear many indications that today's students are more serious and concerned about their individual futures, as well as less anti-business in their attitudes, than their older brothers and sisters in the late '60s.

It appears the era of negativism is behind us.

My attention was focused on the new campus attitudes and behavior when I and a number of other Phillips executives visited Kansas State University to participate in a "Professor for a Day" program earlier this year. It was an enlightening experience.

In my period in the classroom, I was impressed by the students' interest in current issues and their high degree of awareness of our nation's energy problems and of the necessity for finding solutions. There were a few critical, though not unfriendly, questions but the students really listened to our answers, and their minds obviously were open to explanations different than the talk they have heard elsewhere.

Generally, we found the students more knowledgeable about the world around them than when we were in school ourselves.

Of course, those of us involved in college visitation programs recognize that we are being exposed primarily to students who, by nature of their studies, have made career choices and are success-oriented. They therefore tend to have favorable attitudes about business.

Nevertheless, our company recruitment people tell us that our impressions of the campus are generally correct... that today's students as a whole are better informed and more career-oriented. They also point out that even when confrontation, demonstration, and campus violence filled the news media in the late '60s, the bulk of the nation's students were not radicals.

Campus radicals were a tiny minority then. There are fewer now.

It is reassuring to know that the students on campus today who will be leading Phillips and other Americans industrial companies in the future, retain, in the main, the basic values that have made our private enterprise economy the world's leader.

# THE CHI PHI CHAKETT

DECEMBER 1975

## 1975 is a Year of Activity For Trust; Contributions for Year Over \$28,000

### Seven-Man Board Selects Trustees

During the fiscal year ending July 31, 1975 the Trustees awarded scholarships to thirteen Brothers totaling \$5,150.00. Members of twelve chapters received scholarship awards. During the same period \$11,869.00 was lent to 29 different Brothers. All of the borrowers signed notes bearing 5% interest. The notes require that repayment commence 90 days after graduation. Unlike the Federal Government financed student loan program, the loans with few exceptions are being paid on time.

Last year, two chapters, Tau, University of Alabama and Lambda, University of California, Berkeley received library grants, thereby, permitting the chapters to adequately build and furnish existing rooms as a library and study facility.

Contributions to the Trust during the past year totaled in excess of \$28,000. Income from investments and loans yield approximately \$12,000. At the time of the preparation of this brief historical account and review of last years' activities, the audit report for the year ending July 31, 1975 was not complete. The annual report will be published in the February Chakett.

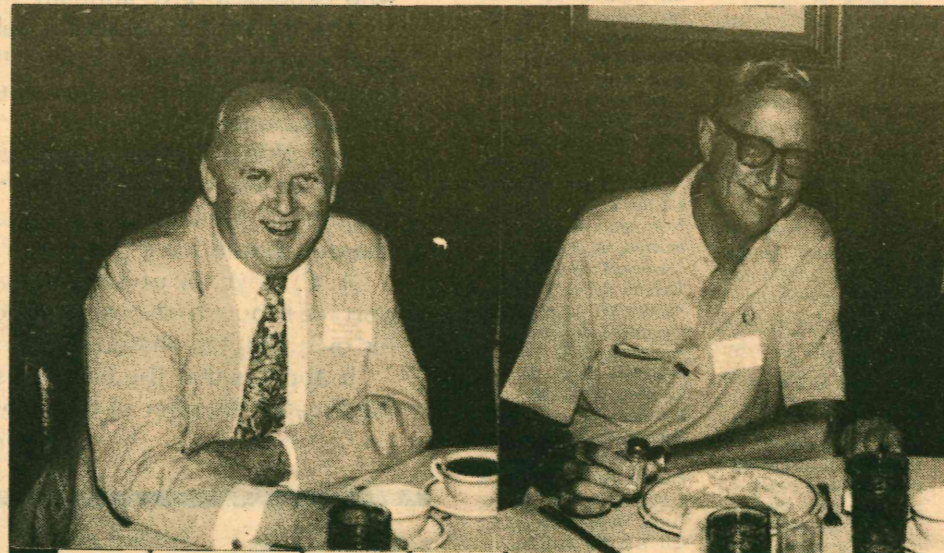
The Chi Phi Educational Trust was established September 8, 1930. The committee formed to organize the Trust consisted of Dr. Theodore B. Appel, Earle Reynolds, Albert W. Torbet, D. D. Craft and Phil Schiesswohl. The committee actually functioned as the original Trustees of the Trust.

At the same time, a Board of Governors of the Chi Phi Educational Trust consisting of seven members of the Fraternity was created. Five of the seven Board members are elected by Congress to serve a term of two years with the Grand Alpha and Grand Eta serving as Ex-officio members. The Grand Alpha is the Ex-officio chairman. Primarily the Board of Governors is responsible for electing the Trustees of the Trust who serve for five years on a staggered basis.

Article II of the Trust Indenture essentially states the purpose of the Trust to be:

The trust estate and the net income arising therefrom shall be used and expended by the Trustees solely for the following educational and charitable purposes:

(Continued on page 8)



Trustees Jessup (Eta Delta) and Fraser (Eta) relax prior to the August meeting of the Trust in Asheville.

## Western World Should Learn from Error of Its Ways, Says Upgren

Dr. Arthur R. Upgren, Kappa '20 Tau '20, a well known economist, lecturer and writer residing in Pompano Beach, Florida voiced this opinion in the *Miami (Florida) Review* and *Daily Record of November 3*. His editorial is reproduced in full.

Inflation is widespread over much, much of Europe, and this fact was confirmed after a six week trip from Scandinavia to Greece and Turkey.

Reducing the effects to much simpler terms: For instance, the ubiquitous "gin and tonic" at an Esso Motor hotel in Sweden cost \$5.40, a martini at the same place was priced at \$3.25 and an incendiary called Akavit (but only 7/8ths of an ounce) came to \$2.25.

For those on the distaff side, a shampoo, set and manicure in both Copenhagen and Milan, Italy, was \$21.50 plus tip. By way of contrast, the same service in Pompano Beach would cost \$8.50 plus tip.

Not until we got to Greece did hotel rooms come under \$40. In Stockholm's prestigious Grand Hotel, the room price ranged from \$40 with a view of the roof to \$70 with a view of the King's Palace and the lake alongside it.

Coca Cola was typically \$1 or more.

Large soda water was up to \$1.80. Meals, which were excellent, on trains cost \$11 and generally over \$9 in hotels.

These are the specifics of inflation which averages higher in Europe (except for Germany) than in the United States.

Belgium is having a great struggle over its complete policy of "indexation" of wages and incomes. This has led to a steady promotion of increasing inflation. But since it offers some immediate relief, labor unions fight for its continuation.

Britain faces a prospective budget deficit of \$24 billion. For that country's gross national product that constitutes a greater deficit than our expected deficit of \$80 billion for the fiscal year ending June 30, 1976.

Furthermore, five power plants in Britain are being closed down because the demand for electricity in the island nation has fallen off a full 10 per cent.

What all this leads to is that the Western world has two lessons, most difficult ones, to learn.

The first is that a nation cannot, even by monetary means, enjoy more than it can produce.

The second is that governments if they want to exist in the future cannot safely continue to run up horrendous deficits.

## Barnes and Hoover are Chi Phi's Sesquicentennial Artists

The 150th Logo used so extensively this past year in conjunction with the Anniversary celebration was designed by Gordon A. Barnes '59, a member of Gamma Delta at the University of Minnesota. Brother Barnes

is Director of the Visual Arts Centre, Seneca College of Applied Arts and Technology, King City, Ontario, Canada. In June 1974 he helped direct the World Crafts Council meeting in Canada which brought 1200 people from 47 countries.

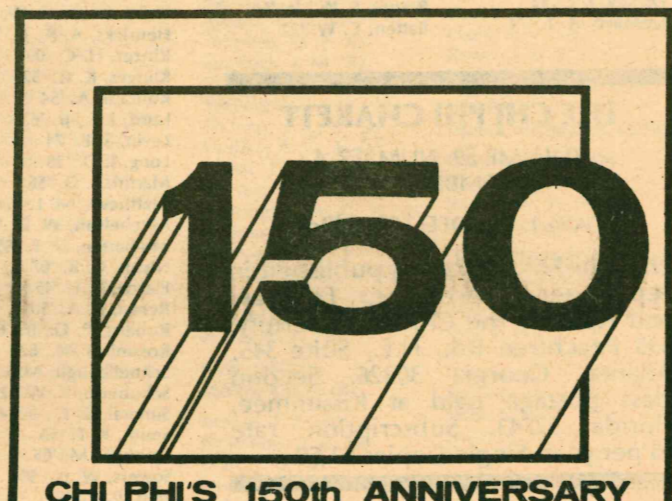
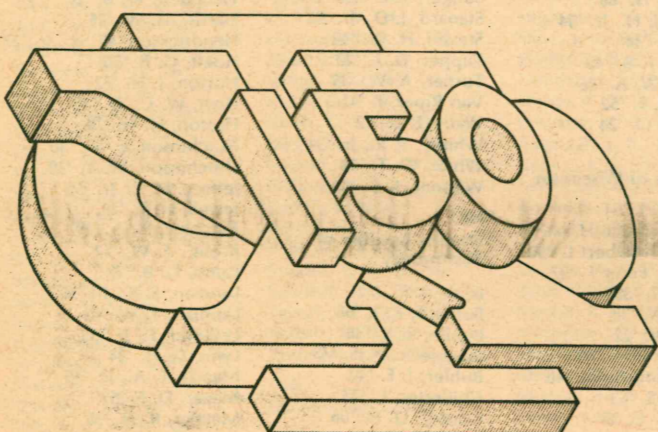
Brother S. Todd Hoover '67, a Chi Phi alumnus from the Indiana University chapter, designed the art work on the cover of the 150th Anniversary Album which currently is on sale through the National Office.

The interesting design and excellent art work are not new to Brother Hoover, since he is an art teacher and the Art Department Head of the South Bend, Indiana School Corporation. He was initiated into the Iota Delta chapter of Chi Phi in 1964. After receiving his undergraduate degree from Indiana University he completed work on his M.A. in 1971 at Notre Dame.

Todd's art work has appeared in a host of museums and art shows throughout the United States. He has won numerous awards and accolades throughout the country for his pieces of work.

Todd resides in South Bend with his wife, Bonny and their three year old son, Clark Brian.

The fraternity is most indebted to these two artistic Brothers for their creative designs for the Fraternity.



CHI PHI'S 150th ANNIVERSARY







Chef Roaciano G. Baytan, chef and master of the kitchen at Pi chapter for more than a decade, is honored posthumously.

# CHAPTER LETTERS

## Kappa

University of Wisconsin

### Chapter Rises to Position of Strength

The chapter has been very active over the past year. It has come from a dormant period a few short years ago to one of the strongest fraternities on campus. The brothers of the early 1970's have seen the chapter grow substantially. Last year's pledge class was made up of 18 men. Fraternity rush went very successful, and will undoubtedly continue in the future for our chapter.

The chapter house itself has gone through a period of change. A few years ago, boarders were needed to fill up the house. This year, we have several members wanting to move into an already full house. The meal program is successful with an excellent cook reminding you of your own home. There are few complaints. There is a new sign outside of the house, featuring the Chi Phi crest. There is a new television set and a new football table for outside entertainment. Living in the Kappa house is an experience in itself.

The social program is also a success. We were a smaller house a few years ago, but according to most sororities, we have really made a turnaround. They always have a better time at Chi Phi. We had a variety of parties this past year. A Casino date party has been a tradition at Kappa. Gambling (with play money, of course) can be very different for the young Chi Phi. A Country Hoedown with a Square Dance caller was a big hit. Dress up parties were immensely popular. A 1950's rock and roll party was complete with a disc jockey. A 1920's gangster party was complete with pinstripes and flappers along with nostalgia at its best. The young Chi Phi wonders what the dress was really like in those days. A Welcome Home Hank Aaron party was complete with a trip to the opening day ballgame of the Milwaukee Brewers. A summer retreat in July was a great opportunity to see the brothers in the off season.

Sports have also played an intricate part in our chapter. This year we are involved in sports more than ever. Our softball team took first place in our division. Basketball, swimming, soccer, and other sports have put us in the first few spots on campus as sports leaders. We are competing with all the other fraternities.

(Continued on page 8)

Miller, P. C. '70  
Risdal, T. R. '70  
Romig, R. E. '32  
Sawyer, R. E. '36  
Shepard, F. E. '23  
Wilkinson, H. E. '17  
Winter, L. A. '16

### ALPHA-PI Vanderbilt University

Anglin, B. C. '38  
Brubaker, B. E. '34  
Hasting, J. F. '26  
Holt, G. E. '25  
Kendall, A. C. '25  
Oliver, R. L. '23  
Overley, K. L. '37  
Owsley, L. H. '37  
Scoggin, V. G. '34  
Shaver, C. E. '29

### DELTA DELTA University of California at L. A.

Bassell, R. C. '34  
Blake, J. E. '39  
Brooks, K. H. '41  
Glade, H. D. '32  
Jueneman, F. R. '33  
Osborn, H. B., Jr. '36  
Page, G. D., Jr. '40  
Reynolds, G. W. '42  
Roach, W. A. '32  
Terreau, G. E. '54  
Weisenburg, L. E., Jr. '40

### ZETA DELTA University of Connecticut

Borland, J. B. '61  
Coady, K. J. '71  
Crawshaw, W. R. '61  
Dalessio, A. J. '56  
Fanelli, N. A. '61  
Haugland, O. S. '56  
Heiser, J. V. '57  
Herzog, L. A. '61  
Klopfenstein, R. C. '59  
Knurek, E. T., Jr. '66  
Pilvenis, R. G. '60  
Presutti, R. L. '51  
Reynolds, T. P. '57  
Seaman, D. T. '67  
Simons, S. B. '59  
Snyder, V. E. '64  
Stockman, K. B. '62

### KAPPA DELTA University of Rochester

MacDonald, G. M. '71

### LAMBDA DELTA University of Arizona

Bailey, E. G. '67  
Morford, J. W. '68

### TAU DELTA University of Oregon

Barclay, R. D. '69  
Catherwood, D. W. '66  
Clark, B. L., Jr. '68  
Keudell, D. J. '63  
Stahl, R. K. '70

### SIGMA-WOFFORD Wofford College

Magness, I. B. '07

### PI DELTA West Virginia University

Butler, D. C. '70  
Felice, J. P. '70  
Greenwald, E. H., Jr. '71  
Lantzy, W. P., III '70  
McMullen, J. G. '70  
Pool, S. H. '75  
Roberts, C. C., III '71  
Thomas, R. S. '69

### RHO DELTA Oglethorpe University

Burnette, R. F. '68  
Fittipaldi, J. J. '72  
Kise, W. M. '69  
Roberts, D. E. '70  
Sims, J. S. '68

### SIGMA DELTA University of California at Davis

Black, R. D. '71  
Cotton, A. L. '69  
Galloway, R. L. '72  
Hansen, W. H. '73  
Hayden, S. G. '72  
Magura, L. M. '69  
Scaramella, H. P. '70  
Spurgeon, T. L. '72  
Tanaka, C. S. '72  
Torrey, D. R. '74  
Young, S. W. '73

### PHI DELTA University of Tennessee

Briggs, W. T. '70  
Fowler, E. W., Jr. '73  
Hoffman, J. M. '70  
Proctor, R. W. '70  
Spear, D. J. '69

### PSI DELTA University of N.C. at Charlotte

Basinger, B. '71  
Hendley, J. J. '72  
May, P. M. '72  
Mayberry, M. G. '73  
O'Daniel, V. E. '73  
Parnell, E. L. '75  
Somerset, B. G. '73  
Wayson, E. O., Jr. '72

### OMEGA DELTA Morehead State Univ

Burton, M. J. '72  
Scheid, W. A. '70  
Sharp, W. W. '70

### ALPHA-MU Duke University

Bluefield, C., Jr. '43  
Bornheim, R. '53  
Dwight, J. L. '42  
Hewlett, J. D. '40

### ALPHA-PI Iowa State

Ayres, G. H. '27  
Bock, L. R. '29  
Boyd, J. H. '29  
Brown, N. E. '27  
Lorens, L. C. '24  
Meyer, R. E. '26

## Xi

Cornell University

### \$15,000 in Improvements Have Been Made on House

The Brothers at Xi came back this fall and found fifteen thousand dollars of improvements done to our house, Craigielea. A new boiler was purchased, and replaced one which had been in use for the past forty years. Also, a new floor was installed in our dining room. Greatly appreciated alumni-donations paid for the new floor. To finance the boiler, Xi obtained a loan from the Cornell University Board of Trustees. Any financial strain this loan may have caused was lessened by the fact that the house is at full strength with seventeen new initiates living at Craigielea this year.

The rush program is proceeding quite successfully, with rush chairman John Palmer organizing the thirty-six man effort. Several cleanups in the early part of the year got the eighty-five year old house in ideal condition for informal rush. Much work and effort by the brothers during our two smokers greatly paid off when no less than two hundred and thirty Freshmen visited Craigielea in two three-hour periods. The program also includes inviting Freshmen over for Tuesday and Thursday night dinners, Monday night football, and various parties throughout the year. The week of October 20, Freshmen turned in their fraternity preference cards and Chi Phi was honored by having the second highest number of cards among the forty-four fraternities.

Xi chapter was visited by nearly eighty alumni during Homecoming Weekend. Although Cornell went down to a disappointing 34-13 defeat at the hands of the Harvard Crimson, all was forgotten when steward Bob Kastner presented our one-hundred and ten guests with a delicious buffet dinner. Unfortunately, Homecoming wasn't exactly the same without the presence of one of our most distinguished alumni, Frederick W. Krebs '12, whose death this summer saddened brothers all over the country. "Fritz" had attended virtually all Homecomings since his graduation. He will be greatly missed by all.

The semester is now nearly complete and the brothers are looking forward to a long-awaited vacation. With things going as well as they are after the first semester, we are looking towards a successful second term.

## Pi

Northwestern University

### Chapter Chef is Recognized

The first weekend of November was a thoughtful as well as a triumphant one for Chi Phi at Northwestern University. Central to the occasion was a tribute to Mr. Rogaciano G. Baytan, who was our Chef and Master of the kitchen for over a decade. "The Chief's" past was indeed a colorful one.

"Ben" enlisted in the United States Navy as a young man while still in the Philippines and battled many cultural barriers to rise to a position of considerable responsibility, in spite of a minimum of formal education. His gift of frugality saw him parlay his Naval salary into considerable wealth in Cuba, only to have Castro's government take it all away. Mr. Baytan then had to work over 1000 miles away from his family in order to help support them. A person of great charisma, he is the reason that Pi Chapter flourishes today.

An engraved plaque that accompanies his photograph, dedicated before an audience of Alumni, Actives and Pledges reads, in part:

For 13 years, Mr. Rogaciano G. Baytan demonstrated selfless devotion to the men of Chi Phi at Northwestern University.

Our new bar room, heretofore to be known as the "Abusement Park," and all the pleasures associated with it, will be recognized as the Legacy of this unique individual.

Every Chi Phi fortunate enough to have experienced him will be inspired forever by his brash yet heartwarming character.

In addition, Alums and Actives contributed to a donation made to the American Cancer Society in Rogaciano's name, in an effort to help combat the killer that claimed his life last spring. We will never forget him.

In Homecoming float competition, Pi Chapter captured the first place trophy with our entry, "Kick your spirits up." Alumni from three states visited the house after the football game for the dedication, commemorative slide show, and some fluid socializing. That evening our Fall formal, held at the Playboy Club in downtown Chicago proved to be an unforgettable experience. Sunday afternoon, The Chi Phi intramural football team won the University's League 1 Championship. It was a memorable weekend here in Evanston, to say the least!

## Omega

Georgia Institute of Technology

### Outlook is Improved As Membership Rises

Prospering more than ever this fall, the Omega chapter completed a most successful rush program, pledging eighteen men into the fraternity. This increased our membership to fifty, with only four brothers due to graduate by the end of the school year.

We are equally as pleased with the number of renovations that have been completed around the house. Coming as a direct result of gifts from our alumni across Georgia, new tables and chairs for the dining room were obtained as well as new carpet laid in the upstairs halls and spiral staircase.

These improvements have generated great enthusiasm amongst the active brothers reflecting in our intramural competition, Homecoming activities, and involvement in other campus activities.

Two issues of the Omegaron, our chapter newsletter were issued in June and October. If you failed to receive your copy advise us and we will see that you receive a copy of the October issue and all future issues.

## Delta Xi

West Virginia Wesleyan

### Chapter Proving Itself In Sports Competition

Fourteen brothers returned to the Delta Xi chapter house on South Kanawha Street for the fall semester. We are currently making plans for house



Prominent as a backdrop for Kappa chapter's homecoming display is the new badge sign on the chapter house at the University of Wisconsin.

improvements—which are definitely a must. Although, we are left with one other alternative—the possibility of a new house. A meeting concerning this issue has been scheduled for November 22. Presiding at this meeting will be Brother Carl Gladfelter and President of the Alumni Association, James Okonak. Other Brothers anticipated to attend include the alumni of New Jersey and Pittsburgh. Hopefully this meeting will determine the specific action to be taken concerning this problem.

Last, as well as this semester, the brothers here have continued to prove their tremendous ability in the area of sports competition. Effort and determination on the part of each brother resulted in an overall victory in the "Greek Week" activities last spring. In addition to that feat, we also won the President's Cup. And believe me, it sure is a sight to see those two huge trophies together! In fraternity intramurals, we have won the majority of leagues.

We'd like to take the time to thank all of the Alumni Brothers who came down and contributed to making Homecoming a pleasurable weekend. Incidentally, the originality of our float "Gone With The Wind . . . And Rain" received honorable mention. "Hell's Angels", our formal rush party is scheduled for early December. As always, everyone is looking forward to this party. Sweetheart weekend will be held at the Wisp Lodge in Deep Creek, Maryland on the weekend of May 7-9. We are planning to make this weekend a large "Reunion" for all of our Alumni. Only with your participation, this weekend will become a success.

Five Wesleyan men are now pledging our fraternity, and are constantly proving their desire for this place! With the house parties, keggers, and social functions we've held this semester, many guys have been introduced to Chi Phi and have shown an interest toward our Brotherhood. We are expecting a large spring pledge class from all we have seen!

Our financial situation is currently unstable, but being we will have the mortgage on the house paid off next year, this situation will be better in the future. Any alumni contributions will be greatly appreciated. By the way, the phone number at the house is (304) 473-7056.

The Delt Xi chapter's doors are open to all Chi Phis. Whenever any of you are in the area, come in to say "Hello"!

## Iota Delta

Indiana University

Alan L. Goshart, Zeta

### Chapter Wins Presidency Of Student Body

At this point in the school year, our chapter is extremely strong. So far, this has been one of our busiest semesters.

Jay King, a senior from Logansport, Indiana was elected Student Body President of Indiana University in April, 1975. He will serve a one year term and for this annual term he is a member of Board of Trustees of Indiana University.

The chapter hosted a large number of parents on September 27. The Parents Club held their annual meeting, in addition to attending the Indiana-Utah football game.

Socially, we have been doing a great many things that we had been overlooking. These include singing to the sororities on campus and getting our name around. It really does the trick if you do it well! Also, we have started our little sister program once again and to attract the girls we have had such things as a barbecue and some of the brothers put on a skit just for them. These things were fun and the program has showed

marked rejuvenation. We have officially seventeen girls in the program, but there are always more coming over to see us. Also, the parties have been fantastic. Our Halloween party featured a live band with the chapter house fixed up in traditional Halloween decorations and the entrance resembling a grave yard. Our Christmas dance will be a dinner dance held at the local Ramada Inn.

Rush has been going strong. Since the spring semester is our weakest period, we have really been working hard to overcome this. We should have a strong pledge class in the spring.

As one can see, our semester is not over yet and we have done a great deal. Our chapter scrap book has already had many additions and before this semester is over it shall probably have many more.

## Beta Zeta

Florida Technological University

Troy D. Crumbaugh, Zeta

### House Remodeling Moves Along With Alumni Help

We are having a very active fall quarter. Thanks to the firm backing of the Florida Chi Phi Alumni Association our house remodeling is moving rapidly towards completion. The party-living room is in and the parking lot is being started this week.

We've had four big parties and our Mini-Weekend is coming up on November 14.

In intramural football our team fared surprisingly well. We finished the season with an exciting tie game that gave us a winning season. Our intramural volleyball team starts its season November 12 with Coach "Shug" Crumbaugh at the reins. The season continues until December 3.

Before concluding, we would like to thank our brothers who have joined the Order of Beta Zeta: Brothers Ralph A. Burt, B Z'74; Robert S. Cody, Th D'40 B Z'74; John A. DiMaggio, B Z'76; W. Erskine Ogden, Th D'42; Anthony F. Oz-zimo, B Z'74; Mark A. Salomon, B Z'74; Joel W. Sayers, Th D'42; Arch R. Updike, Jr., Th D'43; and Richard S. Wolken, B Z'75.

## Rho Delta

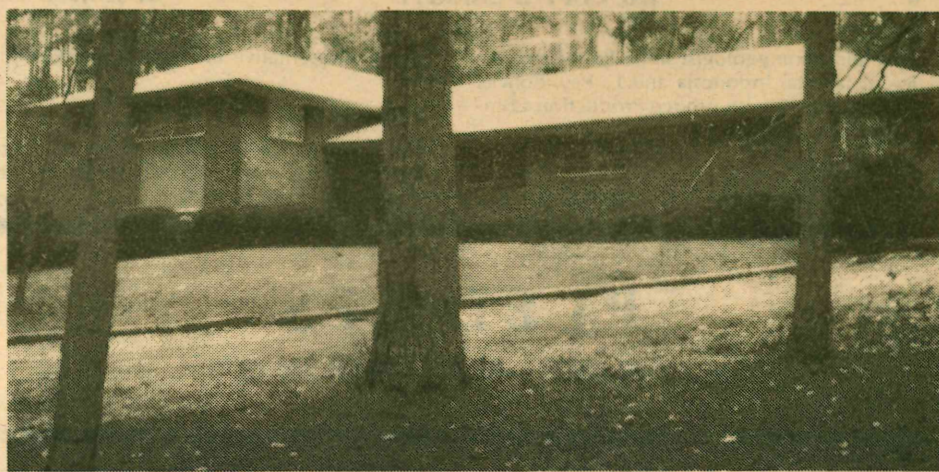
Oglethrope University

### Fund Raising Started For New Chapter House

The chapter undertook its greatest and most difficult task last spring. The brotherhood, which numbered eighteen, was losing its house at the end of the spring semester. A massive housing search was undertaken by every member of the chapter. A house suitable for our needs was finally located in May and negotiations were started on the house, which is located at 4753 Peachtree Dunwoody Rd., in early June, 1975.

We moved into the house on Sept. 1, after spending the entire summer negotiating the contract to secure the house. We negotiated a lease-purchase agreement subject to financing and zoning, and began moving the chapter's belongings into the house from a storage warehouse, where they were stored all summer.

We have undertaken a large fund raising campaign to raise the much needed down payment of approximately sixteen thousand dollars. So far we have raised about one third of the money by sponsoring concerts and through the generosity of Atlanta and chapter alumni who have made contributions to our cause. Our chapter alumni have been very generous, but they are young and their number is limited, so we are left with the task of raising the bulk of the money. We are planning several more fund raising proj-



Rho Delta chapter at Oglethorpe University now occupies this new home near the campus in Atlanta.

ects and are soliciting contributions from all. This money is greatly needed and will be highly appreciated. All donations can be sent to us in care of Ray Donahue at National Headquarters, 3330 Peachtree Rd., Atlanta, Georgia 30326, Suite 345.

We are now petitioning for a special "use" permit for the property. We have been through two zoning hearings to obtain the permit and the outcome, although still in question, appears favorable.

The brotherhood, which numbers fourteen, became very united this year in working toward strengthening the chapter. This was evident at rush when an all out effort was made in trying to get a good pledge class. Our efforts paid off

when we pledged eleven good men.

We now have nine brothers living in the house. Since we started efforts to secure new housing, a tremendous amount of work has been done by the entire brotherhood. We are greatly indebted to ex-Grand Delta, William R. Kitchen A'49 and Grand Eta Bates Block G'40, H'42, who have been very instrumental in guiding us toward our goal of being the first fraternity on campus to own our own house.

The brotherhood has had its ups and downs this year, but we have always persevered. One thing which has lifted our spirits was when we beat SAE in intramural football 30-0. This is the first time we have beaten them in six years.

# ALUMNI NOTES

## ALPHA

**David E. White '69** received a doctorate in elementary education from the University of Virginia and is now Assistant Prof. of Education at Keene State College, Keene, N. H.

## EPSILON

**Dr. R. Ben Dawson, Jr. '58** is Associate Professor of Pathology at University of Maryland School of Medicine in Baltimore.

## KAPPA

**Frank S. King '40** is Senior Vice-President of the National Railroad Passenger Corp. (Amtrack) with offices in Washington, D.C.

## MU

**Charles L. Drake '14**, Old Greenwich, Ct., paid his dues and noted that he has been married 56 years.

**Richard T. Terry '63** is a Technical Supervisor of DuPont's Berg Electronics Division, New Cumberland, Pa.

## TAU

**Lawrence A. Kreh '70** is Director of Personnel at Montgomery Baptist Hospital, Montgomery, Ala.

## NU

**Charles W. Eisemann '62** is President of International Resources and Applications, a diversified personnel and management company located in Dallas, Texas.

**Charles L. "Rusty" Williams '66** is Senior Vice-President, Investments, Southwestern Savings Association, Houston, Texas.

## XI

**Commander (USN) Hugh B. Replogle '61** was promoted to present position in October 1975. His home address is Oak Harbor, Washington.

## RHO

**Robert G. Rufe '68** is District Manager of the Wilmington, Del. Regional Office, Hercules, Inc.

## PSI

**Donald F. Kane '62** was recently elected President of the Upper New Jersey Lehigh Club. Kane resides in Wayne, N. J.

## ALPHA-TAU

**Fred H. Rollins, Jr. '34**, Birmingham, Michigan was elected to Board of Governors, Michigan Seniors Golf Association, 1975-78.

## GAMMA DELTA

**Robert J. Swenson '29** retired from own business and is beginning third year as Lecturer at University of California at Santa Barbara.

## EPSILON DELTA

**Dennis D. Ashenfelter '66**, Albany, Oregon is Deputy District Attorney, Linn County, Oregon.

**Leonard L. Aubert '71** living in Parkdale, Or., and farming with his father on his orchards.

**Kirk R. Bauske '65**, Long Beach, Calif. is a Civil Engineer and is listed in the U.S. Public Relations Service, "Who's Who in California."

**David A. Byrns '64**, Mountain View, Calif. is a Sportscar buff and a 2nd place winner

Regional Championship, Showroom Stock Sedan Class.

**Robert L. Clarke '58**, LaJolla, Colorado is associated with the USDA-Soil Conservation Service and travels the high Rocky Mountain areas.

**Eric H. Granberg '74**, Malmstrom AFB, Montana, is a Deputy Missile Combat Crew Commander in command of a flight of 10 ICBM's.

**James E. Ellis '65**, has been transferred to Brazil. His address is: % International Dept., Latin American Div., DuPont Co., Wilmington, De. 19898.

**Dale R. Greenley '69**, Winston, Oregon is by his own description a Fly tier-fly casting instructor, fly fishing guide, microbiologist, and biochemist.

**Leonard C. Hainz, II '74**, Albany, Oregon is a Mechanical Engineer associated with Teledyne Wah Chang.

**Alex M. Hamilton, Jr. '56** is the area manager of the Pioneer National Title Insurance Co., and Municipal Judge, Newport, Oregon. He says, "Drive carefully".

**Richard T. Hibbert '55** is Chief Architect, U. S. Navy Family Housing Program. After six years in Japan he is now residing in Burke, Va. a suburb of Washington.

**Steven A. Johnson '73** is working on a Ph D in Biology at Purdue University, Lafayette, Indiana.

**Jack W. Lentsch '65** received his Ph D in Nuclear Engineering from NYU in 1974 and is now a Nuclear Engineer with Portland General Electric, Portland, Oregon.

**Frederick W. Moeller '56** is an experimental Biological Technician at Oregon State University, Corvallis, Oregon.

**Robert A. Layfield '36**, Birmingham, Ala. is area manager of Penn Life Insurance Co. covering Northern Alabama and South Tennessee.

**Norman R. Morgan '50**, Lebanon, Oregon recently sold interest in Union Oil distributor business and is now managing and developing income property.

**Edward L. Ralston, Jr. '32** is a staff Engineer with Hawaiian Electric Co., Kailua, Hi.

**Capt. James V. Ricks '68** is Commander, 2042nd Communications Squadron, USAF, Plattsburgh, N. Y.

**Michael B. Wilkes '67** is an Architect in LaJolla, Calif. and is Editor and Publisher of the Elkhound, the publication of the Norwegian Elkhound Association of Southern California.

**J. D. Stauss '75** is a student at the Hotel Management School in Lausanne, Switzerland. His permanent address is still Corvallis, Oregon.

**George Spaur '25** writes that Chi Phis are always welcome at 1272 Kashmir Drive S., Salem, Oregon.

## ETA DELTA

**Richard A. Barnicki '68** is Senior Financial Analyst, Getty Oil Company, Los Angeles.

## RHO IOTA KAPPA

**Capt. Douglas A. Long '64** is a Computer Systems Analyst with Electronic Systems Division at Hanscom Air Force Base, Mass.

## NU DELTA

**John M. Rakowski '68** has been employed as



It looks like Iota lost this one. Presentation of "skin" to Eta Delta for Rose Bowl victory Jan. 1, 1975.



# Kubiak is Undergraduate Council Member

Brother Darryl McCall has appointed Kenneth Kubiak, Theta '77, to serve on the Council. His term runs from November 1, 1975 to July 31, 1977.

Brother Kubiak was born in Buffalo, New York and attended Maryvale High School in Cheektowaga, N.Y. While in high school he played varsity basketball and volleyball in addition to serving as president of the school's chapter of the National Honor Society.

At RPI, Brother Kubiak is majoring in both chemistry and chemical engineering, anticipating B.S. degrees in both disciplines in June. He will continue at RPI next year as a chemical engineering graduate student. He was initiated on March 24, 1974 and is currently Beta of the chapter. He is returning letterman on the varsity basketball team, slated for a probable starting center position this year.

Va., deceased, date unknown. Born Oct. 15, 1905, Germantown, Pa. Initiated Oct. 27, 1923.

### OMEGA

**George Frazer Patterson** '26 of Atlanta, Ga., died May 24, 1975 in Plainville, Ohio. Born July 16, 1904, Atlanta, Ga. Initiated Dec. 16, 1922.

**Andrew Bowie Wardlaw** '27 of Covington, La., died Sept. 1975 in Columbia, S. C. Born Dec. 19, 1903, Columbia, S. C. Initiated Dec. 16, 1922.

### ALPHA-TAU

**Matthew Christian Lock** '25 of Margate, Fl., deceased, date unknown. Born Oct. 11, 1901, Grand Haven, Mi. Initiated Oct. 13, 1922.

### GAMMA DELTA

**John Hapson Connor** '26 of Minneapolis, Mn. died Aug. 17, 1974. Born April 20, 1903, Duluth, Mn. Initiated Nov. 24, 1928, by Theta.

**Edgar Arthur Fossum** '17 of Ledyard, Iowa, died Nov. 30, 1974. Born March 9, 1890, Minneapolis, Mn. Initiated Feb. 16, 1929.

**Wendell Clarence Wilkins** '41 of Los Angeles, Ca., died in 1948. Born Feb. 3, 1921, Platteville, Wi. Initiated April 20, 1940.

### ETA DELTA

**Paul Battelle Coulter** '38 of Los Angeles, Ca., deceased, date unknown. Born Feb. 29, 1916, Los Angeles, Ca. Initiated March 24, 1935.

### IOTA DELTA

**Ronald Karl Wiehe** '64 of Fort Wayne, In., was killed in an airplane crash, Nov. 9, 1975. Born May 7, 1942, Fort Wayne, In. Initiated Nov. 5, 1961.

# CHAPTER ETERNAL

### ALPHA—CHI (5)

James K. Davis, Independence, Oh.  
Douglas A. Hoesch, Pittsburgh, Pa.  
Jack Galen Lauderdale, Circleville, Oh.  
Frank T. Ireland, III, Centerville, Oh.  
David W. Schoch, Pelham, N. Y.

### ALPHA DELTA (22)

Bradley J. Russell, Sugar Grove, Pa.  
Stuart J. Lind, Paoli, Pa.  
David S. Hicks, Jr., Peterborough, N. H.  
Michael P. Kavanaugh, State College, Pa.  
Rolf C. Gerstenberger, Phoenixville, Pa.  
Michael J. Fiorina, Latrobe, Pa.  
John A. Worhach, Fayetteville, Pa.  
James P. Osick, Midland, Mi.  
Gary L. Gray, Allentown, Pa.  
Robert S. Persons, Coraopolis, Pa.  
Donald W. Davis, Scranton, Pa.  
Glenn A. Lewis, Scranton, Pa.  
Francis A. DiRubbo, Pittsburgh, Pa.  
Robert G. Simmen, Wayne, Pa.  
Thomas O. Palmer, Albrightsville, Pa.  
William C. Ross, Oil City, Pa.  
Michael C. Pagano, Coraopolis, Pa.  
David E. MacDougall, York, Pa.  
Fred E. Flesch, Clarks Summit, Pa.  
Mark S. Worhach, Fayetteville, Pa.  
William H. Marsh, Jr., Beaver Falls, Pa.  
Robert J. DiBella, Pittsburgh, Pa.

### GAMMA DELTA (3)

Alberto L. Ancheta, Anoka, Mn.  
Kevin J. Johnson, Minneapolis, Mn.  
Glenn R. Johnson, Minneapolis, Mn.

### ETA DELTA (1)

John K. Lynch, San Marino, Ca.

### THETA DELTA (2)

Eugene K. Ehmann, West Palm Beach, Fl.  
Mark E. Dowdy, West Palm Beach, Fl.

### RHO IOTA KAPPA (11)

Kenneth A. Wakefield, W. Kingston, R. I.  
Alexander Ruggieri, III, Greenville, R. I.  
Ian M. Kowalski, Peacedale, R. I.  
Michael B. Ahern, E. Greenwich, R. I.  
John J. Avento, Saddlebrook, N. J.  
Neil P. O'Brien, Williston Park, N. Y.  
Steven M. Kass, Huntington Station, N. Y.  
Thomas B. McNiff, Warwick, R. I.  
Alan M. Salem, Mannville, R. I.  
Thomas E. Taccone, Stamford, Ct.  
Peter H. Wells, Montrose, N. Y.

### PI DELTA (4)

Richard A. Fonner, New Martinsville, W. Va.  
Robert E. McDowell, Uniontown, Pa.  
James M. McDaniel, Belle, W. Va.

### ALPHA

**James Monroe Nash** '52 of Portsmouth, Va., deceased, date unknown. Born Dec. 4, 1928, Portsmouth, Va. Initiated May 11, 1949.

### BETA

**Allen Jones** '09 of Black Mountain, N. C., died Sept. 30, 1975. Born Feb. 22, 1887, Rock Hill, S. C. Initiated Dec. 18, 1907.

**Mott Benner Ross** '22 of Morristown, N. J., died Aug. 9, 1974. Born Jan. 11, 1897, Summit, N. J. Initiated Oct. 2, 1916.

### GAMMA

**George Winship Nunnally** '04 of Atlanta, Ga., died Oct. 16, 1975. Born Jan. 1, 1885, Atlanta, Ga. Initiated Sept. 16, 1901. Affiliated, Omicron, Oct. 4, 1904; affiliated Eta, Sept. 13, 1902.

### DELTA

**Richard Ogden Smith** '37 of Alloway, N. J., died June 18, 1975. Born July 27, 1914, New Brunswick, N. J. Initiated Feb. 2, 1935.

### ETA

**John Thomas Dennis** '99 of Atlanta, Ga., deceased, date unknown, Born Dec. 18, 1878, Putnam County, Ga. Initiated Sept. 21, 1897.

**Cornelius Vason, Jr.** '27 of Madison, Ga., died Oct. 20, 1975. Born April 15, 1905, Madison, Ga. Initiated Jan. 5, 1924.

**Edward Thomas Winston** '28 of Sun City

Craig W. Yohn, Reisterstown, Md.

### SIGMA DELTA (3)

Curt S. Aikens, Redwood City, Ca.  
George A. Robinette, Coalinga, Ca.  
Mitchell A. Jaurena, Coalinga, Ca.

### PHI DELTA (2)

Robert B. Barrett, Kingsport, Tn.  
James M. Gibbs, Knoxville, Tn.

### CHI DELTA (2)

James D. Clark, Decatur, Ga.  
Frederic N. Watson, Decatur, Ga.

### OMEGA DELTA (1)

Marvin J. Philips, Morehead, Ky.

# BIRTHS

### ALPHA

Brother and Mrs. **David E. White** '69 announce the birth of a son, Adam, born Dec. 16, 1974.

### NU

Brother and Mrs. **Charles W. Eisemann** '62 announce the birth of a son, Mark Warren, born April 16, 1975.

### PSI

Brother and Mrs. **Francis A. Montbach** '65 announce the adoption of son, Michael, age 9 months on March 15, 1974.

### ALPHA-TAU

Brother and Mrs. **Daniel A. Arsulowicz** '68 announce the birth of a son, Daniel Anthony, Jr., born March 25, 1975.

### RHO IOTA KAPPA

Brother and Mrs. **Douglas A. Long** '64 announce the birth of a daughter, Robyn Dee, born July 29, 1975.

### ALPHA THETA CHI

Brother and Mrs. **Robert D. Linehan** '72 announce the birth of a daughter, Lisa Jo, born April 3, 1975.

### ZETA DELTA

Brother and Mrs. **Van E. Snyder** '64 announce the birth of a son, born Aug. 22, 1974.

### KAPPA DELTA

Brother and Mrs. **Michael Davis** '69 announce the birth of a son, Gregory Arthur, born Oct. 16, 1975.

# MARRIAGES

### ETA

**Thomas C. Gilliland** '70 to Ann B. Stokes, June 7, 1975, Atlanta, Ga.

### XI

**Kenneth A. Johnson** '74 to Deborah Robin Raynor, June 7, 1975, Remsenburg, N.Y.

### OMEGA

**Edward Iacobucci** '75 to Susan Wigley in Oct. 1975.

**Joe A. Kasprzak** '73 to Shella Couch, June 28, 1975.

**Robert J. Ogilvie** '74 to Adele Hagedorn, June 28, 1975.

**Mike A. Russell** '73 to Kathleen Whitman, June 21, 1975.

**Jeffery L. Register** '76 to Julie Skogland, August 16, 1975.

**Jere B. Stokely** '75 to Donna L. Perry, Nov. 3, 1975.

**Curtis L. Stoner** '75 to Marie McCall, Sept. 6, 1975.

### EPSILON DELTA

**Leonard L. Aubert** '71 to Karen Wood, Aug. 24, 1975, Odell, Oregon.

**David D. Zimmerman** '71 to Cindy Gehrig, Oct. 11, 1975.

### ETA DELTA

**Carl Bergan** '65 to Joanne Baker Krafter, April 21, 1974, Santa Catalina Island, Ca.

### DELTA XI

**Jesse Boyd** '75 to Nancy Smith.

**Robert Xander** '75 to Linda Lemmon.

**Jim Kratz** '75 to Lynn Conchico.

**Rick Bettis** '73 to Lori Otterson.

**Jim Pflaum** '73 to Linda Lieving.

**Marc Mickel** '75 to Marilyn Smith.

**Jeff Hancock** '74 to Lynn Carlson.

**Jeff Scales** '75 to Patty Smith.

### RHO DELTA

**Lee R. Falk** '73 to Susan L. Levy, July 6, 1975, Savannah, Ga.

**Lorin Greenstein** '74 to Jacquelyn Stein, Aug. 24, 1975, Rome, Ga.

# LET'S TALK IT OVER Continued from page 2

an even 100. Alpha-Tau, U. of Michigan and the University of Georgia chapters tie for third with 97 each. The editor having no computer grew tired of counting and has not verified the figures. Count them if you wish; however the really important consideration is that alumni do provide for the future well-being of each chapter when they contribute, and there is little significance to the raw number by chapters unless applied against the total number of members in each chapter.

Footnote: We appreciate and applaud the many alumni regularly supporting their chapters through contributions and we regret that their names are not available to us so that they could be recognized.

**LOS ANGELES AREA CHI PHI DAY AT THE RACES (SANTA ANITA) Sunday, February 15, 1976**

\$7.50 per person—Includes admission and Buffet lunch. Bring your wives and friends. Roger Williams, H D '48 is Chairman of the event and may be contacted at 9440 Santa Monica Blvd., Beverly Hills. Watch for your invitation and more details.

**DO YOUR GRADUATE WORK IN SUNNY CALIFORNIA**

The Eta Delta Chapter of the Chi Phi Fraternity is seeking to fill the position of Graduate Resident Advisor at the University of Southern California for the 1976-77 academic year. We are searching for an energetic Chi Phi who has held past positions of responsibility, and more important, exhibits the desire to improve upon a strong fraternity tradition at Eta Delta. Your chief function as G.R.A. would be to counsel and assist all chapter officers in performing their duties. Compensation includes all meals, a single room in the chapter house, plus one half tuition remission—savings amount to approximately \$3,200 per year. Graduate students in business or law are encouraged to apply.

Interested applicants should mail a cover letter, resume, photo, and three letters of recommendation to the following address:

Mr. Paul Legvold  
% Mr. Ted Winter  
720 West 28th Street  
Los Angeles, Ca. 90007

Apply soon and good luck!

# 175 Participate in Sesquicentennial in Los Angeles

## Eta Delta and Local Alumni Are Sponsors

Over 175 area Chi Phis gathered at the Jonathan Club, Los Angeles, October 17 to observe Chi Phi's 150th Anniversary.

The party was jointly sponsored by the Eta Delta chapter and local area alumni, spearheaded by co-chairman, Ollie Hammond, Sigma '28 and Warren Driver, Eta Delta '41. Much of the planning and organization for the event was handled by Paul Legvold, Eta Delta '67 and former Grand Alpha, C. Moreland Thomas, Eta Delta '45.

Five members of Delta Delta, the former UCLA chapter, were present including Henry H. Hare '31, the father of Bill Hare, Eta Delta '60, past president, Eta Delta Alumni Association. Attending from out of town were immediate past Grand Alphas, Richard C. Ham, San Francisco and Carl J. Gladfelter, Atlanta. Up from Berkeley came Mel Jessup, Eta Delta '45, Trustee of the Chi Phi Educational Trust whose son Jay is a senior member of Eta Delta.

Don Hutchinson, Sigma '25 and Raymond P. Bentley, Phi '18, who were present at the 100th Anniversary Dinner held in Chicago in 1924, commented on the fact that the Chi Phi spirit ran as high now as then.

Three generations of Sigma Chi Phis were in attendance: I. B. Countryman, Sigma '17, Donald Countryman, Sigma '40, and Byron Countryman, Eta Delta '71. They surely toasted their own presence.

Brother Paul Wildman, Eta Delta '48, toastmastered the event, and introduced Darryl McCall, current Grand Alpha and Ray Donohue, Atlanta, who will become National Director, January 1, 1976.

While all this was taking place, Mrs.

Elmer Hoffman was hosting a cocktail party at the University Hilton for all the wives and sweethearts of those attending. Brother and Mrs. Elmer Hoffman have been the gracious hosts of many an Eta Delta rush party and social event and their graciousness will long be

remembered.

The fathers of Eta Delta's pledge class were invited to attend the formal pledge ceremony which was held prior to the dinner. This was the first time that fathers of Eta Delta pledges were ever permitted to witness the ceremony.

An unusual fact came to light in planning for the party. Much to the surprise of Paul Legvold and Ollie Hammond, Jonathan Club members, it developed that Don Damato, Gamma '47, is the current president of the Jonathan Club. It's a small world when Chi Phis gather.

## Trust Aids Hundreds Through the Years

(Continued from page 1)

(a) To assist and supplement the work of universities, colleges and schools in the promotion of the scholarship and development of the character and morality of students;

(b) To provide improved educational facilities, opportunities and conveniences for students;

(c) To make donations and/or loan money to universities, colleges and schools;

(d) To assist needy and deserving students to complete their education;

(e) To aid aged or disabled former students who are in need and are worthy of assistance;

(f) To expend money for any other educational and/or charitable purpose not inconsistent with any of the foregoing specific purposes.

The present members of the Board of Governors are: Grand Alpha, Darryl McCall, Charlotte, N.C.; Grand Eta, Bates Block, both ex-officio; Harold Steinke, Columbus, Ohio; David Fairfield, Glen Ellyn, Ill.; Richard S. Reade, Montreal, Canada; Wyford D. Jones, Delaware, Ohio and Merritt W. Truax, Salem, Oregon.

The present Trustees are: Chairman, Wallace Jensen, Detroit, Michigan; Vice-Chairman, Melvin R. Jessup, Berkeley, California; Treasurer, Jack C. Fraser, Atlanta, Ga.; Bates Block, Secretary and Legal Counsel, Atlanta, Ga.; Henry C. Gildner, Detroit, Michigan; and Paul Helliwell, Miami, Fla. Carl J. Gladfelter serves as the National Director.

Many hundreds of Chi Phi's have been assisted in the last 45 years through the student loan and scholarship programs. Chapters have also been the direct beneficiaries of the Trust through loans and the chapter study/library development program. Since 1969 the Trust has not, under Internal Revenue regulations, been permitted to make any loans on or invest in chapter properties.

The Sparks Memorial Scholarship Medal Awards are made each year to the outstanding student in each chapter. The Herman Krannert Leadership Conference was established in 1969 when Brother Krannert, Sigma '12 donated \$15,000 to the Trust to implement a leadership conference. It is held annually prior to each Congress.

Contributions are needed to sustain the good accomplished through the Trust, and alumni are reminded that in addition to supporting the Fraternity

program through their voluntary alumni dues, a gift to the Trust helps many a younger Brother complete his education.

The Trust has never actually pushed the concept of giving through bequest to the Fraternity or the Trust. However, many alumni and their families are writing new wills or revising an old one to do just that. Anyone of the Trustees or the National Director may be consulted

on how to proceed legally and financially to accomplish such a bequest.

The Trust also assists the Fraternity in sponsoring the Chi Phi Muscular Dystrophy project. Many chapters participate in a contest to raise funds for the National Muscular Dystrophy, with the chapters raising the greatest total receiving an award for their efforts. Grand Alpha, Joe Rice Dockery, generosity has made this program possible.

## Pi Seeks to Reorganize Chi Phi Club of Chicago

Pi Chapter at Northwestern University in Evanston, Illinois, with Alumni and Council Office assistance, is mounting an attempt for a re-organization of the Chi Phi Club of Chicago.

This group, originally founded more than 40 years ago and mainly con-

stituted of Sigma Chapter alumni from the University of Illinois, held weekly luncheon meetings for many years in downtown Chicago and was instrumental in the chartering of Pi Chapter after the National Congress was held in Chicago in 1949. The Club became inactive in the 1960's.

With the many midwest chapters supplying regional alumni, there would seem to be many Chi Phis in the area who would enjoy meeting regularly on a social basis and serving in an advisory capacity to nearby undergraduate chapters.

Former members of the Chi Phi Club of Chicago, and any other Brother now residing in the greater Chicago area are urged to become active.

All regional Alumni will soon be contacted by mail concerning an organizational cocktail party to be hosted by Pi Alumni Association Secretary, Ed Bradley, Pi '68 at his home: 700 Stanford Lane, Buffalo Grove, Ill. 60090, on the last Saturday in January. Any and all Chi Phis in the area are urged to attend. Anyone not contacted by mail should address inquiries to: Rich Parker, Alpha, Pi Chapter of Chi Phi, 550 Lincoln St., Evanston, Illinois 60201 (312) 475-9003.

Hope to see all regional Alums there!

## CHAPTER LETTERS

(Continued from page 4)

nities, many of them much larger. We are beating them with spirit and determination.

Alumni relations have improved. More and more alumni are appearing after football games. It is amazing the things a young active can learn from an alumnus, especially activation ideas. Scholarship dinners honoring outstanding actives have been wonderful. The money from the Alumni is initiative for the college students. The summer Congress in North Carolina provided two of our actives and a number of our alumni an enriching experience. They said it was an unbelievable experience. The relations between active chapter and alumni in our area keeps improving with every contact.

The highlight of the year really had to be the 150th commemorative celebration that took place on our Homecoming weekend the end of October. The weekend started off with an afternoon reception at University of Wisconsin President, John C. Weaver's, K '31, house. Brother Weaver and his wife, Roberta, were most gracious hosts. A

pool party at the Concourse Hotel in the evening was successful, with some swimmers making an appearance, a few unintentionally. The gathering of Alumni was amazing. Stories, songs, and memories were shared. A Wisconsin victory over Northwestern on Saturday followed by a cocktail party at the house, helped to continue the flow of good spirit. The dinner dance, attended by 375, at the Concourse was fantastic. Grand Alpha, McCall; National Director, Gladfelter; Grand Beta, Jones; and Grand Delta, Rogan distinguished the affair.

A fund raising project was started to renovate the interior of the Kappa house. There is a lot of work to be done, but the Alumni Association is confident that they can achieve \$25,000 goal that has been set.

The new actives of the Kappa chapter are just beginning to realize what we are all about. The spirit was kept alive by a few members awhile back is now at full-tide. This has made Kappa what it is today, the number one fraternity on the University of Wisconsin campus.

SECOND CLASS POSTAGE PAID  
AT KISSIMMEE, FLORIDA 32741

THE  
CHI  
PHI  
CHAKETT

POSTMASTER: Please send Form 3579 for undeliverable copies to: Chi Phi Fraternity, 3330 Peachtree Road, N.E., Suite 550, Atlanta Georgia 30326

### MEDLEY OF CHI PHI SONGS

Commemorating the Sesquicentennial

**\$4.75 postpaid**

Send order to Council Office

The Chi Phi Fraternity  
Suite 550, 3330 Peachtree Rd. N.E.  
Atlanta, Ga. 30326