

Leadership Conference is Provided For

THE
CHI
PHI

CHAKETT

DECEMBER, 1976

150th Club Contributors Are Listed

A special fund raising project took place during the two year period 1974-1976. For the purpose of supporting projects designed to enhance the 1976 Congress and other events associated with the 150th Anniversary Year of the founding of our chapter at the College of N.J. (Princeton Order).

It was a well understood fact that the Council's usual annual operating budget was not of sufficient size to absorb anything but the most nominal celebration events. The Grand Council approved the special solicitation which achieved its objective, thanks to the Brothers and Associations listed below.

Included among the items financed by this project were permanent metal plaques for each chapter, a Chi Phi slide show narrated by Walter Cronkite, chapter Alumni Directories, special promotion and entertainment for the Asheville Congress. The support of these Brothers helped elevate the celebration

(Continued on page 4)

McDonald Receives Memorial Service From Tau Chapter

The untimely and premature death of Tiger McDonald came as a shock to his family, friends and every living Tau Chi Phi both active and alumni. His support of this chapter by way of advise and acting as a bridge with less frequently seen alumni will be sorely missed.

Services for Sterling were held in Birmingham. Sixteen active from the Tau Chapter were in attendance at the ceremony which was opened by Chapter Alpha, Vance Gardner, who offered Palm Branches shaped in the form of a Chi and a Phi with a wreath of Bay to complete the monogram of our fraternity. The Chapter Beta, James T. Kyle, read the fraternity prayer then turned the services over to Dr. Denson Franklin.

Sterling is survived by his wife, Evie McDonald and step son, John S. Creel, Jr., his mother, Mrs. Starling McDonald Jr., sister, Mrs. Sallie McDonald Usery, and two Chi Phi Brothers Allen McDonald Tau '54 and William W. McDonald Tau '51.

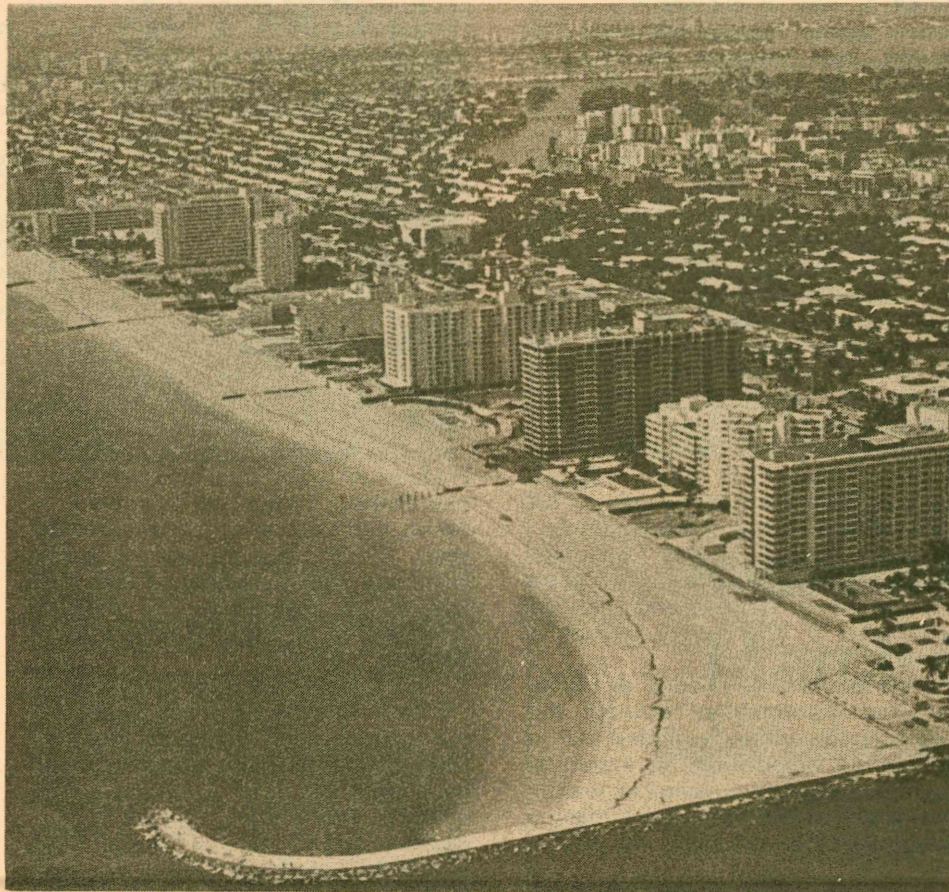
A Sterling McDonald Memorial scholarship fund has been established to foster the memory of Sterling's contributions to Chi Phi.

Eta Delta Undergraduate Wins Journalism Award

Kent Schoknecht, a University of Southern California sophomore and member of our Eta Delta Chapter, won first place in one of eight categories of the William Randolph Hearst Foundation National Journalism Competition.

His article on "Students Who Steal" earned a \$1,200 award in the investigative reporting division and qualified him for further competition in the national finals against seven other college writers who won in their respective categories. The finals will be held in San Francisco and could earn Kent up to \$2,000 in additional awards.

Kent, a Dean's List student, is editor of the Student News Bureau and a news editor of the USC Daily Trojan. He is a member of Sigma Delta Chi, a Society of Professional Journalists.



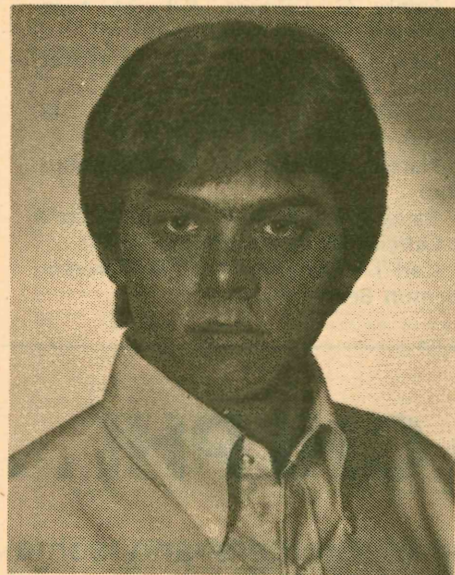
Chi Phi's 1977 Summer Congress will be held at the Americana Hotel in Bal Harbour, Florida. The Krannert Leadership Seminar is set for August 17-18, and the Congress sessions for August 19-21.

Thorneburg Begins Two-Year Term As Undergrad Council Member

Thad Thorneburg (Alpha-Alpha '78) has been appointed Undergraduate Member of National Council for a two-year term ending with Congress of 1978. Thad replaces Blair Westlake, Eta Delta '76, who completed his term this past summer.

Two of ten positions on the Grand Council are occupied by Undergraduate Active Members who are expected to attend the three to four Council meetings held each fiscal year. Their input is considered an important element in shaping national office policy.

Thad's chapter achievements in only his first two years include pledge class president, outstanding pledge award, rush chairman, chapter Beta and chapter delegate to the Columbus Ohio Congress. He is noted for his organizational skills and determination. In academic matters, he is pursuing a split degree in Political Science and Economics maintaining a cumulative grade point of 3.5. His high school achievements and employment record show him to be both well rounded and an achiever.



Thad Thorneburg

Grand Council Meets In N.C. Feb. 11-13

Opening session of the meeting of the Grand Council of Chi Phi will be held Friday afternoon, Feb. 11 with a tour of the national headquarters of Phi Kappa Pi in Charlotte. A business meeting of the council will follow in the conference room.

Saturday's meeting will be held at the Psi Delta Chapter house from 9 a.m. to 5 p.m., followed by a reception hosted by the chapter mother's club.

Sunday morning grand officers will make a 2½ hour trip to Chapel Hill to hold the final session at the Alpha-Alpha chapter house. 10:30 a.m. until 4 p.m.

All Chi Phi alumni are invited to attend business sessions.

Chi Phi Chapters in Support of Several Charitable Projects

Based on a 1972 undergraduate committee study, delegates at the next Congress adopted Muscular Dystrophy as a Chi Phi National Charities Drive. Since its inception, over \$35,000 has been turned over to Muscular Dystrophy by more than 13 different chapters. During the 1975-76 academic year, slightly more than \$16,700 was raised through a variety of events ranging from dance marathons to a car smash. Special recognition must go to Alpha Theta Chi (University of Nebraska) which exceeded its previous record by raising \$13,440 last spring.

Six chapters each received a check for \$166.00 from the Chi Phi Educational Trust as winners in competitive categories according to university size

Alpha-Tau Library Dedicated to Herman Swanson

The Fiscal year ending July 31, 1976 was a satisfactory one for the Trustees of the Educational Trust. Contributions from many alumni and friends of our fraternity enable us to continue the programs of past years some of which are loans, scholarships, library grants, Sparks Medals, Muscular Dystrophy, support of research studies involving fraternities and sororities, the Indiana Institute Program, and the Krannert Leadership Seminar.

In addition to the usual flow of contributions, a significant sum of cash has been received from the Estate of Herman Swanson, A-T '14, University of Michigan. We are deeply grateful for the Swanson grant, and in memory of Brother Swanson the library at the Alpha-Tau chapter house has been renovated and will become a permanent tribute to his memory and dedication to Chi Phi and the young men that constitute the American Fraternity System.

One of the primary functions of the Trust is to provide financial aid to student members of Chi Phi in need of such assistance. During the past fiscal year, thirteen scholarships totaling \$4,600 were awarded to members of as many chapters while 33 loans were made totaling \$15,000. The combination of these sums represents an increase of several thousand over the previous year. Economic conditions coupled with rising educational costs are causing an increase in requests for financial aid.

Every year one member of each chapter is presented the Sparks Memorial Medal for outstanding academic work. Since inception of this program in the '20s over fifteen hundred medals have been awarded.

The Trusts funds the Herman Krannert Leadership Conference held each summer prior to Congress. Last year's Conference held in Asheville, cost \$3,032. The expenses for the 1976 Conference held at Ohio State University totaled \$2,600. The original funds for the sponsorship of the Conference were donated by Herman Krannert, Sigma '12. As a result of inflationary pressures, the Trustees have had to earmark additional revenues in order to sustain the program.

The prizes awarded in the chapter competition to raise funds for the national Muscular Dystrophy program come from a grant made by past Grand Alpha, Joe Rice Dockery, Xi '27. This year \$1,000 was distributed equally among the following chapters: Alpha Theta Chi, Delta Xi, Epsilon Delta, Theta Delta, Psi Delta and Zeta. I would like to encourage more chapters to participate in this great philanthropic endeavor.

Some funds are available each year for the development of the improvement of library/study facilities within chapters. Mu, Stevens Institute of Technology is currently the recipient of such an award. Other chapters that have received recent grants include: Tau, Lambda, and Alpha-Tau.

It has always been the philosophy of the Trust to foster research and studies involving fraternities and sororities and their role in the academic community. This year the Indiana University Foundation conducted a significant study on the future of the American College Frater-

(Continued on page 2)

and community size. Each year the \$1,000 prize money is funded through the generosity of former Grand Alpha, Joe "Rice" Dockery who has made grants to the Educational Trust for the purpose of rewarding chapter's efforts for this charity.

The 1975-76 winners were:

College-Size Category
Alpha Theta Chi, University of Nebraska
Epsilon Delta, Oregon State
Zeta, Franklin & Marshall

Community-Size Category
Psi Delta, Charlotte, N.C.
Theta Delta, Gainesville, Florida
Delta Xi, Buckhannon, West Virginia

(Continued on page 2)

Muscular Dystrophy Charities

(Continued from page 1)

Feelings of the original undergraduate committee was that Chi Phi could achieve many desirable benefits such as:

1. Supporting research and operations for a worthy human cause;
2. Improve chapter image on their respective campus;
3. Promote unity in chapters;
4. Enhance the fraternity name on a national level;
5. Assist chapters with modest financial rewards

It should be noted that some of our chapters prefer support of other worthwhile charities such as: Easter

Seals:—Gamma, Emory University, Alpha Delta, Pennsylvania State University.

Cancer Fund:—Alpha-Chi, Ohio Wesleyan, Sigma Delta, University of California-Davis.

Georgia Leukemia Drive:—Eta, University of Georgia.

Those chapters not participating in such a project are encouraged to become involved by making a commitment. The Chi Phi Educational Trust will again offer \$1,000 in prize money for Muscular Dystrophy to be divided among six chapters winners. The project is promoted and coordinated through the National Office.

Educational Trust Report

(Continued from page 1)

ity, and address the role of the college fraternity in the year 2000 in relation to American society and higher education at that time. We supported the project with a gift of \$400.

Again this year we supported the Annual Fraternity Institute, a one credit course conducted by the faculty and staff of Indiana University for college administrators and professional fraternity executives. Ray Donohue, National Director, attended last year's institute.

Bulletins outlining the procedure in applying for loans or scholarships were distributed by our National Office to each chapter during the 1975-76 academic year and also handed to the delegates at the Columbus Congress. They also received a newly printed Trust indenture including by-laws. Copies are available from the Council Office.

Prior to 1969 the Trustees from time to time lent a number of chapters funds to be used for the construction, purchase, additions and renovations of chapter houses. Revised Internal Revenue regulations governing all foundations made it mandatory that the Trustees revise their position on loans to chapters and chapter house associations. Virtually no funds may be granted or lent to chapters since a chapter house is not regarded by the Internal Revenue Service as contributing to or supporting the educational process. This fact is

offered by way of explanation of the Trustees present position with regard to requests from chapters for financial assistance. An examination of the present investment portfolio indicates a large number of loans to chapters. Almost without exception the loans were made prior to 1969.

It would not be appropriate to close this report without thanking all the Trustees for the time and effort spent by each of them working on Trust matters. I especially wish to thank and applaud retiring Trustees Paul L. E. Helliwell, Th D '36, and immediate past Chairman Wallace M. Jensen, K '29, for their contribution and devotion to the work of Trust during their tenure in office. Brother Jensen has been elected Emeritus Chairman in recognition of his service to the Trust and the Fraternity.

Harold Steinke, K '43, Columbus, Ohio, was elected a Trustee by the Board of Governors in October and attended the October 31, 1976 Trustee meeting in Detroit.

Contributions are needed to sustain the good accomplished through the Trust, and alumni are reminded that in addition to supporting the Fraternity program through their voluntary alumni dues, a gift to the Trust helps many a younger Brother complete his education.

Tyrust has never actually pushed the concept of giving through bequest to the Fraternity or the Trust. However, many alumni and their families are writing new wills or revising an old one to do just that. Anyone of the Trustees or the National Director may be consulted on how to proceed legally and financially to accomplish such a bequest.

Melvin R. Jessup, H D '45, Chairman, Berkeley, California

Henry G. Gildner, A-T '24, Vice-Chairman, Detroit, Michigan

Jack C. Fraser, H '43, Treasurer, Atlanta, Georgia

Archibald R. Updike, Th D '43, Secretary, Lake Wales, Florida

Harold Steinke, K '43, Columbus, Ohio

Bates Block, G '40 H '42, Grand Eta & Ex-Officio, Atlanta, Georgia

Carl J. Gladfelter, A-T '33, Director, Boynton Beach, Florida

Alpha Chapter Successfully Works Off Debt

During the recent past, Chi Phi of Virginia with officers Stan Joynes, Hank Prasse, Bob Mizell and Rich Williams has continued to prosper. Significantly, the brotherhood's hard work and careful choosing of priorities has almost completely erased a \$3,000 debt left from a few years back, despite large expenditures for improvements to the house.

The Alpha chapter has regained its position as a fraternity deeply involved in the affairs of the University of Virginia. Currently, three of the six seats of the governing board of the Inter-Fraternity Council are held by Chi Phi's. A new bi-monthly newspaper has appeared upon the Grounds. The founding editor, the current editor-in-chief and the current associate-editor as well as many of the staff are brothers of Chi Phi. A new pledge is chairman of the Speakers Committee of the University Union. Also, the Student Co-ordinator of the Intramural Department is a brother. Chi Phi's are also involved with the Resident Advisor program and such University Committees as: Catalogue, Traffic Appeals, Future of the University, Special Committee on Easters, and Fraternities and Sororities.

In the Intramural Sports program Chi Phi finished in the top third of the fraternity division, competing in a variety of events. Last year, as in the two previous years, Chi Phi was the team wrestling champion with a number of individual weight-class champions. The wrestling team finished far ahead of all other competitors.

At the University there have been no problems with the social life. Along with the traditional Big Weekends and road trips, some of the more enjoyable events have been the 151st Anniversary Banquet, the mud and grain parties of I.F.C. weekend and the Parents Cocktail Party.

Chi Phi has also been active in community service, raising money for the March of Dimes and contributing heavily to an aluminum drive to help handicapped children of the local area.

This year was another good one for rush. Fourteen outstanding young men pledged the house. They're a diverse group hailing from as far away as Tennessee and Connecticut.

Certainly, the most important occurrence of the year has been the successful reorganization of the Alpha Home Association. The house feels that this will be an important factor in the continued growth and prosperity of the fraternity. The support of alumni is gratefully appreciated.

There is a standing invitation for all alumni to visit the house at their convenience. We welcome your interest and the house is interested in you. Please feel free to visit anytime.

Philip R. Husband Zeta

Eta Chapter Wins Leukemia Fund

University of Georgia

Actives of the Eta Chapter turned in an astounding performance by raising \$6,007.00 which represented 39% of the entire amount collected during this past November's University Leukemia Fund Drive. The results exceeded the drive's goal and earned Chi Phi winning recognition in both their division and in the overall competition.

Earlier in the fall quarter, Eta's rush effort succeeded in producing 23 pledges which ranked with the best performances on campus. A well-organized campaign during the summer produced parties of various parts of the state. Fall rush week concluded the drive which is helping bring Eta back to its former position among fraternities on the Athens Campus.

Kappa Chapter Growing Stronger

The fall term began with a pledge class of 13 continuing an outstanding recovery from the days when the Greek system at Madison began its decline. The troubled period saw the collapse of nearly 30 fraternities and 20 sororities on our campus. Today with 36,000 students there are 20 fraternities and 9 sororities.

The Kappa Chapter is considered a medium to large fraternity and has earned a reputation as one of the strongest. Last year we placed 2nd in the All Fraternity Badger Bowl. This year we have taken third place in golf, ice hockey, volleyball and fourth place in tennis out of twenty teams. Our social calendar is always full. Our composite has become the most popular one to steal.

One of the highlights of this past fall was our scholarship dinner held November 22 recognizing members with outstanding records and greatest improvement. Our overall grade point average last spring was better than a B average. Sparks Medal winner for the past year was Chris Endres, current Alpha, a senior pursuing a dual major in mathematics and physical education.

The beginning of the winter team will see 12 new initiates the first of whom will be the 1,000th initiate since our chapter's founding March 11, 1916. Pre-initiation activities will take place during registration week such that no classes or study time will be missed. "Help Week" activities are designed to assist pledges to make the transition to solid active members. It goes without saying that the actives are very helpful.

With current membership at 42, we are having no difficulty maintaining a full house (capacity 26). Ours is a very grand house with much charm and class. The 50-year old structure is in need of some physical improvement which is understood by our alumni board. Your support of their programs and financial assistance is appreciated.

An alumni day is being planned for Saturday, April 16th including afternoon activities, an evening party and a Kappa Alumni meeting. More information will be sent as plans are finalized.

Chris Endres

THE CHI PHI CHAKETT

VOLUME 61, NUMBER 4

DECEMBER, 1976

Raymond J. Donohue, Editor

The Chi Phi Chakett is published in September, December, February and April by the Chi Phi Fraternity, 3330 Peachtree Rd., N.E., Suite 345, Atlanta, Georgia 30326. Second class postage paid at Kissimmee, Florida 32741. Subscription rate \$5 per year. Single Copies \$1.50.

TELEPHONE 404/231-2164

GIVING TO CHI PHI . . .

An increasing number of Brothers and some friends of Chi Phi are remembering our Fraternity in their estates as well as donating assets.

We can assist in recommending a plan which suits your desires through one of the following methods:

- Designation in Will
- Assignment of Life Insurance Policy
- Gift of Stock, Bonds, Real Estate
- Establishment of a Trust

Name _____

Address _____

City _____ State _____ Zip _____

Carl J. Gladfelter/or
Ray Donohue
Suite 345,
3330 Peachtree Road, N.E.
Atlanta, Georgia 30326

Proper designation of legatee is:
Chi Phi Educational Trust
Chi Phi Fraternity, Inc.
Chi Phi Building Fund, Inc.
Chapter (designate chapter) of Chi Phi

Pi Has Good Year; Plans Celebration For Twenty-Fifth

Northwestern University

Our Active Forward Planning Committee has established the weekend of May 20th, 1977 for the Pi Chapter and Alumni Association's 25th Anniversary Celebration. Both formal and informal social events are planned with Saturday athletic activities mixed into the significant occasion. Chi Phi has proven to be a factor on our campus. It is fitting that we reaffirm our pride in Pi's accomplishments.

The 1975-76 school year was marked by five major accomplishments: fall rush, kitchen and living room improvements, sponsorship of a regional basketball tournament, establishment of a major scholarship trust and winning the year's intramural athletic sweepstakes trophy.

Rush Chairman, Brian Miller, organized and directed a rush program which began with personal letter summer contact and concluded with campus activities. The end result was thirteen pledges who are expected to

Allan M.
John S. B.
Richard C.
Thomas J.
Anthony
David J.
David L.
Eddy J. S.

GAMMA
Neil B. S.
Michael
John E. F.

ETA DELTA
Lance D.

THETA DELTA
Matthew
Michael
Kirk T.
John T.
James W.
Jorge O.
William
William
Merle A.
Terry M.
Randall
David J.
Walter F.
Dean R.

RHO IOTA
Mark L.
Robert T.
Mark A.
Paul R.
Raymon
Frederic
Donald
Charles
Arthur
Mark C.

DELTA KAPPA
Donald
Hugh J.
James E.
Scott A.
Joel T. F.
Jeffery J.
James D.
Douglas
Ronald
Howard
Bradley
Todd A.
Glenn J.
Christo

DELTA EPSILON
Daniel
23, 1975

ETA
John M.
18, 1976

MU
Stan J.
Judy W.

ALPHA
I. Man
June 21

ALPHA
Jose F.
1976.
Richard
July 19

PHI
Geor
Born
☆☆☆

ALPHA
Fred F.
died
Culver

Allen
Oct. 2
Va. In

Bland
died /
mond

BETA
Benja
died F
field,
Samu
N.Y.,
Brook

GAMMA
Welch
died



Enthusiasm shows in this picture of the Rho Iota Kappa group during 1976 Greek week. Below is the Chi Phi team in one of the key Greek week events.



perpetuate our current favorable campus image.

Our 38-man chapter produced competitive teams in a variety of sports such that we were able to accumulate 166.3 total points shading the runner-up (165.0 points) for the sweepstakes trophy. Eight sports were involed covering the twenty-five fraternities on campus. This fall our football team continued to roll with a 7-1 record outscoring opponents 149-33.

During the past year the father of Richard P. Denning, Pi '69, made some generous contributions which have immensely benefitted our chapter. In an effort to show our appreciation in a lasting way, brothers of the chapter voted to establish a Willard S. Denning Scholarship Fund, the income from which will be awarded each January to the Pi freshman who most distinguishes himself academically. The chapter began funding the Denning Scholarship Trust with a check for \$500.00 to the Chi Phi Educational Trust who will administer the endowment. We challenge our alumni to match this start by making contributions to the Educational Trust earmarked for the Denning Fund. Checks may be forwarded to the chapter, national office, or given to any Trustee or Grand Officer.

Four regional Chi Phi Chapters participated in the February 1976 Midwest Basketball Tournament sponsored by

our chapter. Alpha-Chi, Ohio Wesleyan, was the winner of the athletic action but everyone became a winner at the party which followed on Saturday night. Last year's participants will likely return this February 28th for a repeat performance of the evening event.

The last major occurrence of the past year was the complete redecoration of our living room including new furniture, carpeting, shutters and lamps in addition to a new application of paint. The kitchen also received some attention which included installation of a fire hood and a new juice machine which dispenses fruit flavored breakfast drinks; designed to hold down the outlays for milk. While all the brothers were involed in these improvements, special credit should go to Brother Tom Riordan for arranging university financing and Brother Brian Strzalka for gaining the advise of an interior decorator, his sister.

Eta Delta Undergrads Have Key Roles At Songfest

University of Southern California Two Eta Delta undergraduates played key rolls in last spring's University of Southern California Songfest. The event

is billed as the largest annual all-university musical held in the country with an estimated audience of 5,000 each of the past several years. Revenue of almost \$6,000 from the 23rd annual production was turned over to the John Tracy Clinic—a school for deaf and dumb children. Fraternities, sororities, residence halls and informal groups compete in various categories with a six-minute original production. Each group writes and produces its own show centered around a given theme. Winners are chosen in areas of music, costume, technical execution and overall performance.

Blair Westlake was Chairman of the Songfest Committee consisting of 60 members responsible for planning and supervision of the entire event. Blair was a senior last year and has currently begun law school at Southwestern in Los Angeles. He has just completed a two-year term as an Undergraduate Member of the Chi Phi Grand Council.

Brad Wright was Finance Manager for last year's production. He was responsible for developing the budget, renting the Greek Theater, hiring personnel, arranging publicity, technical equipment, and all other expenditures for the event. Brad is currently a senior and Alpha of the Eta Delta Chapter.

This past fall's rush program was headed by Steve Marcussen who planned many functions which took full advantage of the geography of the

area: day-long parties at the beach, desert camping trips, and the opportunity to spend some time on a sail boat were all part of the rush program.

But the natural surroundings weren't the only advantages of the area. Consider this: within one hour of the house are Disneyland, Knott's Berry Farm, Hollywood, Magic Mountain (an amusement park which features an eleven-story loop roller coaster), Beverly Hills, Dodger (baseball) Park, and a host of international communities such as Chinatown, Little Italy, Alverado St., and Little Tokyo.

In coordinating this year's rush plans, Marcussen tried to combine events that required active participation—little sister softball games, trips to amusement parks, etc.—with passive occasions such as outings to movies.

One of Eta Delta Chapter's strongest points in rush functions is the number of volunteers who offer their homes as gathering places for parties.

This year, parties were given in Beverly Hills, Newport Beach, Bel Air, and in Los Angeles proper. The brothers agree that meeting rushees away from the fraternity gives the opportunity to present a more relaxed and congenial atmosphere and one in which they can have a better chance to acquaint themselves with the prospective members.

The final results of our fall program was 12 new pledges.

Kent Schoknecht

Attention—Change in Schedule . . .

Southeastern Basketball Tournament March 5 & 6, 1977

Oglethorpe University Field House

Contact Ken Morgan For
Details (404) 394-5100

U.S. POSTAL SERVICE STATEMENT OF OWNERSHIP, MANAGEMENT AND CIRCULATION <small>(Required by 39 U.S.C. 3685)</small>			
1. TITLE OF PUBLICATION THE CHI PHI CHAKETT		2. DATE OF FILING 9/27/76	
3. FREQUENCY OF ISSUE Quarterly - September, December, Feb., April		A. NO. OF ISSUES PUBLISHED ANNUALLY 4	B. ANNUAL SUBSCRIPTION PRICE \$5.00
4. LOCATION OF KNOWN OFFICE OF PUBLICATION (Street, City, County, State and ZIP Code) (Not printers) 410 West Verona St., Kissimmee, Florida 32741			
5. LOCATION OF THE HEADQUARTERS OR GENERAL BUSINESS OFFICES OF THE PUBLISHERS (Not printers) The Chi Phi Fraternity, Inc. 3330 Peachtree Rd., N.E., Rm. 345, Atlanta, Ga. 30326			
6. NAMES AND COMPLETE ADDRESSES OF PUBLISHER, EDITOR, AND MANAGING EDITOR			
PUBLISHER (Name and Address) The Chi Phi Fraternity, Inc., 3330 Peachtree Rd., N.E., Rm. 345, Atlanta, Ga. 30326			
EDITOR (Name and Address) Raymond J. Donohue, 3330 Peachtree Rd., N.E., Rm. 345, Atlanta, Ga. 30326			
MANAGING EDITOR (Name and Address)			
7. OWNER (If owned by a corporation, its name and address must be stated and also immediately thereunder the names and addresses of stockholders owning or holding 1 percent or more of total amount of stock. If not owned by a corporation, the names and addresses of the individual owners must be given. If owned by a partnership or other unincorporated firm, its name and address, as well as that of each individual must be given.)			
NAME		ADDRESS	
The Chi Phi Fraternity, Inc. (Non-profit-no stockholders)		3330 Peachtree Rd., N.E., Atlanta, Ga. 30326	
8. KNOWN BONDHOLDERS, MORTGAGEES, AND OTHER SECURITY HOLDERS OWNING OR HOLDING 1 PERCENT OR MORE OF TOTAL AMOUNT OF BONDS, MORTGAGES OR OTHER SECURITIES (If there are none, so state)			
NAME		ADDRESS	
none			
9. FOR COMPLETION BY NONPROFIT ORGANIZATIONS AUTHORIZED TO MAIL AT SPECIAL RATES (Section 132.122, PSM) The purpose, function, and nonprofit status of this organization and the exempt status for Federal income tax purposes (Check one)			
<input checked="" type="checkbox"/> HAVE NOT CHANGED DURING PRECEDING 12 MONTHS		<input type="checkbox"/> HAVE CHANGED DURING PRECEDING 12 MONTHS (If changed, publisher must submit explanation of change with this statement.)	
10. EXTENT AND NATURE OF CIRCULATION		AVERAGE NO. COPIES EACH ISSUE DURING PRECEDING 12 MONTHS	ACTUAL NO. COPIES OF SINGLE ISSUE PUBLISHED NEAREST TO FILING DATE
A. TOTAL NO. COPIES PRINTED (Net Press Run)		20,775	20,532
B. PAID CIRCULATION			
1. SALES THROUGH DEALERS AND CARRIERS, STREET VENDORS AND COUNTER SALES		none	none
2. MAIL SUBSCRIPTIONS		20,596	20,358
C. TOTAL PAID CIRCULATION (Sum of 10B1 and 10B2)		20,596	20,358
D. FREE DISTRIBUTION BY MAIL, CARRIER OR OTHER MEANS SAMPLES, COMPLIMENTARY, AND OTHER FREE COPIES		35	32
E. TOTAL DISTRIBUTION (Sum of C and D)		20,631	20,390
F. COPIES NOT DISTRIBUTED			
1. OFFICE USE, LEFT OVER, UNACCOUNTED, SPOILED AFTER PRINTING		142	142
2. RETURNS FROM NEWS AGENTS		none	none
G. TOTAL (Sum of E, F1 and 2—should equal net press run shown in A)		20,775	20,532
11. I certify that the statements made by me above are correct and complete.		SIGNATURE AND TITLE OF EDITOR, PUBLISHER, BUSINESS MANAGER, OR OWNER <i>Raymond J. Donohue</i>	
12. FOR COMPLETION BY PUBLISHERS MAILING AT THE REGULAR RATES (Section 132.121, Postal Service Manual)			
39 U.S.C. 3626 provides in pertinent part: "No person who would have been entitled to mail matter under former section 4359 of this title shall mail such matter at the rates provided under this subsection unless he files annually with the Postal Service a written request for permission to mail matter at such rates."			
In accordance with the provisions of this statute, I hereby request permission to mail the publication named in Item 1 at the phased postage rates presently authorized by 39 U.S.C. 3626.			
SIGNATURE AND TITLE OF EDITOR, PUBLISHER, BUSINESS MANAGER, OR OWNER			
<i>Raymond J. Donohue</i>			

Pi Chapter to Host . . .

MIDWEST REGIONAL BASKETBALL TOURNAMENT

SATURDAY FEBRUARY 26, 1976

Chapters Specifically Invited:

Iota Alpha Tau Iota Delta

Kappa Alpha-Chi Alpha Theta Chi

Sigma Gamma Delta Omicron Delta

Chapters are asked to contact Pi Chapter of their intention to participate immediately.

Chi Phi Fraternity, Phone (312) 475-9003
550 Lincoln Street, Evanston, Illinois

Greek Week Sets Good Year For Rho Iota Kappa

Fall semester 1975 started out with the brothers and pledges getting together to paint the house a week before school started. The house retained its old colors of white with red shutters.

Rush Co-Chairman, John Jacobs and Dave Bourget, guided a successful program which a total of 20 men pledged to Chi Phi. Eleven of the early pledges were initiated during the latter part of the fall term.

Our fall athletic program met with little success despite good turnouts and hard play. Socially, results were much better ending on a happy note with our annual Christmas party which was almost unanimously attended and enjoyed.

Spring term began with the election of the following new officers: President, Jeff Fuller; Vice-President, Tom Farragher; Secretary, Vin Saviano; Treasurer, Keith Perron; Pledge Master, Alex Ruggieri; Social Chairman, Doug Bennet; Historian, Tom Taccone; House Manager, Ian Kowalski; Stewards, Mike Ahern and Tom McNiff; Rush Chairman, Jerry Wolstencroft.

House occupancy was below capacity which placed a financial strain on house and kitchen operations. Despite this problem, events went socially and athletically. Our teams placed third in basketball and handball. Bob Froberg organized a clam bake dinner which raised nearly \$100.00 for Muscular Dystrophy. The event was attended by Ray Donohue, National Director, who was in Kingston for a chapter visit.

Greek Week 1976 made up for any of the small set backs that Chi Phi had during the year. Once again Chi Phi was number one in the Fraternity Division Competition. This sets a new school record of winning 1st Place four

consecutive years breaking Chi Phi's old record of three consecutive years. Awards are given to the top fraternity, top sorority, and overall best combined sorority/fraternity teams.

Brother Wells and Brother Creamer earned first place respectively in swimming and softball hitting while Pledge Arthur Defeo scored first in the beer chug. Other events during the I.F.C. sponsored event include egg tossing, tug of war, chariot appearance, chariot event, medley and swim relays and Greek sing. Our senior class is graduating never tasting defeat in the Fraternity Division Competition.

Following this exciting week, spring weekend brought the semester to a close with every brother and pledge waiting to start the 1976-77 year with a strong rush program and a strong brotherhood.

Tom Taccone

Xi Delta Loses Fire Battle, Wins Boxing Match

Florida Institute of Technology

Melbourne Beach volunteer Fire Department lost a two-hour battle to save the home of a community resident who resided next door to the University President. Fifteen Chi Phi's were involved in fighting the blaze reported at 5:00 A.M., November 27th. Because the chapter house is located 100 yards from the fire station, Chi Phi's are almost always the first to arrive at a community fire. Ten brothers wound up on the injured list from the unfortunate November occurrence... but none so seriously not to respond to a few Millers.

Fall quarter rush produced five crazy pledges two of whom enjoyed playing Evil Knevel at the chapter beach party. They did however stop short of plans to jump the Indian River in their 4WD

The National Interfraternity Conference held its annual meeting in Williamsburg, Virginia December 1 and 2nd. The event took the form of a major celebration honoring the history of the American College Fraternity System. Joining the fraternities was the National Panhellenic Conference in addition to Professional Interfraternity Conference and Professional Panhellenic Associations.

The Chi Phi Fraternity was represented by Grand Alpha Darryl McCall and National Director Ray Donohue.

The colonial town was chosen

Blazer.

Another big fall event was the preliminary boxing match of the Beach Association. The chapter helped promote the event with a preview bout in the F.I.T. Rathskeller starring the "Masapequa Mauler" and an unknown Theta Xi. It was Chi Phi by a KO.

Fishing this fall has really been hot with brothers bring in scores of mullet and blues, a bull shark, and the elusive blue marlin.

In all, Xi Delta is off to a good start this year.—by Peter S. Nielsen, Alpha.

Omicron Delta Looks Forward to January Rush

Miami University (Ohio)

Fifteen active brothers plus one pledge returned this Fall to Miami University and immediately began making improvements to the house. A new stove and TV have been purchased in addition to new curtains for the kitchen, dining room, TV room and living room. New floors have been laid in the dining room and entrance way and carpeting has been applied on the stairs. A great deal of work has been done by the brothers on their own rooms and for the first time in years we can proudly show off the entire house to prospective pledges and guests.

Our House Association President requested Arthur Wupper, Sigma '27 to inspect the current house and property for possible expansion. Brother Wupper is a practicing architect in Indianapolis, Indiana who designed the Chi Phi chapter house at the University of Indiana and its reconstruction following its 1969 fire. This would be a desirable move since we have an excellent location near the campus and commercial district, but only a local capacity of 14 men.

Two individuals close to our chapter continue to exert their positive influence. Cliff Suel, our former super cook and honorary member, has hand-picked his successor and will continue to be sure our meal plan remains tops on campus. Chris Rodbro, our new House Advisor, is providing excellent leadership and guidance and has probably done more to improve the house than anyone this last year. He drops in almost every day and many evenings too. We are all very grateful for the assistance and motivation he is

because it was the site of the founding of Phi Beta Kappa on December 5, 1776. Originally a social and literary society at The College of William and Mary, it changed its character to an honor society due to a flurry of anti-fraternity agitation in 1831.

"Our current social fraternity system sprang up and developed throughout the 1800's and continued to spread across our country as our nation developed," Donohue points out.

"Today there are an estimated 5,000,000 living members of college fraternities and sororities."

providing.

Spirits are excellent which bodes well for rush which begins in January. We are looking for one of our better years and the continued growth of Chi Phi on the Miami Campus.

Plans are currently being laid for this spring Chi Phi weekend. April 15, 1977 has been established so each member can begin making appropriate preparations.

To our alumni and brothers from other chapters, we extend the usual open invitation to visit their chapter whenever they are in the Oxford area.

By Charles A. Howard, Zeta

Rho Delta's New House Improves Picture

The Rho Delta Chapter held its eighth chartering formal on May 1st. After a fine dinner and several speeches, honor awards were presented to the chapter along with the announcement of new officers. For the coming year the officers are: Alpha, Keith Kronish; Beta, Karl Burgess; Gamma, Joel Shapiro; Delta, Kenneth Richter; and Zeta, David Liss.

Following the dinner and awards presentation, the entire night was spent partying and boogying to the sounds of Moes Jones. This event was truly the climax of the year.

The Brotherhood of Rho Delta occupied a new house in the fall of 1976 located on 3731 Wieuca Road. We would like to say thanks to brother Bates Block and Darryl McCall for their help and guidance without which our new house would not have been possible. The chapter has had three houses in a period of three years as a result of difficult zoning restrictions in our school area.

Much work and effort were put forth preparing the house for occupancy and rush activities. Completion of our basement party room and fantastic "Hey Baby Bar" compete with "Hollywood Bob Juke Box" made rush events doubly enjoyable contributing to a very successful 15-man pledge class.

Planning continues concerning on campus Greek housing—the start of a fraternity row. The Chairman of the planning committee is our present Alpha, Keith Kronish. We hope to have a permanent chapter house within the next few years.

Keith Kronish, Alpha
David Liss, Zeta

150th Club Contributors Listed

(Continued from page 1)

to a level in keeping with our past history.

It is believed that this list is complete. If there is a contributor not included, it is

a result of the transition of National Directors during the closing portion of the project. If this is the case, please let us hear from you for future recognition.

Supporters of \$150 or More

ALPHA
University of Virginia
Kitchin, William R. '49
Langford, George R. '50

BETA
Massachusetts Institute of Technology
DeConingh, E. H. '25
Janecwicz, Fred '61 Xi '65
Lamadrid, Lorenzo A. '44

GAMMA
Emory University
Block, Bates '40 H '42
Dorsey, Hugh, Jr. '33
Gentry, Baxter '27

Marshall, T. O., Jr. '48
Parker, William A., Jr. '50
Patterson, Solon P. '57
Turman, Jr. Pollard '34
Warren, William C., III '53
Winship, Charles T. '26

DELTA
Rutgers University
Buck, David T. '24
Shaw, Frederic W. '24

EPSILON
Hampden-Sydney College
James, John B., Jr. '53

ZETA
Franklin and Marshall College
Bassett, H. Y. '24

ETA
University of Georgia
Fraser, Jack C. '47

THETA
Rensselaer Polytechnic Institute
Hall, Gordon T. '46

IOTA
Ohio State University
Baker, Richard S. '67
Brockhage, Bernard S. '54
Chapman, Dr. Edward S. '31
Heist, C. H. '37
Jeckell, W. W. '34
Thomas, Charles W. '54
Wonso, James '34

KAPPA
University of Wisconsin
Crownhart, Charles H. '28
Hastings, W. Harold '27
Jensen, Wallace M. '29
Maier, V. Irwin '21
Rogan, Edward, II '65

LAMBDA
University of California
Foy, Fred C. '28
Ham, Richard C. '33
Lindus, F. H. '33
Moore, James R. '33
Moore, Joseph A., Jr. '29
Putnam, Windsor B. '25
Seymour, H. B. '17
Songer, Stanley E., Jr. '55
Whitby, F. R., Jr. '34

MU
Stevens Institute of Technology
Glenn, C. Leslie '21
Harrison, Wesley T. '28
Post, L. A. '18

NU
University of Texas
Greig, Ben Wayne '45

XI
Cornell University
Ballantine, Herbert W. '17
Collyer, John L. '17
Dockery, J. R. '28
Krebs, Frederick W. '12
Manda, Edward A., Jr. '45
Nethercot, D. G. '19
Ware, W. Barlow '47

OMICRON
Yale University
Hoyt, A. C. '02

PI
Iowa State University
Shepard, Fred E. '23

RHO
Lafayette College
Gilbert, Richard S. '62
Siebert, Charles T. '18
Wrightstone, Jay Wayne '61

SIGMA
University of Illinois
Countryman, I. B. '17
Fairfield, David W. '28
Flora, Kent A. '65
Golder, Lloyd W., Jr. '21
Hutchinson, Donald W. '25
Ingram, Ralph '18

TAU
University of Alabama
McDonald, Sterling '52

PHI
Amherst College
Keith, George E. '27

CHI
Dartmouth College
Carpenter, G. R. '10
Landauer, James D. '23

PSI
Lehigh University
Conneen, John '30
Gott, Edwin H. '29
Waterman, John A. '28

OMEGA
Georgia Institute of Technology
Dryman, Talmadge L. '45
Gilham, Henry L., Jr. '51
Wardlaw, William C. '27

ALPHA-ALPHA
University of North Carolina
Boone, James F. '37
Gilbert, Bonn A., Jr. '64

ALPHA-TAU
University of Michigan
Andreae, Maynard '32
Effler, Dr. Donald B., '37
Flintosh, John S. '59
Gildner, Henry G. '24
Gladfelter, C. J. '33
Hale, Clayton G. '24
Kinney, Harry S. '32
Post, Albert M. '30
Reade, R. S. '33

ALPHA-CHI
Ohio Wesleyan University
Dean, John L. '26
Guin, Russell '17
Jones, Wyford '34
Martin, James W. '32
McClure, Dr. George W. '18
Scroggins, Clayton L. '42

ALPHA DELTA
Pennsylvania State University
Olsen, Kenneth E. '64
Rex, David J., Jr. '16

EPSILON DELTA
Oregon State University
Caldwell, Brooks R. '25
Truax, Merritt W. '33

ETA DELTA
University of Southern California
Hoffman, Elmer H. V. '18
Jessup, Melvin R. '45
Thomas, C. Moreland '45
Werdin, E. Russell '29

THETA DELTA
University of Florida
Cody, Robert S. '40
Helliwell, Paul L. E. '36
Macbeth, Joseph O. '50
McCall, Darryl '50 G '52 Psi D'70
Ramsaur, G. C. '39
Updike, Arch R., Jr. '43

IOTA DELTA
Indiana University
Craft, John D. '60
Gehring, Dr. Thomas A. '60
Grant, Robert G. '69
Hill, James B. '60

RHO IOTA KAPPA
University of Rhode Island
Emerson, Robert E. '72

ALPHA THETA CHI
University of Nebraska
Cooper, Guy L. '27
Schneiderwind, Steven L. '73
Smith, Victor D. '36

PSI DELTA
University of N.C. at Charlotte
Parnell, Edward L. '75

CHAPTERS, ASSOCIATION AND BUSINESS SUPPORT
Lambda Chapter
Sigma Delta Chapter
Gamma Trust Association
Lambda Alumni Association
Xi Chapter House Association
Rho Chapter House Association
Briarfield Association (Psi Alumni)
Alpha-Chi Alumni Council
Psi Delta Foundation, Inc.
Bonn Gilbert Company
Cody Publishing Company

CONTRIBUTORS OF LESS THAN \$150
Batten, Wilson, E '22
Cooper, Joseph W., L '37
Gillett, John, I '35
Junker, Duane G., A D '63
McDevitt, H. H., A-X '16
Morgan, William F., G '57
Parker, William A., Ome '19
Yargern Dana, K '69

ALUMNI NOTES

ALPHA

James D. Keppel '67, writes, "When I was in school, I most appreciably received a loan from the Chi Phi Educational Trust Fund. Now that the tides have changed slightly, I am enclosing a check for \$50.00 for that fund in appreciation for the assistance it gave me in time of need. Hopefully, it could help someone else in the Alpha chapter, but not necessarily." Now Vice President, George A. Robinson & Company, East Rochester, N.Y.

James W. Orr, Jr. '71, Birmingham, Alabama is first year resident, department of Obstetrics and Gynecology at University of Alabama.

William L. Stobart '74, Hopewell, N. J. recently graduated from Purdue with M.S.I.A. degree and named (awarded) Krannert Scholar for being in top 5 in class. Is in operations research for RCA Corp.

BETA

Lt. Col. Robert E. DeMichaels '60, is selected for Col. USAF effective October 1976. Currently serving as Staff Meteorologist, Aerospace Data Facility, Buckley ANG Base,

Dr. McIver W. Edwards, Jr. '56, is Assistant Professor of Anesthesia and Physiology at the University of Pennsylvania.

A. E. MacAdam, III '35, Vero Beach, Florida was appointed Councilman to Town Council of Indian River Shores, Florida, October 1976.

Charles A. Rehwaldt, Jr. '60, is Assistant Vice-President in charge of marketing at James R. Dunlop, Inc., Washington, D. C.

Elbridge Wason '20, Wellesley Hills, Ma. says, "There have been members of the Wason family as Chi Phis for 89 years continuously.

GAMMA

Dexter C. Followill '67, Columbus, Ga. is Member Board of Directors, First Federal Savings & Loan.

Capt. Charles T. Harrison, III '69, is with USAF, Area Defense Counsel, Lindsey Air Station, Wiesbaden, Germany.

R. Preston Herren '64, Atlanta, Ga. is attending Georgia State University for M.B.A. degree.

Judge G. Ernest Tidwell '53, has been elected Chairman of the Judicial Council of Georgia.

The purpose of the Council is to oversee reporting on the status of courts in Georgia and in making recommendations to improve the court system in the state.

Robert E. Underwood '73, Atlanta, Ga. graduated from the Amos Tuck School of Business Administration at Dartmouth College in 1975 with an MBA degree. Now employed by Price Waterhouse & Company, CPA's in Atlanta.

Dr. Howard V. Weems, Jr. '44, Gainesville, Fl. is currently serving as President of the Florida Entomological Society. He was also an invitational speaker at the XV International Congress of Entomology meeting in Washington, D.C. in August. Continuing to serve as Chapter Advisor for Theta Delta chapter.

DELTA

Kenneth P. Davie '68, was recently appointed attorney for the Kearny Board of Education. He has also opened up his own office for the general practice of law, Kearny, N.J.

Karl E. Lanker '51, Lancaster, Ohio has been registered in Marquis 1976-1977 Who's Who, Midwest. Oldest daughter Kathie is a freshman at Ohio University majoring in foreign languages.

Roger W. Wessells '64, Houston, Texas was promoted to Lieutenant Commander in Navy Reserve.

EPSILON

John L. Bruner '33, Richmond, Va. retired Dec. 1, 1976 after 30 years as Bureau Chief, Virginia Dept. of Public Welfare.

Philip A. Hoge '59, Wilmington, De. is Vice-President, Carroll W. Griffith Company Realtors; Vice-President New Castle County Board of Realtors; Director, University & Whist Club; and Director Delaware Ducks Unlimited.

ZETA

William H. Sowers '39, Biloxi, Ms. has been selected for promotion to Lt. Col. in early 1977. Received M.A. in Human Resources Management from Pepperdine University.

John B. Toppin '38, Mt. Joy, Pa. retired as Executive Deputy Secretary of Banking, Commonwealth of Pa. on Oct. 27, 1976 after 30 years service.

ETA

J. Hugh Gordon '71, Lutz, Fl. joined firm of Coopers & Lybrand, CPA's, Tampa, Florida in July 1976. Admitted to Georgia Bar in June 1976.

IOTA

William F. Andrews '70, Columbus, Ohio recently changed jobs from Western Electric to Toledo Scale, April, 1976.

John Gillette '35, Columbus, Ohio writes, "Retired in Good Health. Praise the Lord!"

Robert J. Kattman '66, Whitefish Bay, Wi. was made Principal of Richards School, Whitefish Bay Public Schools, August 1975.

Clifford Lynch '62, Applecreek, Ohio has been superintendent of schools at Southeast School District since 1970; member of the Board of Wayne County Mental Health & Retardation; and President, Applecreek Voluntary Fire Dept.

William H. Tyson '15, Akron, Ohio writes "Retired, Goodyear, 1959; married 1922; two sons; 4 grandsons and five granddaughters."

KAPPA

John S. Clarke '63, Marietta, Ga. was promoted to Sales Manager, Computer Systems for Hewlett-Packard in Atlanta, Dec. 1976.

Harry J. Humphries '53 is currently running for aldermen in Brookfield, Wis. Hope to make it!

Garry R. Konwinski '73, Kalamazoo, Mi. is teaching a soil classification course at Western Michigan University where he is currently working on a Masters Degree in the Geology Dept.

Frank S. Palen '54, Weybridge, Surrey, England is on loan to Esso Libya, Inc. from Exxon USA. Has two daughters and three sons.

Charles R. Rydberg '70, Janesville, Wis. received masters degree at University of London, now working as planner at Janesville, Rock County.

Otis H. Segler '36, Lookout Mountain, Tn. is graduate of The American College of Life Underwriters, C.L.U.

MU

Charles L. Drake '14, Old Greenwich, Ct. writes, "Still active in community organizations, Boy Scouts, Etc.; Veteran-World War One."

John Vitale '73, Bergenfield, N.J., received Doctor of Dentistry, May 1976.

Mark Wheeler '75, Barrington, R.I., received his commission in the Naval Air Corps.

NU

Raymond J. Daniel, Jr. '70, Stafford, Texas writes, "Please continue your efforts to recolonize Nu Chapter at University of Texas, Austin."

Jimmy J. Harrell '60, Sherman, Texas is Chief of Staff 1977, Sherman Community Hospital.

Thomas H. Thompson '67, is Captain, U.S. Army, U.S. Army Engineer School, Ft. Belvoir, Va.

XI

Ronald Geren '59, Charlottesville, Va. was promoted to Senior Vice-President for Sales and Marketing, Morton Frozen Foods.

Frank J. Irving '35, Stuart, Fl. writes, "Like winters in Florida. We travel in work to Middle East Europe and South America."

Richard H. Metzler '56, Pawling, N.Y. is Vice-President, Marketing, Revlon International.

RHO

Warren D. Cole '71 has been promoted to Supervisor of Process Engineering for the Parkersburg, West Virginia plant of Corning Glass Works.

TAU

James P. Waters, Jr. '52, Birmingham, Ala., Consulting Engineer, writes that he has two grandchildren, Kim, age 2 and Christian, age 6 months.

PHI

Alexander W. Siegel '63, Pittsburgh, Pa., Psychologist, promoted to full Professor, Feb. 1977.

OMEGA

Charles R. Renner, III '53, Atlanta, Ga. joined Aderhold Construction Company in October 1976.

ALPHA-ALPHA

David R. Badger '69, Charlotte, N.C., Attorney, started sole proprietorship after leaving partnership of Whitfield, McNelly, Norwood and Badger on June 1, 1976.

Charles R. Jonas '25, Lincolnton, N.C., former Representative in the United States Congress was reelected nine times. In 1972 he chose to retire from Congress to a law practice in Lincolnton and Charlotte. He was one of five alumni cited in "Distinguished" awards held for the 183rd anniversary University Day program on Oct. 12.

James H. Purks, III '59, Tallahassee, Fl. worked as State Press Secretary-Florida for the Carter-Mondale campaign; now has been hired as Special Assistant in the White House Press Section for the Carter-Mondale Administration and will work in Washington, Executive Building, Washington, D.C.

Charles A. Ross '59, Atlanta, Ga. was promoted to Branch Manager, Atlantic Coast States Branch, Honeywell Information Systems located in McLean, Va.

Greig J. Soeder '75, was promoted to District Sales Manager, The Southwestern Company of Nashville, Tn.

Richard D. Williams '65, Savannah, Ga. is currently Executive Vice-President of Bernard Williams & Company.

ALPHA-TAU

David G. Cotter '71, Lansing, Mi. graduated from Thomas M. Cooley Law School with Distinction on Jan. 1, 1976.

Ralph F. Fear '57, Manistee, Mi. writes that he is practicing Orthodontics there.

William F. Ross '31, Chapel Hill, N.C. is Alumni Advisor to Alpha-Alpha chapter, and is a retired engineer.

George L. Sawyer '24, Traverse City, Mo. writes, "Work around the house, travel, and fishing keeps us (Mrs. and I) plenty busy after entertaining and being entertained by our friends."

ALPHA-CHI

Ronald D. Hansen '69 received Ph.D from University of Connecticut, 1974; now assistant professor of Psychology, Oakland University, Rochester, Michigan.

ALPHA DELTA

Richard W. DiBella '73, Pittsburgh, Pa. graduated from Duquesne University School of Law, June 6, 1976.

Dennis Malick '60, is makeup Editor, Tide-water Living Section, The Virginian-Pilot, Norfolk, Va.

Terrence M. McCarthy '67, has just purchased a Public Accounting practice in Cupertino, Ca. Everything else is well. Good luck to everyone this year.

GAMMA DELTA

Michael S. Nelson '69, Minneapolis, Mn. is now living in southern California and working at Universal Studios Tour, in Universal City, Ca., but still wants his mail sent to Minneapolis.

Gary L. Schwants '73, Baton Rouge, La. was promoted to Refining Engineer, Exxon Company, USA.

THETA DELTA

Richard S. Dorrie '69, Clearwater, Fl. was promoted to Quality Engineer in Feb. 1976, Florida Power Corp.

William J. Douville '74, Orange Park, Fl. is First Lieutenant, Air Force Navigator.

Brian C. Ellis '61, Tampa, Fl. recently completed term as Chairman of Tax Section, the Florida Bar.

Stephen D. Hussel '72, Melbourne, Fl. was recently named Vice-President of Sales for East Central Florida Area from Stuart to Daytona Beach, Hussel Moving & Storage Company.

Carl J. Kistel, Jr. '72, Brandon, Fl. is Furniture Buyer working out of Tampa Central Office, Maas Brothers.

S. Wade Leonard '25, Smyrna, Ga. writes, "Retired, no marriage, no births, no promotions, no honors."

Luis C. Linares '69, Gainesville, Fl. is working on a Ph.D at the University of Florida.

Robert J. McCann '40, Ft. Lauderdale, Fl. is Vice-President, Doors & Hardware Institute, International Institute.

W. Kelly Prior, Jr. '66, Dunedin, Fl. writes, "I

have been in real estate sales for 5½ years and owned my own office for 3 years. After college I played 2 years of minor league baseball in The Oakland A's Organization before going into real estate.

Richard C. Supinski '69, Winston-Salem, N.C. is Manager of Internal Audit for Piedmont Airlines in Winston-Salem.

IOTA DELTA

Steven C. Pappas '76, Indianapolis, In. is Lieutenant, U.S. Army to be stationed in Mannheim Germany for 3½ years as of May 1977.

RHO IOTA KAPPA

Robert W. Zompa '63, Cranston, R.I., since Jan. 1974 has been supervisor of manufacturing systems analysis and design for Brown and Sharpe, Ltd., Plymouth, England, as well as doing analysis and design work at North Kingtown, R.I.

NU DELTA

Gordon D. Graham '73, Gainesville, Fl. is entering Army in June and will be assigned to Wm. Beaumont Hospital at Ft. Bliss, El Paso, Texas.

XI DELTA

Mark K. Blimine '74, is attending Temple University Dental School, first year, any Chi Phis in the neighborhood, please stop by.

Martin A. Boyer, Jr. '73, Reading, Pa. recently received M.B.A. at Lehigh University.

Brian H. Gahrn '72, Essex Junction, Vt. is LTJG., U.S. Navy, aboard U.S.S. Dace (SSN 607).

William R. Herzog '75, Glen Ellyn, Ill. is a Senior Production Technician, Hyland Laboratories at Roundlake, Ill.

Charles J. Messina '74, Pittsburgh, Pa. received Master's Degree in Chemical Metallurgy from Lehigh University in Jan. 1976. Now Associate Research Engineer with United States Steel in Monroeville, Pa.

Bob Rupunik '74, Bethesda, Md. is currently in Navy and presently going back to school to work on my Masters, into the Medical Lab research field and will finish at George Washington University in Feb. 1977.

OMICRON DELTA

Roger D. Edwards '74, Dyess AFB, Texas was promoted to First Lieutenant, USAF Navigator.

RHO DELTA

Richard S. Tabas '78 is now with Acorn Iron

Supply Company in Philadelphia, Pa., as Junior Vice-President of the firm.

SIGMA DELTA

Richard M. Hawkins '71, Grass Valley, Ca., attorney, became a full partner in the law firm of Larue & Francis in Nevada City, Cal.

ALPHA-PI

Roy E. Romig '32, Ft. Myers, Fl. is retired Chemistry Teacher, Junior College from North Iowa area Community College, Mason City, Iowa.

PSI DELTA

James B. Roberts, III '70, Meridian, Ms. is special agent of the year for Southeast Region with Bureau of Alcohol, Tobacco and Firearms, U.S. Treasury Dept.

CHI (Dartmouth)

Harry P. Jeffrey, Jr. '59, Laguna Beach, Ca. is 1976 candidate, Republican nomination U.S. House of Representatives, California's 40th Congressional District.

BETA DELTA

John M. Rathbun '24 of Portland, Oregon retired since 1971 hobbies—shell collecting, travel, Indian artifacts.

Don W. Youatt '53, Alexandria, Va., retired Lt. Col. USAF after 22 years, Feb. 27, 1976. New Career, Manager Middle East, Exports, Knoll International, March 1, 1976.

ZETA DELTA

John V. Heiser '57, Ivoryton, Ct. is Vice-President Elect, Rotary Club of Essex, Ct.

KAPPA DELTA

Roy S. Lamberton '68, Commerce, Texas, Program Manager-KETR, station won Wendel Hayes Public Service Award from United Press International in Texas, I was Executive

LAMBDA DELTA

James W. Morford '68, Minneapolis, Mn. was recently made President of his company, Doctors Diagnostic Laboratories.

TAU DELTA

Bevis L. Clark, Jr. '68, Atlanta, Ga., joined Marriott Corporation in Feb. 1976 and is now Personnel Manager of the Atlanta, Ga. Marriott Hotel.

SIGMA (Wofford)

James H. Glenn '09, East Dorset, Vt. spends his summers here and his winters with his daughter, Carroll Glenn, a world famous Violinist, in New York.

PLEDGES

AUGUST 11, 1976—JANUARY 12, 1977

ALPHA (14)

Michael Bigham, Lancaster, Pa.
David Bennett, Fayetteville, W. Va.
John Modi, Wilmington, De.
Steve Berkeley, Pawling, N.Y.
Mark Levinstein, Berkely Hts., N.J.
John Reardon, Lynbrook, N.Y.
Neal Goodloe, Staunton, Va.
Jim Turner, Carthage, Tn.
Jimmy Harris, Staunton, Va.
John Serpe, Massapequa, N.Y.
Andy Norwald, Brookfield Center, Ct.
Steve Smart, Danbury, Ct.
Joseph Poevio, Courtland, N.Y.
Andy Hudick, Harrisonburg, Va.

BETA (16)

Peter Yung-Chan Chiu, Houston, Tx.
Christopher V. Dunn, West Newton, Ma.
Joseph J. Fedora, Granite City, Il.
Richard G. Kochinski, Cleveland, Oh.
Andrew R. Leed, Ithaca, N.Y.
Joel E. Lillenkamp, St. Louis, Mo.
August E. Linzel, Sarasota, Fl.
Roberto L. Aparicio, Miramar, Puerto Rico
Robert C. Lowry, Kalamazoo, Mi.
Gerardo O. Moreno, Midland, Tx.
Randolph S. Rose, South Pasadena, Ca.
Stewart S. Rumsey, Wilmington, De.
Alex Sambirsky, Chicago, Il.
Michael W. Sereida, Bloomfield, Ct.
Bruce S. Shainwald, Holbrook, Ma.
Richard G. Struve, Fresno, Ca.

GAMMA (27)

Jeff Biegelsen, Hollywood, Fl.
Charles Boston, Pembroke, Fl.
Randal Brown, Palm Beach, Fl.
Kevin Daus, Louisville, Ky.
Steven Essig, Cincinnati, Oh.
Gregory Finch, Westlake Village, Ca.
James Fox, Columbus, Ga.
Robert Franks, Jr., Stone Mountain, Ga.
Venerando Guelpa, Pensacola, Fl.
David Hamlin, Wilmington, De.
Cecil Harvell, Morehead City, N.C.
Carl Herring, Decatur, Ga.
Randall Holton, Cornelia, Ga.
Dana Lam, Augusta, Ga.
John McBride, Ft. Worth, Tx.
Gary McGuckin, Charleston, S.C.
Anthony Menendez, Stony Brook, N.Y.
Peter O'Hanlon, East Point, Ga.
William Reed, Jr., Savannah, Ga.
David Reinhardt, Port Washington, N.Y.
Gary Schwartz, West Hartford, Ct.

Glen Shealy, Wilmington, De.
David Sher, Bethesda, Md.
William Shibley, West Springfield, Ma.
Hank Siegel, Yardley, Pa.
Robert Sunshine, Tequesta, Fl.
John W. Walch, Sarasota, Fl.

ZETA (16)

Michael Bold, Bethlehem, Pa.
Greg Dinnocenti, Royersford, Pa.
Rick DeKorte, Franklin Lakes, N.J.
David Jacobsen, Tarrytown, N.Y.
Brad Keith, Lancaster, Pa.
Larry Lachman, Syosset, N.Y.
Steve Mapes, Princeton, N.J.
Jim May, Sharpville, Pa.
Tim McCrum, Pittsburgh, Pa.
John Nikola, Phoenix, Md.
John Osborne, Castle Cove, Australia
Ralph Paterno, Cranford, N.J.
Dwight Reynolds, Califon, N.J.
John Sieber, Pittsburgh, Pa.
John Stamatokos, Allentown, Pa.
Pete Weprinsky, New Brunswick, N.J.

IOTA (4)

John F. Williams, Columbus, Oh.
Richard E. Tice, Woodcliff Lake, N.J.
Mark H. Matheny, Columbus, Oh.
Brian C. Talbur, Whitehouse, Oh.

KAPPA (11)

Mike Casey, Milwaukee, Wi.
Rick Chambliss, Madison, Wi.
Scott Clements, Glenview, Il.
Phil Collins, Beloit, Wi.
Mike Endres, Mequon, Wi.
Bill Gucciardi, Milwaukee, Wi.
Brian Jarrel, Madison, Wi.
Steve Polley, Madison, Wi.
Ted Pulkownik, Oconomowoc, Wi.
Bill Randquist, Brookfield, Wi.
Bob Winke, Milwaukee, Wi.

LAMBDA (13)

John P. Christian, San Francisco, Ca.
Jim L. Wraith, Alamo, Ca.
Thomas C. Lufkin, Palo Alto, Ca.
Paul R. Magruder, Los Altos Hills, Ca.
Robert H. Finley, Piedmont, Ca.
Edward J. Wright, Jr., Bellevue, Wa.
Joseph O. Hawkins, Walnut Creek, Ca.
James D. Goldhawk, Moraga, Ca.
Darrin P. Fleming, Concord, Ca.
John T. Maxwell, San Marino, Ca.
Ray Raskoff, San Francisco, Ca.

Mitch Friedman, San Anselmo, Ca.
Clay Collier, Daly City, Ca.

PI (13)

David Applegate, Grand Blanc, Mi.
Richard Burling, Sun Prairie, Wi.
Kevin Dickson, Weenah, Wi.
Rafael Espinosa, III, Villa Park, Il.
Glenn Hunt, Ringwood, N.J.
James J. Kohout, III, Oklahoma City, Ok.
Martin Krongold, Shaker Heights, Oh.
David Lansky, Buffalo, N.Y.
Juan Lopez, Chicago, Il.
James McIntyre, Albert, Ks.
Jeffrey Perelman, Youngstown, Oh.
Richard Rockwell, Florissant, Mo.
David Weissman, Shaker Heights, Oh.

SIGMA (1)

Charles J. Crain, Springfield, Il.

TAU (12)

Philip D. Anglin, Huntsville, Al.
Charles G. Capps, Pensacola, Fl.
Wilson C. Cooney, Jr., Selma, Al.
Daniel T. Couch, Oxford, Al.
Douglas D. Counter, Athens, Al.
Kenneth B. Gamble, Decatur, Al.
Robert A. Garfrerick, Bynum, Al.
Phillip D. Hutchison, Panama City, Fl.
Thomas H. Mathis, Birmingham, Al.
John S. Seguer, Memphis, Tn.
Todd D. Wagner, Leesport, Pa.
Robert A. Yarbrough, Mobile, Al.

PSI (2)

Joe Dussinger,
Chip Uricchio,

OMEGA (13)

Gary S. Brush, Cincinnati, Oh.
Robert H. Callaway, Jr., Apopka, Fl.
James P. Carden, Jr., Cherry Hill, N.J.
Bryan K. Edenfield, Atlanta, Ga.
Kerien W. Fitzpatrick, Clinton, Ia.
Sidney H. Goode, Rock Hill, S.C.
Brian A. Malone, Annandale, Va.
Charles S. McCall, Decatur, Ga.
Bryan B. Moore, Salisbury, N.C.
Thomas F. Ruffer, Conroe, Tx.
Paul R. Sorensen, Chagrin Falls, Oh.
John M. S. Stephenson, Vienna, Va.
Gehart L. Vance,

ALPHA-ALPHA (5)

Phillip J. Hamrick, III, Winston-Salem, N.C.
Frank M. King, III, Raleigh, N.C.
Lee M. Greene, Elizabethtown, N.C.
Thomas J. Bogan, Greensboro, N.C.
Charles T. Urban, III, LaGrange, Il.

EPSILON DELTA (24)

Wayne Baldwin, Waldport, Or.
Mike Bell, Roseville, Ca.
Peter Benson, Rock Falls, Il.
Mike Burnam, Lake Oswego, Or.
John Crawley, Portland, Or.
Richard C. Edwards, Portland, Or.
John Foley, The Dalles, Or.
Steve Haynes, Portland, Or.
John Matthew, Lake Oswego, Or.
Rick Martinson, Creswell, Or.
Allen Meengs, The Dalles, Or.
Gerald Milliron, Portland, Or.
Mark Moreland, Newberg, Or.
Tim Potter, The Dalles, Or.
Craig Simonson, Coos Bay, Or.
Dwight Stevenson, Portland, Or.
Andy Standerfer, Tigard, Or.
Steve Struck, Parkdale, Or.
Jonathon Wexler, Portland, Or.
Gerry Williams, Portland, Or.
John Billups, Portland, Or.
Rob Jack, Silverton, Or.
Richard Stonex, II, Silverton, Or.
Robert Branson, Portland, Or.

ETA DELTA (12)

Drew Panico, Anaheim, Ca.
Mark Courtner, LaMirada, Ca.
David Hellman, Encino, Ca.
Steve Broadbent, LaMirada, Ca.
Mark Sheedy, Tazana, Ca.
Mark Kaufman, Temple City, Ca.
Greg Hammond, LaMirada, Ca.
Robert F. McNulty, Covina, Ca.
Peter Grande, Los Angeles, Ca.
Akitoshi Hamada, Pasadena, Ca.
Erwin Furukawa, Sacramento, Ca.
Robert Hedrick, Alhambra, Ca.

THETA DELTA (22)

William D. Bone, Delray Beach, Fl.
Dale L. Borne, Clearwater, Fl.
David E. Bornmann, Lakeland, Fl.
Webster B. Essex, Ormond Beach, Fl.
Daniel E. Cooper, West Palm Beach, Fl.
Carl L. Graves, Plantation, Fl.
Brian T. Hamill, Towson, Md.
William L. Hartley, Jr., Inverness, Fl.
Howard L. Larsen, II, Inverness, Fl.
Eric A. Lustig, North Palm Beach, Fl.
Gary A. King, West Palm Beach, Fl.
Horacio Loschak, Tamarac, Fl.
Mark S. MacDonald, West Palm Beach, Fl.
William A. Midulla, Tampa, Fl.
Patrick J. O'Leary, Lakeland, Fl.
Keith T. Ott, Lincolnshire, Il.
Webster F. Rowe, Hollywood, Fl.
Joseph F. Risi, Palm Beach Gardens, Fl.
Gregory T. Smith, West Palm Beach, Fl.
Todd R. Weinkle, Hallandale, Fl.
David C. Wittig, Gainesville, Fl.
Jeffrey D. Wyke, Bradenton, Fl.

IOTA DELTA (12)

Scott L. Harlib, Michigan City, In.
John V. McCarthy, III, Winnetka, Il.
Gary L. McNutt, Indianapolis, In.
Robert E. Meyer, Jr., Indianapolis, In.

Terrence A. Murray, Valparaiso, In.
Marty F. Pieratt, Butlerville, In.
Charles Roth,
Steven M. Sauve, Carmel, In.
Timothy H. Smith, Midland, Mi.
Mark D. Sharpe, Carmel, In.
Michael G. Staley, Bloomington, In.
Ralph G. Woryna, Gary, In.

RHO IOTA KAPPA (21)

Bruce Brown, Wakefield, R.I.
Todd Buckley, Warwick, R.I.
Vin Caramadre, Cranston, R.I.
Rick Dix, East Providence, R.I.
Rich Epstein, West Long Branch, N.J.
Dave Fales, East Providence, R.I.
Steve Grinnel, Warwick, R.I.
Eric Harper, Barrington, R.I.
Chad Hoffmeister, Warwick, R.I.
Rich Larkin, Wakefield, R.I.
Dave Maisch, Holliston, Ma.
Hugh Markey, Warwick, R.I.
Joe Matthews, Westerly, R.I.
Neil Moran, Lincoln, R.I.
Mark Morrissey, North Providence, R.I.
Pat Naughton, Plymouth, Ma.
Stu Rayner, Charlestown, R.I.
Jeff Richard, Duxbury, Ma.
Jay Wildgoose, Lincoln, R.I.
Mark Williams, Wakefield, R.I.
Mike Zinni, Barrington, R.I.

ALPHA THETA CHI (16)

David L. Achey, Roswell, N. M.
John R. Bauerle, Jr., Omaha, Nb.
Gregg S. Biba, Geneva, Nb.
Lynn A. Carlson, Shickley, Nb.
Paul J. Colling, McCook, Nb.
Daniel E. Engdahl, Omaha, Nb.
John L. Engdahl, Omaha, Nb.
Thomas F. Ferraro, Omaha, Nb.
Jeffrey R. Garey, Grand Island, Nb.
Douglas P. Gobel, Fremont, Nb.
Philip J. Jeffrey, Omaha, Nb.
Robert C. O'Connor, Lincoln, Nb.
Paul R. Stevens, Hardington, Nb.
Douglas K. Vasey, Cozad, Nb.
James C. Vitek, Lincoln, Nb.
Duane E. Waltke, Tryon, Nb.

DELTA XI (1)

Jerry M. Huffman, Charleston, W. Va.

MU DELTA (2)

David F. Dunnavant, Elkmont, Al.
John R. Brower, North Redington Beach, Fl.

NU DELTA (11)

Lawrence Kosloski, Miramar, Fl.
Roger Gorge, Carol City, Fl.
William Joyce, Margate, Fl.
Blake Hadley, Indiantown, Fl.
Thomas Withner, Plantation, Fl.
John Bates, Plantation, Fl.
David Sirugo, LaPort, In.
Andrew Gold, Miami, Fl.
Raymond Slavin, Plantation, Fl.

BIRTHS

ALPHA

Brother and Mrs. **James W. Orr, Jr.** '71 announce the birth of a daughter, Alison Claire, born Oct. 22, 1976.

GAMMA

Brother and Mrs. **Warren A. Cox** '65 announce the birth of a daughter, Ellen Rhea, born April 11, 1975.

Brother and Mrs. **Jackson T. Duncan, Jr.** '64 announce the birth of a son, Ian Thomas, born in 1975.

Brother and Mrs. **Robert S. Jones** '70 announce the birth of a son, Justus, born May 5, 1976.

DELTA

Brother and Mrs. **Roger W. Wessels** '64 announce the birth of a daughter, Stacey Anne, born April 14, 1976.

ZETA

Brother and Mrs. **Richard M. Barrett** '61 announce the birth of a daughter, Lindsay Elizabeth, born Nov. 7, 1976.

ETA

Brother and Mrs. **Walter F. Pohl, Jr.** '71 announce the birth of a son, Andy, born Jan. 10, 1975.

Brother and Mrs. **Michael N. Thompson** '71 announce the birth of a son, Michael Neal, Jr., born Sept. 11, 1976.

KAPPA

Brother and Mrs. **Gary R. Konwinski** '73 announce the birth of a son, Joshua Robert, born Nov. 20, 1976.

MU

Brother and Mrs. **Charles E. Nagy, Jr.** '67 announce the birth of a daughter, Sonya Lynn, born Oct. 3, 1976.

Brother and Mrs. **Phillip R. Rubin** '65 announce the birth of a son, Marc Warren, born July 25, 1975.

NU

Brother and Mrs. **Thomas H. Thompson** '67 announce the birth of a son, Thomas, Jr., born Sept. 4, 1976.

James W. Kelly, Tallahassee, Fl.
George T. Lyon, Tallahassee, Fl.

XI DELTA (5)

Stephen H. Hansel, Alexandria, Va.
Whitfield C. Bourne, Fairfield, Ct.
Johnathan A. Ferguson, East Lyme, Ct.
William J. Stephens, Seagirt, N.J.
Curtis E. Sayles, Ozawkie, Ks.

OMICRON DELTA (1)

Robert P. Jarvis, Rocky River, Oh.

PI DELTA (3)

Mark Westbrook, Sistersville, W. Va.
Roger Miller, Sissonville, W. Va.
James Nash, Alderson, W. Va.

RHO DELTA (4)

Mark Levine, Savannah, Ga.
Frank DePalma, Newton, Ct.
Larry Martiny, Altamonte Springs, Fl.
David Nowatzki, Tucker, Ga.

SIGMA DELTA (3)

Robert W. Blake, Lafayette, Ca.
Delbert C. Gee, Livermore, Ca.
Paul A. Marshall, Lafayette, Ca.

PHI DELTA (8)

Robert Y. Patterson, III, Winter Park, Fl.
Robert N. Lindler, Union, S.C.
Robert M. Coleman, Lynchburg, Va.
Wayne E. Kern, Kingsport, Tn.
Michael G. Derrick, Memphis, Tn.
Rodney A. Brenneman, Memphis, Tn.

ALPHA (17)

John R. Gilchrist, Falls Church, Va.
Robert A. Latour, Jr., Lewisburg, Pa.
Donald G. DeBuck, Alexandria, Va.
Michael J. Hojnowski, Warrensville Hgts., Oh.
Allen R. Swope, Narrows, Va.
Robert W. Lindsey, Alexandria, Va.
William J. Joyce, Malverne, N.Y.
Ward W. Johnson, Jr., Richmond, Va.
Daryl G. Brewster, Westfield, N.J.
Joseph J. Resua, Annandale, N.J.
William F. Garrahan, Jr., McLean, Va.
Henry C. Church, Richmond, Va.
Craig E. Dunn, Reston, Va.
Charles C. Reardon, Lynbrook, N.Y.
Timothy J. Jessel, Wheaton, Md.
Douglas A. Lyons, Arlington, Va.
Jeffrey R. Wilson, Fairfax, Va.

Michael C. S. Folsbury, Signal Mountain, Tn.
Kenneth C. Lynch, Kingsport, Tn.

PSI DELTA (12)

Tim Franklin, Goldsboro, N.C.
Gene Hartis, Charlotte, N.C.
Gary Mornhienway, Middletown, Ct.
George E. Evans, Bevard, N.C.
Gregory J. Matthews, Oakhurst, N.J.
Mark Moore, Concord, N.C.
Dan Riggs, Gastonia, N.C.
Geoffrey S. Silverstein, Gastonia, N.C.
Tim Worley, Winston-Salem, N.C.
Steve Hanner, Charlotte, N.C.
James J. Jetton, Charlotte, N.C.
Paul Merrit, Charlotte, N.C.

ALPHA ZETA (12)

Timothy E. Alexander,
William Blount, Jr.,
Charles L. Cooley, Jr.,
Robert D. Harber,
Philip McGuire,
Robert L. McNabb, Jr.,
Beverly E. Phillips,
Jeffery L. Phillips,
Jim E. Reed,
Anthony B. Nix,
Charles R. Tedder,
Charles W. Upchurch,

BROWARD COLONY (4)

Greg Garcia, Ft. Lauderdale, Fl.
Ron Sutton, Ft. Lauderdale, Fl.
Frank Pucillo, Plantation, Fl.
Jack Hemberger, Margate, Fl.

INITIATES

AUGUST 11, 1976—JANUARY 12, 1977

IOTA (4)

Terrence A. Brown, Columbus, Oh.
Thomas S. Sailer, Grove City, Oh.
Ronald C. Clifton, Hubbard, Oh.
Michael E. Collier, Pickerington, Oh.

KAPPA (4)

Thomas C. Cushing, Janesville, Wi.
Todd W. Romance, Whitefish Bay, Wi.
Jeffrey L. Haupt, Whitefish Bay, Wi.
David S. Walton, Brookfield, Wi.

LAMBDA (2)

William C. Ward, Berkeley, Ca.
Damon L. Wood, Portola Valley, Ca.

XI (9)

Sherwin A. Suss, Long Beach, N.Y.
John W. Sullivan, Jr., Plantation, Fl.
William L. Porter, Acton, Ma.
Edward R. Pinkham, Jr., Fort Kent, Me.
Brian A. Murdock, New Canaan, Ct.
Thomas R. John, Lancaster, Pa.
James D. David, Ithaca, N.Y.
Harvey F. Christensen, Daly City, Ca.
Michael P. Branigan, Ithaca, N.Y.

RHO (24)

Douglas K. Deatrick, Chambersburg, Pa.
Scott W. Sautter, Fairfax, Va.
Christopher R. J. Cannon, Port Washington, N.Y.
Dermont M. Murphy, Garden City, N.Y.
Mark S. Law, Old Tappan, N.J.
Thomas B. Layman, Chambersburg, Pa.
Peter R. Kircher, New Canaan, Ct.
Thomas R. Vliase, Cherry Hill, N.J.
Malcolm Hall, Jr., Upper Montclair, N.J.
Thomas S. Goehring, Huntington, Pa.
Ronald H. Harris, McLean, Va.
John G. Green, II, Charlerio, Pa.
Thomas M. Berger, Tatamy, Pa.
Thomas J. Polidore, Delran, N.J.
Kirk M. Shouvin, New Canaan, Ct.
George C. Myers, Jr., Berwyn, Pa.
Andrew H. Dowling, Harrisburg, Pa.
Lee W. McClellan, Dover, N.J.
Neil S. McKinnon, Wayne, Pa.
Vincent R. DePalma, Rivervale, N.J.
James M. Milano, Delran, N.J.
Douglas B. Child, Avon, N.J.
John Melicharek, Jr., Union, N.J.
Bruce J. Legan, Short Hills, N.J.

SIGMA (2)

Dale E. Gregory, Binghamton, N.Y.
Craig R. Demry, Rock Island, Il.

OMEGA (1)

John F. McDaniel, Macon, Ga.

ALPHA-TAU (7)

William C. Slikin, Plymouth, Mi.
Randall B. Sharpe, Ann Arbor, Mi.
Jeffrey B. Cutler, Southfield, Mi.
Michael V. Daley, Shelton, Ct.
Orest O. Mykolenko, Warren, Mi.
Craig A. Zanot, Taylor, Mi.
Edward E. Lees, Kansas City, Mo.

ALPHA DELTA (18)

Kevin F. Slenker, Red Lion, Pa.
Charles B. Parker, Norristown, Pa.
David Scott Lohr, Camp Hill, Pa.
James E. Wolfe, Jr., Erie, Pa.
Steven W. Geise, Lock Haven, Pa.
Joseph E. Zuravleff, State College, Pa.
Robert H. Schnarrs, Allport, Pa.
Jonas E. Kauffman, III, Lewistown, Pa.
Richard M. Smearcheck, Nemaacolin, Pa.
Curtis W. Cranmer, Lock Haven, Pa.

Allan M. Brown, Dallas, Pa.
 John S. Bartges, Lock Haven, Pa.
 Richard Gigliotti, Pittsburgh, Pa.
 Thomas J. Thompson, Pittsburgh, Pa.
 Anthony J. Grosek, Plains, Pa.
 David J. Harris, Kingston, Pa.
 David L. Bernitt, State College, Pa.
 Eddy J. Spangler, Dover, Pa.

GAMMA DELTA (3)

Neil B. Sjulson, St. Hilaire, Mn.
 Michael C. Esters, Mason City, Ia.
 John E. Fortin, Jr., Minneapolis, Mn.

ETA DELTA (1)

Lance D. Caffray, Long Beach, Ca.

THETA DELTA (14)

Matthew D. Fitzgerald, Plantation, Fl.
 Michael L. Sawyer, Bradenton, Fl.
 Kirk T. Cunningham, Ft. Lauderdale, Fl.
 John T. Howell, West Palm Beach, Fl.
 James W. LaFarr, Clearwater, Fl.
 Jorge O. deMoya, Ft. Lauderdale, Fl.
 William Kocses, Naples, Fl.
 William E. Kushner, Hollywood, Fl.
 Merle A. Wood, III, Ft. Lauderdale, Fl.
 Terry M. Morse, Hollywood, Fl.
 Randall P. Little, II, Jacksonville, Fl.
 David J. Jasmund, West Palm Beach, Fl.
 Walter F. Flanagan, Jr., Merritt Island, Fl.
 Dean R. Shore, Hollywood, Fl.

RHO IOTA KAPPA (10)

Mark L. Axford, Plymouth, Ma.
 Robert T. Gallagher, Westerly, R.I.
 Mark A. Brady, West Kingston, R.I.
 Paul R. Cannon, Fairfield, Me.
 Raymond L. Martin, Providence, R.I.
 Frederick H. Hall, Jr., North Kingstown, R.I.
 Donald R. Peck, Barrington, R.I.
 Charles A. McLeod, Jr., Pelham, N.Y.
 Arthur A. PeFeo, North Bergen, N.J.
 Mark C. Manning, Chelmsford, Ma.

DELTA XI (30)

Donald J. Filip, Boardman, Oh.
 Hugh J. Casey, Hazlet, N.J.
 James E. Songer, II, Beckley, W. Va.
 Scott A. McCall, North Huntingdon, Pa.
 Joel T. Rupe, Lancaster, Oh.
 Jeffery J. Findle, North Huntingdon, Pa.
 James D. Lanner, Roselle, N.J.
 Douglas E. Phillips, Pittsburgh, Pa.
 Ronald Weber, Greensburg, Pa.
 Howard R. McGowan, Basking Ridge, N.J.
 Bradley J. Johnson, Warren, N.J.
 Todd A. Grove, Natrona Heights, Pa.
 Glenn J. Pietras, Suitland, Md.
 Christopher B. Comegys, London, England

Don G. Killmeyer, Jr., Coraopolis, Pa.
 Parke J. Wolfe, Charleston, W. Va.
 Karl E. Brand, Holmdel, N.J.
 Frazier P. Veirs, Rockville, Md.
 Todd J. Seligman, Parkersburg, W. Va.
 Philip B. Trout, Baltimore, Md.
 Duane J. Pitlock, Pittsburgh, Pa.
 Myles A. Bornstad, Englishtown, N.J.
 Richard A. Davison, Katonah, N.Y.
 Kevin S. Worthy, Lake Ronkonkoma, L.I., N.Y.
 Richard W. Hughes, Upper St. Clair, Pa.
 Malcolm J. Hood, Jr., Warren, N.J.
 Brian S. Murphy, Annandale, Va.
 Matthew M. Hughes, Ocean, N.J.
 Michael J. Wagener, Edgewater, Md.
 William R. Dobbins, Charleston, W. Va.

XI DELTA (3)

Timothy M. Bartish, Painesville, Oh.
 Peter A. Kirby, Orange, Ct.
 Robert S. Whitelaw, East Grand Rapids, Mi.

PI DELTA (9)

Richard C. Windon, Jane Lew, W. Va.
 James Gum, Camden, W. Va.
 James Benson, Weston, W. Va.
 John Boyd, Carrollton, Oh.
 Kenneth Neely, Mars, Pa.
 Lawrence Hunchuck, Uniontown, Pa.
 Jeffrey H. Farren, Belle, W. Va.
 Russell L. Walters, Glen Rock, N.J.
 Gary D. Thompson, Parkersburg, W. Va.

RHO DELTA (11)

Gregory A. Bernstein, Birmingham, Al.
 Paul C. Cross, Alexandria, Va.
 Robert M. Goodwin, Sarasota, Fl.
 Terrence P. Fallat, Kinnelon, N.J.
 Lonnie D. Scher, Colonia, N.J.
 Monte K. Birnbach, Baltimore, Md.
 Reynold F. Salmon, Rockaway, N.Y.
 Malcolm E. Page, Newington, Ct.
 Dominick A. Cannatella, Mt. Laurel, N.J.
 Brett N. Meals, Hunting Valley, Oh.
 John A. Burdakin, Atlanta, Ga.

CHI DELTA (10)

Michael R. Jackson, Atlanta, Ga.
 Michael T., Bemue, Austell, Ga.
 David R. Young, Decatur, Ga.
 Steven W. Clark, Stone Mountain, Ga.
 Daniel H. Reagan, Decatur, Ga.
 Dominique E. Larmet, Atlanta, Ga.
 William M. Atha, Covington, Ga.
 Edward A. Kuzava, Stone Mountain, Ga.
 Victor R. Donham, Atlanta, Ga.
 Michael M. Jones, Decatur, Ga.

BETA ZETA (1)

Steven L. Wangler, Maitland, Fl.

ZETA

John Nevin Rentz '38 of Bethesda, Md., died Nov. 6, 1976. Born Dec. 7, 1917, Rohrerstown, Pa. Initiated March 6, 1935.

ETA

Claude Gordy Scarbrough, Jr. '44 of Columbus, Ga., died Nov. 26, 1975. Born July 15, 1923, Columbus, Ga. Initiated April 1, 1941.
Joseph Jacques Taylor '23 of Atlanta, Ga., died June 19, 1976. Born Dec. 13, 1901, Atlanta, Ga. Initiated Sept. 20, 1919.

THETA

Roger Vail Baylis '15 of Rhinebeck, N.Y., died Sept. 5, 1976. Born Nov. 15, 1893, Brooklyn, N.Y. Initiated Sept. 28, 1911. Affiliated, Omicron 1914.

George Hoag Gifford '06 of Syosset, N.Y., died Sept. 9, 1976. Born Aug. 27, 1884, South Easton, N.Y. Initiated Oct. 3, 1902.

John Thatcher Morris '18 of Babylon, L.I., N.Y., died July 15, 1976. Born July 13, 1895, Troy, N.Y. Initiated Oct. 9, 1915.

Charles William Swift, Jr. '35 of Elmira, N.Y., died Oct. 11, 1975. Born April 15, 1911, Elmira, N.Y. Initiated Dec. 18, 1931.

IOTA

William Andrew Beyer '33 of Normal, Ill., died May 27, 1970. Born Jan. 12, 1912, Normal, Ill. Initiated May 24, 1930.

KAPPA

George Harrison Beach '24 of Dallas, Texas, died July 30, 1976. Born July 27, 1901, Whitehall, Wis. Initiated Nov. 5, 1922.

Edward Louis Deuss '19 of Great Falls, Va., died July 23, 1976. Born July 14, 1897, Kansas City, Mo. Initiated June 2, 1917.

Ernest Reynold Feidler '34 of Arlington Va., died Sept. 4, 1976. Born April 15, 1910, Superior, Wis. Initiated March 26, 1932.

Karl Paul Landmann '29 of Wauwatosa, Wis., died Oct. 4, 1975. Born Dec. 3, 1907, Washburn, N. D. Initiated May 21, 1928.

Robert Leonard Reynolds '24 of Madison, Wis., deceased, date unknown. Born Jan. 17, 1902, Janesville, Wis. Initiated Dec. 4, 1921.

LAMBDA

Charles LeRoy Butler '12 of Oakland, Ca., died Aug. 11, 1976. Born April 10, 1889, Oakland, Ca. Initiated Aug. 19, 1908.

Robert Nevin Dallam '43 of Alexandria, Va., died in Oct. 1976. Born July 9, 1922, Oakland, Ca. Initiated Sept. 27, 1942.

Herbert Daniel Haworth, Jr. '53 of Piedmont, Ca., died Nov. 30, 1976. Born July 3, 1931, Hollywood, Ca. Initiated Feb. 26, 1950.

George Henderson Stiles '30 of San Francisco, Ca., died Feb. 12, 1975. Born June 1, 1907, San Francisco, Ca. Initiated Jan. 29, 1927.

MU

Charles Parker Herbell '22 of Southbury, Ct., died Oct. 15, 1976. Born Aug. 11, 1900, New York, N.Y. Initiated Oct. 14, 1918.

NU

Henry Leon Walker '32 of Taylor, La., died May 31, 1976. Born Sept. 26, 1909, Dubberly, La. Initiated Jan. 30, 1932.

XI

Henry Halsey Miller '11 of Buffalo, N.Y., died April 15, 1976. Born Jan. 2, 1888, Ithaca, N.Y. Initiated Oct. 12, 1907.

OMICRON

Richard Eugene Fuller '18 of Seattle, Wash., died Dec. 10, 1976. Born June 1, 1897, New York, N.Y. Initiated March 23, 1916.

Fellows Thompson '18 of Bryn Mawr, Pa., died July 26, 1976. Born Jan. 9, 1895, New York, N.Y. Initiated March 23, 1916.

RHO

John Hilliard Lehr '50 of Easton, Pa., died Oct. 4, 1976. Born June 7, 1926, Easton, Pa. Initiated Feb. 15, 1947.

Charles Christian McDowell '33 of Willingsboro, N.J., died Aug. 6, 1976. Born June 2, 1910, Millvale, Pa. Initiated March 27, 1930.

SIGMA

Donald Sheldon Watrous, Jr. '27 of Holly Grove, Ar., died Nov. 29, 1975. Born April 6, 1906, Lansing, Mich. Initiated March 1, 1924.

Stanley A. Woleben '26 of Chicago, Ill., died Aug. 7, 1976. Born July 16, 1904, Marengo, Ill. Initiated Feb. 24, 1923.

TAU

Sterling Paine McDonald, III '52 of Birmingham, Ala., died in Nov. 1976. Born March 20, 1929, Sylacauga, Al. Initiated Feb. 22, 1947.

Ernest Hopkins Planck, Jr. '33 of Daphne, Ala., died July 7, 1976. Born Oct. 26, 1910, Mobile, Ala. Initiated Feb. 8, 1930.

PHI

Robert Avery Middleton '17 of Colorado Springs, Co., deceased date unknown. Born Nov. 1, 1894, Utica, N.Y. Initiated Oct. 29, 1913.

Robert Andrew Walker '28 of Columbus, N.C., deceased, date unknown. Born Sept. 22, 1906, Philadelphia, Pa. Initiated Nov. 13, 1924.

CHI (Dartmouth)

Clarence Eugene Allen '10 of Camden, Maine, died in March, 1974. Born Feb. 8, 1887, Fitchburg, Mass. Initiated Dec. 9, 1907.

Donald Glenn Augur '12 of Valley Cottage, N.Y., deceased, date unknown. Born May 28, 1889, Brooklyn, N.Y. Initiated Dec. 10, 1908.

Fred William Baker '03 of Lancaster, N.H., deceased, date unknown. Born July 24, 1881, Lancaster, N. H. Initiated May 2, 1902. CHARTER MEMBER.

Laurence Edwards Eastman '19 of Cape Elizabeth, Maine, died Nov. 15, 1976. Born Oct. 4, 1895, Portland, Maine. Initiated March 3, 1916.

Everett Walton Goodhoe '00 of Hanover, N.H., deceased date unknown. Born March 17, 1878, West Barnstable, Mass. Initiated March 4, 1903.

Roger Loring Howland '18 of Rhinebeck, N.Y., deceased, date unknown. Born Nov. 16, 1896, New Bedford, Mass. Initiated March 15, 1915.

Walter J. Moreton McKibben '30 of Worthington, Oh., died April 1975. Born Oct. 17, 1907, Columbus, Oh. Initiated Nov. 16, 1927.

Eugene Forrest McQuesten '16 of Nashua, N. H., died in 1969. Born in 1892 (no place of birth given). Initiated Feb. 28, 1913.

Henry Edmund Melaney '09 of Gainesville, Fla., died in fall, 1970. Born Sept. 3, 1887, Paterson, N. J. Initiated Nov. 27, 1905.

John Lovell Pickells, Jr. '65 of Harwich, Mass., deceased, date unknown. Born July 6, 1942, Webster, Mass. Initiated Jan. 6, 1963.

John Anderson Fitz Randolph '13 of Brooklyn, N. Y., deceased, date unknown. Born April 30, 1892, Brooklyn, N. Y. Initiated Dec. 9, 1909.

Harold Herbert Sawyer '49 of Rheem, Ca., deceased, date unknown. Born June 9, 1926, Steuben, Maine, Initiated Nov. 23, 1946.

George Jacob Sell, IV '41 of Maplewood, N. J., died Jan. 9, 1976. Born Oct. 14, 1919, Maplewood, N. J. Initiated Dec. 1, 1938.

Charles Addison Wing '07 of Cambridge, Mass., died Aug. 20, 1970. Born July 16, 1882, Montpelier, Vt. Initiated Nov. 21, 1903.

PSI

Frank John French '32 of Pine Plains, N. Y., deceased, date unknown. Born Nov. 27, 1906, New York, N. Y. Initiated Oct. 8, 1929.

Walter Stockley March '21 of Spokane, Wash., died Dec. 23, 1976. Born Dec. 18, 1897, Cynwyd, Pa. Initiated Nov. 16, 1915.

OMEGA

Robert Edward Shivers, Jr. '55 of Atlanta, Ga., died Dec. 19, 1969. Born April 10, 1933, Atlanta, Ga. Initiated Feb. 24, 1952.

ALPHA-ALPHA

Mark Bryan Kaser '79 of Mentor, Ohio, died May 29, 1976. Born April 29, 1957, Big Spring, Texas. Initiated Dec. 3, 1975.

ALPHA-TAU

Robert Thomas Burnett Hall '23 of Birmingham, Mich., died in 1976. Born July 18, 1896, Espanola, New Mexico. Initiated March 4, 1922.

Donald Alsie McIntyre '22 of Birmingham, Mich., died in August 1976. Born Aug. 25, 1899, Yale, Mich. Initiated Sept. 24, 1921.

William L. Robinson '43 of Birmingham, Mich., died Sept. 12, 1976. Born Dec. 10, 1920 Birmingham, Mich. Initiated March 8, 1941.

Stuart Hessel Yntema '48 of Saginaw, Mich., deceased, date unknown. Born July 1, 1926, Saginaw, Mich. Initiated March 16, 1947.

ALPHA-CHI

Thomas Harlowe Blakely '28 of Painesville, Ohio, died Aug. 14, 1976. Born Sept. 14, 1906, Painesville, Ohio. Initiated Feb. 23, 1925.

Jess LeRoy Bordner '31 of Dearborn, Mich., died July 22, 1976. Born Aug. 22, 1908, Canton, Ohio. Initiated June 9, 1928.

ALPHA DELTA

William Mawheney Kerr, Jr. '31 of Hilton Head Island, S.C., died May 1, 1976. Born Oct. 15, 1906, Philadelphia, Pa. Initiated Feb. 24, 1928.

John A. Palmer '12 of Lancaster, Pa., died Dec. 8, 1976. Born May 22, 1889, Bart, Pa. Initiated May 10, 1924.

GAMMA DELTA

Robert Clarence Kellett '31 of Oshkosh, Wis., deceased, date unknown. Born March 5, 1907, St. Paul, Mn. Initiated Dec. 8, 1928.

Myrle John McKeon '23 of Rush City, Mn., deceased, date unknown. Born June 20, 1899, Rush City, Mn. Initiated April 21, 1928.

John Frithiof Noble '20 of Minneapolis, Mn., deceased, date unknown. Born Sept. 1, 1898, Minneapolis, Mn. Initiated April 21, 1928.

DELTA DELTA

Jack Patrick Fleischmann '39 of Hidden Hills, Calif., deceased, date unknown. Born Jan. 3, 1918, Baltimore, Md. Initiated June 22, 1936.

THETA DELTA

Charles Marsh '52 of Hollywood, Fl., was killed in an auto accident, Sept. of 1955. Born May 6, 1930, Detroit, Mi. Initiated Oct. 20, 1948.

ALPHA THETA CHI

Clarence Keith Ray '33 of Ladue, Mo., died July 17, 1976. Born Dec. 13, 1905, Red Oak, Iowa. Initiated Nov. 26, 1932.

ALPHA-PI (Vanderbilt)

Kenneth Lee Overley '37 of Louisville, Ky., deceased, date unknown. Born Oct. 11, 1914, Barbourville, Ky. Initiated April 19, 1937.

MARRIAGES

EPSILON

Daniel C. Bartges, Jr. '70 to Janet Gibson, Aug. 23, 1975.

ETA

John M. Hanger '72 to Holly Ann Marks, Dec. 18, 1976.

MU

Stan J. Werchinski, Jr. '76 will be married to Judy Walburn, March 26, 1977.

ALPHA-ALPHA

I. Manning Huske '64 to Hanna Lee Davis, June 26, 1976.

ALPHA DELTA

Jose F. Derr '73 to Kathy Keyack, April 10, 1976.

Richard W. DiBella '73 to Terri L. Hamilton, July 19, 1975.

ALPHA THETA CHI

Max E. Jordan '76 to Cindy Zastrow, Aug. 14, 1976. Lincoln, Nb.

Matthew C. Metcalf '77 to Paula Haeder, July 11, 1976, Omaha, Nb.

Mark S. Saitta '76 to Cynthia A. Pattee, Aug. 21, 1976, Omaha, Nb.

Matthew C. Stebbins '74 to Lois Wahl, July 24, 1976, Eustis, Nb.

OMICRON DELTA

Kenneth Switzer, Jr. '70 to Susan Lee Eveckovich, July 10, 1976.

RHO DELTA

G. E. "Bubba" Batey '74 to Carol Jo Kimberly, Dec. 18, 1976.

David M. Ruchin '72 to Cindy Frank, Nov. 14, 1976, Spartanburg, S. C.

CHAPTER ETERNAL

PHI

George Dallas Clark '27 (GRAND BETA 1949-1952), Tyron, N.C., died Dec. 21, 1976. Born June 2, 1903, Chicago, Il. Initiated Nov. 1, 1923.

☆☆

ALPHA

Fred Fleet Gignilliat '23 of Ft. Worth, Texas, died Dec. 11, 1974, Born March 4, 1902, Culver, In. Initiated Jan. 26, 1920.

Allen Hollis Peer '50 of Woodstock, Va., died Oct. 25, 1974. Born Nov. 17, 1922, Woodstock, Va. Initiated Dec. 15, 1948.

Bland Clarke Wallace '31 of Richmond, Va., died Aug. 14, 1976. Born Dec. 28, 1908, Richmond, Va. Initiated Oct. 19, 1927.

BETA

Benjamin Abbott Dickson '22 of Devon, Pa., died Feb. 14, 1976, Born Dec. 18, 1897, Springfield, Mass. Initiated Nov. 1, 1920.

Samuel Joseph Tankoos, Jr. '43 of New York, N.Y., died Sept. 20, 1976. Born March 11, 1921, Brooklyn, N.Y. Initiated Aug. 28, 1941.

GAMMA

Welch Oliver Jordan '33 of Greensboro, N.C., died Sept. 16, 1976. Born Feb. 28, 1912,

Atlanta, Ga. Initiated Jan. 14, 1930. Affiliated Alpha-Alpha, Sept. 18, 1934.

Frank Hill Tigner '17 of Greenville, Ga., died Aug. 17, 1976. Born Aug. 1, 1894, Greenville, Ga. Initiated in 1913.

DELTA

Frederick William Hoth, '25 of Pawlet, Vt., deceased, date unknown. Born April 5, 1902, Hackensack, N.J. Initiated Oct. 18, 1921.

Milton Shortledge Ley '04 of Berkeley Heights, N.J., deceased, date unknown. Born May 7, 1882, Sidney, Ohio. Initiated Sept. 18, 1900.

Eugene Francis Rockafeller '16 of Belmar, N.J., deceased, date unknown.

Georgia Chi Phis Make Tourney Plans

Piedmont Club to Be Scene of Annual Party

The Piedmont Driving Club has again been selected for the Annual Alumni Party March 19, 1977. The event will be held on Saturday night beginning at 8:30 P.M. in order to attract more attendance from around the state. The usual format will be followed including a live band, complimentary hors d'oeuvres, and complimentary drink tickets. Bonus drink tickets will go to members who have paid their dues in advance of the night of the party.

The 12th Annual Southeastern Basketball Tournament has been switched to March 5 & 6, 1977 at the Oglethorpe University Field House. A schedule conflict forced officials of the association to rearrange the date from the initial plans of late February.

Some rule changes are expected this year which should tend to minimize past inequities in scheduling games. Last year, however, did prove to be perhaps the tournament's most outstanding year for close games. One triple overtime and several double overtime games highlighted an event which saw few runaway contests. Twenty-two chapters have been mailed the initial notice.

The association's annual business meeting was held October 28, 1976 at the Capital City Club where financial reports and review of the past year's events were aired. Following a general status report on condition of the Georgia chapters, the foregoing list of officers were elected:

President, Jim Wimberly, Eta '65; First Vice-President, John Godfrey, Omega '64; Vice-President, Robert Hogg, III, Eta '70 Vice-President, Kem Morgan, Gamma '71; Secretary, Richard DeMayo, Gamma '71; Treasurer, Nedom Haley, Omega '65.

Mailings of the annual party with dues notices are expected in the near future. Annual \$15.00 dues to the Georgia Chi Phi Association can be mailed to: Nedom A. Haley, 1500 Tower Place, 3340 Peachtree Road, N.E., Atlanta, Georgia 30326.

More on Voluntary Alumni Dues 1975-76

The general article which appeared in the September 1976 issue could use some further elaboration. It should first be emphasized that the entire process is handled by your National Office without help of professional fund raising consultants. The dramatic increase in support for 1975-76 was therefore particularly rewarding in that no additional costs were incurred to achieve the increase. Chi Phi is truly one of the outstanding national fraternities when comparing amount of support relative to total cost of solicitation.

The fairest measure of alumni loyalty is a percentage comparison of contributors to the size of the known mailing list of that chapter. For purposes of calculating chapter alumni loyalty, a tally was made of alumni members known to have contributed to either the national solicitation, the local chapter house association or the area association. Individuals who supported more than one association were not counted twice which could have produced a different set of results. The Council believes that the comparisons listed below indicate that large numbers of Chi Phis take pride in their fraternity.

Top Ten Comparison By Percentages

Sigma Delta—University of California at Davis33%
Alpha Delta—Pennsylvania State University27%

Mu—Stevens Institute Technology .25%
Eta Delta—University of Southern California23%
Xi—Cornell University22%
Iota Delta—Indiana University22%
Iota—Ohio State University19%
Psi—Lehigh University19%
Eta—University of Georgia18%
Kappa—University of Wisconsin ...18%

Chapters with the largest body of living alumni have the greatest advantage using only the measure of the number of contributors. Nonetheless, a recognition of these alumni groups is entirely warranted in that their support is crucial to our existence by the standards that Chi Phi deserves:

Top Ten Comparison By Number of Contributors

Alpha Delta—Pennsylvania State University183
Eta—University of Georgia162
Xi—Cornell161
Gamma—Emory University155
Omega—Georgia Institute of Technology138
Eta Delta—University of Southern California117
Iota—Ohio State University115
Alpha-Tau—University of Michigan .114
Mu—Stevens Institute Technology .112
Kappa—University of Wisconsin97

The story is not complete without some recognition being given to alumni of our fifteen inactive chapters which still have living alumni. The Council is

endeavoring to strengthen our national staff and financial credibility to devote more attention to the task of recolonization of as many of those chapters as possible.

Inactive Chapters Comparison by Percentage

Sigma-Wofford—Wofford College .29%
Alpha-Pi—Vanderbilt University ...15%
Alpha-Pi—Iowa State14%
Beta Delta—University of Washington12%
Tau Delta—University of Oregon .11%

Inactive Chapters Comparison by Contributors

Nu—University of Texas47
Omicron—Yale34
Chi—Dartmouth College25
Beta Delta—University of Washington21
Delta-Delta—UCLA14

Formal apologies are due officers and members of the Xi Alumni Association for excluding contributors of their association who were not included on our national list. Forty-one members listed in the roll of supporters (September 1976 issue) also support the Xi roll call. These names will not be repeated. It should also be noted that eight active members of the chapter contributed to Xi's 1976 campaign. The following is a list of those supporters who did not appear in the last issue.

Xi Contributors Not Included in September Tabulation

Ansley, Dr. James R. '70	Cutting, R. Davis '48	Lapann, James L. '75	Snyder, SP4 Eric K. '69
Arkema, Daniel A. '69	Davis, Burton S. '31	Lawson, Russell L. '31	Spratt, Rich '76
Arnold, John S. '74	Delaplaine, Jr. Frank, III '35	Lewin, Keith F. '74	Sterling, Thomas L., Jr. '63
Asch, Kenneth G. '69	Dow, Harold G. '74	Marple, William E. '25	Street, Gordon P. '25
Atwood, Rawson '34	Foote, Douglas G. '43	Martin, Philip E. '72	Stroud, William L. '38
Ballantine, Herbert W. '17	Frey, Mark E. '72	Miles, Louis W. '62	Studley, Jerr '76
Bennett, Dr. Hugh N. '43	Gooding, Mrs. Donald R.	Minty, John E. '21	Swan, Charles, III '36
Bennett, James E. III '65	Gordon, Britton L. '33	Murray, Neil V. '70	Thompson, John V. '15
Beve, Carl-Eric '38	Gordon, George H. '50	Neal, William D. '71	Tourtelot, Edward M., Jr. '29
Bickel, William D. '21	Gouinlock, James S. '56	Patrick, Robert E. '32	Tower, Lewis K. G. '20
Bisseu, Wayne '76	Hibbert, David A. '74	Penny, Willard B. '33	Tracy, Charles S. '33
Bolin, George W., Jr. '67	Hiltebrant, Stephen D., Jr. '36	Pfeifer, Edmund '38	Tyler, Robert D., Jr. '62
Brayton, Charles L. '23	Horton, John H. '72	Preston, J. Bradford '73	Vanderbeck, George H. '11, '31
Brown, Randall B. '68	Janaitis, Timothy W. '67	Puchner, Mrs. Margaret K.	Vincelette, Robert B. '42
Brown, William R. '71	Johnson, Kenneth Jr. '44	Riley, Dick '78	Vipond, Stittler A. '40
Brull, Harold P. '70	Jung, Harold E. '53	Rogers, Glenn B. '62	Wastbom, Andrew '78
Busch, William H. '48	Kinchley, Henry A. '19	Rothenstein, Donald S. '71	Whitefleet, Robert J. '64
Casey, Frank M. '54	Kravitt, Dave '76	Schreiner, G. John, Jr. '44	Wirtgreffe, Steve '76
Caves, Joel L. '62	Lamb, Col. Gilbert B. '27	Siefke, Frederick V. '48	Wilder, George W. '24
Clark, Dr. Orlo H. '63	Langman, Henry A., Jr. '38	Siewert, Robert M. '62	Wilson, David K. '41
Collyer, John L. '17		Smith, Charles C., Jr. '64	Wolley, Charles S. '76
Cox, David W. '74		Smith, David H. '75	Woodruff, Alson E. '32
Cox, James F. '69			



Richard C. Armstrong

Armstrong Named To Head Western Mortgage Corp's Southeast Operations

Richard C. Armstrong, Alpha-Alpha '57, has been named Regional Vice President in charge of operations for Atlanta's Western Mortgage Corporation in the Southeastern United States.

Western, the third largest mortgage banking company in the nation, has a major, territorial facility in Atlanta and a mortgage servicing portfolio in four Southeastern states. It is a wholly owned subsidiary of Unionamerica, Inc. (NYSE), a Los Angeles-based financial services firm with commercial insurance and mortgage banking operations throughout the United States and in three foreign countries.

According to firm president, Fred Morrison, Richard will guide a planned growth program in the Southeast. Mr. Morrison further states, "We're in an excellent position to launch such a program because we're the second largest mortgage banker in Atlanta with a servicing portfolio of \$350 million".

During his 17-year career in the mortgage and real estate fields, Armstrong has held key management positions in five leading mortgage banking companies. Prior to joining Western, he was a mortgage consultant since 1973 for Chase Manhattan Realty Capital Corporation, covering most of the Southeastern states out of Atlanta. Previously, he was senior vice president and manager of the Income Loan Department for Tharpe & Brooks, Inc.

A resident of Marietta, Ga., Armstrong has lived and worked in the Atlanta area since 1967 and is a member of numerous local civic and profes-

MIAMI BEACH



1977 CHI PHI CONGRESS
Krannert Leadership Seminar
August 17-21, 1977—Americana Hotel
Bal Harbour
Miami Beach, Florida

SECOND CLASS POSTAGE PAID AT KISSIMMEE, FLORIDA 32741

THE CHAKETT CHI PHI

VOLUME 61, NUMBER 4 DECEMBER, 1976

POSTMASTER: Please send Form 3579 for undeliverable copies to: Chi Phi Fraternity, 3330 Peachtree Road, N.E., Suite 550, Atlanta Georgia 30326

DADE CO ZOO—JAI ALAI—EVERGLADES NATIONAL PARK—GOLF—FISHING—SHOPPING—TENNIS

COLLINS PARK ASTRONOMY—BISCAYNE BAY—CORAL CASTLE—FAIRCHILD TROPICAL GARDENS—

GUSMAN PHI HARMONIC HALL—ANIMAL JUNGLE—SEAQUARIUM