

# THE CHI PHI chakett

CHI PHI  
*Authentic*

SPRING  
2010

EPSILON DELTA SOPHOMORES  
KEEGAN WARRINGTON AND  
TATE KOENIG COMPLETE A  
10,000-MILE, 16 COUNTRY  
AFRICAN ADVENTURE TO RAISE  
MONEY AND AWARENESS.



## IN THIS ISSUE

- Rho Iota Kappa Charters
- Expansion at Eastern Illinois University
- Loos, Cook and Others Make Major Gifts
- Chi Phi Housing & Congress
- Chi Phi is Changing Attitudes About Alcohol, Hazing and Sexual Assault

# SCHOLARSHIP WINNER MAKES HIS OWN IMPACT ON CHI PHI

As a chapter, campus and community leader and volunteer, **Josh Gardner, Alpha Theta Chi 2010** works diligently to impact the world around him. An industrial engineering major at the University of Nebraska-Lincoln, Gardner serves as his chapter's Beta and as a volunteer ambassador for the College of Engineering. He also competes in intramurals, leads a Bible study and volunteers for Relay for Life.

In 2008, Gardner made his impact thousands of miles away. Traveling to San Cristobal, Venezuela, he served on a research team studying leadership theories and organizational behavior at the Universidad Nacional Experimental de Tachira. During his three month stay in Venezuela, Gardner conducted research, built friendships and learned Spanish. The research he worked on was used to measure leadership effectiveness in local industry, in hopes of helping local business leaders improve their management skills.



*Josh Gardner, Alpha Theta Chi 2010, and his research team measured local business leadership effectiveness in San Cristobal, Venezuela.*

has given me the opportunity to be included in a community of men that I would never have known if I had not joined. This opportunity has given me joy, anger, laughs, and, most importantly, a group of people I call my brothers who I will cherish and love throughout my life. As we sing each week, I am bound to these men eternally, fraternally.

Thanks to this scholarship, Chi Phi also gave me the opportunity to pursue my dream of becoming an engineer - while still being active on campus, in my community and beyond. I am forever grateful for my Chi Phi experience."

It was this gratitude that led Gardner to support the Trust by joining the Men of 1824 last year - before scholarship winners were announced.

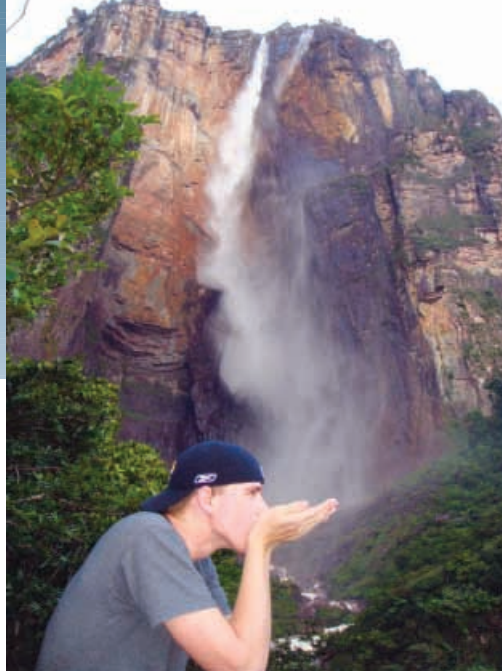
Asked why he contributed to the Chi Phi Educational Trust, Gardner explained, "I give to Chi Phi because the Fraternity has given so much to me. I have been blessed by the amount of gifts I have received from Chi Phi through an academic scholarship and my Chi Phi experience. It only seems right for me to pass just a little bit of my wealth on to another deserving individual, and who better to receive this money but a Chi Phi?"



The Men of 1824 is an exclusive group of undergraduate brothers and recent alumni who share a long-term vision and commitment to the Fraternity. Membership is reserved for undergraduates and alumni who have graduated during the last five years. Through their gifts of \$25 or more, these undergraduate and young alumni leaders make a statement to the world that they believe in the future of Chi Phi and are willing to contribute to make that future bright. To make a contribution and join the Men of 1824, visit [www.chiphi.org](http://www.chiphi.org).

*To participate on the Men of 1824 Advisory Council, contact:*

Laura Hamilton  
Director of Development  
(800) 849-1824  
[hamilton@chiphi.org](mailto:hamilton@chiphi.org)



*Gardner "drinking" from Angel Falls in Venezuela, the highest waterfall in the world, while on a break from his research work.*

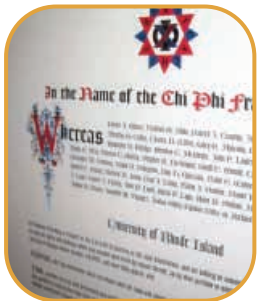
# THE CHI PHI **chakett**

First published in 1868



SPRING 2010 Issue

## CONTENTS:



Advancing the Chi Phi Strategic Plan .....	4
Chi Phi Students Racing through Africa for a Cause .....	5
Around Chi Phi... Chapters, Alumni Associations & Alumni Clubs .....	9
Celebrating 150 Years of Chi Phi at the University of Virginia .....	11
25 Years of Ghosts, Goblins and Haunted Houses at Ohio Wesleyan .....	14
Rho Iota Kappa Charters .....	16
The First Steps to Resurrecting a Dormant Chi Phi Chapter .....	23
Chi Phi Expands to Eastern Illinois University .....	24
Chi Phi is Changing Attitudes about Alcohol, Hazing and Sexual Assault .....	25
New Field Executives to Visit 40 Chapters this Spring .....	28
Top Annual Donors Driving Excellence .....	29
An Anonymous \$100,000 Gift .....	30
Jack Cook Leaves \$136,334 to Alpha Chapter .....	31
MacLean Legacy Society Grows .....	32
Former Executive Director Announces Leadership Gift to Chi Phi & Theta Delta .....	33
Scholarships Available to All Chi Phi Students .....	35
Chi Phi's Convene Across the Country .....	36
Collegiate Housing & Congress: What Every Chi Phi Needs to Know .....	37
Reconnect with Chi Phi .....	39
Chi Phi to Converge on Boston for 145th Congress .....	40
Alumni News & Notes .....	41
Chapter Eternal .....	43

## CONTRIBUTORS:

Michael Azarian .....Psi Delta 1997, **Editor**  
 Jack P. "Jay" Cook, Jr.  
 Connor Deeks.....Epsilon Delta 2012  
 Stephen Dominy .....Alpha Tau Omega Fraternity  
 Kim Godwin.....Delta Zeta Sorority, **Managing Editor**  
 Laura Hamilton .....OmegaFi

Paul Janowicz.....Alpha-Chi 2008  
 Fred Maglione .....OmegaFi  
 Nancy Cook Motter  
 Senour Reed.....Eta 1979  
 Jim Soderquist .....Alpha 1967  
 Charlie Wilbur .....Rho Iota Kappa 2011  
 Jim Wimberly.....Eta 1965

### Chi Phi Fraternity Chi Phi Educational Trust

William M. Byrd Chi Phi National Headquarters  
 1160 Satellite Blvd.  
 Suwanee, GA 30024  
 (404) 231-1824  
 (404) 237-5090 fax  
[www.chiphi.org](http://www.chiphi.org)



Cover Photography: Luke Brossette

2009 – 2011

# GRAND COUNCIL

**James P. Soderquist**, Alpha 1967  
*Grand Alpha*  
Charlottesville, Virginia

**Ron Frank**, Nu Delta 1983,  
Iota Zeta 1989, Delta Zeta 2000  
*Grand Beta*  
Tampa, Florida

**Frank Uryasz**, Alpha Theta Chi 1983  
*Grand Gamma*  
Kansas City, Missouri

**Eric Pittman**, Alpha Zeta 1993  
*Grand Delta*  
Atlanta, Georgia

**Senour Reed**, Eta 1979  
*Grand Epsilon*  
Atlanta, Georgia

**Steven Hopkins**, Nu 1999  
*Grand Zeta*  
Dallas, Texas

**George MacDonald**,  
Kappa Delta 1971, Iota Zeta 1989  
*Grand Eta*  
Arlington, Virginia

**Nick Abrahams**, Nu Delta 2010  
*Grand Theta*  
Tallahassee, Florida

**Charlie Wilber**, Rho Iota Kappa 2011  
*Grand Iota*  
Kingston, Rhode Island

**Glenn Johnson**, Mu Theta 2004  
*Heritage and Traditions Counselor*  
Lake Jackson, Texas

**Raymond Carnley**, Delta Pi 2000  
*Scholarship Counselor*  
Durham, North Carolina

**Michael Paul Orta**,  
Phi Lambda Theta 2006  
*Member at Large*  
Williamsburg, Virginia

**M. Casey Woolf**, Phi Delta 2010  
*Member at Large*  
Knoxville, Tennessee

**Michael Azarian**, Psi Delta 1997  
*Executive Director & Editor  
of the Chakett*  
Atlanta, Georgia

# CHANGING LIVES AND MAKING A DIFFERENCE



Dr. Jim Soderquist, Grand Alpha

Since taking office in July, I have had the opportunity and pleasure of meeting hundreds of our brothers as I travel throughout this country. Our members have excelled in virtually every walk of life, and I am exceedingly proud of the men who wear our Badge.

Despite the challenges and uncertainty facing our nation, I feel confident about our future. The men who join our Fraternity are looking to make a difference. Undeniably, they wish to experience the social side of college life, but I have also learned that they deeply desire to associate with like-minded young men, who like themselves, cherish the values of truth, honor and personal integrity.

In this issue of the Chakett, you are going to be introduced to some truly exceptional Chi Phi undergraduates.... like Josh Gardner, the men of Rho Iota Kappa, our newest colony at Eastern Illinois and many more. Not all of our brothers can create charities, raise awareness and race through Western Africa like Keegan Warrington and Tate Koenig, but every Chi Phi Brother can make a difference.

Brothers, we can all make a difference in someone's life. As Chi Phis, we have the opportunity to make a positive difference in the lives of our student members - in their own lives and the lives they will touch.

We also need to remember that Chi Phi is a personal, social experience. Walter Cronkite, Nu 1937 stated this very directly in the speech we published in the last issue of the Chakett.

Chi Phi changes the lives of our members. That's why we are here.

I am a better man because of my Chi Phi experience. If you are reading this letter, then I am certain that Chi Phi has had a profound impact on your life as well. I have no doubt that you have regularly shared weddings, vacations, births and numerous other important events with your chapter Brothers. How many Chi Phi men are in your rolodex or friends with you on Facebook?

Chi Phi changes lives in profound ways.

Having made that observation, I believe Chi Phi is finally coming to grips with this reality. We are an exceptional organization with an important story to tell. We make the lives of young men better. These young men make this nation and world better. That is precisely the reason I am so optimistic about our future.

As you'll also see in this issue, many of our alumni are beginning to reach this same conclusion. They are starting to invest significantly in our Fraternity. Since taking office nine months ago, Chi Phi has raised more than \$2 million in pledges, outright and planned gifts. And, like Brothers Koenig and Warrington, we're just beginning our journey.

I hope you will follow - even join us - as we continue to tell our story, advance our Fraternity and change lives.

In the Bonds,

**Dr. Jim Soderquist**, Alpha 1967  
*Grand Alpha*

# ADVANCING THE CHI PHI STRATEGIC PLAN

Designed around ten key initiatives, the Strategic Plan of the Fraternity is designed to help Chapters, Alumni Associations, Alumni Clubs, volunteers and staff move in one cohesive direction. Outlined below is an abbreviated list of the Strategic Plan Basic Initiatives:

## 1. CHAPTER HEALTH:

Chi Phi will create a standard by which we can assess the state/condition of our existing chapters and then rate them according to these standards.

## 2. FINANCES:

Chi Phi must improve accounts receivable, coordinate needs with resources, mitigate cash flow problems and raise more money.

## 3. CHAPTER GROWTH/EXPANSION:

Chi Phi must increase undergraduate membership by establishing an ideal chapter size for each chapter based on the Greek community at its institution. We will recolonize at least one dormant chapter per year with an established and motivated alumni association. We will establish at least two to three new colonies per year where the requisite infrastructure is in place.

## 4. GOVERNANCE AND STRUCTURE:

We must identify the optimal staffing model, develop a national reporting program, develop a new member education program, a chapter finance program and annually measure and assess staff performance.

## 5. RISK MANAGEMENT:

Chi Phi must provide adequate coverage and risk prevention measures to prevent and/or mitigate degradation of our equity or brand by maintaining an appropriate level of liability insurance to protect the assets of the Fraternity.

## 6. HERITAGE PRESERVATION:

Chi Phi must develop a plan to catalogue, preserve and display historical materials of the Fraternity and for completing the next edition of the Chronicles.

## 7. COMMUNICATION:

The Fraternity must communicate events, opportunities, successes and other relevant information in an effective and timely manner.

## 8. PROGRAMMING:

Chi Phi will develop effective programming and funding strategies to support the mission of the Fraternity.

## 9. ALUMNI DEVELOPMENT:

Chi Phi must encourage and promote greater alumni involvement in all levels of the Fraternity by identifying and establishing a lead alumnus and Chapter Advisor at every Chapter and Colony, establishing Alumni Associations for every Chapter, expanding Alumni Clubs, seeking broader representation within our National leadership boards and increasing the number of alumni donors.

## 10. LEADERSHIP DEVELOPMENT:

It is incumbent upon Chi Phi to identify and utilize training opportunities/programs that will build skills and knowledge for more effective leadership by our members.

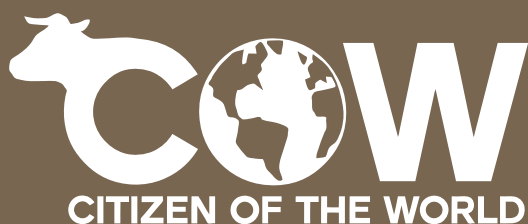
# CHI PHI STUDENTS RACING THROUGH AFRICA FOR A CAUSE

On December 13, 2009, **Keegan Warrington, Epsilon Delta 2012**, along with fellow adventurer **Tate Koenig, Epsilon Delta 2012**, set out on a quest to become Africa Rally Champions by driving more than 10,000 miles across 16 countries and two continents from London, England through most of Western Africa to Kribi, Cameroon. They safely and successfully reached the finish line on February 18, 2010, and returned to Corvallis, Oregon on February 25, 2010.

The two Oregon State sophomores participated in the Africa Rally, a race developed by The Adventurists, a company that pairs adventure travel with charitable fundraising. The Chi Phi brothers represented just one of 87 teams and only one of four from the United States.

While Warrington and Koenig raced through Africa, they received logistical and media support from other Epsilon Delta brothers. The entire chapter participated and provided support.

The group travelled to raise awareness for a new charity they started, Citizen of the World, or "COW."



Citizen of the World is a student organized, nonprofit corporation focused on increasing global awareness and social responsibility among students. Their objective is to send herds of students around the globe to volunteer and promote proactive humanitarian and sustainability focused projects.

"We believe that education, volunteering and travel build globally conscious citizens who care about our planet's future," said Koenig. "The world is one big pasture that we, our children, and our children's children all have to share."



*This 1986 Suzuki Samurai took Warrington and Koenig on a 10,000 mile journey through some of the most desolate places in Western Africa.*



*There are several possible routes Keegan Warrington and Tate Koenig could have taken during the Africa Rally competition.*



Photography: Luke Brossette

During the race, Team COW raised money for The Rain Forest Foundation, Ape Action Africa and Send a Cow.

The rules of the Africa Rally are simple. Each team is limited to an unsuitable, one-liter engine vehicle. There are no routes, no formal support, and no back-up. Each team is entirely on its own to figure out how to cross one quarter of the globe while navigating scorching deserts, wild jungles and monsoon-swollen rivers.

Commenting to the Life @ OSU website, Warrington said he was inspired in part by a backpacking trip he took through Asia, adding that classes he took at Oregon State – including a political philosophy class – got him thinking about his moral obligation to help those in need. With his good friend, Koenig, the two co-founded COW. They then began to reach out to their Chi Phi fraternity brothers.



Warrington and Koenig pose before the Africa Rally begins.

Warrington came up with the idea while spending a year between high school and college attending an international school in China. There, he learned about the Mongolian Rally. When he learned about the Africa Rally alternative, he took a crazy idea and made it a reality.

**Pasha Golestenah, Epsilon Delta 2013**, immediately began to help by mapping out their route and obtaining visas for the Chi Phi adventurers. **Tim Chen, Epsilon Delta 2012**, and chapter Gamma, constructed the website, [www.beacow.com/new](http://www.beacow.com/new) to promote the program. **Connor Deeks, Epsilon Delta 2012**, provided media relations, blogging support, and he oversaw the financial operations. Deeks also serves as Epsilon Delta's Recruitment Chair and a member of the Oregon State IFC Recruitment Committee.

"I made sure everything that went wrong in Africa and Europe got fixed, and there was a ridiculously long laundry list of things that went wrong," explained Deeks. "We worked as a cohesive unit to accomplish our goals." Nearly 20 Chi Phi brothers participated in COW activities. Some provided car maintenance before it left the U.S. Others helped drive the car in shifts from Oregon to its departure point in California.

After mapping their route and preparing for their adventure as much as they possibly could, Koenig and Warrington left London, England on December 13, 2009.

## The Africa Rally

The adventure almost ended before it began. On December 10, 2009, Koenig and Warrington learned that terrorist activity and threats in Mali, Algeria and the Republic of Mauritania led the company sponsoring the Africa Rally to cancel the event. Even the threat of terrorism, however, could not deter these Chi Phi men. Within a few days, the Africa Rally sponsors revised the race route so that participants would bypass terrorist hotspot Mauritania, and the race was back on. Team Cow and most other Africa Rally teams arranged to ship their car from London to Dakar, Senegal.

They began their journey on Sunday, December 13, 2009.

Writing on the Team Cow blog on December 15, Koenig wrote, "The plan now is to basically just do the first leg of the rally by foot. We are planning to back pack through France, down through Spain and into Morocco. Then we will travel through Morocco until our car gets into Dakar. We will then catch a flight to Senegal and meet up with the Sami. The idea is to then finish the Rally and end up in Kribi, Cameroon safe and sound and with our car."

As they quickly learned, their initial plans were far from reality. Commenting on the decision to change the race route, Warrington said, "It was worth all the trouble bypassing Mauritania. We just learned that the government feared that local gangs in the area were beginning to target Westerners to sell them to Islamic extremist groups. It's all fun and games until you are being bound by Islamic terrorists in some dark cave."

Within days, Koenig and Warrington were in Paris, France. In Paris, the two redefined what it means to see the city and sites on a shoe-string budget.

From Paris, the pair made their way to Barcelona by Christmas Eve. Spending the night in a youth hostel, Warrington happened to fend off an attacker who pounced on him while he was sleeping.

One week later, they had made it to Africa. Warrington and Koenig arrived in Marrakesh, Morocco on December 31, 2009.

"We stayed in a small, old riad, a traditional Moroccan home, just outside a Medina, in a car-free region that had a circus like atmosphere," explained Warrington. "In the center of the Medina there was everything from snake charmers with four foot long cobra's and vipers to acrobats dancing around while men beat drums and played a violin-like instrument."

The pair experienced authentic Moroccan culture after befriending some local students and their families.

After a few days in Morocco, the adventurers made their way to the Sahara Desert on a new form of transportation - camels. Naming their camels Humphrey and Kane, the pair travelled across the Desert for two days until they boarded a plane for Dakar. In Dakar, they met locals, toured factories, visited former slave shipping centers and waited several days for their car to arrive.

After bribing local officials, they ultimately cleared their car through customs and headed east. Local police forces stopped them five times during their short journey. On one occasion, Koenig persuaded a police officer not to give them a ticket by bribing him with a head lamp and stick of chewing gum.

By January 23, they had arrived in Bamako, Mali.

Commenting on the initial road journey, Warrington wrote, "Despite the treacherous roads, the hundred degree weather and the corrupt police, our journey so far has been nice. We have been stopping along the way and handing out candy and some clothing to kids. It is amazing how happy these kids are just for a stick of gum. Wherever we go, kids and adults both wave and cheer us on as we drive by."

The next day, they left for Burkina Faso, a West African country of nearly 16 million people.

Posting to his blog, Warrington wrote: "We jammed to our iPod and drove for a good five hours dodging, weaving, and plowing over dirt, asphalt, and rocks to the Burkina Faso border. Compared to the Mali border, this one was a breeze. It was pretty much just five stops along a mile of road where they just checked, double checked, triple checked and rechecked all of our paperwork looking for any small flaw that could result in the need for a bribe... We successfully crossed the border and headed towards Bobo-Dioulasso, which is a city famous for its drums and butterfly masks. Despite being the third poorest country on the planet, the poverty we saw in Burkina seemed no more than its Saharan neighbors."

By February, Team Cow had reached Ghana, but they also lost two shock absorbers on their car. They remained optimistic that the remaining two would get them through the end of their journey.

Starting in Turtle Beach, they went east to Kata and ended the night staying in a large hotel. From there they drove to Lomo, then north to Sojode following roads that were much more suitable for travel. After reaching Nadoba, Togo they crossed the border into Benin on dirt roads. While



# CHI PHI STUDENTS RACING THROUGH AFRICA FOR A CAUSE

traveling along back-roads they came across a tribal society that they learned had not been encountered by white people until the 1970s. Warrington described their housing as miniature castles.

Traveling through Nigeria, the “Cow Mobile” as it was now being called, lost another shock and was now leaking transmission fluid. The car also had a cracked rear axle and broken exhaust. Serving as a make-shift mechanic, Koenig did his best and patched up the Suzuki Samurai for the remainder of their journey.

After some crazy happenings in Nigeria, Warrington and Koenig crossed the border into Cameroon and reached their destination in Kribi on February 18, 2010. In Kribi they finished their journey but continued their charity work. They donated the Suzuki Samurai to the Africa Rally organizers for a charity auction and distributed their remaining supplies to an orphanage in Kribi.

As he prepared to board the plane to take him back to the U.S., Koenig commented how it had not yet sunk in that they were returning home.

“Africa is about as different from home as anywhere could be,” he said, “but even after two months it starts to feel almost normal. It has been over a month since we have been somewhere under 70 degrees (including at night) and two months and 14 days since I have had ranch dressing. This trip has really helped us see how great we have it in the US, and we can’t wait to get back to it.”

Summarizing the achievement from Oregon, Deeks explained, “There were hundreds of participants in the Africa Rally this year. Many teams drove straight through as fast as they could; some teams quit or simply could not finish the journey. Tate, Keegan and the COW car took a much different route than planned, experienced many different cultures, conquered all of the difficulties during the journey and were the last ones to finish. While half of the teams didn’t make it to Kribi, our

team comprised of two very young drivers and a young COW staff made it.”

## The Chi Phi Connection

Most of the COW team members did not know one another before they arrived at Oregon State and joined Chi Phi.

Deeks tried to explain the feelings of the group: “During recruitment week at the beginning of our freshman year, Chi Phi was a smaller house that had just moved to a new location. Tate, Keegan and I saw it as a brotherhood with strong morals that we could build to new heights. We were initiated with 15 others and have since accomplished many goals. The house now has over 65 active members. We are ranked 6th in GPA in the Greek community. We participate in everything from philanthropies to intramural sports to leadership conferences. To me, Chi Phi was a place where there was a clear and strong bond of people who lived together. While Chi Phi has a great social side to it, it is not a dominating factor for the house.”

The Chi Phi Team Cow members demonstrate the initiative and drive that so many Chi Phi men across the country display. Working as a team - with their fraternity brothers and friends - Warrington and Koenig accomplished a goal that many believed would be impossible.

The crazy idea Warrington envisioned turned into the adventure of a lifetime that galvanized the Epsilon Delta Chi Phi chapter, a community of students at Oregon State University and hundreds of fans and supporters across the globe.

To learn more about the adventures of Warrington, Koenig, and their trip to support Team Cow, visit [www.beacow.com/new](http://www.beacow.com/new) or become a fan of “Citizen of the World” on Facebook.



Photography: Luke Brossette



# Chapters, Alumni Associations & Alumni Clubs

*Active membership numbers are as of February, 2010,  
before the Spring 2010 recruitment period.*

## ALPHA

### University of Virginia

[www.chiphivuva.com](http://www.chiphivuva.com)

*Active Members: 48*

*Fall 2009 Initiates: 0*

The Alpha Chapter celebrated its 150th anniversary October 3-4, 2009 (see the related article on page 11).

Last Fall, the chapter created the Community Outreach Chairman position to organize community service projects and establish relationships with community members and other organizations. As a result of this effort, the chapter has begun to work with the Charlottesville Food Bank to arrange several food drives at area grocery stores. They are exploring options to work with the Charlottesville Boys and Girls Club.

In addition to their direct community involvement, Alpha organized Hoodang for the 14th consecutive year. This philanthropic event raises funds for various causes. This year, the event raised \$2,000 for Disabled American Veterans.

## BETA

### Massachusetts Institute of Technology

<http://chiph.mit.edu>

[www.betachapter.com](http://www.betachapter.com)

*Active Members: 37*

*Fall 2009 Initiates: 0*

Beta held its annual Initiation Banquet on February 20, 2010.

## ZETA

### Franklin & Marshall College

[www.chiphizetachapter.com](http://www.chiphizetachapter.com)

*Active Members: 50*

*Fall 2009 Initiates: 14*

## ETA

### University of Georgia

*Active Members: 93*

*Fall 2009 Initiates: 30*

For the Fall 2009 semester at UGA, Chi Phi finished 7th academically out of 26 fraternities, with a 3.27 GPA, well over the All-Men's Undergraduate Average of 3.00. Only one member out of 103 was on academic probation, and 10% were on the Dean's List. The Chapter initiated 30 new members last Fall, and those new members had an average GPA over 3.2. These new members are following in the footsteps of last spring's University of Georgia valedictorian, **George Akers, Eta 2009**.

In January, the chapter sponsored a blood drive in front of their house with the American Red Cross. More than two dozen members lined up to donate blood. The afternoon drive was the second of three that Chi Phi intends to hold this year. The event caught the attention of the local newspaper, the *Athens Banner-Herald* which published a positive story about Chi Phi and fraternities at the University of Georgia.

Individual brothers continue to excel including **Trevor Brightwell, Eta 2010** who served as President of the Inter-Fraternity Council last year, and **Patrick Richardson, Eta 2011** the current Vice President of the Inter-Fraternity Council.

# Chapters, Alumni Associations & Alumni Clubs

Alumni leaders continue to work with The University of Georgia and City of Athens officials to develop their property in order to construct a new Chi Phi chapter house. Long-time alumni advisor **Jim Wimberly, Eta 1965**, made a \$300,000 pledge to the Eta Chapter Excellence Fund maintained by the Chi Phi Educational Trust to support the educational aspects of the new chapter house. In addition to Wimberly, **Scott Akers, Eta 1973** contributed \$33,255 worth of stock, **Peter Amann, Eta 1968** made a \$20,000 cash gift and Judge **Albert Pickett, Eta 1963** contributed \$4,985 worth of stock to help start the project. The Eta Trust Association anticipates launching a major fundraising effort later this year.

## THETA

### Rensselaer Polytechnic Institute

[www.thetaofchiphi.org](http://www.thetaofchiphi.org)

*Active Members: 45*

*Fall 2009 Initiates: 12*

## KAPPA

### University of Wisconsin

*Active Members: 0 - Chapter Not Currently Active*

After the Interfraternity Council at the University of Wisconsin denied their petition to return last Fall, Kappa alumni rallied to show their support and demonstrate the strength of Chi Phi. Following the failed vote, the Alumni Association organized a meeting with local alumni as well as IFC and University officials to discuss their desire to return to campus. Thirty-two alumni travelled to Madison to meet with nine IFC officers.

Interfraternity Council President Nate Anderson said he was extremely impressed and convinced that Chi Phi is in a position to return to campus.

“To witness firsthand the passion that the local alumni possess was influential in proving Chi Phi deserves an opportunity to come back,” Anderson said.

**Joe Hildebrandt, Kappa 1966, Bill Steinberg, Kappa 1968, and Andrew DeMarco, Kappa 1990** have volunteered as the Madison-area, new Chi Phi Colony Committee leaders. Their goal is to offer guidance and teach traditional Chi Phi values to the next round of recruits.

**Jim Wagner, Kappa 1981** continues to recruit era contacts in order to establish a communications network system. Chi Phi alumni interested in serving as an era contact or taking on another role should contact Jim at [wag@wi.rr.com](mailto:wag@wi.rr.com).

Staff from the Chi Phi National Headquarters intend to spend a month on campus this Fall to begin the recruitment process.

## LAMBDA

### University of California - Berkeley

*Active Members: 0 - Chapter Not Currently Active*

The Lambda Alumni Association held its annual alumni banquet on February 5, 2010.



While researching some chapter history, **Stuart Jones, Lambda 1979**, discovered what he believes to be the first Chi Phi chapter house at the University of California-Berkeley. The back of the photo indicates the photograph was taken on April 3, 1879, just four years after the founding of the chapter and likely includes some of the founding members.

During that research, Stuart also learned that the late Sammy Davis, Jr. performed at the Lambda House on November 21, 1955.



*Sammy Davis, Jr. performed at the Lambda Chapter House for Chi Phis and their dates on November 21, 1955.*

# CELEBRATING 150 YEARS OF CHI PHI AT



Several hundred alumni, spouses and guests spanning eight decades, returned to Charlottesville, Virginia for a weekend full of events to celebrate the 150th anniversary of Chi Phi at the University of Virginia. Alumni and their guests who returned for the festivities enjoyed a cocktail reception at Ruffin Hall, an Alumni Barbecue at the Chi Phi House and a black-tie Gala Dinner Dance at Alumni Hall.

“The Anniversary weekend provides a unique opportunity for brothers of all generations to gather and to learn about the past from firsthand sources,” said past chapter Alpha **Jamie Smith-George, Alpha 2010**.

During the weekend, the chapter also announced that their campaign to raise \$150,000 in honor of the 150th anniversary had surpassed its goal. Alpha alumni contributed \$259,890.12 to support scholarships and educational programming for the Alpha Chapter Excellence Fund maintained and managed by the Chi Phi Educational Trust

**William Mellen, Alpha 1953, Grand Alpha Jim Soderquist, Alpha 1967, Alpha Alumni President Owen Parry, Alpha 1965 and Lee Rasmussen, Alpha 1993** served as co-chairs for the event.



# Alpha CEF 150th Anniversary Campaign Donors

*Chi Phi recognizes and thanks the following men who supported the campaign to raise funds in honor of Chi Phi's 150th Anniversary at the University of Virginia.*



Thomas B. Worsley\*, Alpha '33  
William P. Snavely, Alpha '40  
Ralph H. Alexander, Jr., Alpha '47  
Richard F. Hall, Jr., Alpha '47  
Jack P. Cook\*, Alpha '48  
Landon R. Wyatt, Jr., Alpha '49  
Frank M. Thompson, Alpha '50  
S. Frank Blocker, Jr., Alpha '50  
William B. Guerrant, Alpha '50  
James H. Whiting, Alpha '52  
Daniel C. Elkin, Jr., Alpha '53  
William Robert Mellen, Alpha '53  
Albert D. Ernest, Jr., Alpha '54  
H. Mitchell Dunn, Jr., Alpha '54  
James F. Doetsch, Jr., Alpha '54  
Thomas O. Trotter, Alpha '54  
James H. Hill III, Alpha '58  
Robert M. Davison, Alpha '59  
Grayson E. McNair, Alpha '62  
Robert W. Whitman, Alpha '62  
William G. Ender, Jr., Alpha '62  
John P. Doherty, Alpha '63  
Peter T. Johnson, Alpha '64  
Robert J. Thornton III, Alpha '64  
Bower R. Patrick III, Alpha '65  
Edward O. Parry, Jr., Alpha '65  
A. Hardin White, Jr., Alpha '66  
James P. Soderquist, Alpha '67  
John Lewis Goodloe III, Alpha '67  
Alastair S. Macdonald, Alpha '67  
George C. Toop, Jr., Alpha '67

William R. Dandridge, Jr., Alpha '67  
Ernest Kirk II, Alpha '68  
Jeffrey B. Shields, Alpha '69  
David E. Tatum, Alpha '71  
Thomas M. Eckis, Alpha '71  
J. Robert Henderson, Alpha '72  
Michael R. Garrett, Alpha '72  
Samuel W. Fairchild, Alpha '73  
Kevan E. Van Landingham, Alpha '74  
Robert G. Topping, Alpha '74  
William L. Stobbart, Alpha '74  
David R. Beran, Alpha '76  
Michael S. Beall, Alpha '76  
Stanley K. Joynes III, Alpha '77  
John K. Parsell, Alpha '78  
Robert F. Mizell, Alpha '78  
William F. Garrahan, Jr., Alpha '79  
John R. Gilchrist, Alpha '81  
John F. Harris, Alpha '82  
Norman F. Lent III, Alpha '82  
Brandon C. Smith, Alpha '83  
LTC Thomas Erik Miller, Alpha '89  
F. Stanford Massie, Jr., Alpha '90  
David W. Marshall, Alpha '90  
John C. Kokola, Alpha '91  
Christopher J. Wisniewski, Alpha '92  
James R. Burnett, Jr., Alpha '93  
Richard G. Rasmussen III, Alpha '93  
Edwin C. Stone, Jr., Alpha '94  
Christopher A. Boals, Alpha '95  
Joshua Mathew Nowocin, Alpha '96

Kevin F. Hull, Alpha '96  
Eric J. Conn, Alpha '97  
Michael Ryan Assenza, Alpha '97  
Byron L. Pickard, Alpha '98  
J. Sheppard Maher, Alpha '98  
Nathan A. Mackey, Alpha '98  
Aaron P. Wolfe, Alpha '99  
Christoph Hamann, Alpha '99  
Daniel P. Mattock, Alpha '99  
Gregory W. Trimmer, Alpha '99  
Jonathan M. Griffin, Alpha '99  
Matthew V. Kozlowski, Alpha '99  
Matthew W. O'Neill, Alpha '99  
Nicholas A. Bever, Alpha '99  
Robert C. Decker, Alpha '99  
Sean M. Oliphant, Alpha '99  
Thomas A. McKnight, Jr., Alpha '99  
Jason B. Bockenek, Alpha '02  
Philip A. Taliaferro, Alpha '04  
Sean N. Bowie, Alpha '04  
Andrew S. Daly, Alpha '05  
Zachary Fleet Hill, Alpha '06  
Cullen A. Hitt, Alpha '09  
Evan M. Berger, Alpha '09  
Ian P. White, Alpha '09  
John Gelb, Alpha '09  
Matthew P. Massey, Alpha '09  
Samuel J. Holbert, Alpha '09  
Thomas N. Bakke II, Alpha '09

\* Deceased

# AROUND CHI PHI

## MU

### Stevens Institute of Technology

Active Members: 29  
Fall 2009 Initiates: 0

## NU

### University of Texas

www.txchphi.org  
www.nuchphi.org

Active Members: 15  
Fall 2009 Initiates: 3

Nu held its 8th Annual Founders Weekend on November 7 - 8, 2009, in conjunction with the University of Texas vs. University of Central Florida football game.

## XI

### Cornell University

www.chiphicornell.org

Active Members: 51  
Fall 2009 Initiates: 0

## RHO

### Lafayette College

www.chiphirho.org

Active Members: 0 - Chapter Not Currently Active

Rho Chapter is nearing the end of its five-year suspension with Lafayette. The Alumni Association hopes to recolonize soon after the college suspension ends in May 2010.

## SIGMA COLONY

### University of Illinois

Active Members: 13  
Fall 2009 Initiates: 3

## UPSILON

### Hobart College

Active Members: 26  
Fall 2009 Initiates: 11

## PSI

### Lehigh University

Active Members: 46  
Fall 2009 Initiates: 0

## OMEGA

### Georgia Institute of Technology

www.gtchphi.org

Active Members: 38  
Fall 2009 Initiates: 5

## ALPHA-ALPHA

### University of North Carolina at Chapel Hill

www.aachphi.com

Active Members: 63  
Fall 2009 Initiates: 15

## ALPHA-SIGMA

### Princeton University

princetonchphi.org

Active Members: 28  
Fall 2009 Initiates: 0

## ALPHA-TAU

### University of Michigan

www.alpha-tau.org

Active Members: 59  
Fall 2009 Initiates: 0

Alpha-Tau reminds and invites all alumni to continue returning for Homecoming on October 16, 2010.

## ALPHA-CHI

### Ohio Wesleyan University

www.owuchphi.org

Active Members: 33  
Fall 2009 Initiates: 2

Last October, Alpha-Chi treated area residents and children to the 25th year of its Haunted House event (see the related article on page 14).

# 25 YEARS OF GHOSTS, GORE AND HAUNTED HOUSES AT OHIO WESLEYAN



Around Halloween each year – since 1984 – the Chi Phi Fraternity Chapter house at Ohio Wesleyan University undergoes a transformation from a Victorian-era designed chapter house to a spook-filled haunted house that opens to the public.



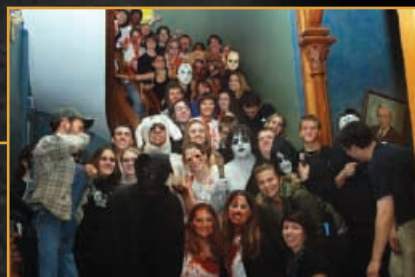
Chi Phi's Haunted Houses features four spooktacular floors, each with its own theme. The first floor is a haunted swamp, complete with an old dock and creepy shed. The second floor is the “brutal horror” floor, which is a tribute to 25 years of horror films. The third floor is the torture floor where a creepy doll sits on a tricycle and leads visitors through the gore and debris, and the last floor on the tour is the basement, which consists of a nearly pitch-dark maze—and a little extra surprise. As people exit the building, a chain saw-wielding brother meets them for one final scare.

“Haunted House has always been one of the most spectacular things to happen in the fall, and the 25th anniversary made it the best we had ever had,” said **Will Heistand, Alpha-Chi 2010**, who served as co-chair of the project with **Neill McGrann, Alpha-Chi 2010**.



The annual event raises money for the Delaware, Ohio Program for Big Brothers Big Sisters and People in Need, Inc, a family service agency for Delaware County residents.

Ohio Wesleyan students with a valid university ID pay \$5.25 (or use \$5.25 in University food points) to tour the Haunted House. Non-students over the age of 12 pay \$6.25, and those under pay \$3.25. Everyone is encouraged to bring a can of food to save a dollar off of the admission price.



The men of Chi Phi and other Ohio Wesleyan students volunteer to work the haunted house. Designated tour guides escort each group giving an eerie tale of the house.

“This year, we had over 600 visitors go through the house, and we raised more than \$3,000 for charity,” said Heistand.

# AROUND CHI PHI

## EPSILON DELTA

### Oregon State University

oregonstate.edu/groups/chiphi

Active Members: 51

Fall 2009 Initiates: 19

## THETA DELTA

### University of Florida

grove.ufl.edu/~chiphifl

Active Members: 62

Fall 2009 Initiates: 19

Theta Delta raised \$700 for the Alachua Boys and Girls Club through a capture the flag tournament.

## RHO IOTA KAPPA

### University of Rhode Island

chiphiri.com

chiphiuri.com

Active Members: 46

Fall 2009 Initiates: 16

With 46 men, Rho Iota Kappa officially chartered on November 14, 2009 (see related article on page 16). An alumni celebration will take place with a golf tournament and Alumni Banquet on Friday, April 30, 2010, at Beaver River Golf Club in Richmond, Rhode Island and a cocktail reception and Dinner Dance on Saturday, May 1, 2010, at the Providence Marriott. For more information and to register, visit <http://chiphiri.com>.

## ALPHA THETA CHI

### University of Nebraska

www.nebraskachiphi.org

Active Members: 17

Fall 2009 Initiates: 3

*Rob McCartney, Alpha Theta Chi 1984 presents the Roscoe Pound Award to Gene Oglesby, Alpha Theta Chi 1966.*



Alpha Theta Chi held its 45th anniversary celebration on Saturday, November 6, 2009, at the Embassy Suites in Lincoln, Nebraska. During the banquet celebration, led by emcee **Rob McCartney, Alpha Theta Chi 1984**, Chi Phi recognized the 2009-2010 Alpha Theta Chi and Chi Phi Educational Trust scholarship recipients. The fraternity also awarded the chapter's first Roscoe Pound Award to **Gene Oglesby, Alpha Theta Chi 1966**.

Executive Director **Michael Azarian, Psi Delta 1997**, was there to help Alpha Theta Chi recognize all alumni who graduated 25 or more years ago with their 25-year pin. **Thom Kastrup, Alpha Theta Chi 1988** and his planning committee organized the event.

Alpha Theta Chi alumni and friends are invited to several upcoming events:

- **April 17, 2010** - Annual Alumni Weekend including Cornhuskers Spring Game
- **July 31, 2010** - Annual Meeting and Chi Phi Golf Outing (Omaha area)
- **Fall 2010 TBA** - Annual Homecoming Tailgate.

Once again, Chi Phi is offering game-day parking passes exclusively to Chi Phi alumni for University of Nebraska football games including the Spring game, April 17. Alumni can purchase a reserved spot for just \$200 for the entire season. Contact **Joe Putjenter, Alpha Theta Chi 2012** at [jputjenter@hotmail.com](mailto:jputjenter@hotmail.com) for more information.

## DELTA XI

### West Virginia Wesleyan College

chiphi-deltaxi.com

Active Members: 22

Fall 2009 Initiates: 2

## KAPPA DELTA

### University of Rochester

sa.rochester.edu/chiphi

Active Members: 34

Fall 2009 Initiates: 0

## MU DELTA

### Auburn University

www.auchiphi.com

Active Members: 50

Fall 2009 Initiates: 1



# RHO IOTA KAPPA CHARTERS

By: Charlie Wilbur, Rho Iota Kappa 2011



Sixteen founding fathers showed they can make a difference as they took Rho Iota Kappa from colony to chapter (and close to 50 members) in a little over a year and a half. On November 14, 2009, Rho Iota Kappa formally Re-Chartered at the University of Rhode Island.

The sixteen men who helped start what was then a new colony did all that they could to not only learn Chi Phi's history and culture, but also to contribute to it. They sent delegates to the 2008 and 2009 Chi Phi Congress. They hosted a Regional Leadership Alliance where all colony members participated. They also recruited. At the time of chartering, Rho Iota Kappa had 46 members - 30 members more than the original group of 16 who started the colony.

The Re-Chartering Ceremonies took place at Lilliana's Restaurant in Kingston, Rhode Island. On hand were brothers from Lambda Theta at the University of Massachusetts-Dartmouth, nearly 50 Rho Iota Kappa alumni as well as other distinguished guests.

"Rho Iota Kappa owes a great debt of gratitude for Lambda Theta's unwavering guidance and support in our journey to become a chapter," said Chapter Alpha **Daniel Albani, Rho Iota Kappa 2011**. "We also can't thank the national staff and our alumni enough for all they did to get us here."

Grand Alpha **Jim Soderquist, Alpha 1967**, conducted the ceremony and spoke about his own feelings of joy to see the Fraternity grow stronger and return to such an important campus.

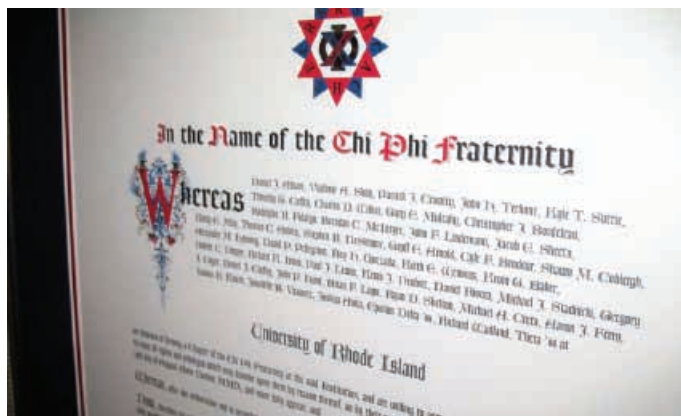
In addition to Soderquist, other special guests included Grand Iota **Charlie Wilbur** (one of Rho Iota Kappa's founding fathers), past Grand Alpha **Rocco Henry Carnevale, Mu 1980**, past Grand Alpha **Jim Edgerton, Beta 1966, Rho Iota Kappa 1986**, former staff member

**Sean Murphy, Lambda Theta 2008**, Executive Director **Michael Azarian, Psi Delta 1997** and Chi Phi Director of Leadership Education **Kim Godwin**.

Equally as interested in the re-chartering events were Rho Iota Kappa alumni. The number of alumni that attended nearly matched the actives. Alumni came from all over the State of Rhode Island and beyond to celebrate the occasion.

Several alumni officers and advisors participated including Alumni Association President **Doug Bennet, Rho Iota Kappa 1977**, Chapter Advisor **Greg Bradfield, Rho Iota Kappa 1989** and **Kevin Barry, Rho Iota Kappa 1989**, the chapter's unofficial Morale Officer.

"It was a remarkable night," explained **Executive Director Michael Azarian, Psi Delta 1997**. "Throughout the colonization process these young men took advantage of all of the programs offered by the National Fraternity, and it made a difference in their success."



The Re-Chartering Ceremony concluded with the time-honored Rho Iota Kappa tradition of singing "Our House". During the rousing rendition, actives and alumni saw the meaning of brotherhood illustrated before their eyes.

"Rho Iota Kappa Chapter would like to once again thank everyone who had even the smallest of hands in helping us achieve this goal," said Albani. "The Chapter looks forward to upholding the high expectations set for it, and invites one and all to share in looking back on that evening with them."

View pictures from the event at <http://chiphiri.com>.

# TOP 11 CHAPTERS

## BY TOTAL MEMBERSHIP

Nu Delta, Florida State University.....	107
Eta, University of Georgia .....	93
Phi Lambda Theta, Bucknell University .....	73
Alpha-Alpha, University of North Carolina, Chapel Hill.....	63
Theta Delta, University of Florida .....	62
Alpha Zeta, University of West Georgia .....	60
Alpha-Tau, University of Michigan .....	59
Psi Delta, University of North Carolina, Charlotte .....	58
Omega Zeta, University of North Florida .....	53
Xi, Cornell University .....	51
Epsilon Delta, Oregon State University .....	51

# TOP 10 CHAPTERS

## BY FALL 2009 INITIATES

Nu Delta, Florida State University .....	42
Eta, University of Georgia .....	30
Phi Lambda Theta, Bucknell University .....	29
Omega Zeta, University of North Florida.....	21
Epsilon Delta, Oregon State University.....	19
Theta Delta, University of Florida .....	19
Tau Zeta, Boston University .....	17
Rho Iota Kappa, University of Rhode Island.....	16
Mu Delta, Auburn University .....	16
Alpha-Alpha, University of North Carolina, Chapel Hill.....	15

# AROUND CHI PHI

## NU DELTA

### Florida State University

[www.chiphfsu.com](http://www.chiphfsu.com)

Active Members: 107

Fall 2009 Initiates: 42

## XI DELTA

### Florida Institute of Technology

Active Members: 25

Fall 2009 Initiates: 9

## OMICRON DELTA COLONY

### Miami University

Active Members: 20

Fall 2009 Initiates: 0

Chi Phi had the “Best Initiated Member” and “Best All Member” grade point average at Miami University for the Fall 2009 semester. Their GPA of 3.19 beat every other fraternity on campus in both rankings. Alumni with questions about Omicron Delta's finances should contact Bob Shoenewald, Omicron Delta 1978 at [rschoenewald@roadrunner.com](mailto:rschoenewald@roadrunner.com).

## PI DELTA

### University of West Virginia

[www.pideltaalumni.com](http://www.pideltaalumni.com)

Active Members: 0 - Chapter Not Currently Active

The Pi Delta Alumni Association continues to work closely with the Chi Phi National Headquarters to develop a plan to return the active chapter to Morgantown. Director of Expansion **Paul Janowicz, Alpha-Chi 2008** recently began talking with WVU's Director of Greek Life, Bob Kent, about the eventual return of Chi Phi.

“Kent was very positive,” explained Janowicz. “He says we have an open invitation to reopen Chi Phi at WVU, and this is an important first step to our return.”

Although the Alumni Association has not yet committed to a return timetable, they continue to evaluate conditions in Morgantown to make sure a new chapter can sustain itself.

To learn more or get involved with the expansion discussion, alumni are encouraged to contact [pideltaalumni@gmail.com](mailto:pideltaalumni@gmail.com).

# Chapters, Alumni Associations & Alumni Clubs

## RHO DELTA

### Oglethorpe University

[www.chakettclub.org](http://www.chakettclub.org)

*Active Members: 24*

*Fall 2009 Initiates: 8*

Atlanta Intown magazine recently featured **Alfred Rudzki, Rho Delta 2012**, as one of Atlanta's 20 students under age 20 who have passion and take initiative to help others in the community.

Rudzki is the Philanthropy Chairman for Rho Delta. With the chapter, he organized a team and raised money for the American Cancer Society's Relay for Life. He also volunteers at the Lynwood Park Recreation Center after school program.

"I'm most proud of working with the children at Lynwood, more than anything else," Rudzki said. "I love working with children. As a mentor, you're one of the important forces early in their life, and you are adding to the bedrock that everything else is built on."

## SIGMA DELTA

### University of California-Davis

*Active Members: 23*

*Fall 2009 Initiates: 0*

## PHI DELTA COLONY

### University of Tennessee

[chiphut.com](http://chiphut.com)

*Active Members: 22*

*Fall 2009 Initiates: 4*

## PSI DELTA

### University of Carolina-Charlotte

[www.chiphicharlotte.com](http://www.chiphicharlotte.com)

*Active Members: 58*

*Fall 2009 Initiates: 0*

Last Fall, Chi Phi partnered with Sigma Kappa Sorority to help manage a Red Cross Blood Drive on UNC-Charlotte's campus. A few days after that great event, Chi Phi participated in a creek clean-up at two new

locations on campus. One of the clean-up locations was in front of the new Student Union. In conjunction with Alpha Delta Pi, Psi Delta also hosted their 6th annual Haunted House to benefit both the Boys and Girls Club of America and the Ronald McDonald House. Collectively, Chi Phi and ADPi provided more than 3,000 community service hours to these charities with their "CarnEvil"-themed Haunted House production.

## ALPHA ZETA

### University of West Georgia

[www.azhouse.org](http://www.azhouse.org)

*Active Members: 60*

*Fall 2009 Initiates: 10*

The Alpha Zeta Alumni Association will hold the Chi Phi Memorial Fund Golf Tournament on April 23, 2010, to raise money for their scholarship endowment. The event takes place at the Sunset Hills Country Club in Carrollton, Georgia and starts at 1:00 p.m. Individuals can participate for \$150. Golfers are to make their entry check payable to the UWG Foundation.

The Alumni Association hits the links again on July 23, 2010, for Hackerfest 2010, at the Laurel Springs Golf Club in Suwanee, Georgia. The two-man scramble starts at 1:00 p.m., and a BBQ/ after party follows. The greens fee is \$50, and the event fee is \$100. Make registration checks payable to "AZHA."

For more information about either event, contact **Chris Shuler, Alpha Zeta 1984** at [chris.shuler@vitalsolutions.net](mailto:chris.shuler@vitalsolutions.net).

## DELTA ZETA

### University of South Florida

*Active Members: 16*

*Fall 2009 Initiates: 0*

# AROUND CHI PHI

## PHI LAMBDA THETA

### Bucknell University

[www.orgs.bucknell.edu/chiphi](http://www.orgs.bucknell.edu/chiphi)

Active Members: 73

Fall 2009 Initiates: 29

Following the devastating earthquakes in Haiti, Phi Lambda Theta created a Facebook page entitled, "Bucknellians Supporting Haiti - Chi Phi Fraternity" that grew to 348 members. In describing the purpose of the page, Chi Phi wrote, "As a fraternity, the Phi Lambda Theta chapter of Chi Phi recognizes the importance of philanthropy. In this time of great need for those in Haiti, we are calling upon everyone - administrators, classmates, friends, family, and complete strangers - to give what they can to help those who need help the most."

## EPSILON ZETA

### Humboldt State University

[www.epsilonzeta.org](http://www.epsilonzeta.org)

Active Members: 6

Fall 2009 Initiates: 0

Epsilon Zeta held its 24th Annual Chartering banquet on April 2 - 4, 2010.

## THETA ZETA

### Texas A&M University

[www.aggiechiphi.com](http://www.aggiechiphi.com)

Active Members: 8

Fall 2009 Initiates: 8

## LAMBDA ZETA

### St. Mary's University

Active Members: 20

Fall 2009 Initiates: 2

## MU ZETA

### University of Denver

[www.du.edu/orgs/chiphi](http://www.du.edu/orgs/chiphi)

Active Members: 32

Fall 2009 Initiates: 6

In May, Mu Zeta will host the 2010 Chi Phi Formal and Annual Awards Assembly at the Evergreen Lodge in Vail, Colorado.

## PI ZETA

### Binghamton University of New York

Active Members: 26

Fall 2009 Initiates: 4

## SIGMA ZETA

### State University of New York, Albany

[www.szalumni.org](http://www.szalumni.org)

Active Members: 8

Fall 2009 Initiates: 0

# 2010 UNDERGRADUATE FEES

### FEE

New Member Fee

Initiation Fee

Spring Dues

Spring Insurance

### AMOUNT

\$80 per man

\$240 per man

\$45 per member  
*(does not include new members  
for the Winter / Spring term)*

\$70 per man *(for new initiates)*

### DUE DATE

Five days after pinning

Two weeks prior to Initiation



# Chapters, Alumni Associations & Alumni Clubs

## TAU ZETA

**Boston University**

[www.chiphitauzeta.net](http://www.chiphitauzeta.net)

*Active Members: 38*

*Fall 2009 Initiates: 17*

## PSI ZETA

**University of Texas-Dallas**

[www.chiphitd.com](http://www.chiphitd.com)

*Active Members: 34*

*Fall 2009 Initiates: 11*

The kayakpower.com blog featured the UT-Dallas Chi Phi chapter in recognition of the teamwork they provided to clean an area lake. The organization posted pictures from the event and made the following comment on the blog, "These guys showed you can have lots of fun while out with your buddies while keeping the lake litter free." Read more at [www.kayakpower.com](http://www.kayakpower.com).

## OMEGA ZETA

**University of North Florida**

[www.chiphionf.com](http://www.chiphionf.com)

*Active Members: 53*

*Fall 2009 Initiates: 21*

## DELTA PI

**Georgia Southwestern State University**

[www.chiphideltapi.com](http://www.chiphideltapi.com)

*Active Members: 19*

*Fall 2009 Initiates: 5*

## GAMMA THETA

**Indiana University of Pennsylvania**

[iupchphi.org](http://iupchphi.org)

*Active Members: 26*

*Fall 2009 Initiates: 0*

## EPSILON THETA

**East Carolina University**

*Active Members: 21*

*Fall 2009 Initiates: 2*

## ZETA THETA

**State University of New York, Oneonta**

[www.chi-phi.org](http://www.chi-phi.org)

*Active Members: 38*

*Fall 2009 Initiates: 5*

## ETA THETA

**University of Maryland**

[www.umdchphi.com](http://www.umdchphi.com)

*Active Members: 43*

*Fall 2009 Initiates: 6*

## THETA THETA

**Shorter College**

*Active Members: 8*

*Fall 2009 Initiates: 0*

## IOTA THETA

**Schreiner University**

[students.schreiner.edu/sub\\_chiphi/](http://students.schreiner.edu/sub_chiphi/)

*Active Members: 13*

*Fall 2009 Initiates: 2*

## LAMBDA THETA

**University of Massachusetts, Dartmouth**

*Active Members: 27*

*Fall 2009 Initiates: 0*

## ALUMNI ASSOCIATION DUES

Thanks to the Alpha Zeta House Association and Delta Xi Alumni Association for being the first to pay their voluntary alumni association dues to the Chi Phi National Headquarters in 2010. Alumni association dues help fund the costs of alumni programming, association support and insurance coverage for alumni association officers. To pay your association's 2010 dues, contact **Richard Kuerston, Mu Zeta 2002** at [kuerston@chiphio.org](mailto:kuerston@chiphio.org) or (404) 231-1824.

### MU THETA

#### University of the Incarnate Word

[www.chiphimutheta.com](http://www.chiphimutheta.com)

*Active Members: 27*

*Fall 2009 Initiates: 9*

Mu Theta invites all alumni, current members and guests to the Alumni Homecoming Weekend Banquet which starts with a Meet and Greet on Friday, October 29, 2010. On Saturday morning, October 30, 2010, guests are invited to tailgate with Mu Theta before the UIW vs. West Texas A&M football game. A dinner and social follows that evening. Those interested can play golf at 9:00 a.m. on Sunday, October 31, 2010, with the Mu Theta Alumni Association Business Meeting to follow. The weekend honors members of the Alpha Class: **Adam Longer, Mu Theta 2003, Kevin Barnes, Mu Theta 2004, Eric Martinez, Mu Theta 2004** and **Marco Munoz, Mu Theta 2003**. For more information, contact **Glenn Johnson, Mu Theta 2004**, at [johnson@chiphio.org](mailto:johnson@chiphio.org) or 210-602-9626. Alumni can also visit the website at [www.chiphimutheta.com](http://www.chiphimutheta.com) or on Facebook at Mu Theta Chapter of the Chi Phi Fraternity/events.

### NU THETA

#### The College of William & Mary

*Active Members: 23*

*Fall 2009 Initiates: 5*

### PCT COLONY

#### Pennsylvania College of Technology

[www.chiphipct.com](http://www.chiphipct.com)

*Active Members: 8*

*Fall 2009 Initiates: 4*

Chi Phi had the highest grade point average of all Greek organizations at Penn College with a 3.134. They created a six-minute, high-definition recruitment video and posted it on YouTube entitled "Chi Phi Fraternity: Penn College Colony."

## SOUTHERN UTAH UNIVERSITY COLONY

Southern Utah University

Active Members: 11

## ALPHA PI TAU COLONY

Keene State College

Active Members: 7

## SUNY - PLATTSBURG COLONY

Active Members: 19

## EASTERN ILLINOIS UNIVERSITY COLONY

Active Members: 8

The Chi Phi Colony at Eastern Illinois University is the newest in the Fraternity. Learn more about them on page 24.

Do you have news you want to share about your chapter or Alumni Association? Send it to [hamilton@chphi.org](mailto:hamilton@chphi.org). Include some high resolution pictures. To ensure inclusion of your chapter or Alumni Association's news in the Fall 2010 *Chakett*, **submit the information prior to September 1, 2010.**



# CHI PHI WANTS TO RECOGNIZE YOUR CHAPTER

*Applications Due May 1, 2010*

Each year the Chi Phi Fraternity recognizes its best Chapters, Colonies, Alumni Associations and individuals during the Congressional Banquet with a variety of awards including the E. Bates Block Award for Campus Involvement, the Philanthropic Achievement Awards, the Outstanding Newsletter Award, William M. Byrd Alumnus of the Year Award, Chapter Advisor of the Year Award, the Carl J. Gladfelter Leadership Award and the Dr. Thomas Gehring Award for Chapter Excellence.

The Gladfelter Award is the highest honor bestowed upon an individual member. The Thomas Gehring Award is the highest honor bestowed upon a Chi Phi Chapter. It distinguishes those groups that set the standard of excellence both within the Fraternity and on interfraternal levels.

All groups are encouraged to apply for these awards by downloading, completing and returning the awards application packet available at [www.chphi.org](http://www.chphi.org). The application deadline is May 1, 2010.




# The First Steps to Resurrecting a Dormant Chi Phi Chapter



By: Paul Janowicz, Alpha-Chi 2008, Director of Expansion

For the last several years Chi Phi prioritized recolonization projects in its expansion plan. In the past three years alone, we saw the return of Omicron Delta (Miami University, OH), Sigma (University of Illinois), Rho Iota Kappa (University of Rhode Island) and Phi Delta (University of Tennessee). Plans are in place to restore the Kappa and Tau Chapters at the University of Wisconsin and the University of Alabama, respectively, next fall.

To continue to bring back historic Chapters, Chi Phi needs alumni assistance. Recolonization projects only succeed when local alumni are organized, resourceful and well-prepared. As an alumnus of a dormant group, consider taking the following steps to help bring your Chapter or Colony back:

-  Contact your Alumni Association President to see where things stand and what you can do to help. If your Chapter does not have an active alumni association, start one. It's really the first step to the Chapter's return.
-  Consider what you can contribute. Expansions have multiple opportunities and needs for alumni involvement. New groups need advisors, projects need funding and new members need to see the connection between generations of Chi Phis so they understand the importance of our glorious history. Any assistance you can provide is appreciated.
-  Talk to other Chi Phis. Spread the word, help involve others and open up as many lines of communication as possible.

If you have any questions about the status of your chapter or its future, please contact Chi Phi's Director of Expansion, **Paul Janowicz, Alpha-Chi 2008** at [janowicz@chiphil.org](mailto:janowicz@chiphil.org). Remember, we need your support to make Chi Phi grow.

Are you a member of a dormant Chi Phi Chapter or Colony?

Has it been too long since Chi Phi held a prominent position in your alma mater's community?

Do you want to be part of history?



# CHI PHI EXPANDS TO EASTERN ILLINOIS

After the wait and preparation of more than three years along with three weeks of intense on-the-ground recruitment, Chi Phi opened a new colony at Eastern Illinois University in Charleston, Illinois, on March 11, 2010, with the induction of 8 men into the founding class.



The men who joined the new colony represent all walks of campus life and include some of the highest quality campus leaders. Among other things, the men that joined are involved in:

Racquetball Club (President and VP), Panther Pride (President), Special Olympics (Volunteers), Big Brother Big Sister, Society of Human Resource Management, Relay for Life, Honors College, two serve as RAs in the freshmen dorm, Emerging Leaders, Alpha Phi Omega Service Fraternity (President), and Intramural Basketball and Volleyball. With the assembly of so much ability into one group, the colony has all of the tools they need to leave their mark on Eastern Illinois' campus.

These new Chi Phi colony members join a Greek community of more than 1,400 students. Chi Phi is now one of 12 IFC organizations.

It was the University itself that reached out to Chi Phi several years ago. On May 27, 2007, EIU officially granted Chi Phi permission to create a brand new chapter there. Preparations have been underway since that time.

"The university presented us with an environment that fit perfectly into Chi Phi's expansion plans," said Director of Expansion **Paul Janowicz, Alpha-Chi 2008**. "Eastern Illinois boasts a student population of more than 10,000 undergraduates, owns a reputation for producing prominent alumni (including John Malkovich, Tony Romo, and 2010 Super Bowl Champion Coach Sean Peyton) and is home to a continuously growing Greek community."

The university's location was also a major factor in Chi Phi's decision to expand to Eastern Illinois.

"Chi Phi has been making a concentrated effort to focus on revitalizing our presence in the Midwest region and continue expanding west," explained Janowicz. "The colony at Eastern Illinois is a mere hour from their Sigma Colony neighbors at the University of Illinois, and it should help Chi Phi build even stronger alumni bases in the Indianapolis, St. Louis and Chicago areas."

With freezing temperatures, snow drifts and chilling winds, the environment in Charleston was anything but welcoming. Nevertheless, Janowicz and Chi Phi's newest Field Executive, **Marcus Powers, Theta Delta 2009**, found plenty of welcome mats immediately upon their arrival in mid February.

In an effort to build Chi Phi's reputation on campus, the two met with sororities, student groups, campus leaders, and faculty members as often as they could. They were also involved with local philanthropy functions like Make-a-Wish. With a strong network, a positive message, and an opportunity unlike any other, the two quickly built a base of interested men who eventually decided to create their own Chi Phi legacy.



"Expansions are always a great experience because you get to give these students an opportunity to improve their lives on every level possible," commented Powers. "Our organization offers immediate benefits in the areas of scholarship, service and leadership development. We teach our members the value of living a life of social excellence and help them form friendships and bonds that will last forever. It may be an exhausting process, but the end product more than justifies the effort."

# CHI PHI IS CHANGING ATTITUDES ABOUT

## DEMOGRAPHICS OF PARTICIPATING CHI PHI MEMBERS

The 143rd Chi Phi Congress in New Orleans, Louisiana, passed a motion that requires all new members of the Chi Phi Fraternity to complete a new online program, GreekLifeEdu™, prior to initiation. This decision reflects Chi Phi's commitment to the health and welfare of its members.

Outside the Classroom ([www.outsidetheclassroom.com](http://www.outsidetheclassroom.com)), developed GreekLifeEdu™ to educate members about behaviors that compromise personal safety and challenge members' preconception of social norms. GreekLifeEdu is an interactive program that educates members on the issues surrounding alcohol consumption, hazing and sexual assault.

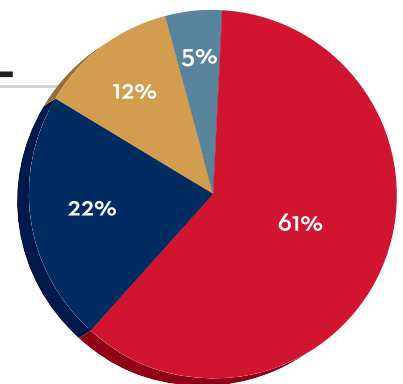
Through the program, members learn what is in a "standard drink", different factors that affect Blood Alcohol Concentration (BAC), how to help a friend who experiences an alcohol overdose and safe party host guidelines. Next, students learn to identify different forms of hazing and have access to state-by-state laws about the issue. The program also asks students to generate a list of safe initiation practices to use in their chapter.

The final module presents the facts and myths that surround sexual assault. It challenges the perceived social norms about male behaviors and attitudes and provides guidelines for determining consent. Video scenarios provide members with tools to intervene when they witness inappropriate behavior or assault.

To date, 745 Chi Phi members have taken the online course through Chi Phi while several dozen more took it through their college/university. Sixty-one percent (61%) were freshman, and 64% lived in a college residence hall when they took the course. As a result of this course, attitudes are changing.

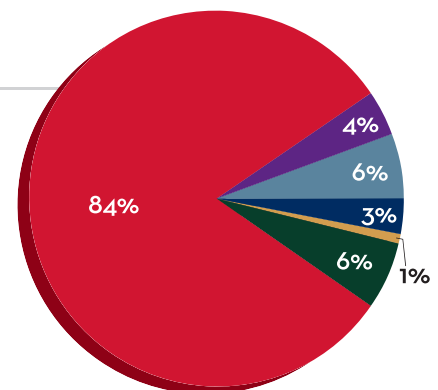
### YEAR IN SCHOOL

- Freshman
- Sophomore
- Junior
- Senior



### RACE / ETHNICITY

- Asian / Pacific Islander
- Black / African American
- Indian or Native American
- Hispanic / Latino
- White / Caucasian
- Other



CONTINUED ON PAGE 27 >

# ALCOHOL, HAZING AND SEXUAL ASSAULT

## COURSE IMPACT - SOCIAL CONCERN AND RESPONSIBILITY

Data reported as the mean response to each question on a 7-point scale (1 = not at all, 7 = completely).

To what degree did GreekLifeEdu:

	MEAN	SCALE %		
		1, 2, or 3	4	5, 6, or 7
Prepare you to identify the signs of alcohol poisoning .....	4.8	20%	26%	54%
Prepare you to help someone who may have alcohol poisoning .....	4.84	19%	28%	53%
Prepare you to intervene when a friend is drinking too much .....	4.83	19%	28%	52%
Teach you about the legal consequences of hosting a party with alcohol .....	4.72	20%	29%	51%
Prepare you to host a safe party .....	4.82	19%	29%	52%
Prepare you to prevent one of your party guests from becoming intoxicated .....	4.75	21%	29%	50%

Data reported as the mean response to each question on a 7-point scale (1 = never, 7 = always).

During the past two weeks, to what degree did the following happen to you when drinking or as a result of your prior drinking?

	MEAN	SCALE %		
		1, 2, or 3	4	5, 6, or 7
Drove after drinking 4 or more drinks.....	1.25	93%	4%	2%
Forgot where I went or what I did (blacked out).....	1.87	86%	8%	7%
Had a hangover.....	2.17	78%	11%	11%
Experienced negative academic consequences (missed a class, got behind in school work, performed poorly on an assignment/test) .....	1.7	89%	7%	4%

# Chi Phi Changing Attitudes About Alcohol, Hazing and Sexual Assault

< CONTINUED FROM PAGE 25

Fifty-three percent (53%) of the Chi Phi members who participated said GreekLifeEdu™ prepared them to help in situations where they identified an alcohol overdose. After completing the course, 61% of the students reported that they intend to “support the choice not to drink,” and 56% reported their intent to better inform themselves about hazing laws and policies.

As a result of this program, members also reported a significant degree of follow-through on certain intended protective behaviors, including setting a personal limit on the number of alcoholic drinks they will have per occasion. In fact, more than half (54%) indicate they intend to set a drinking limit while 39% indicate that when they do drink, they do limit the number of drinks they consume in order to reduce their risk.

“We have a responsibility to help ensure the safety of our students,” stated **Michael Azarian, Psi Delta 1997**, Executive Director. “Instead of allowing these issues to affect our chapters, we are trying to get out ahead of the problem, educating members about the dangers associated with high-risk drinking, hazing and sexual assault and providing appropriate prevention programs and resources to students.”

GreekLifeEdu™ provides an experience that impacts both individual behavior and community culture. While it relies on evidence-based prevention methods,

learner-centered pedagogy and up-to-date science-based content, GreekLifeEdu™ provides each member with a carefully customized user experience that inspires members to reflect on and consider changing their behaviors. Using instant message chats and YouTube-like videos, the course communicates in ways that make sense to today’s millennial members. It presents content in entertaining formats devised to increase student engagement and interest.

“We’ve found this to be an effective means to capture the attention of our students and get them thinking about so many important issues,” said Azarian. “An online course can’t stop all negative behavior, but the data clearly shows that it is having an impact and changing attitudes.”

GreekLifeEdu™ is a project of Outside the Classroom, an organization committed to strengthening the field of alcohol prevention by providing institutions and Greek organizations with the information they need to develop well-informed, cost-effective strategies to reduce alcohol-related risk and prevent harm. Today, the organization’s online educational programs, AlcoholEdu® for College and GreekLifeEdu™, are in use on hundreds of campuses and by 36% of all first-year students at America’s higher education institutions. Outside The Classroom develops its programs under the leadership of national prevention expert William DeJong, PhD.

## Are you interested in leaving a lasting legacy for Chi Phi, your chapter or a favorite program?

### TO ENDOW A SCHOLARSHIP OR EDUCATIONAL ACTIVITY:

1. Contribute today with cash, a check or appreciated securities.
2. Make a multi-year pledge and contribute on a monthly, quarterly or annual basis.
3. Remember the Chi Phi Educational Trust in your estate plans.

Visit [www.chiphi.org](http://www.chiphi.org) or contact Director of Development Fred Maglione at [maglione@chiphi.org](mailto:maglione@chiphi.org) or (404) 231-1824 to discuss - in confidence - options and advantages for your particular situation.



# NEW FIELD EXECUTIVES TO VISIT 40 CHAPTERS THIS SPRING

Two relatively new faces in the William M. Byrd Chi Phi National Headquarters recently started to assist chapters and colonies across the country. New Field Executives **Stephen Dominy, Alpha Tau Omega Fraternity** and **Marcus Powers, Theta Delta 2009**, intend to make at least 40 different chapter/colony visits this Spring.

Dominy, a 2009 graduate from Mercer University, began work on May 26, 2009, and has been busy ever since. With a bachelor's degree in marketing and communications, he has helped many groups improve their recruitment, chapter development and strategic planning. He has also spent time conducting various educational programs including officer teleconferences, a Delta and recruitment webinar, and he facilitated several Regional Leadership Alliances this year.



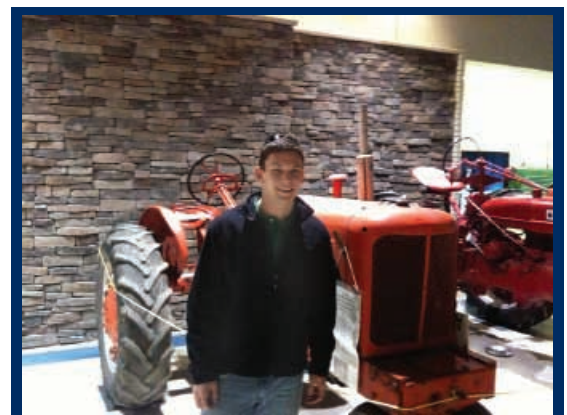
*Field Executive Stephen Dominy took a break from his Chi Phi travel to visit the Liberty Bell in Philadelphia.*

*“Stephen is a great addition to our staff. He is energetic and can have fun in any situation. He has a passion for the fraternal movement and lives his beliefs in what our organizations stand for everyday,” explained **Kim Godwin**, Director of Leadership Education.*

Along with a passion for music and fine arts, Dominy spends much of his time with his family and making friends in the Atlanta area. On the weekends, he often travels to the Macon or Augusta, Georgia to see family and friends.

Dominy is joined by new Field Executive **Marcus Powers**, a 2009 graduate from the University of Florida. With a bachelor's degree in business administration he works with many chapters to improve their finances and chapter operations. He also served on the Expansion Team at Eastern Illinois University.

Besides being an avid reader, Powers wrestled for eight years and is a life-long fan of the Miami Dolphins and Florida Gators. Chi Phis in Florida will see him as he returns to the Sunshine State to visit his chapter in Gainesville, his family in Deerfield Beach and his girlfriend, Lauren, who works in Orlando.



*Marcus Powers, Theta Delta 2009, is Chi Phi's newest Field Executive.*

# Top Annual Donors Driving Excellence



The Gladfelter Circle recognizes the top echelon of alumni supporters who earn a place of distinction through their outstanding annual response to Chi Phi's critical need for private support. Gladfelter Circle donors make leadership gifts that total \$2,000 or more to the Chi Phi Fraternity and/or the Educational Trust each year. The distinctive silver or gold lapel pins they receive in appreciation for their gift recognize Gladfelter Circle members.

"Without the generosity of our Gladfelter Circle donors," commented Trust Chairman **Daniel H. Dozer, Iota 1965**, "we could not provide so many scholarships and leadership programs for our students around the country."

Although Chi Phi and the Chi Phi Educational Trust recognize donors on an academic/fiscal year basis for gifts made between July 1 and June 30, they base Gladfelter Circle membership on calendar year giving.

Chi Phi owes a special thanks to the following men who contributed at the Gladfelter Circle levels in calendar year 2009.



## GLADFELTER CIRCLE

### 2009 Gladfelter Circle with Distinction

#### \$5,000 & Above

C. Scott Akers, Eta 1973  
David R. Beran, Alpha 1976  
Estate of Jack Cook, Alpha 1948  
Ron P. Frank, Nu Delta 1983, Iota Zeta 1989, Delta Zeta 2000  
Robert N. Klaffke, Alpha-Tau 1978  
Ray M. & Mary Elizabeth Lee Foundation  
Robert Loudermilk, Omega 1948, Alpha-Alpha 1950  
Christopher J. Shuler, Alpha Zeta 1984  
James Soderquist, Alpha 1967  
Alfred C. Warrington IV, Theta Delta 1958

### 2009 Gladfelter Circle

#### \$2,000 - \$4,999

Tony F. Afong, Theta Delta 1991  
John Agel, Rho Delta 1972  
Michael Beall, Alpha 1976  
M. Shawn Brown, Alpha Zeta 1997  
David F. Davis, Theta Delta 1973  
Daniel H. Dozer, Iota 1965  
Albert D. Ernest Jr., Alpha 1954  
James B. Graves, Nu 1948  
Sunny Handa, Xi Delta 1989  
John R. Henderson, Alpha 1969  
Cullen A. Hitt, Alpha 2009  
George M. MacDonald, Kappa Delta 1971, Iota Zeta 1989  
Denman K. McNear, Beta 1948  
Joshua Price, Epsilon Delta 1998  
Albert Pickett, Eta 1963  
James H. Rasnake Jr., Eta 1961  
Andrew W. Schultz Sr., Alpha Delta 1960  
Frank M. Thompson, Alpha 1950

To become a member of the 2010 Gladfelter Circle make your gift at [www.chiphi.org](http://www.chiphi.org)

# AN ANONYMOUS \$100,000 GIFT



*By: Fred Maglione, CFRE  
Director of Development*

Preferring to work quietly behind the scenes, a Chi Phi alumnus who wants to remain anonymous recently made a \$100,000 cash pledge payable over the next five years to the Chi Phi Educational Trust. He's already contributed his first year's payment of \$20,000.

## **This gift will provide support in three important areas:**

- ▶ Unrestricted support to use where the need is greatest
- ▶ Support to enhance the educational-qualifying areas of the soon-to-be developed Chi Phi / Greek Life Museum
- ▶ Educational and scholarship support for the donor's home chapter.

"It's not every day we receive a \$100,000 pledge, or for that matter, a \$20,000 check in the mail," said Trust Chairman Daniel H. Dozer, Iota 1965. "It's an extraordinary gesture and one that comes with a great deal of responsibility on Chi Phi's part to administer it properly. We take this responsibility very seriously, and we're committed to honoring this donor's wishes."

When asked why he chose to remain anonymous, the donor remarked, "It's just my way. I want my gift to do good work. Chi Phi is important to me. I want to do my part to pay Chi Phi back for all of the personal and professional success it has brought to my life. I don't need any public recognition to say thank-you."

The \$100,000 pledge came at a time when most nonprofits and fraternal organizations are struggling to secure significant gifts due to the challenge of the nation's economy.

"That is one of the reasons I wanted to step forward now," explained the donor. "Chi Phi and Chi Phi students need help when times are tough. I want my gift to provide some of that help."

He added, "I also hope it will inspire others to make similar gestures. Whether they do it publicly or anonymously, it is important that we give back and pay back Chi Phi in big ways when we can. Our students - our brothers - are doing great things, and they deserve our support."

Several months before learning about this gift, the Grand Council and Chi Phi Educational Trust both adopted a Donor Bill of Rights that outlines the importance Chi Phi places on honoring a donor's intent. Item 6 of the policy specifically states, Chi Phi donors have the right "to be assured that information about their donation is handled with respect and with confidentiality to the extent provided by law and the policies of the Chi Phi Fraternity and Chi Phi Educational Trust". The Trust hopes and intends to follow this principle for many more like-minded anonymous donors in the future.

# JACK COOK LEAVES \$136,334 TO ALPHA CHAPTER

From humble beginnings in Lancaster, Pennsylvania, **Jack P. Cook, Alpha 1948**, served his country in World War II, built a family-business empire in the snack food and packaging industries, and throughout his life he supported the institutions that contributed to his personal and professional development.

Cook entered Chapter Eternal on May 17, 2009, after battling declining health for several years.

Upon his passing, he left a sizeable bequest to the Alpha Chapter Excellence Fund at the Chi Phi Educational Trust. The gift of \$136,334.88 will provide ongoing scholarships and educational training to Chi Phi members at the University of Virginia.

The Alpha Chapter Scholarship Committee intends to establish a specific scholarship in Cook's name when awards are presented this coming fall semester.

Cook spent many years supporting causes and institutions that influenced his life.

Although he started high school at Catonsville High in Catonsville, Maryland in 1938, he left (or was asked to leave) a year later. He enrolled at the Massanutten Military Academy where he flourished and eventually became captain of the Riding Team. There, he met his future wife, Betsy Hess, and life-long friend and fraternity brother **Bill Kitchin, Alpha 1949**.

Years later, Cook and Kitchin would lead an effort at Massanutten to create the "Cook & Kitchin Dining Hall" at the Massanutten Military Academy. He served on the Board of Trustees for the Academy for many years.

After graduating from the Military Academy, he matriculated at the University of Virginia at the tender age of 17 in 1943. When he turned 18, he enrolled in the U.S. Army. Soon, he was off to the Pacific in support of a planned invasion of Japan. By the most reliable account, Cook made it as far as Midway turning around when Japan surrendered in August of 1945.



*In college and later in life, Jack Cook, Alpha 1948, was a tireless supporter of the Chi Phi chapter at the University of Virginia.*

He then returned to Charlottesville to finish his studies at UVA. After graduating, he enrolled at the University of Baltimore School of Law. There, he reunited with his old high school friend, Betsy Barker Hess. They married in 1950 and raised two children, Nancy and Jay (Jack P. Cook, Jr.). Nancy and Jay gave their parents five grandchildren and by last count, two great grandchildren.

When he finished law school, Cook settled in York, Pennsylvania, where he joined his father in the family business called Bon Ton Foods. In 1958, Cook took the reins from his father and built a successful business empire in the York area. He founded C-P Flexible Packaging, and he co-founded Shultz Foods. Cook retired in 1986 when he sold Bon Ton Foods to an investment arm of Merrill Lynch. C-P Flexible Packaging continues to be a successful packaging company today.

"We could always count on Jack to come through for UVA and Chi Phi," said Alpha Alumni Association President **Owen Parry, Alpha 1965**. "Whether it was a chapter house renovation or a scholarship campaign, Jack was always there for us. His bequest will leave a lasting legacy, and it will provide support for Chi Phi men at UVA for generations to come. I think it's a fitting tribute and an extraordinary gift from a man who felt so strongly about Chi Phi."



# MACLEAN LEGACY SOCIETY GROWS



Since the Chi Phi Educational Trust introduced the MacLean Legacy Society one year ago, it has sparked a great deal of interest. Alumni have begun to ask many good questions. Membership is growing, and the impact of this planned giving society will provide institution-changing support for Chi Phi in the future.

“Chi Phi has a history of benefiting from some unplanned gifts that we did not know were out there,” said Educational Trust Chairman **Daniel H. Dozer, Iota 1965**. “As we discuss planned giving with alumni, we realize many are interested, or they already have included Chi Phi in their will. The MacLean Legacy Society gives us an opportunity to recognize these men and thank them before they go on to Chapter Eternal.”

Members of the MacLean Legacy Society have planned for the future of Chi Phi and their chapters by making an estate gift of \$10,000 and higher. These generous alumni and friends are helping Chi Phi build better men, chapters and better communities, now and for generations to come. These individuals belong to the most exclusive of Chi Phi affiliations as they have projected their love for Chi Phi and its mission beyond the horizon of their own mortality.

**As of March 15, 2010, the twenty-eight members of the MacLean Legacy Society include:**

Herman Charles Krannert, Sigma 1912\*  
Herman O. Swanson, Alpha Tau 1914\*  
Gray C. Ramsaur, Theta Delta 1939\*  
Benjamin Blair Morris, Epsilon Delta 1973  
Bates Block, Gamma 1940, Eta 1942\*  
Robert D. Jones\*  
Joseph V. Goeller, Iota Delta 1963  
Dick Gilbert, Rho 1962  
Ed Greenwald, Pi Delta 1971  
George Langford, Alpha 1950  
James B. Hill, Iota Delta 1960  
George Spaur, Epsilon Delta 1925\*  
William D. Nuss, Iota Delta 1968  
Jonathan J. Rawls, Rho Delta 1985  
D. Fort Flowers, Omega 1983

James Soderquist, Alpha 1967  
Joseph E. Jones, Epsilon 1958  
Donald Pearson, Theta Delta 1959  
Brooks R. Caldwell, Epsilon Delta 1925 \*  
J. Darryl McCall, Psi Delta 1982 \*  
Raymond T. Snapp, Iota Delta 1967  
William M. Byrd, Nu 1953 \*  
Christopher J. Shuler, Alpha Zeta 1984  
Ross S. Shoolroy, Iota 1939 \*  
Andrew W. Schultz, Sr., Alpha Delta 1960  
Richard T. Lane, Kappa Delta 1993  
Jack Cook, Alpha 1948 \*  
Randy Loos, Theta Delta 1977  
Senour Reed, Eta 1979

\* deceased

**Do you see a name missing from this list? Have you already included the Chi Phi Educational Trust or your chapter in your estate plan? Become a member of the MacLean Legacy society.**

Contact Director of Development Fred Maglione at (404) 231-1824 or [maglione@chiphil.org](mailto:maglione@chiphil.org) so we can update Chi Phi's records and properly recognize the generosity of loyal Chi Phi alumni and friends.

# FORMER EXECUTIVE DIRECTOR ANNOUNCES LEADERSHIP GIFT TO CHI PHI & THETA DELTA

By: *Fred Maglione, CFRE*  
*Director of Development*

In a Christmas Eve e-mail message to Grand Alpha **Jim Soderquist, Alpha 1967**, former Executive Director and long-time volunteer **Randolph M. "Randy" Loos, Theta Delta 1977** decided to share some news he had kept to himself for some time.

Inspired by the recent progress of the Fraternity and attempts by Soderquist to steer Chi Phi in the right direction, Loos quietly told Soderquist about a provision in his estate plan to provide \$500,000 to the Chi Phi Educational Trust after his death and the death of his wife.

*It was a Christmas surprise no one expected.*



**Then and Now:**  
*Randy Loos, Theta Delta 1977 as he appeared in the February 1979 edition of the Chakett and today.*



"I couldn't believe it," said Soderquist. "I've known Randy for years. He's always been a great brother and dedicated Chi Phi. He's worked with the Fraternity and Trust in a variety of capacities, but he never hinted about the possibility that he might do something so extraordinary for Chi Phi."

A financial advisor and volunteer for many nonprofits, the \$500,000 planned gift will support two important programs in equal parts. Half of his gift will provide unrestricted support to the Theta Delta Chapter Excellence Fund to support the scholarship and educational programs of the Theta Delta Chapter at the University of Florida. The other half will provide unrestricted support to the Educational Trust.

"I'm not interested in putting conditions or restrictions on my gift," explained Loos, "especially from beyond the grave."

Although he established the provision in his estate plan many years ago, Loos decided the time was right to make his support known. He originally only wanted the leadership of the Fraternity and Trust to know about his gift. Modest in many ways, he did not plan on a public announcement (and certainly not a Chakett article discussing it). However Soderquist and Director of Development Fred Maglione convinced him that Chi Phi needed to announce such a generous gift publicly.

“The fraternity wants to say thank you,” said Soderquist. “We also hope to demonstrate to other alumni that Chi Phi is indeed worthy of such a significant investment.”



*Randy Loos, Theta Delta 1977 and his wife, Jolene, recently announced a provision in their estate plan to provide a \$500,000 gift to the Chi Phi Educational Trust and his Theta Delta Chapter.*

In the history of Chi Phi, only three other individuals have made gifts in excess of \$500,000. Loos joins a small inner circle of true believers who want to see Chi Phi advance.

“I really believe in the work Jim Soderquist is doing,” explained Loos. “He’s not settling for mediocrity, and he’s trying to push our Fraternity into the 21st century and an era of unprecedented success. It’s not an easy task. I wanted Jim to know about my gift, and if it might inspire others to do something similar, all the better.”

The avid Florida Gator football fan has been involved with Chi Phi since he arrived on the University of Florida campus and walked through the Chi Phi House in 1971. As an undergraduate, Loos served as Alpha, Beta and Delta for the chapter which was Chi Phi’s largest at the time. In 1977, he received the Carl J. Gladfelter Leadership Award as Chi Phi’s National Active of the Year.

At the University of Florida, Loos was named the Outstanding 1977 graduate after serving as president of Omicron Delta Kappa leadership honorary and vice president of Florida Blue Key, a prestigious leadership group on campus.

After graduation with a degree in finance, he went to work at rival Florida State University as a research consultant in the Comptroller’s Office. While living in Tallahassee, he served as the Grand Council’s representative from the National Fraternity working with the Nu Delta Chapter.

A year later, the Grand Council named him Chi Phi’s new Executive at a meeting held December 3, 1978, in Atlanta. Loos succeeded National Director **Raymond J. Donohue, Omega 1961**. Loos held the position for a year and a half until he decided to leave the post to begin a career as a financial advisor.

Today, he works with Wells Fargo Financial Advisors in Clearwater, Florida as a Senior Vice President - Investment Officer and a Certified Financial Planner.

By making the details of his gift publicly known, Loos becomes the newest member of the MacLean Legacy Society, a group of Chi Phi supporters who have projected their love for Chi Phi and its mission beyond the horizon of their own mortality.

# SCHOLARSHIPS AVAILABLE

## TO ALL CHI PHI STUDENTS

In August, the Chi Phi Educational Trust intends to award at least \$50,000 worth of academic scholarships to deserving Chi Phi students. Chi Phi members can begin applying for these academic awards by downloading the scholarship application by visiting [www.chiphi.org/Students/StudentNews.aspx?id=54](http://www.chiphi.org/Students/StudentNews.aspx?id=54)

Interested individuals must submit their application by May 1, 2010, for consideration. The Trust will notify all applicants and present scholarships in August.

The Trust awards these scholarships directly to the recipients for them to use for tuition, books, room and board as needed.



“Each year, the pool of applicants gets larger and more competitive,” said Trust Treasurer and Scholarship Committee Chairman **John Hutzler, Kappa Delta 1990**. “The alumni committee goes to great lengths to be as fair as possible with the resources available to it.”

In August 2009, Chi Phi awarded \$53,859 worth of scholarships to 78 deserving young men. These merit-based scholarships award the outstanding academic achievements of undergraduate and graduate student Chi Phi brothers.

## TO CREATE OR ENDOW A SCHOLARSHIP ...

Alumni, friends, chapters, Alumni Associations and Alumni Clubs can endow and name a scholarship with gift of \$25,000 or more to the Educational Trust.

The principles behind a scholarship endowment are fairly simple. An endowment provides support in the form of a scholarship forever. The endowment corpus or principal is never spent. It is invested with other Trust funds, and the earnings are used to provide scholarships each year.

Typically, the Trust spends a percentage of the endowment's assets every year on scholarship funding (usually 5%). They reinvest excess earnings back into the endowment corpus to compensate for inflation and recessions in future years. In this way, the “purchasing power” of the endowment remains consistent over time.

Subject to IRS regulations and Trust policy, donors can specify the use of a scholarship they endow and fund.

For example, a donor may decide that he'll contribute \$25,000 to provide an annual scholarship for a student who goes to school in the state of North Carolina. Another donor might decide he wants his scholarship to go to a Chi Phi from any chapter who is attending law school. The options are almost limitless.

Designated scholarships for students from a particular chapter, area of the country or within a specific field of study are all reasonable and permissible restrictions. The donor(s) establishing the scholarship can also specify reasonable criteria to use in awarding the scholarship by asking that the Scholarship Committee look at financial need, grade point average, leadership positions held on campus or in the chapter and more.

“Scholarships provide a wonderful opportunity to help a young man advance his education and career while memorializing the donor and his family,” explained Director of Development **Fred Maglione**.

*To learn more about creating a named scholarship that will recognize and reward students in perpetuity, contact Directors of Development Fred Maglione or Laura Hamilton at (800) 849-1824.*

# Chi Phi's Convene ACROSS THE COUNTRY



Some things change while some things stay the same.

Each year Chi Phi members from around the country gather for the Regional Leadership Alliance ("RLA") to focus on personal development and chapter operations. This year nearly 400 students participated in one of seven different RLAs at Rensselaer Polytechnic Institute, the University of North Florida, the University of California - Davis, the University of Texas, Oglethorpe University, the University of Maryland and the University of Illinois.

This year's RLA program remained true to the general purpose and format of the past. However, the 2009-10 curriculum received an upgrade thanks to participant suggestions from last year, a generous grant from the Chi Phi Educational Trust and a desire on the part of many to institute an Alumni track.

Similar to the last few years, each RLA had an intense Recruitment or Ritual workshop on the Sunday following the main day of programs and presentations. Grand Council member and Heritage and Traditions Counselor **Glenn Johnson, Mu Theta 2004**, presented a Ritual workshop at three sessions while PhiredUp Productions ([www.phiredup.com](http://www.phiredup.com)) conducted four recruitment workshops.

Each RLA also included a section devoted to the Alpha's Academy. Area university administrators, former Chi Phi staff members and past College of Excellence facilitators led the Alpha's Academy and focused on the needs of the chapter president. The executive officers at each site discussed personality types, communication, delegation and other tools they need to succeed during their term of office.

In addition to some of these "traditional" activities, the RLA included new features. Responding to participant feedback, Chi Phi developed RLA programs that examined financial management (personal and chapter) and membership education beyond the six weeks as a new member.

During the chapter management session, members conducted a role-playing activity to engage the audience and give the participants a real example of how to run a meeting using basic parliamentary procedure.

Another section, *Addressing Apathy*, focused on communication and miscommunication between members of the fraternity trying to metaphorically land a jet fighter with only basic instructions.

A new section this year asked teams of participants to build bridges and boats out of straw, tape and nails.

"We added these activities to give our members a few examples of some fun, bonding activities they can do with new members that comply with Chi Phi's Personal Safety Policy," explained Director of Leadership Education **Kim Godwin**.

The biggest change to the RLA program this year was the addition of an Alumni Education Track. Alumni track topics included: alumni association development, networking, event planning, working with a university, basic legal issues, finances in today's economy and more.

The Alumni Education Track developed in part from a grant from the Chi Phi Educational Trust. This grant's intent is to begin the process of developing a total membership education program looking at how Chi Phi educates and supports a member from the date they join until the day they die.

"We are already planning to develop more programs for next year," said Godwin, "so if you are interested in presenting in your region, please let us know."

Eighty-nine students attended the November session at the Rensselaer Polytechnic Institute. Satisfaction surveys from the Spring session were not yet compiled by the time the *Chakett* went to print. However, participants gave the November RLA a score of 4.30 out of 5.0. The Alpha Academy section had the highest score with 4.56 followed by the Member Education session at 4.25.

## 2009-10 REGIONAL LEADERSHIP ALLIANCE SCHEDULE

The chapters below hosted a Regional Leadership Academy:

### CHAPTER HOST

THETA  
OMEGA ZETA  
SIGMA DELTA  
NU  
RHO DELTA  
ETA THETA  
SIGMA COLONY

### DATE

NOVEMBER 6-8  
FEBRUARY 5 - 7  
FEBRUARY 5 - 7  
FEBRUARY 19 - 21  
FEBRUARY 19 - 21  
FEBRUARY 26 - 28  
FEBRUARY 26 - 28

### LOCATION

RENSELAER POLYTECHNIC INSTITUTE  
UNIVERSITY OF NORTH FLORIDA  
UNIVERSITY OF CALIFORNIA - DAVIS  
UNIVERSITY OF TEXAS - AUSTIN  
OGLETHORPE UNIVERSITY  
UNIVERSITY OF MARYLAND  
UNIVERSITY OF ILLINOIS

# COLLEGIATE HOUSING & CONGRESS:

## WHAT EVERY CHI PHI

# Needs to Know



One out of every eight college students in the United States live in a fraternity or sorority house. Greek organizations provide housing for more than 250,000 students each year at no cost to their host institutions. It is a \$3 billion dollar industry.

Yet, around the country fraternity houses are deteriorating. Aging facilities built years ago are not equipped with modern safety features or amenities. Life safety upgrades are the top challenge facing fraternal housing.

Unfortunately, a quirk in the tax laws allows colleges and universities to use charitable contributions to build and maintain student housing. However, other not-for-profit entities, like fraternity house corporations, are not permitted to spend tax deductible contributions the same way.

"It's one of the most misunderstood provisions of tax law," explained Grand Eta **George MacDonald, Kappa Delta 1971, Iota Zeta 1989**. "A donor can get a tax deduction if he contributes to a college for a residence hall, a boarding house for abused women, a facility housing orphans and other nonprofit living environments, but they don't get the same deduction if they contribute to a fraternity house."

Chi Phi, along with many other national fraternities and sororities, hopes the United States Congress will change this disparity and pass the Collegiate Housing and Infrastructure Act of 2009 (H.R. 1547 / S. 781) ("CHIA").

CHIA erases this disparity and would allow 501(c)(3) foundations like the Chi Phi Educational Trust to use tax deductible contributions for the same purposes that a college or university could use such contributions.

As of November 30, 2009, there were 173 sponsors of the CHIA bill in the House of Representatives and 24 sponsors in the Senate. Despite strong, bi-partisan support, CHIA has not yet become law.



*George MacDonald, Kappa Delta 1971, Iota Zeta 1989, Richard Kuerston, Mu Zeta 2002, Michael Azarian, Psi Delta 1997, NIC Executive Director Pete Smithisler and David Ross, Iota Zeta 1996 participated with a delegation of Greek leaders on Capitol Hill to promote the Collegiate Housing and Infrastructure Act of 2009 to Congressmen and Senators in Washington, DC.*



Passing CHIA would make college more affordable with minimal cost to taxpayers by offering a less expensive housing alternative. The Committee on Joint Taxation scored the cost of CHIA at \$148 million over ten years in 2009. CHIA would also encourage new charitable contributions to improve current collegiate housing and result in safer student housing by enabling fraternities and sororities to fund and install modern life-safety equipment like fire sprinklers, smoke detectors and alarm systems.



Each April, the National Interfraternity Conference, the governing body of most national men's fraternal organizations, including Chi Phi, holds its annual meeting in Washington, DC to show their support for CHIA. For the last few years, Executive Director **Michael Azarian, Psi Delta 1997** and Associate Executive Director **Richard Kuerston, Mu Zeta 2002** have joined other Greek leaders from around the country to educate the elected representatives and their staffs on Capitol Hill about CHIA and its impact on the nation.

To help promote CHIA and other issues facing the Greek community, an independent group of fraternity and sorority alumni formed Capital Fraternal Caucus ([www.fraternalcaucus.org](http://www.fraternalcaucus.org)) and FratPAC ([www.fratpac.org](http://www.fratpac.org)), a political action committee that has raised nearly \$1 million to support Greek alumni running for office and those who support issues important to the fraternal movement.

When asked about fraternities, House Majority Leader Steny Hoyer (D-MD / Sigma Chi) said, "Fraternities and sororities teach us about leadership, the value of community and the hard work it takes to keep a community strong. That's one of the reasons why the efforts of the Fraternity and Sorority PAC - an organization dedicated to making sure that the values of Greek life have a lasting impact - are so important."

# How Chi Phis Can Promote CHIA



1. Register at [www.fraternalcaucus.org](http://www.fraternalcaucus.org) to receive periodic email updates about the efforts and how you can help.
2. Contact your legislators using the CFC Facebook application. The letter writing tool will prompt you once you enter your address, and it will take less than five minutes to contact your Representative and Senators.
3. Get a letter of support from your college/university. Several university presidents and chancellors have endorsed the legislation, and these endorsements are instrumental in getting Congressional support.





# Reconnect with

# CHIPHI

## April...

**20:**

2010 Fraternity & Sorority Political Action Committee Dinner at Art & Soul in Washington, DC. Tickets cost \$500 per seat. Seating is limited to 250 and is on a first-come, first-served basis. Please contact **Kevin O'Neill** at (757) 207-6002 or [dinner@fratpac.org](mailto:dinner@fratpac.org) for more information.

**23:**

Alpha Zeta Chi Phi Memorial Fund Golf Tournament at the Sunset Hills Country Club in Carrollton, Georgia. The four-man scramble begins at 1:00 p.m. For more information, contact **Chris Shuler, Alpha Zeta 1984** at [chris.shuler@vitalsolutions.net](mailto:chris.shuler@vitalsolutions.net).

**30:**

Annual Spring Golf Outing and Alumni Banquet for Rho Iota Kappa, beginning at 6:00 p.m. at the Beaver River Golf Club in Richmond, Rhode Island. For more information and to register, visit <http://chiphiri.com>.

## May...

**1:**

Rho Iota Kappa Cocktail Reception & Dinner Dance at the Providence Marriot. For more information and to register, visit <http://chiphiri.com>.

## June...

**5:**

Alpha Chapter and the Alpha House Association host a cocktail reception at 161 Rugby Road from 2:00 - 4:00 p.m. in conjunction with Virginia Reunions 2010.

## July...

**16-18:**

145th Chi Phi Congress in Boston at the Hyatt Regency Boston. For more information, visit <http://www.chiphi.org/Students/StudentCongress.aspx>.

**23:**

Alpha Zeta Hackerfest 2010 at the Laurel Springs Golf Club in Suwannee, Georgia. The two-man scramble begins at 1:00 p.m. A BBQ and After Party follows. For more information, contact **Chris Shuler, Alpha Zeta 1984** at [chris.shuler@vitalsolutions.net](mailto:chris.shuler@vitalsolutions.net).

**31:**

Alpha Theta Chi Alumni Association Annual Meeting and Chi Phi Golf Outing in the Omaha Area.

## October . . .

**29-31:** Mu Theta Alumni Homecoming Weekend &

Banquet. Plans include a Meet and Greet, tailgate, Banquet, golf and the Mu Theta Alumni Association business meeting.

Do you have news or important dates want to share about your chapter or Alumni Association? Send all relevant information to Director of Development **Laura Hamilton** at [hamilton@chiphiri.org](mailto:hamilton@chiphiri.org). **SEND YOUR INFORMATION BY SEPTEMBER 1, 2010, TO BE INCLUDED IN THE FALL CHAKETT.**



# Three Pre-Congress Educational Opportunities Available to all Chi Phis

Chi Phi encourages student and alumni leaders to come to Congress early to take advantage of educational programming that focuses on Alumni Education, Ritual Education and Undergraduate Education. Thanks to a generous grant from the Chi Phi Educational Trust, the Fraternity will produce three different sessions for Chi Phi members on Friday, July 16, 2010, from 9:00 a.m. until 12:00 noon at the Hyatt Regency in Boston, Massachusetts.

The Alumni Education Track will focus on alumni association, housing corporation and personal development for alumni participants. The Ritual Education Track, led by Heritage and Traditions Counselor **Glenn Johnson, Mu Theta 2004**, will teach members how to perform the Ritual properly and the meanings behind them. The final track will focus on Undergraduate Education and feature chapter management, finances, leadership development and much more. To learn more about each program, visit the Congress section of the Chi Phi website at [www.chiphi.org](http://www.chiphi.org).

## Chi Phi to Converge on Boston for the 145th Congress

For the 145th time, Chi Phi leaders will convene to set policy and direction for the Chi Phi Fraternity at the annual Chi Phi Congress from **July 16 - 18, 2010**.

During the three-day session, participants are expected to adopt Chi Phi's 2011 budget, elect a Grand Alpha-Elect, recognize 2010 award winners and consider other legislation.

Every Chapter must send two voting delegates. Every Colony must send one voting delegate and one non-voting delegate. Every registered Alumni Association and Chi Phi Club is entitled to one voting delegate. House Corporations are encouraged to attend, but they have no voting rights.

Additional non-voting or alternate delegates are also welcome to attend.

All delegates, both alumni and undergraduate, should register for Congress by **June 1, 2010**. In addition to registering for Congress, attendees must make a hotel reservation at the Congress hotel.

# The 145th CHI PHI CONGRESS

**LOCATION:** .....Hyatt Regency Boston  
Boston, Massachusetts

**DATES:** .....July 16-18, 2010

**ROOMS:** \$169 for double occupancy. Reservations must be made by 5:00 p.m. (EDT) on June 28, 2010, to 800-233-1234. Mention "Chi Phi." Please call (do not reserve online) to ensure that you receive the convention rate.

**REGISTRATION:** All Chapter, Colony, Club and Alumni Association delegates must register online at [www.chiphi.org](http://www.chiphi.org) for the 145th Chi Phi Congress. The National Headquarters will automatically bill each Chapter and Colony for two delegate registrations. Alumni Association delegates and additional Chapter/Colony delegates must satisfy all registration fees prior to being seated.

**CHECK-IN:** 10:00 a.m. - 1:00 p.m. on July 16, 2010, at the Hyatt Regency Boston

**TRAVEL:** Arriving flights should arrive no later than 11:00 a.m. Other sessions, activities and banquets will convene throughout Saturday. Congress will conclude by 12:00 p.m. on Sunday, July 18, 2010. Departing flights should be made for 3:00 p.m. or later. If you are flying to Boston, you should purchase your plane tickets as early as possible, at least 21 days in advance for the best fare. There is also a rail system in the Boston region that should be considered for attendees traveling shorter distances. Parking and driving in Boston is not recommended.

**ATTIRE:** Congressional sessions, banquets and activities are business attire (coat and tie) events. Spouses and guests should contact **Kim Godwin** or **Patty Fisher** for more information on attire.

# XΦ

# Alumni News & Notes

September 16, 2009 through February 15, 2010

## 1930s

**John H. Saemann, Kappa 1938** retired in 1973. He and his wife, Patricia, live in Union Grove, Wisconsin and have three grown children.

## 1940s

**James Andrews, Kappa 1948** retired in 1995 when doctors told him he had asthma and pneumonia and only two years to live. He is now healthy and has been on vacation ever since. Last year he obtained seven patents relative to fly-fishing and one registered trademark. Andrews lives in Austin, Colorado.

## 1950s

**Frank Thompson, Alpha 1950**, wrote: "It was great having dinner with Dr. Jim Soderquist and his staff a few weeks ago here in Florida. He's the ideal man for that tough job, and I wish him all the luck in the world. The 'travel bug' within me never seems to stop biting me, so this past June, Jeannine and I took a 12-day trip to Alaska and the Yukon Territory. Then, in August, we went to Europe for a 15-day river cruise on the Rhine and Danube Rivers starting in Amsterdam, the Netherlands and ending in Budapest, Hungary."

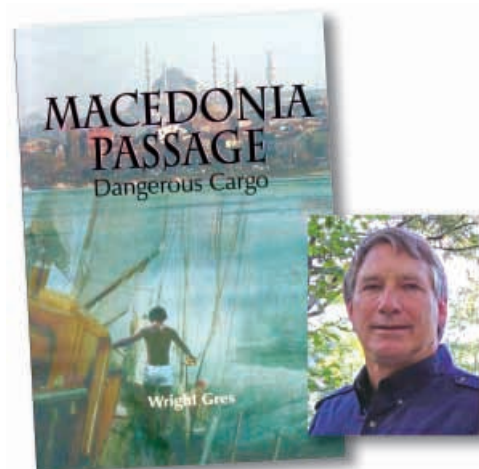
**Arnold R. Bertelsen, Kappa 1952** is retired and spends the winter months on Pine Island in Bokeelia, Florida with his wife, Ginny. The remainder of the year they live in Hudson, Wisconsin.

**William Cook, Kappa 1954** is president of the Thoracic Surgical Association and a trustee of the Massachusetts Medical Association. He and his wife, Cindy, live in North Andover, Massachusetts and have four children.

## 1960s

**Jerry W. McGrane, Kappa 1962** and his wife, Diane, have three children: Peggy, Michael, and Jim. They live in Fort Pierce, Florida where Jerry is president of AWM Construction.

**Wright Gres, Theta Delta 1969** recently published "*Macedonia Passage*," a modern day sailing adventure with a touch of Balkan politics and a hint of romance. A six-month voyage on a stays'lschooner and a cruise on the Mediterranean and Aegean Seas became the basis for the book. Copies can be ordered from RiverHouse Books by visiting [www.theriverhousebooks.com](http://www.theriverhousebooks.com) or calling 800-247-6553. Gres is happy to autograph a copy of the book for any Chi Phi brother.



[www.chiphi.org](http://www.chiphi.org)

## 1970s

**Scott Parker, Pi Delta 1970** and his daughter own "Scully's Signature," a restaurant in Asheville, North Carolina. Scully's Signature sits in the heart of downtown Asheville among boutiques, antiques and art galleries. They serve fresh, local, all-natural foods which are prepared daily. Guests can enjoy a full bar with local and organic beers on their front patio which compliments their New Orleans-style private courtyard in the back. Learn more at [www.scullysasheville.com/index.html](http://www.scullysasheville.com/index.html).

**Blair Westlake, Eta Delta '76**, was inducted into the Video Hall of Fame on December 7, 2009, in Beverly Hills, California. During the ceremony, Westlake was introduced by Sid Sheinberg, former President of MCA/Universal Studios, where Westlake was employed for 20 years. Westlake is now a Corporate Vice President, Media & Entertainment Group, at Microsoft Corporation, based at its headquarters in Redmond, WA.



## 1980s

**Mark R. Paschal, Kappa 1984** is president of Progressive Building Maintenance and owner of Bay Street Pub. He lives in Milwaukee, Wisconsin.

**Terence J. Brown, Kappa 1988** of Wauwatosa, Wisconsin is president of St. Anthony School of Milwaukee. He and his wife, Julie, have three children: Peter, Moira, and Margaret.

**Andrew T. Schrimsher, Tau 1988** recently launched a web design, data storage and web hosting business, AlabamaHosting.net, to provide affordable web services for small businesses.

## 1990s

**Corey Chisnell, Kappa 1992** is Vice President of BMO Capital Markets Corporation in Chicago, Ill. He and his wife, Colleen, have two children, 9-year old Caroline and 8-year-old Connor. They live in Hinsdale, Illinois.



## 2000s

With his wife, Holly, **Matt Graham, Alpha 2000** welcomed his first child, Henry Samuel Graham into the world on January 28, 2009.

**Andrew Z. Selos, Epsilon Theta 2002**, has been married for almost three years to Brandy Selos. They do not yet have children. He is currently a critical care nurse at WakeMed in Raleigh, NC., and he was recently admitted to the Nurse Anesthesia program at Raleigh School of Nurse Anesthesia.

Rachel Dyan Prindle and **Loren D. Bradford, Lambda Zeta 2005**, married on September 5, 2009, in San Antonio, TX.

**Robert Kortas, Pi Delta 2005** is engaged to Miss Laney Martin.

**Anthony Mangano, Lambda Theta 2008** recently launched an exciting new business venture in the Boston area. His company, called AM's Boston Tours, offers free guided walking tours of historic Boston, Massachusetts covering the main sites of the Freedom Trail and more. These tours, which last between an hour and a half to two hours are supported by voluntary tips. It is a budget-friendly way for everyone to see the sites and provide for an excellent introduction to the city. Check them out at [www.amsbostontours.com](http://www.amsbostontours.com).

**Brian A. Spiro, Delta Zeta 2008** and Samantha Dix married on August 8, 2009.



# CHAPTER ETERNAL

September 16, 2009 through February 15, 2010

Has a Chi Phi you know entered the Chapter Eternal?

If so, please report this information to the Chi Phi National Office at [fisher@chiphil.org](mailto:fisher@chiphil.org)

## ALPHA

### University of Virginia

Rozier C. Bayly Jr., Alpha 1939  
Temple Coupland, Alpha 1932  
Julian N. Dashiell, Alpha 1944  
William R. Evans, Alpha 1944, died in November 2008.  
Harold L. McGeorge Jr., Alpha 1941  
C. Brooks Mehaffey, Alpha 1950  
John K. Partridge, Alpha 1977  
Robert B. Rutherford Jr., Alpha 1965  
Bruce R. Wilson, Alpha 1965  
Thomas B. Worsley, Alpha 1933  
Robert S. Young, Alpha 1951

## BETA

### Massachusetts Institute of Technology

Edwin Hebb Jr., Beta 1948, died on September 17, 2009.

## GAMMA

### Emory University

Charles J. McCarthy Jr., Gamma 1962, died on January 2, 2009.  
Samuel C. McCutchen, Gamma 1961

## DELTA

### Rutgers University

Ranney G. Adams Jr., Delta 1939, died on December 2, 2009.  
James B. Smith, Delta 1964 died on February 2, 2010.

## EPSILON

### Hampden-Sydney College

John R. Booth, Epsilon 1950, died on January 7, 2007.  
Joseph S. Gillespie Jr., Epsilon 1954, died on June 29, 2009.  
Otho L. Gladding III, Epsilon 1958, died on June 15, 2009.  
Preston Sawyer Jr., Epsilon 1950, died on March 30, 2009.

## ZETA

### Franklin & Marshall College

John B. Lange, Zeta 1951, died on October 24, 2009.  
John F. Sener III, Zeta 1944

## ETA

### University of Georgia

John B. Harris Jr., Eta 1940  
Longtime lawyer, retail business owner and certified addiction counselor, Henry Troutman, Jr., Eta 1945, died October 22, 2009, from complications of cancer. A World War II veteran and graduate of the University of Georgia, Troutman practiced law for nearly three decades. In 1998, the Georgia Bar Association awarded Troutman its Lifetime Achievement Award for community service. He founded the Lawyers Assistance Program which helps legal professionals deal with alcohol, drug and mental health issues.

## IOTA

### Ohio State University

James D. Miessler, Iota 1967, died on February 8, 2009.  
Raymond E. Schentur, Iota 1948, died on January 17, 2008.

## KAPPA

### University of Wisconsin

Carl H. Rickmeier, Kappa 1958, died in 1994.

## LAMBDA

### University of California, Berkeley

Peter L. Swartz, Lambda 1943, died October 23, 2009.

## MU

### Stevens Institute of Technology

William R. Forlifer, Mu 1947

## NU

### University of Texas

Lynn R. Cooper, Nu 1966, died on October 11, 2009.  
Stephen A. Floyd, Nu 1984, Sigma Delta 1986, died November 10, 2009.  
Kenneth W. Tumlinson, Nu 1967, died on November 28, 2009, from Glioblastoma Multiforme.

## OMICRON

### Yale University

Hubbard Lynch Jr., Omicron 1955, died several years ago.

## RHO

### Lafayette College

Lloyd M. Felmly MD, Rho 1941, died on September 3, 2009.

Newell H. Golden Jr., Rho 1953

John A. Marr, Rho 1982

## SIGMA

### University of Illinois

Edward C. Beach, Sigma 1953, died on March 10, 2009.

Alfred C. Herbster, Sigma 1960, died on August 29, 2004 after a long illness from kidney disease.

Robert W. Howard, Sigma 1951, Pi 1951, died on September 8, 2009.

## TAU

### University of Alabama

John H. Bowden, Tau 1964, died July 13, 2009.

Lewis P. Gray Jr., Tau 1950, died August 14, 2009.

## CHI

### Dartmouth College

William C. Burr, Chi 1943, died May 30, 2009, at the age of 87.

## PSI

### Lehigh University



Nathan Howard Gowing Jr., Psi 1938, a longtime resident of Waynesboro, died on December 1, 2009, at Brightview at Baldwin Park in

Staunton at the age of 93. He was born Sept. 27, 1916, in Syracuse, N.Y., and he grew up in Portsmouth, then Norfolk. After one year at the Norfolk Division of William and Mary (now Old Dominion University,) he transferred to Lehigh University in Bethlehem, PA. He served for one year as president of his Chi Phi fraternity before graduating in 1938 with a B.S. in industrial engineering.

Lowell F. Jett, Psi 1939,

no date given.

E. Steele Malkin, Psi 1939, died on October 23, 2009.

William G. Shoemaker, Psi 1937

## OMEGA

### Georgia Institute of Technology

George A. Ewing, Omega 1945, of St. Simons Island, Georgia, died on September 16, 2009. He worked with Fulton Bag and Cotton Mills before joining J.H. Ewing and Sons in 1950. Ewing moved the company into shopping center development. He served as a member, state director and trustee of the International Council of Shopping Centers and was the fourth Georgian to be designated a shopping center manager by the council. He served as director of the Atlanta Real Estate Board, was a life member of the Realtors Million Dollar Club and received the Phoenix Award from the Atlanta Board of Realtors.

Harvey Granger Jr., Omega 1951, died on September 10, 2009.

Louis F. McDonald, Omega 1947, died on November 28, 2008.

Samuel H. Sibley II, Omega 1957

Philip B. Suhr, Omega 1947

Valentine Winkelman Jr., Omega 1943, died on March 21, 2009.

## ALPHA-ALPHA

### University of North Carolina, Chapel Hill

Charles J. Donovan, Alpha-Alfa 1943, Xi 1948, died on July 16, 2009.

Stacy Allen Duncan Jr., Alpha-Alfa 1951, died on May 15, 2009.

Daniel B. Morris Jr., Alpha-Alfa 1950, died, at age 83. He was a Navy veteran of WWII and retired as a civilian engineering supervisor with the Army where he produced military training films and tapes.

Robert H. Parsons, Alpha-Alfa 1945, died on July 26, 2009.

John C. Regan III, Alpha-Alfa 1962, died on June 29, 2009.

## ALPHA-TAU

### University of Michigan

Kurt C. Binder, Alpha-Tau 1944

James E. Burbott, Alpha-Tau 1948

Steven V. Lundgren, Alpha-Tau 1963, died on January, 10, 2005.

Charles L. Smith, Alpha-Tau 1954, died on December 3, 2009.

## ALPHA-CHI

### Ohio Wesleyan University

Winston H. Kirk, Alpha-Chi 1934, died on December 23, 2006.

John E. Stone, Alpha-Chi 1953, died on January 8, 2009.

## ALPHA DELTA

### Pennsylvania State University

John A. Pursley, Alpha Delta 1941

John L. Sigler, Alpha Delta 1948, died on September 14, 2009.

Anthony J. Turchetti, Alpha Delta 1945, died on March 27, 2007.

CONTINUED ON PAGE 45 >

# CHAPTER ETERNAL

September 16, 2009 through February 15, 2010



## BETA DELTA

### University of Washington

Donald K. Dodge, Beta Delta 1951, died on June 21, 2009.

## GAMMA DELTA

### University of Minnesota

Duane A. Johnson, Gamma Delta 1954, died on April 30, 2009.  
Duane R. Johnson, Gamma Delta 1960, died December 28, 2008.

## DELTA DELTA

### University of California, Los Angeles

Donald B. Arries, Delta Delta 1942, died on November 30, 2000.  
William R. Carpenter, Delta Delta 1948, Beta Delta 1948, died in 2002.

## EPSILON DELTA

### Oregon State University

Craig Edward Davies, Epsilon Delta 1965, died May 17, 2009. After receiving his degree from Oregon State University, Davies earned a Masters in Aeronautical Engineering from Pennsylvania State University in 1967 and an MBA from Rollins College in 1984. In 1948, he moved to Seattle to become President and CEO of North American Energy Services. After several other jobs, he began his own consulting business in 1998. With his wife, Kay Sonnenberg, he had three children.  
Thomas A. Ruedy, Epsilon Delta 1978

## ETA DELTA

### University of Southern California

John C. Aldenbrook, Eta Delta 1949, died on March 12, 2008.  
Harold M. Hodges Jr., Eta Delta 1947  
Edward S. Nance, Eta Delta 1940, died in 2007.

## THETA DELTA

### University of Florida

Frank W. Bloechl Jr., Theta Delta 1959, died on February 15, 2009.  
Charles H. Dittmar, Theta Delta 1948, died on September 13, 2009.

Mark Levinson, Theta Delta 1971, died in September 2009.  
Robert R. Parks, Theta Delta 1940, died on October 18, 2009. He was an exceptional clergyman and retired as the 15th Rector of Trinity Parish, Wall Street, New York City.  
Robert C. Wattles, Theta Delta 1973, died January 24, 2010, after a three year battle with lymphoma.  
Alan Dale Willcox, Theta Delta 1969 died in May 2009. Commenting on his death, Wright Gres, Theta Delta 1969 wrote, "Al was one of the smartest guys I've ever known. He was also one of those distractions we were all warned about upon beginning college. At any given time you could find Al hanging around the House, always in a group, discussing and solving the problems of the world. He spent some time in the Army, and a telling of his antics and times in the Army would be worthy of a very entertaining book. Al spent his last days in the Army in the hospital where he was diagnosed with Multiple Sclerosis. After our graduation, when my son came along, it seemed entirely appropriate that he took his first name from my friend, Alan. During those first few months, Al would visit and take the midnight watch allowing me and my wife some sleep which certainly saved our sanity. Years would go by and we

would lose track of Al, but we would always get back together, and it would seem like only weeks since we'd seen him last. Last year, my wife received a call from one of Al's sons, Jessie, who found us and called to let us know that Al was in the hospital and very sick. Who'd have guessed that it would be cancer rather than MS that would ultimately take Al? He had caught up with his family and was happy with the world and his place in it. He told me he probably only had a few weeks left, and he was right. I didn't get to see him again, but I was so happy to be able to talk to him. Perhaps not in the traditional way, but Al was everything to me that a good fraternity brother should be - my best friend. We'll miss him."

## **IOTA DELTA** Indiana University

Mark Abdon James Asmar, Iota Delta 1967, died on September 28, 2009.

David Lee Engel, Iota Delta 1960, died on January 28, 2010. While he attended Indiana University he was a member of the I.U. Singing Hoosiers, and he started the Iota Delta Chapter of Chi Phi.

## **ALPHA THETA CHI** University of Nebraska

Norman H. Hansen, Alpha Theta Chi 1941, died several years ago.

James K. Shafer, Alpha Theta Chi 1935, died on July 29, 2009.

Kenneth N. Sloan, Alpha Theta Chi 1940, died on December 30, 2009.

## **PHI LAMBDA THETA** Bucknell University

David A. Mueller, Phi Lambda Theta 1951, died on September 7, 2007.

# Add Two Lines to Your Will and Make the Ultimate Gift

Making a gift to Chi Phi through a last will and testament is easy. Individuals should instruct their attorney to add a provision to their will naming the Chi Phi Educational Trust as a beneficiary of their estate.

The following language is appropriate:

I give, devise and bequeath [insert dollar amount or percent of estate] to the Chi Phi Educational Trust, (tax id#58-6035103) an unincorporated trust organized and existing under the laws of the State of Georgia, or its successor organization. Said Trust is exempt from federal income tax under Section 501(c)(3) of the Internal Revenue Code and contributions to it are deductible under the provisions of federal income, gift and estate tax laws.

Individuals who have made the Chi Phi Educational Trust a beneficiary of their last will and testament are asked to provide an attorney's letter or copy of this page from their will so Chi Phi can acknowledge the donor's generosity and properly plan for its future.

To learn more or to have a confidential conversation about a planned gift for Chi Phi or your chapter, contact Director of Development, **Fred Maglione** at (800) 849-1824 or [maglione@chiphil.org](mailto:maglione@chiphil.org).



**CHI PHI**

Authentic

**THE CHI PHI FRATERNITY**

1160 Satellite Blvd.  
Suwanee, GA 30024

*Address Service Requested*

NON PROFIT  
US POSTAGE  
**PAID**  
PERMIT 495  
ST LOUIS MO

# 145<sup>th</sup> CHI PHI CONGRESS

Boston, Massachusetts  
**JULY 16 – 18, 2010**

- **CONNECT WITH CHI PHI**
- **SET POLICY**
- **CHART THE FUTURE**
- **HAVE FUN**

Chapter, Alumni Association and Alumni Club leaders and volunteers are invited.  
Learn more and register at [www.chiphi.org/Students/StudentCongress.aspx](http://www.chiphi.org/Students/StudentCongress.aspx).

*Photo: Patrick Pletscher*