

Broader Base Advocated for Trust

Gladfelter Makes Report for Trust To Congress

The Chi Phi Educational Trust supports a wide range of educationally related activities as provided in its indenture and by-laws. Student loans and scholarships represent the largest part of the activity, in addition to support for leadership conferences, improvement in study facilities and promotion of charitable projects, indicating the diversity of the Trust's activities.

A continuous and broad base of contributions from Chi Phi Alumni and friends is necessary for the Trust to retain its nature as a tax-deductible charitable foundation. Future growth is also dependent upon the support received through the annual dues campaign, special gifts and bequests.

Carl Gladfelter, Trust Director, in his report to Congress, is convinced that many alumni do not know fully the extent of the Trust's programs and the good that it accomplishes. He points out that the Trust receives more requests for assistance than it can meet from present earnings from investment income.

The solution lies in broadening the giving base and thus increasing our investment income, according to Brother Gladfelter.

During the past twelve months just over \$6000.00 was received from the Swanson Estate. A much larger amount is anticipated as real estate, which constitutes the estate's principal asset, is liquidated at reasonable prices. At present, litigation is holding up a possible sale of some of the property and it is hoped that the problem can be resolved in the near future and a sizable sum can be realized.

Twenty-nine brothers representing eighteen chapters received grants totaling \$11,450.00. During the previous year, thirteen brothers representing thirteen chapters received grants of \$4,600.00. The 1977 grants were issued to twenty five undergraduates and four graduate students. Of the scholarships granted, \$3,250.00 went to brothers who were directly assisting weak or rebuilding chapters, and to a graduate student Regional Counsellor. A grant of \$750.00 went to a member who did Archives Research for the Council.

The Trust has annual and permanent scholarship obligations as follows:

Krannert—Sigma Chapter	500.00
Dr. Appel—Zeta Chapter	50.00
Alpha-Chi	1,200.00
Denning—Pi Chapter	125.00

With the exception of the Alpha-Chi Scholarships all of the above grants were funded by gifts. The Alpha-Chi Scholarships were partially funded by a one-time gift plus an annual award from the Dr. Milton Brown Estate.

Annual income from investments does not usually support the entire cost of the Scholarship grants. However, over the past few years some gift income has

(Continued on page 4)

Regional Meeting to Coincide With Trust On West Coast

A regional meeting of West Coast chapters will be held concurrently with a mid-year meeting of the Chi Phi Educational Trust, on Feb. 11, 1978.

Both gatherings will be held at the Marriott hotel in Berkeley, California so that chapter delegates can develop an understanding of the workings of the Trust in addition to concentration on chapter operations.

In order to accomplish this objective one hour of the regional meeting is set aside for observation of the Trust meeting.

The meetings will be hosted by Mel Jessup, chairman of the Trustees, which are expected to include former grand officers, alumni and chapter representatives from all four West Coast chapters, Grand Alpha Darryl McCall as well as staff representatives from the national office.

This is believed to be the first gathering of this nature and the first Trust meeting west of Nebraska.

DECEMBER 1977

THE CHI PHI CHAKETT

Birmingham Selected as Site For 1978 Chi Phi Congress



The graceful columns and the kitchen are all that remain of the Gamma chapter house at Eight Fraternity Row on the Emory University campus, following a disastrous fire during the Christmas break (See story on page 3)

August 9-13 Are Dates for Annual Meetings

Although the Tau chapter was chartered in Tuscaloosa in April, 1920, Chi Phis in Alabama waited until 1978 to host a national congress. Birmingham was selected because of its facilities and geographical location which is expected to attract many extra participants from the nearby chapters.

There are even rumors of a motor home caravan coming in from the Midwest. According to an unidentified source the mobile mini-convention is expected to be launched from Erin Drive in Indianapolis, Indiana. For more information contact the Indiana Chi Phi Alumni Association.

Original efforts to secure the Alabama Congress were made by Brother Sterling McDonald, Tau '52 who attended the Asheville (1975) and Columbus, Ohio (1976) conventions prior to his untimely death in November 1976. His dream did become a reality when delegates at last summer's Congress voted for Birmingham in 1978.

Alumni in the convention area have already met twice to lay plans to sponsor special alumni events. Birmingham has much more to offer than is generally known and Tau Chi Phis intend to give visiting National officials and alumni a favorable impression of their city and a

(Continued on page 8)



Theta Chapter Observes Centennial on April 29

Theta chapter at Rensselaer Polytechnic University will observe its 100th anniversary April 29 and the ball has begun to roll with eighteen alumni already committed to attend the weekend, according to Bob Bardagy, Theta '61, who's been contacting the alumni for the past several months.

"Our goal is to have at least one hundred alumni back for the reunion," Bardagy told members in his August newsletter. In December he listed alumni from ten states and representing classes as far back as 1920 who plan to be in Troy for the big occasion.

"Each of these brothers has been requested to get at least three more brothers from the same time period they were in school," Bardagy says.

Cost of the centennial weekend will be \$25 per person.

Bardagy is also asking for contributions "to help get the house up to par" including remodeling of the bar and party room in time for reunion. Last year he raised \$1700 for chapter house renovation and he hopes for a similar amount this year. "After all, the house has weathered a hundred years of Chi Phi chapter activity."

"For those of you unable to contribute last year we'd appreciate a contribution this year," he writes.

Plans for the anniversary reunion date start at 4 p.m. with a cocktail party, followed by dinner in the Student Union McNeil room, after which the house will be the scene for usual Chi Phi band party. An early morning soiree at the Palace Diner or Charlie's Famous will be arranged "for those of you still rarin' to go."

Bates Block Elected Director of National Interfraternity Body

Delegates of the National Interfraternity Conference elected Bates Block, Gamma '40, Eta '42, to one of six director's positions filled each year. There are twelve directors of the NIC which oversee the operation of the association. President, Vice President, Secretary and Treasurer are one-year terms and are selected from among the list of directors.

The NIC was established many years ago for the purpose of sponsoring activities which will benefit the fraternity system as a whole. Its current operations can be divided into three broad areas—an information bureau, service to member fraternities and as a focal point to monitor legislative developments which will have a bearing on the system as a whole. Forty-eight national fraternities are members of the Conference.

Brother Block will attend several director's meetings per year and will participate in the annual meetings held each year during the first few days of December. Chi Phi was last represented on the NIC by Brother Richard C. Ham, Lambda '33.

James T. Laney Becomes 17th President of Emory

Served Eight Years As Dean of Theology School

When the Trustees of Emory University selected a new president for their institution last March, no one had to ask, "Jim who?"

James T. Laney, Omicron '48, had been a vital force on the Emory campus during all eight years he had been dean of the Candler School of Theology. If they did not know him personally, they could easily find students, alumni and colleagues who did.

In some cases rank-and-file faculty members have little contact with their dean, knowing him only through their department chairmen: this was not Jim Laney's style. He has always taken a personal interest in his students, and has known many of them by name and personal situation.

To his faculty, he has been colleague more than administrative head; during many quarters he has taught his own courses (Christian ethics is his special field); he insists that the entire faculty participate with him in decisions about matters of curriculum and standards.

When he became Emory's seventeenth president in September, Dr. Laney (Ph.D.) Yale, 1966 at 38) brought to the job not only a theologian, an ethicist, a scholar, pastor, teacher and administrator, but a man who thinks profoundly about education, as he said before the Middle Georgia Emory Club last spring:

"... Above all, I consider the task (of a university) to be coming to terms with reality, realizing that we live in a modern world that has limits—and that life has limits—and understanding what those limits and necessities are, and appreciating them for what they are—not merely constructions upon our time and our life, but as the development of character and the moral life, as well as intellectual understanding."

Brother Laney was born in Wilson, Arkansas in 1927, spent most of his youth in Memphis. College was interrupted by a stint with the U.S. Army in Korea where he served as a special agent in the Army Counter Intelligence Corps. By 1948 he was back, majoring in economics at Yale on a Southern Regional Scholarship and as a New York Yale Club Scholar. Graduation with honors came in 1950, and four years later he received his B.D. from Yale Divinity School. Again he graduated with honors, winning the Tew prize and the Downs prize. During his time at Yale he had served as chaplain and English master at the Choate School in Connecticut.

From 1955 to 1958 he served as pastor of St. Paul's Methodist church in Cincinnati. In 1959 he returned to Korea, this time with his wife, Berta, and their children, spending five years under the auspices of the Board of Missions of the Methodist church as associate professor at Yonsei University in Seoul.

Entering Yale University in 1964 for the third time in his career, he studied for the doctorate of philosophy.

After graduation he joined the faculty of Vanderbilt University divinity school, entered into community work as president of the Nashville Community Relations Council, eventually receiving the 1969 Distinguished Citizens Award from then all-black Cameron high school.

In 1969 Emory's long-time dean William H. Cannon, had become a bishop and Mack Stokes, later to be elected to the episcopacy, was acting



James T. Laney becomes the new head of Emory University after eight years as dean of the Candler School of Divinity. At right he is shown with his wife, Berta (as they received a trowel from Betty Atwood, wife of the retiring president).

dean. The young (41) professor from Vanderbilt seemed to be a logical choice.

His contribution to the Candler school includes strengthening the faculty, guiding modification of the curriculum to meet needs of present-day clerical and theological needs. And all the while he was writing and speaking. His appearances, under the auspices of endowed lectureships in many cases, allowed him to touch audiences at Rice, Randolph-Macon, Southwestern at Memphis, Wooster College, Yale, DePauw, the University of Chicago, the School of Theology at Claremont, and the American Academy of Religion.

Since 1972 he has been a member of Yale University council committee on the divinity school and the department of religious studies, advisory to the Corporation and the President. He has also served as a consultant to the University of Chicago and Harvard, and recently was elected to the University Senate of the Methodist Church. In 1975 he was a delegate to the meeting of the World Council of Churches in Nairobi, Kenya.

The Laney family lives in Lullwater House: two of the five Laney children are students in Emory College.

"What I would like to see at Emory," he has said, "is the creation of an atmosphere in which all of us, students, teachers, administrators, can take advantage of being what we want to be—active learners and scholars.

"The whole person ought to be



educated, and that means forming relationships with others and with one's own self. This isn't easy, but I think we can do it at Emory."



A twenty-member committee is at work to help the Wisconsin Board of Regents find a successor to President John Weaver who is retiring as head of the Wisconsin University System.

Weaver Years Were Notable For Wisconsin

When John C. Weaver became the fifteenth president of the University of Wisconsin in January, 1971, the country was at the beginning of an awful period of confrontation, violence, cynicism and despair that racked universities while the war in Viet Nam rolled on.

Seventeen months later 7000 protestors would demonstrate in Madison streets and in May 1972 the ROTC building was to incur \$16,000 in damage as a result of fire bombing.

Dr. Weaver, Kappa '36, perceived as his first responsibility to the institution a restoration of its credibility in the eyes of the public and the legislature. His travels in the state carried the message and helped establish stronger ties with alumni around the nation.

But the great shaping force of Weaver's career, according to Peter Thomas in the July 1977 *Wisconsin Alumnus*, was not the demonstrators but the merger of the University of Wisconsin (Madison, Milwaukee, Green Bay, Racine-Kenosha and ten two-year campuses) with Wisconsin State Universities (nine former state teachers' colleges and four two-year centers.)

Debated through the 50s and 60s, the State Senate in 1971 approved the governor's proposal and the proposition reached its emotional peak in October of 1971 when Weaver—in the position of the last president of the former University of Wisconsin and by understanding soon to be named the first president on the newly merged system, addressed the Board of Regents.

"Our present situation must be unique: many a board finds itself at various times disposing of a president, but just name me an instance of a president outlasting his board!"

His address continued with a quotation from John Kenneth Galbraith that "good universities have always been places of contention and dispute; bad universities are as silent and tranquil as the desert."

In November Weaver was installed as the chief executive officer. His administration established benchmarks until Weaver's activity was slowed in midsummer of 1975 by a heart attack.

The list of achievements is significant. Design of a new central administration was accomplished in spite of difficult language in the merger bill.

"Outreach" was the process of combining UW and WSU two-year centers in a unified program completely severed from campus ties within a center system. Extension services and new off-campus study systems were developed.

An academic planning and review system provided educational planning on a statewide basis.

Establishment of "missions" for each institution was regarded as possibly the single most important accomplishment of the Weaver administration.

Maintenance of quality educational levels during periods of fiscal emergency (layoffs of tenured faculty in 1973-74).

Dealing with a governor's request to "phase down" the scope of the university system eventually brought to the new federation a sense of community, and resulted in enrollment ceilings for each institution.

Establishment of a representative faculty group for consultative purposes, helped administrators develop policy.

Maintenance of the excellence of the Madison institution was a legislative concern at the time of the merger discussion.

A key proposal for reduction of fees and tuition for resident students was a Weaver proposition that failed to win acceptance.

Concludes Thomas: "A stroke of historical happenstance threw John Weaver into a job to which he never aspired, and he got it done."

MOVED? CHANGING ADDRESS?

Please save your fraternity 25 cents.

You cost the operating budget just that much when you move without sending your change of address to:

CHI PHI FRATERNITY

3400 PEACHTREE ROAD N.E., SUITE 1041
ATLANTA, GA. 30326

OR PHONE 404-231-2164

Emory Chapter House Lost in Fire

No Lives Lost In Holiday Tragedy

Fire destroyed the chapter house of the Gamma Chapter at Emory University in Atlanta on Tuesday, Dec. 27. Origin of the fire was not determined. Because the campus was deserted during the Christmas holiday no one was in the house and no lives were lost.

A campus landmark since 1930 the antebellum-style structure was valued in excess of \$250,000 and provided housing for thirty occupants.

Because of the campus holiday, the report of the fire was delayed. Although firemen responded promptly the fire was out of hand and was still burning seven hours later.

Thomas Whipple Connally, for whom the Gamma chapter house is named, received his law degree from Emory in 1904 and from Yale in 1905. He served his fraternity by attending twelve consecutive congresses (1900-1911) and by editing fraternity registers and year-books during that period.

Brother Connally founded the trust associations for Eta, Gamma and Omega chapters, served as a trustee of Emory College, and is permanent president of Emory's Class of 1902. He was born July 30, 1881, and died Dec. 30, 1927.

Bates Block, Grand Eta, told The Chakett that members of the Gamma Trust Association will meet with members of the chapter when students return from the Christmas break, and arrangements are being made to use the Emory Women's Club after a temporary stay in the Emory Sheraton.

"The house was well insured," Block

Iota Delta Doubles Size from Mid-March Recruiting Effort

The sons of blue and scarlet have done it again. First and foremost, the Old Chi Phi mansion is still here and this year better than ever before.

In mid-March a unit of about 25 brothers pulled themselves together and in six weeks doubled the size of the house. Impossible they said. Not for Chi Phis. The brothers brought the house together and this year Chi Phi doesn't bend a knee to any damn fraternity.

We didn't waste any time starting off the year with a bang. After everyone got moved back in, registered and settled, fraternity life took off in full speed. We had three open campus parties for purposes of rush, Little Sister rush, and Public Relations.

All the events helped spread the news that the Chi Phis are back and watch out for them. In addition to the parties, we also had several sorority exchanges.

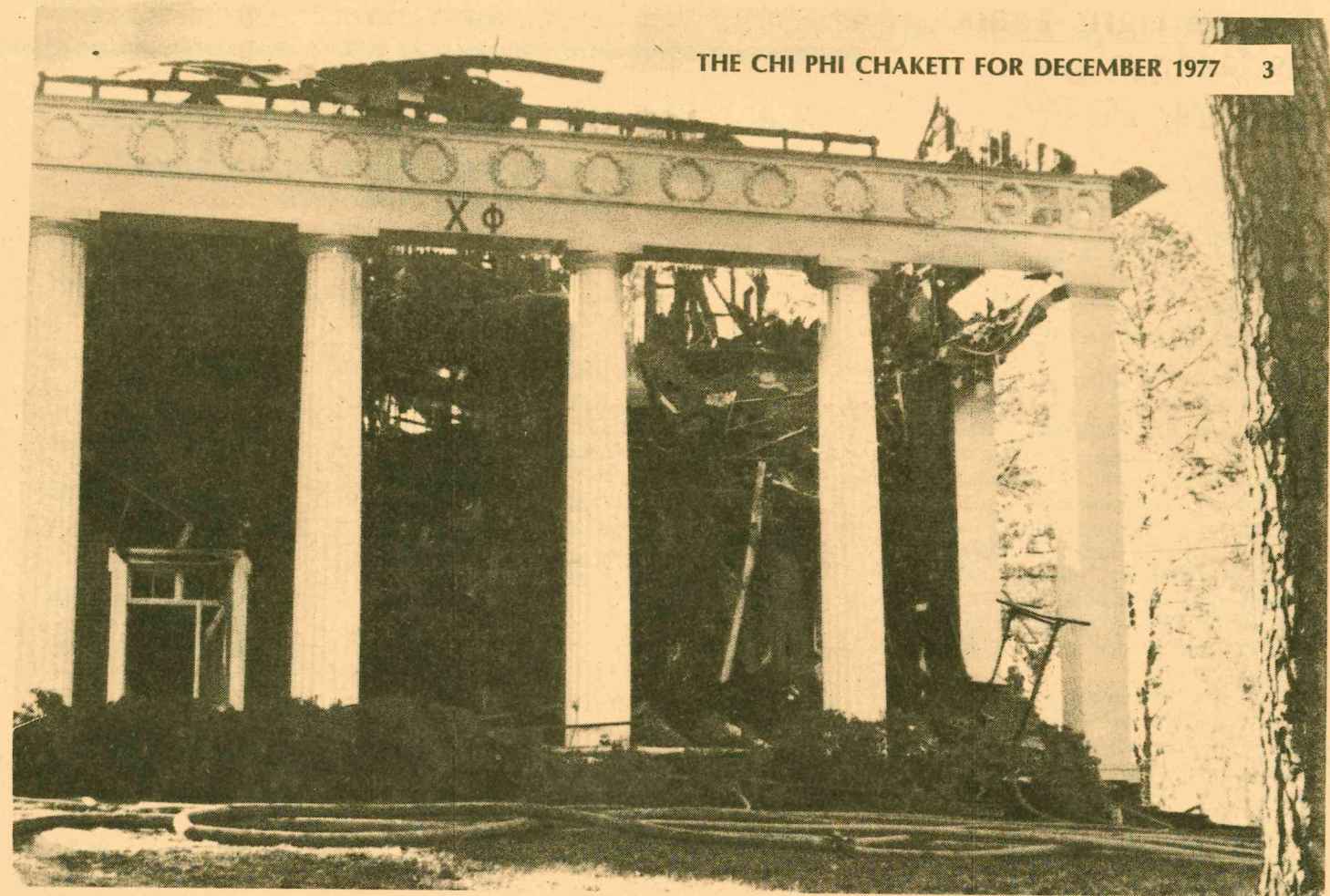
On September 15, our first exchange was a cookout with that great group next door. That's right, the Chi Phis had an exchange with the Sigma Delta Taus, and not only did we have an exchange with them, we were nice to them too!

On September 20, directed by Social Chairman Mike Robison, the brothers set out on "secret mission." It was 5:00 o'clock in the morning when we snook out of the house in the dark and headed for the Sigma Kappa house.

It was the premiere of the infamous Chi Phi surprise breakfast. The first one ever at Indiana University. We set up the tables, cooked the food and then, escorted by House mother Mrs. Pennington, went up to the cold dorm and blasted the girls out of bed with "Sons of Blue and Scarlet."

The next evening, the DZs came over to serenade us. We sang some great Chi Phi oldies back to them, and then they went screaming back down to their house in a panic. Then the Thursday after the serenade we had a supper-kegger with the AGD's. Pledges Snyder and Keen were live DJ's for the evening.

On Monday, September 26, we had the KDs over for wine and cheese and then we went over to the Kappa Delta house for a spaghetti dinner. It was a great time for everyone. Also in September was the TKE's annual bed race, in which the Chi Phis and the AGD's managed to lose the wheels on their bed at the height of suspense and



Reconstruction on the existing site is anticipated by members of the Gamma Trust Association and the Gamma chapter following a fire which gutted the building during the Christmas holiday.

states, "and plans for reconstruction will be pursued immediately." It is anticipated that the present site will be used.

managing not to even place in the final race. We didn't win any great prize, but we lost with class, as the Chi Phi rescue squad carried the bed, the AGD's and the brothers off the track.

Thanks to Brother Scherschel's family, we again had the annual Hayride at their farm. Everyone who went had a great time. October 15 was Homecoming, and in spite of the poor weather, it was a great weekend. IU tied MSU in one of the Hoosier's better moments. Thanks to all those Alumni who make it down to spend Homecoming at the house.

Coming up on the agenda are several more great social events, such as a Surprise Breakfast with the KD's, a "Great Pretenders" party with the AOP's, a haunted house for the kids of the Bloomington area with the Sigma Kappa's and Parents Weekend on the 29th of October.

In sports we are proud to announce that Chi Phi took second in Cream wrestling. Pledge Logan took a second in all campus and Brother Rankin and Pledge Mendoza were cream champs and 2nd all fraternity. Bro Robison came in second in Cream.

And, the Little Sister Football Team are the fraternity champs, and in the finals for all campus. The Little sisters are just fantastic. They were the only cream house to survive the first round. The football teams, A (2-1), B (2-0), and C (0-0-2) are anxiously awaiting the playoffs. In tennis, Brother Pieratt, Alpha, has reached the finals in Men's singles.

This year's council officers are Marty Pieratt, A, Rick Rankin, B, Tim Smith, G, Gary McNutt, D, Scott Harlib, E, and John Baines, Z. Steve Weber is Rush Chairman, Keith Purdue is Pledge Trainer, Ed Paulus is Athletic Chairman, and Mike Robison is the Social Chairman. Bill Dadasis is in Charge of the Little Sisters this year.

Some of this year's 25 man pledge class has already left a mark on old Chi Phi. Mike Wilczynski and Perry Lopez did a fantastic job installing the new living room carpet. Perry and Brad Cangany are assisting on Rush, and Larry Snyder is helping out the Zeta with picture taking and serving as the house DJ. All in all things are going great at Seventeenth and Jordan, and things are going to get even better as the year moves on.—John Baines, Tim Smith,

THE CHI PHI CHAKETT FOR DECEMBER 1977 3

CHAPTER NOTES

Alpha

University of Virginia

Highlight of the Fall occurred Oct. 15 with the chapter house rededication ceremony for the work completed since last Spring. The efforts of the brothers working with more than a half dozen alumni have produced significant improvements to the fifty-year-old structure.

The same workers saw the chapter host the Fall meeting of the Grand Council. Brothers, alumni and grand officers enjoyed a tour of the University rotunda and lawn designed by Thomas Jefferson.

Beta

Massachusetts Institute of Technology

Dan Fischbach's successful rush effort of last year was followed by an excellent achievement this Fall. Ten bids were issued and all accepted to bring house occupancy to 43.

The beautiful chapterhouse on Hereford Street is well maintained by the brothers in cooperation with a well-managed alumni association. Utility expenses have actually declined as a result of renovations to the boiler and installation of some storm windows.

The house should be in good shape for February's initiation banquet which hopefully will attract a record number of alumni.

Gamma

Emory University

The brothers of Gamma unfortunately will be searching for a new residence when they return from Christmas break due to the fire which gutted Connally Hall. The 62 actives will continue to function as a chapter while the house is reconstructed.

Social activities for the fall include several band parties, sorority mixers, Moe's Trains and of course the yearly pledge/brother football game. Of particular interest to alumni is the alumni/active football game November and the alumni cocktail party held in honor of Dr. Jim Laney, president of Emory University.

Many of last year's graduates have gone on to post graduate studies including four to law school, three to med school, two to grad business school and two to dental school; brother C. K. McLemore was named EMORY's Most Valuable Student.

Delta

Rutgers University

The Delta chapter seems to be coming alive with the enthusiasm of brothers now occupying the old house on College Avenue. This new spirit was instrumental in landing the largest pledge class in many years.

The alumni association has a meeting scheduled Jan. 14 at the Rutgers Alumni-Faculty club in New Brunswick in order to set plans for future house improvements.

Epsilon

Hampden-Sydney College

Richmond area alumni sponsored a homecoming dinner Oct. 15 in conjunction with the W & L game.

The event was attended by more than 300 alumni and wives ranging in classes from 1912 to current actives of the class of 1980. Buffet dinner was served from the house which has been used by Epsilon Chi Phis for 50 years.

Zeta

Franklin & Marshall College

Continued prosperity is forecast with the pledging of 25 new men this Fall. The chapter always seems to take a dominant position in campus activities as indicated by the trophy received this Fall for finishing first in intramural competition.

Eta

University of Georgia

Fifty-four actives returned to the Athens campus this Fall whose first order of business was to land almost thirty new pledges. Eta can now expect to better its success of last year highlighted by a chapter grade point average of 2.8. The chapter led the campus Leukemia drive with more than \$5000 raised.

Three Eta brothers are on the nationally ranked Georgia tennis team. Bucky Dilts Eta '77 is now punting for the Denver Broncos.

Theta

Rensselaer Polytechnic Institute

Current actives of Theta can proudly boast on winning the Baker Sports Trophy three years in a row—a feat never before accomplished at R.P.I.

Between studies and sports the brothers somehow find time to work on house improvements, preparing for Theta's 100th anniversary April 29.

The chapter is requesting 100 percent attendance by the 500 alumni of their chapter.

\$22,000 In Scholarship Loans Made During Year

Student Loans Stood At \$47,125 on July 31, 1977

(Continued from page 1)

been used each year to support the Scholarship program. The policy has made it possible to assist many deserving brothers in a period of need as well as give assistance to the Fraternity's expansion and chapter redevelopment program.

Twenty-five brothers representing twenty-one chapters received loans totaling in excess of \$22,000.00. Six of the loans were to brothers attending either Law or Medical School, the balance went to undergraduate members.

Payments on outstanding loans equaled approximately \$11,000.00 of which \$1,400.00 was interest income. Student loans outstanding July 31, 1977 total \$47,125.00 as compared to an outstanding loan balance of \$34,051.00 July 31, 1976.

The effectiveness of the student loan program is illustrated by the fact that the outstanding loan balance has more than doubled since July 1974: \$22,783.00 compared to the '77 balance of \$47,000.00.

The Fraternity receives both direct and indirect benefits as a result of Trust activities. During the past two years, some of the accomplishments include:

1. Mu Chapter—Library/study facility, \$1,000.00.
2. Alpha-Tau—In Memory of Herman Swanson, Library/study facility, \$3,000.00.
3. Tau Chapter—Library/study facility, \$350.00.
4. Lambda Chapter—Library/study facility, \$600.00.
5. Muscular Dystrophy, Chapter fund raising program—10 chapters received awards totaling \$2,000.00. The program is funded by gifts from former Grand Alpha Joe Rice Dockery.
6. Krannert Leadership Conference—an annual management training program for chapter executives, \$5,500.00.
7. Chi Phi Executive Training—Two Scholarships to Indiana University in 1976 and 1977 making it possible for National Director and Assistant National Director to attend management conference.
8. Purchase of Pi Delta mortgage, thereby forestalling foreclosure and permitting Council to restructure chapters financial operation.
9. Loan to Sigma Memorial thereby preventing 1st mortgage foreclosure.
10. Several universities including the University of Southern California and the University of Nebraska were presented grants in conjunction with student housing projects involving chapter houses.

The list is not complete but does serve to illustrate how both the giving program and the investment program do assist the Fraternity.

Every year one member of each chapter is presented a Sparks Memorial Medal for outstanding academic performance. Approximately 1,600 Chi Phis are proud possessors of this time honored award.

Business of the Trust was reviewed at a mid-year meeting held in Detroit and a year-end meeting held in Miami

THE CHI PHI EDUCATIONAL TRUST STATEMENTS OF ASSETS AND FUND BALANCE JULY 31, 1977 AND 1976

	1977	1976
ASSETS		
Cash	\$ 2,963	\$ 3,397
Investments:		
Savings accounts, 5.25%	53,283	87,729
Marketable securities, at quoted market value (cost \$18,335 and \$21,136 for 1977 and 1976, respectively)	37,524	44,787
Other securities, at cost or estimated market value (no quoted market value)	19,000	22,700
Mortgages and notes, net of allowance for uncollectible accounts of \$119,000 and \$103,000 for 1977 and 1976, respectively	172,372	174,169
Total investments	282,179	329,385
Other assets	1,000	70
Total assets	\$286,142	\$332,852
FUND BALANCE:		
Balance at beginning of year	\$332,852	\$291,967
Excess (deficit) of revenues and support over expenses	(46,710)	40,885
Balance at end of year	\$286,142	\$332,852

THE CHI PHI EDUCATIONAL TRUST STATEMENTS OF REVENUES AND SUPPORT AND EXPENSES FOR THE YEARS ENDED JULY 31, 1977 AND 1976

	1977	1976
REVENUE AND SUPPORT:		
Contributions		
Cash	\$ 39,578	\$ 148,277
Other	250	250
39,828	148,527	
Interest and dividends on		
Securities	1,716	1,721
Mortgages and notes receivable	4,367	3,667
Savings accounts	3,443	2,131
9,526	7,519	
Increase (decrease) in unrealized appreciation of securities		
Marketable securities	(3,945)	7,787
Other securities	(3,950)	-
Loss on sale of securities	(2,106)	-
39,353	163,833	
EXPENSES		
Contributions, awards, etc.		
Gifts to institutions	28,700	12,250
Scholarships and awards	11,586	5,614
Leadership school expense	2,574	3,032
42,860	20,896	
Operating expenses		
Salaries	13,010	9,910
Other administrative expenses	13,432	16,874
Provision for uncollectible loans	16,761	1,132
43,203	27,916	
Total expenses	86,063	48,812
EXCESS (DEFICIT) OF REVENUES AND SUPPORT OVER EXPENSES, BEFORE CUMULATIVE EFFECTS OF CHANGES IN ACCOUNTING PRINCIPLES ...	(46,710)	115,021
Cumulative effect of a change in method of recognizing losses on loans to chapter houses	-	(90,000)
Cumulative effect of changing from the cost method to the market value method of carrying marketable securities	-	15,864
EXCESS (DEFICIT) OF REVENUES AND SUPPORT OVER EXPENSES	\$(46,710)	\$ 40,885

Trustees Set Policy, Answer to Governors

Policy is set for the Chi Phi Educational Trust by five trustees who are appointed by the Board of Governors for five-year terms.

Founders of the Trust provided for a smooth transition by staggering terms to mature one each year. In addition there is a check-and-balance in that Trustees are answerable to the Governors for their handling of Trust assets.

Trustees meet several times per year to review operations which have been directed by Brother Carl Gladfelter since 1960. Legal advice is provided by the Grand Eta, Brother Bates Block, Gamma '40, Eta '42, who has handled these responsibilities for an equal period of time. Current Trustees are:

- Melvin R. Jessup, Eta Delta '45, chairman;
- Jack C. Frasier, Eta '43;
- Harold C. Steinke, Kappa '52;
- Archibald R. Updike Jr., Th D '43;
- William R. Kitchen, Alpha '49.

The principal function of the Board of Governors is to annually fill an expiring Trustee position with either a reappointment or a new Trustee. Governors also stand ready to fill positions vacated between terms for various reasons.

Of the seven members of the Board of Governors the Grand Alpha and Grand Eta have permanent positions with the remaining five being elected by Congress delegates for two-year terms. Current Governors include:

- Dr. Thomas A. Gehring, Iota D '60
- Dr. James E. Hartsel, Rho '62;
- Edward O. Wayson, Jr., Psi Delta '72;
- Dana A. Yarger, Kappa '69;
- Darryl McCall, Grand Alpha;
- Bates Block, Grand Eta.

There is one position which is vacant at this time.

Craft Receives First D.S.A. from Marist College in Atlanta

Marist College was established in Atlanta in 1902 as a college preparatory high school offering up to two years college credit. It has since dropped the post high school program but continues in its purpose to provide a quality college-oriented program. The school has probably produced more Chi Phis than any high school in the country.

George S. Craft, Gamma '31, recently received the first Distinguished Alumnus Award offered by the Marist College.

Following his 1927 graduation from Marist College, Brother Craft earned a degree from Emory University where he became a Rhodes Scholar. He then went on to Harvard Business School preparing him for a career in banking which saw him rise to President and Chairman of the Board of Trust Company of Georgia.

His other business accomplishments include membership on the board of directors of The Coca-Cola Company, Genuine Parts, Georgia Power, and Life of Georgia. He is currently retired from Trust Company and devotes much of his time to civic projects in the Atlanta area.

THE CHI PHI CHAKETT VOL. 62, NUMBER 4 DECEMBER 1977

Raymond J. Donohue, Editor
Al Cody, Managing Editor

The Chi Phi Chakett is published in September, December, February and April by the Chi Phi Fraternity, 3400 Peachtree Rd., N.E. Suite 1041, Atlanta, Georgia 30326. Second class postage paid at Kissimmee, Florida 32741. Subscription rate \$5 per year. Single copies \$1.50.
TELEPHONE 404/231-2164

U.S. POSTAL SERVICE
STATEMENT OF OWNERSHIP, MANAGEMENT AND CIRCULATION
(Required by 39 U.S.C. 3685)

1. TITLE OF PUBLICATION
THE CHI PHI CHAKETT

2. NUMBER OF ISSUES PUBLISHED ANNUALLY
4

3. DATE OF NEXT PUBLICATION
9/30/77

4. YEARLY SUBSCRIPTION PRICE
\$5.00

5. OFFICE OF PUBLICATION
3400 Peachtree Rd., N.E. Suite 1041 Atlanta, GA 30326

6. FULL NAME AND COMPLETE ADDRESS OF PUBLISHER, EDITOR, AND MANAGING EDITOR
Raymond J. Donohue, Editor
3400 Peachtree Rd., N.E. Suite 1041 Atlanta, GA 30326

7. OWNER (If owned by a corporation, its name and address must be stated and also immediately thereunder the names and addresses of stockholders owning or holding 1 percent or more of total amount of stock. If not owned by a corporation, the names and addresses of the individual owners must be given. If owned by a partnership or other unincorporated firm, its name and address, as well as that of each individual must be given.)

8. KNOWN BONDHOLDERS, MORTGAGEES, AND OTHER SECURITY HOLDERS OWNING OR HOLDING 1 PERCENT OR MORE OF TOTAL AMOUNT OF BONDS, MORTGAGES OR OTHER SECURITIES OF THIS ISSUE (If any)

9. FOR COMPLETION BY NONPROFIT ORGANIZATIONS AUTHORIZED TO MAIL AT SPECIAL RATES (Section 1103, Title 39, U.S.C.)

10. EXTENT AND NATURE OF CIRCULATION

11. I certify that the statements made by me above are correct and complete.

12. FOR COMPLETION BY PUBLISHER MAILING AT THE REGULAR RATES (Section 1103, Title 39, U.S.C.)

immediately preceding the fraternity's Congress.

Trustee Henry Gildner Sr., Alpha Tau '24, sponsors the Detroit meeting which was attended by all trustees, four members of the Board of Governors, several grand officers and representatives of the Alpha Tau chapter.

The summer meeting was equally well attended.

Gladfelter's report is accompanied by the financial statements prepared by Arthur Anderson & Company under the supervision of Brother Al Warrington,

Theta Delta '58.

For additional information on the Educational Trust see articles on the trustees, governors and the upcoming meeting.

MU ALUMNI BALL

Union Club—Hoboken

APRIL 1, 1978

CHAPTER NOTES

Kappa

University of Wisconsin

Alumni who attended enjoyed one of the best homecoming events in recent years Oct. 22 at the chapterhouse. Brothers were almost crowded out by the many Kappa men who returned to recap memories with others in attendance.

The chapter is currently in outstanding condition, representing all aspects of fraternity life.

Lambda

University of California, Berkeley

Fifteen pledges were added to the Lambda chapter to go with Chi Phi visitors from Eastern chapters who frequently drop in for extended periods.

Recent house improvements include new banisters for the front hall steps and replacement of some loosened plaster in the second floor hallway.

Mu

Stevens Institute of Technology

Last year was a trying year at the Mu chapter as brothers suffered through six weeks of one of the coldest winters of record without heat from a collapsed boiler. Space heaters and perseverance brought the brothers through the crisis which ended on a happy note with a new furnace. Cold weather didn't hurt the grades as the chapter pulled a 3.0 overall average.

Fall activities are going well with 19 brothers and 23 new pledges. A sports championship in tennis is forecast with preparation underway for basketball and volley ball efforts.

Brothers of the chapter performed a great civic service by opening the house to neighbors driven from their homes by a good sized fire this past October. Coffee and blankets were provided during the event which lasted all night.

Xi

Cornell University

Long years of active interest and attention by Xi alums have paid great dividends for the beautiful house on the hill in Ithaca, N. Y. Recent classes have demonstrated equal respect for the physical condition and well being of their chapter house.

The Xi chapter's pledge manual is the most outstanding among our chapters. There are a number of annual events such as the St. Patrick's Day party which make life among Chi Phis at Cornell a special experience.

Pi

Northwestern University

Rush efforts in the past few years have generated seven more brothers than the house could handle this Fall. Arrangements have been made to group outside actives in one section of University dorms.

The major event of the recent past was the successful celebration of 25 years on the Evanston campus. Another event of importance was the establishment of the Denning Scholarship Fund with the Chi Phi Educational Trust. Donations were made by Mr. Denning along with a \$500 contribution from the chapter.

Interest earned will be used for scholarships to deserving Pi brothers. Alumni contributions to the Educational Trust should be designated for the scholarship fund.

Rho

Lafayette College

The Rho chapter proved again its position among the eighteen fraternities on the Easton campus by winning last year's Campus award: The honor goes to the fraternity which generates the most points in competition covering sports, academics, service projects, etc. Undoubtedly the accomplishment has been duly celebrated in the impressive basement rock room.

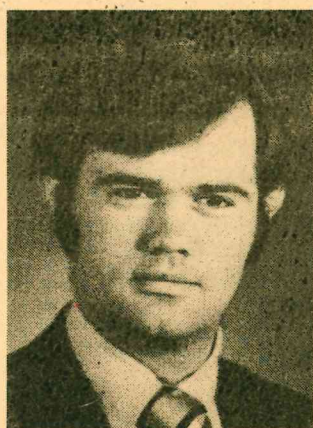
Sigma

University of Illinois

Efforts are underway to find additional mortgage funds for house renovation. Any alumni who can assist in placing the necessary funds is asked to contact the national office.



Burr



Duncan



Kieser



Legvold

National Council Reps Provide Contact with Chapters

Nine national council representatives are active in various parts of the country maintaining close contact with active chapters. The program supplements chapter visits from the national staff and is intended to increase communication.

Each representative is a volunteer alumnus who is required to make at least two official contacts with each of his chapters during the school year. On average each councilor works with three chapters.

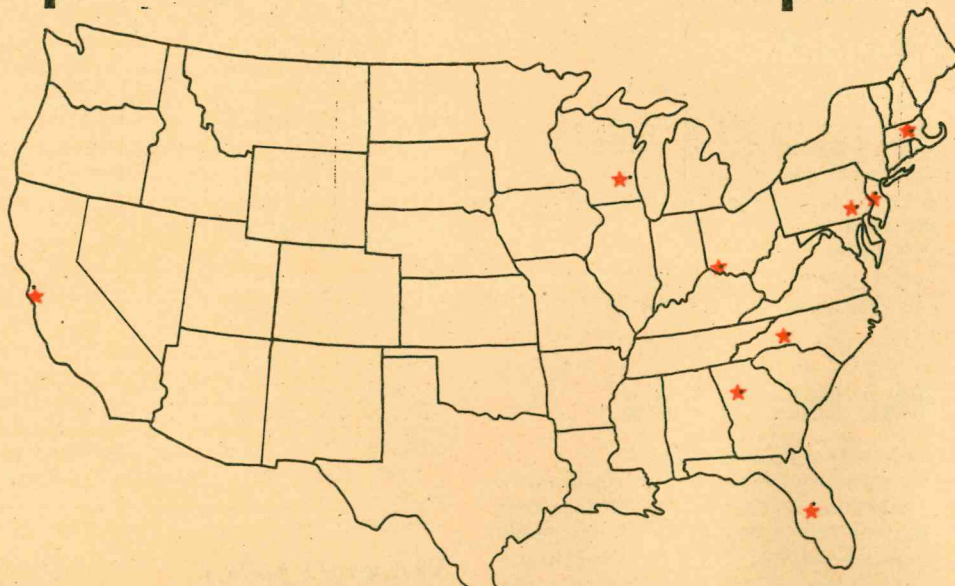
Not every chapter is fortunate enough to be covered with one of the nine representatives. The Council office is attempting to enlist additional volunteers who can develop an understanding of services available from the national office and can devote the necessary time to make the special chapter contacts.

Three active councilors work with chapters in the East and South, two with Midwestern chapters, and one on the West coast.

William C. Arthur III, Zeta '77, lives in Worcester, Mass., located in a triangle formed by his chapter: Beta, Phi and Rho Iota Kappa. Scott is preparing to enter a graduate M.B.A. program in the Boston area.

Fred Kieser Jr., Theta '62, lives and practices law in Metuchen, N. J. Fred is working with both Jersey chapters—Delta Mu and his own chapter in Troy, N. Y.

Blake Eisenhart, Psi '74 has recently completed his master's program at Wharton Graduate School and is employed with Price Waterhouse in Philadelphia. Blake's chapters are all in



eastern Pennsylvania: Zeta, Rho and Psi.

Curtis Burr, Kappa '38, lives in Milwaukee and is retiring from Inland Steel Company after 36 years of service. This is his first year in working with the Pi and Kappa chapters.

James W. Martin, Alpha Chi '32, has been active for many years with national as well as local fraternity matters. He currently works with the three Ohio chapters, Iota, Alpha-Chi and Omicron Delta. In the past, Jim has called on other chapters such as Alpha Delta last year to review matters with the actives.

Paul A. Logvold, Eta Delta '67 is an investment counselor with Lionel Edie & Co., in San Francisco. For some years Paul has maintained a close knowledge of our four West Coast chapters:

Lambda, Eta Delta, Epsilon Delta and Sigma Delta.

Jess Roberts, Theta Delta '51 is in his first year as a regional councilor for the four Florida chapters. He currently resides in Orlando and works in the computer industry.

George E. Duncan Jr., Gamma '70, is a practicing attorney with the firm, Jesser, Ritcher and Duncan in Atlanta and has responsibility for the three youngest chapters in Georgia, Rho Delta, Chi Delta and Alpha Zeta.

J. Rodger Hall, Psi Delta '73, is employed in the purchasing section of Henley Paper Co., Hickory, N. C. Roger works with the Phi Delta chapter in Knoxville, Tenn., as well as his own chapter in Charlotte.

Tau

University of Alabama

Planning for the 1978 Birmingham Congress is well underway for both actives and alumni. Several meetings were held this Fall to develop the program outline.

A new alumni club was formed last Spring to develop a regular newsletter and assist the chapter in rush activities. David Breland is directing the club while finishing his law degree in Tuscaloosa.

Phi

Amherst College

This year's homecoming activities were enjoyable as the rain marathon in New England ceased and Amherst won a close game.

The active chapter hosted a large supply of returning alums following the contest. Events were concluded with a massive party thrown in the tradition of the Phi chapter.

The most popular activity supported by the chapter is the college rugby team. Although Chi Phi is not known as an athletic house, there are also several Phis on the college football team.

In other matters, the chapter has been known to support cultural events such as meetings of the Asian Foreign students.

Chi

Dartmouth College

Although the Chi chapter has been inactive since 1968 the house remains and is occupied by a local fraternity. A meeting was held this past October with officers of the local and National Director Ray Donohue exploring the interest in possible reaffiliation.

Before this could develop an active Chi alumni association would have to be reformed.

The national office would like to set up a meeting in the Boston area around the third week in February. If you would have interest please contact the Atlanta office.

Psi

Lehigh University

Psi brothers and alumni are proud of their university football team which has recently won the Division II NCAA national football championship.

The chapter can boast of its own accomplishments as annual winners in the University-sponsored Charity Bed race.

Omega

Georgia Institute of Technology

Fall quarter got rolling with rush activities like the "green ice" party, a pig roast, daquiri party and a casino-style gambler. All their events and the brothers' efforts resulted in 18 new pledges for the Fall term.

Some notable house improvements have been completed through the efforts of brothers Richard Copelan, Cliff Driver, John Stevens and Sam Harris. A complete set of banister spokes has been developed and installed in the two story spiral staircase. The front door has been refinished to its original light color and has never been more impressive.

Alpha Delta

Pennsylvania State University

Out of 51 fraternities on the State College campus, Alpha Delta finished sixth in scholastics and fourteenth in the athletic computation. Another big accomplishment of last year was the fund raising project for Easter Seals which produced over \$1800 on a very rainy day last Spring.

During the Fall quarter, actives sponsored alumni homecoming by reserving a block of thirty rooms in a nearby motel and providing a bus for easy access to the house and football game.

Alpha-Tau

University of Michigan

Congratulations to alumni for supporting your deserving chapter and produc-

ing one of the most enjoyable newsletters of this year (aside from the financial news). The spirit of alumni comment reminds us all of what our fraternity can mean to a college experience.

Speaking of experiences, the Alpha-Tau house was invaded this Fall by a busload of Kappa actives and their female companions for the UM-Wisconsin football game. Although Wisconsin hopes for national ranking were crushed, all visiting Chi Phis seemed to enjoy the trip.

Alpha-Chi

Ohio Wesleyan

Plans are set to develop a chapter alumni directory as part of a promotion campaign to attract more graduates back to Delaware for visits.

Fall rush was very successful in landing nine pledges since Spring is generally the most productive rush period.

Alpha-Alpha

University of North Carolina

The university student affairs department recently pointed out that the Chi Phi fraternity has provided more graduate school students than any other Carolina fraternity. In the past four years our chapter has produced four times as many as any other house. Law school leads the list, followed by M.B.A. programs, dental, medical and pharmaceutical school.

The novelty of the new party room and patio has not completely worn off the brothers of Chapel Hill. Alpha-Alpha actives and alumni certainly deserve credit for the many years of well managed financial operations.

Epsilon Delta

Oregon State University

Rush efforts of the past four years have provided a steady stream of brothers to occupy the sixty-man chapter house built in the late 50s.

The chapter is functioning exceptionally in all aspects of chapter operation including academics—ending up in the top ten fraternities on campus.

Theta Delta

University of Florida

Founders' Day, Feb. 18, is expected to draw several hundred alumni to Number One Fraternity Row. Plans are being developed to make this one of the biggest gatherings in many years.

Theta Delta is looking for big things in its intramural program after finishing in seventh place last year. The point total was boosted by a championship in volleyball and a fourth place in track.

Some renovation work was completed on the kitchen and house-mothers' apartment.

Iota Delta

Indiana University

An unfortunate post script to an otherwise outstanding Fall quarter was a charge of hazing by university officials over a pledge egg football game. The incident resulted in a three-month suspension from fraternity activities.

For news of chapter activities during this Fall see news article elsewhere in this issue.

Rho Iota Kappa

University of Rhode Island

Plans are underway for roof repair work expected to be completed before winter weather sets in. Studies are being made to move kitchen operation to another part of the lower level. Such a move would end traffic through the current facility during social activities held mostly in the house basement.

Chapter enthusiasm is strong which resulted in a full van of brothers making their trip to Miami for last summer's Congress.

Alpha Theta Chi

University of Nebraska

Biggest news out of Lincoln each year is the outstanding result of the Muscular Dystrophy dance marathon. It is doubtful that any fraternity or sorority chapter is more successful than Alpha Theta Chi in a charity project.

Delta Xi

West Virginia Wesleyan College

Social plans for fall quarter center around Homecoming, the traditional Hells Angel Party and the pledge formal to be held in Clarksburg. Strong alumni participation is expected at each of the events.

Plans are again underway for a Muscular-Dystrophy project which will mark our fifth year in the program.

Mu Delta

Auburn University

Chapter operations have moved to 109 Toomer Street. Plans to purchase the house used during the past few years were abandoned due to structural condition of the facility.

A search effort is underway for a new house to be used by the chapter since our present location is not adequate for a permanent operation.

Some small scale rush activities will be conducted at the beginning of the Winter quarter.

Nu Delta

Florida State University

Nu Delta is expected to come under the management of the Florida Alumni Association during the current school year. While chapter representatives always participate in statewide events, Nu Delta originally owes its existence to several alumni of the Alpha chapter.

Active Kurt Kavenaugh set the winning pace by running 20 miles in the chapter co-sponsored Run-A-Thon for cancer. In all \$2800 was raised for the project.

Xi Delta

Florida Institute of Technology

It was surely the first chapter party at a fire station but Xi Delta earned the privilege through its years of voluntary service to the Melbourne Beach community area.

Pledges of the Alpha-Alpha chapter were treated to all the wonders of the Melbourne-Cocoa Beach area. During their Fall pledge trip, Xi Delta is used to

visiting representatives of other Chi Phi chapters.

Omicron Delta

Miami University, Ohio

During the past year, serious thought has been given to acquiring a larger facility for the chapter. The chapter and house association have managed their finances well over the eight years since chartering produced some modest equity money to use for expansion.

Enrollment and housing conditions on this campus are certainly conducive to support a bigger operation.

Pi Delta

West Virginia University

Brothers of Pi Delta regret to report the passing of Hanibel St. Chi, the Saint Bernard has been a fixture at the house on North Willey Street for many years.

There are currently more brothers occupying the house than has been the case for some time. This trend has been building for the past years enabling certain house improvements to materialize.

Rho Delta

Oglethorpe University

Plans for an on-campus fraternity row are progressing at a painfully slow pace. Alumni of Chi Phi and SAE are seriously working toward permanent housing on campus which should be a great benefit to the fraternity system at Oglethorpe.

Fall rush was successful in pledging fourteen men to carry on traditional operations for Rho Delta.

Sigma Delta

University of California—Davis

Things are off to a good start in this beautiful California city of 18,000 registered bicycles. The flat country and lovely weather provide a perfect setting for the two-wheeled transportation.

Seven new pledges join as returning actives in the 25-man chapter house. Although finances are extremely tight the chapter has managed to keep afloat and has certainly established an independent character.

Phi Delta

University of Tennessee

Brothers of Phi Delta are pleased to announce a change of address to 900 Chi Phi Avenue. The chapter has not changed location, rather the name of the street bordering the house was changed this past summer by the Knoxville City Council. The work and effort of Phi Delta alumnus Stephen L. Hillis, administrative assistant to the mayor, made the change possible.

The year was kicked off with a very productive rush week which ended with nine good men pledging. The week was filled with parties but much hard work, and as climaxed with a band party at the end of the week to celebrate our success.

Though problems with pledge retention have been encountered in the past, we feel more emphasis on the Big Brother system will result in initiating every pledge we signed, which is half the job besides rush.

The weekend of the Georgia Tech football game was highlighted with the annual Phi Delta beef roast over a bonfire. Plans for the remainder of the quarter include participation in Homecoming festivities, lots and lots of parties, a pledge pin hunt, and of course, a banquet and formal dance to celebrate chartering of our chapter.—Joseph W. McReynolds Jr., Gamma.

Chi Delta

Georgia State University

After years of lobbying, actives of Chi Delta were able to win university approval of a relocation of chapter room on a floor with most other fraternities and sororities. For years the chapter has missed the exchanges and social activities which take place during the mid morning class breaks.

Layout and construction of the new room was delayed until early Fall but has since been completed. Seven pledges have joined the ranks of this urban center campus.

Psi Delta

University of North Carolina at Charlotte

This young but enthusiastic chapter has established a Chi Phi chapter golf tournament to take place April 1-2, 1978. The event is expected to become an annual affair which will also see alumni

competition on an individual handicap basis.

Biggest event of this past fall was Psi Delta's seventh anniversary party which was well attended by alumni and national office representatives.

Alpha Zeta

West Georgia College

With thirty brothers and pledges, Alpha Zeta expects to have a strong year both socially and athletically. Football talent of the pledge class is expected to return the championship back to Chi Phi.

The overall condition of Alpha Zeta is as good as it has been in a number of years.

Beta Zeta

Florida Technological University

Well executed summer and fall rush activities produced the largest pledge

class in the young history of Beta Zeta. The chapter is currently occupying two houses side by side adjacent to the Orlando campus.

Plans are now being set for the chapter to host the Spring meeting of the Florida Alumni Association.

Colony

University of North Carolina at Wilmington

Twelve of the initial sixteen pledges have been initiated with the assistance of the Alpha-Alpha and Psi Delta chapters. The new group is now ready to accept their first pledge class since establishing themselves as a Chi Phi colony.

Grand Alpha Darryl McCall has met with the colony on a regular basis since formation this past April. The next step is for the group to find a house to rent and develop a petition to be studied by the nearest five chapters.

ALUMNI NOTES

ETA

Andrew Neighbors '68, Daytona Beach, Fl., Vice-Pres., Office Operations, Heritage Federal Savings & Loan Association writes to National, thanking them for recognizing the birth of his son Andrew with a pledge pin—he will certainly encourage him to take the right road and join Chi Phi.

THETA

R. Michael Smith '60 of Buenos Aires, Argentina was promoted to Vice-President, M. H. Detrick Co., July 1977.

KAPPA

Charles S. Robb, Xi '61 Kappa '61, was successful in his bid for Lieutenant Governor of Virginia. Chuck is the first Democrat from Northern Virginia to succeed in becoming elected.

MU

Charles L. Drake '14, Old Greenwich, Ct., writes "First great grandson was born Jan. 1977."

NU

Kenneth E. Studdard '51 is C.P.A., partner in charge of taxes for firm of Haskins & Sells, New York City.

Frank Towery, Jr. '72, Chicago, Ill., senior vice-president, Davy Crockett Federal Savings Loan has been awarded Senior Real Property Appraiser by the Board of Governors of the International Society of Real Estate Appraisers.

SIGMA

Joseph A. Borysowicz '69 of Chicago, Ill. is attending Illinois State University for a Master's Degree.

TAU

C. Jack Coley, Jr. '56, has been employed for the past year in Saudi Arabia with the Tradco Vulcan Ltd.

PHI

David E. Downs '77, is currently sports information director at Amherst College, Amherst, Mass.

OMEGA

John M. Godfrey '64, received his Ph.D. in economics from the University of Georgia, Dec. 6, 1976 and is currently senior Financial Economist at the Federal Reserve Bank of Atlanta.

William A. Manner III '62, Atlanta, Ga. has been elected a vice-president of Southern Company Services, Inc., a subsidiary of The Southern Company.

Whitney C. O'Keefe '58 has been elected President and Chief Executive Officer of the First National Bank and Trust Co. of Augusta, Ga.

Lawrence W. Robert IV '59 has been elected President and member of the board of directors of Robert and Co. Associates of Atlanta.

ALPHA-ALPHA

William M. Kean '50 is Vice-President, Patrick Programs, Inc. subsidiary of Patrick Petroleum Co., Washington, D.C.

ALPHA-TAU

Dr. Gary E. Leach '72, Los Angeles, Ca. has been appointed fellow in urology at the Mayo Clinic to start, July 1978.

EPSILON DELTA

John S. Ferguson '54, Roselle, Ill. was elected senior Vice-President of Middle West Service Co., a management consulting firm specializing in regulated industries.

THETA DELTA

Curtis H. Stanton '40 is National President Elect of the American Water Works Association. He is former chairman of the Florida Section.

RHO IOTA KAPPA

Robert E. Langevin '65 is National Aviation Coordinator, National Insurance Agency, Nordstrom-Larpenteur Agency, Inc., Ft. Lauderdale, Fl.

DELTA XI

John C. Naugle, Jr. '73 is Process Engineer for National Semiconductor, Danbury, Ct.

RHO DELTA

Joseph W. Dennis '69, Tucker, Ga. was named National Professional of the Year by the United States Professional Tennis Association in Sept. 1977.

ALPHA-PI (Iowa State)

Rev. Christopher Colby '74 of El Paso, Tx. writes, "I am in the midst of the Chihuahua Desert by choice. When I graduated from Seabury-Western Theological Seminary in June, I discovered that the best job I could find was down here. Now I am at the curate of the Church of St. Clement."

PLEDGES

OCTOBER 28, 1977-DECEMBER 20, 1977

DELTA (8)

Paul Prima, Milltown, N. J.
Bob Kowalski, Toms River, N. J.
Edward Kahn, Manassquan, N. J.
Joseph Keeley, Jackson, N. J.
Tom Petro, Mercerville, N. J.
Jeremy Wye, Eatentown, N. J.
John Scott, Rutherford, N. J.
Paul Sechafer, Gladstone, N. J.

ZETA (25)

Mert Thompson, Wellesley, Ma.
Doug Carey, Chevy Chase, Md.
Charles Snyder, Williamsport, Pa.
Brad Varr, West Warwick, R. I.
Steve Perry, North Kingston, R. I.
Scott McLaughlin, Huntington, N. Y.
Peter VonMaur, Ridgewood, N. J.
Jorgen Lorenzen, Scarsdale, N. Y.
Erick Habich, Union, N. J.
Edward Copeland, Villanova, Pa.
Frank Duffy, East Greenwich, R. I.
Alec Sharp, Moorestown, N. J.
Weber Hudson, Grosse Pointe Farms, Mi.

John Stockdale, Lancaster, Pa.
Mark Ferreri, Wallingford, Pa.
Paul Snyder, Bronxville, N. Y.
Bert Brong, Norristown, Pa.
Sam Lermack, Ridgewood, N. J.
Sam Vail, Williamsburg, Va.
Jim Guthrie, State College, Pa.
Tom Holland, Bethlehem, Pa.
Dave Vanderzell, Lancaster, Pa.
Paul Caragians, Hagerstown, Md.
Brett Miller, Wilkes-Barre, Pa.
Chuck Nace, York, Pa.

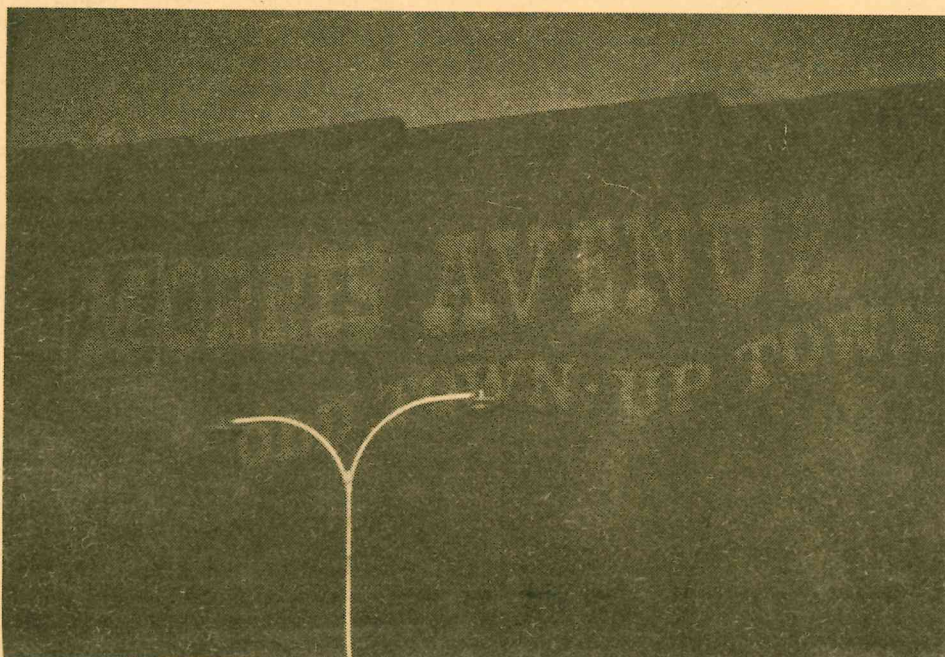
IOTA (5)

David Friedlander, Columbus, Oh.
Darren Coon, Columbus, Oh.
Gregory Cochran, Toledo, Oh.
Michael Burkett, Green Springs, Oh.
Theodore Saker, Columbus, Oh.

PHI (3)

Dan Griffin, Atlanta, Ga.
Craig Foster, Bill Pasco, Calif.

Nebraska, Florida Brothers Lead in M-D Campaign



Chapters Collect \$15,000

For the second year in a row, the brothers at the University of Nebraska and the University of Florida lead participating chapters in collecting the most money for Muscular Dystrophy.

In all, eight chapters collected over \$15,000 through various projects designed to stimulate contributions. Since the program began in 1972, more than \$50,000 has been raised by Chi Phi chapters.

The brothers of Alpha Theta Chi have led all chapters since they adopted M-D as a service project three years ago. Their success has been laid to a well planned and promoted 30-hour dance marathon.

The Theta Delta chapter, which placed second again this year, has the distinction of being our only chapter to sponsor an M-D fund-raising program in each of the five years since Chi Phi adopted M-D as a national charity. The chapter has raised more than \$1000.00 in four out of the five years. In the past they have used local radio coverage to promote a Pole-a-Thon which saw Brother Jay Mayer set a record in 1974. He sat 26 hours atop a 45-foot telephone pole erected on the chapter house lawn.

Other chapters which are regular participants include Zeta (Franklin & Marshall), Delta Xi (West Virginia Wes-



MUSCULAR DYSTROPHY ASSOCIATION, INC.
Active Member, National Health Council

Please Reply To: 1912 NORTH 90TH STREET, LOWER LEVEL, OMAHA, NEBRASKA 68114, (402) 393-7866

November 30, 1977

Mr. Harley Schoenfeldt
Assistant to National Director
Chi Phi Fraternity
Peachtree Road, N.E.
Atlanta, Georgia 30326

Dear Mr. Schoenfeldt:

The Chi Phi Fraternity at the University of Nebraska Lincoln held a Dance Marathon Against Muscular Dystrophy. The event was held on March 5 and 6, 1977. The Dance Marathon raised a total of \$12,262.30.

We would like to take this opportunity to once again thank the Chi Phi's for the excellent job they have done for us. We really appreciate your interest in the Association. And, I am happy to report that the Chi Phi's at Lincoln already have plans well underway for their 1978 Dance Marathon.

Thanks again.

Sincerely,
Jan Frey
Jan Frey
District Director

JF/lm

NATIONAL OFFICE: 810 SEVENTH AVENUE, NEW YORK, N. Y. 10019 212 586-0808
MDA sponsors research into many neuromuscular disorders, including muscular dystrophy, myositis, amyotrophic lateral sclerosis (ALS), spinal muscular atrophy, Friedreich's ataxia and myasthenia gravis, and provides services to those afflicted by these conditions.

leyan), Alpha Zeta (West Georgia), Rho Iota Kappa (University of Rhode Island), Psi Delta (UNC-Charlotte) and Epsilon Delta (Oregon State).

Seven additional chapters have competed in past years including Tau (University of Alabama) and Phi Delta (University of Tennessee) on more than one occasion.

Brother Joe Dockery Xi '28 and the Chi Phi Educational Trust have challenged undergraduates to make this year our biggest in terms of number of chapters which sponsor an M-D fund raising event.

Dave Taylor Has New Post at Charlotte

Dave Taylor has recently been promoted from sports information director to assistant athletic director at the University of North Carolina at Charlotte. His responsibilities now include the athletic foundation offices and ticket operation in addition to supervision of sports information.

Dave entered UNCC in 1965, the year it became part of the state university system. There was no gymnasium or scholarship basketball players but there was a team which practiced in a nearby facility. Dave hung around the athletic department as a student assistant "gopher" throughout his college years.

Since that time, the new university has developed a broad athletic program and has produced basketball teams which last year advanced to the NCAA semi-finals.

A few years after graduation, Dave returned to UNCC as sports information director. His writing ability and his enjoyment of people serve him well in the position. His 1976-77 women's athletics brochure was selected third in the nation by a panel of his peers.

GENERAL SCHEDULE OF ACTIVITIES 1978 CONGRESS—CHI PHI FRATERNITY

WEDNESDAY, AUGUST 9
Krannert Leadership Session
Chi Phi Building Fund Meeting
Morris Avenue Social

THURSDAY, AUGUST 10
Krannert Leadership Session
Grand Council Meeting
Model Initiation Ceremony

FRIDAY, AUGUST 11
Congress Session I
Outdoor Athletics
Barbecue Dinner

SATURDAY, AUGUST 12
Congress Session II
Congress Session III
Reception and Banquet

SUNDAY, AUGUST 13
Congress Session IV
Grand Council Meeting

Birmingham is Site for '78 Congress

(Continued from page 1)
taste of Southern hospitality.

One of the greatest benefits to a national Chi Phi Congress is the interaction which develops among delegates of various chapters, alumni and Grand Officers. To enjoy and learn from such an encounter produces an experience which lives on in the memory of attendees. It is always interesting to see the number of Congress repeaters. The eleven chapters in the nearby area can be expected to send a bumper crop of active members.

There is much more to a Chi Phi Congress than the Krannert Leadership Workshop and the Congress legislative sessions. Normally the Grand Council and Education Trust will hold meetings which are open to visiting alumni.

This year will be the first chance for a meaningful gathering for the new Chi Phi Building Fund. All these events provide a significant opportunity to quickly update yourself on current fraternity programs and the direction of national operations.

Make your plans now. Why not arrange to meet in Birmingham with a fraternity brother you haven't seen in years? There could be no better way to

renew a friendship. Send your reservations to the Birmingham Hyatt House and notify the Chi Phi office in Atlanta so you can be kept informed of additional information as it becomes available.

Mail to Reservations Manager, Birmingham Hyatt House, 901 21st Street North, Birmingham AL 35203

Name _____	Room for 4 \$36.00
Street Address _____	Room for 3 33.00
City, State _____	Double/Twin Bedrooms 30.00
and ZIP _____	Single rooms 27.00
Firm _____	2-room suites 80.00
Will Arrive On _____ At _____ M.	3-room suites 110.00
DATE TIME	All rates are subject to 6% Alabama Sales Tax.
Will Depart On _____ At _____ M.	
DATE TIME	

- 6:00 P.M. Arrival
- Guaranteed Payment

NOTE: Reservations will be held until 6:00 PM unless accompanied by deposit or company guarantee. Reservations MUST be received 14 days prior to opening date of convention. If room is not available at rate requested, reservation will be made at nearest available rate.

SECOND CLASS POSTAGE PAID AT KISSIMMEE, FLORIDA 32741

THE CHI PHI CHAKETT

VOL. 62, NUMBER 4
DECEMBER 1977

POSTMASTER: Please send form 3579 for undeliverable copies to Chi Phi Fraternity, 3400 Peachtree Road, N.E. Suite 1041, Atlanta, Georgia 30326